

AT HOME OUTPARCEL

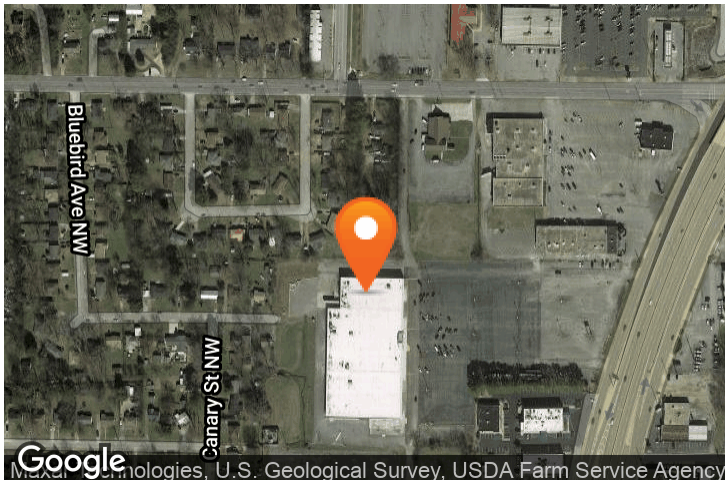
1401 Memorial PKWY NW, Huntsville, AL 35816

EXECUTIVE SUMMARY



LOCATION OVERVIEW

Build to suit opportunity, up to 8,000 SF in new redevelopment of prime North Huntsville property.



PROPERTY HIGHLIGHTS

- Positioned on the going to work side of the road.
- High traffic counts - 64,780 AADT.
- Located near Costco, Home Depot, 5 Guys, Dunkin Donuts, Zaxby's, Staples, and Starbucks.
- Located in front of new At Home store.
- Easy access of Memorial Parkway, Oakwood Avenue, and Charlotte Drive.

DEMOGRAPHICS

	1 MILE	2 MILES	3 MILES
Population	8,333	71,086	121,069
Households	3,354	30,847	51,766
Median HH Income (\$)	25,718	33,675	38,347

EXCLUSIVE AGENT(S)

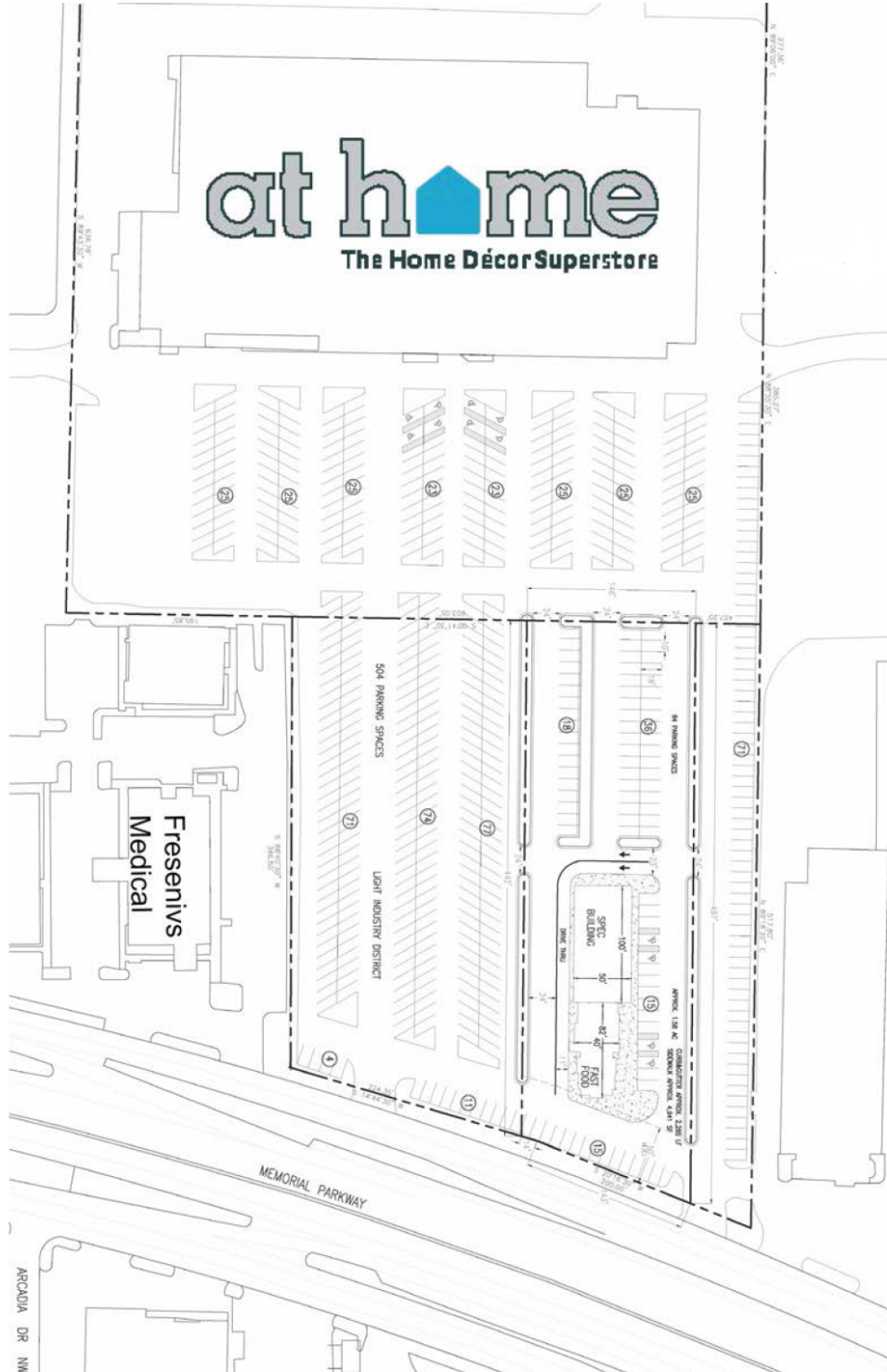
DON BECK • don.beck@tscg.com • 256.534.7555



AT HOME OUTPARCEL

1401 Memorial PKWY NW, Huntsville, AL 35816

SITE PLAN



EXCLUSIVE AGENT(S)

DON BECK • don.beck@tscg.com • 256.534.7555

