



SAURAGE ROTENBERG
COMMERCIAL REAL ESTATE

JIM ALLEN

OFFICE 225 766-0000

MOBILE 225 287-2999

EMAIL JIM@SR-CRE.COM



FOR SALE: MAJOR REDUCTION

**221 WEST ESPLANADE AVENUE
KENNER, LA 70065**

~~\$1,963,000~~ **\$1,295,000**

3.50 ACRES

HIGHLIGHTS

- Three 1.07 Acre Lots Available for Sale + 7,500 SF Parcel Can be Sold Separately or In Total
- Located Directly Across from Ochsner Medical Center
- Zoned G-0
- Approved for Assisted Living
- Perfect for Assisted Living Facility; Medical Office; Clinic

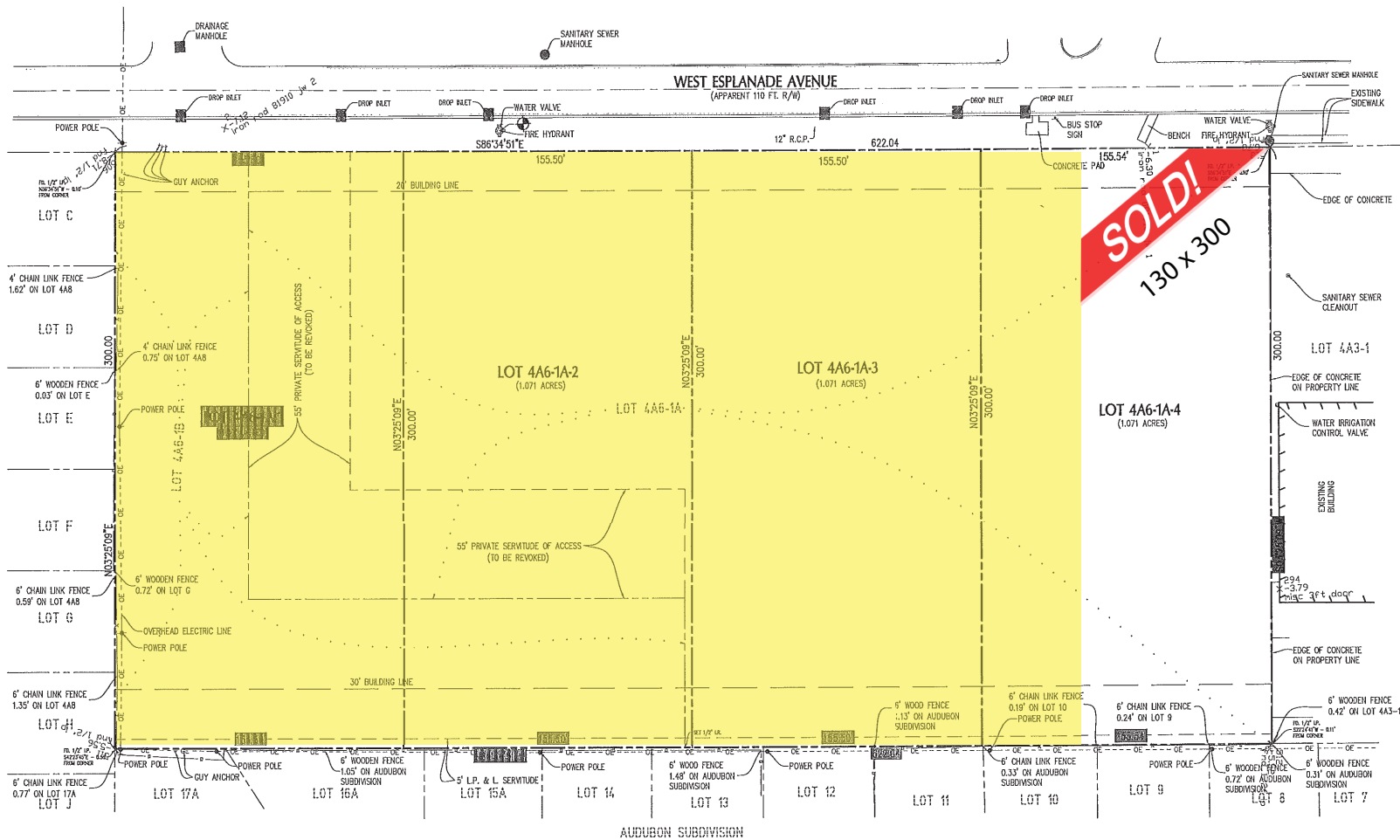


SAURAGE ROTENBERG COMMERCIAL REAL ESTATE, LLC
5135 BLUEBONNET BLVD
BATON ROUGE, LA 70809

TEL 225 766-0000
FAX 225 766-2229

WEB SAURAGEROTENBERG.COM

The information contained herein has either been given to us by property owners or is from sources deemed reliable and is believed to be correct, it is not in any way warranted or guaranteed by Saurage Rotenberg Commercial Real Estate. This information is submitted subject to errors, omissions, changes in price, rental or other conditions, withdrawal without notice, and to any special listing conditions imposed by the principals. Licensed in Louisiana.



Approximately 3.5 Acres Remaining

