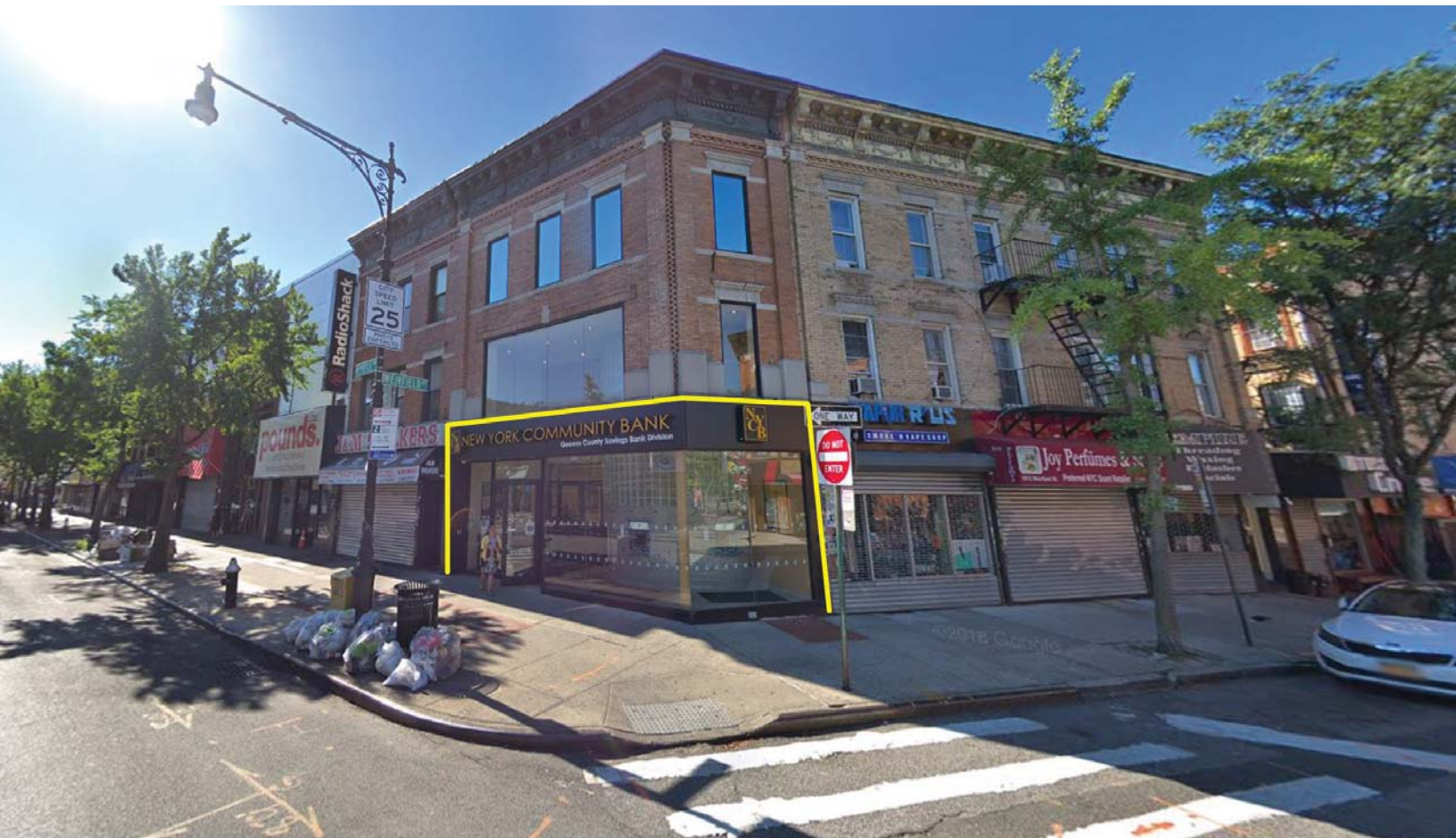


ridgewood, ny

57-32 myrtle avenue

corner building | for lease



DEMOGRAPHICS	.5 MILES	1 MILE	1.5 MILES
Population	46,453	149,625	256,810
Median HHI	\$50,432	\$48,287	\$47,908
Daytime Population	34,332	111,394	196,906

Available	1,650 square feet - ground floor full basement
Rent	Upon Request
Area Retail	TD Bank, Payless Shoes, Duane Reade, Gamestop, Burger King, Taco Bell, Bath and Body Works, Carter's, Dunkin' Donuts, Starbucks, Planet Fitness, and many more
Comments	• 34' of frontage

For More Information:

Mark Gallucci | gallucci@sabre.life | T 718 484 2002 x1508

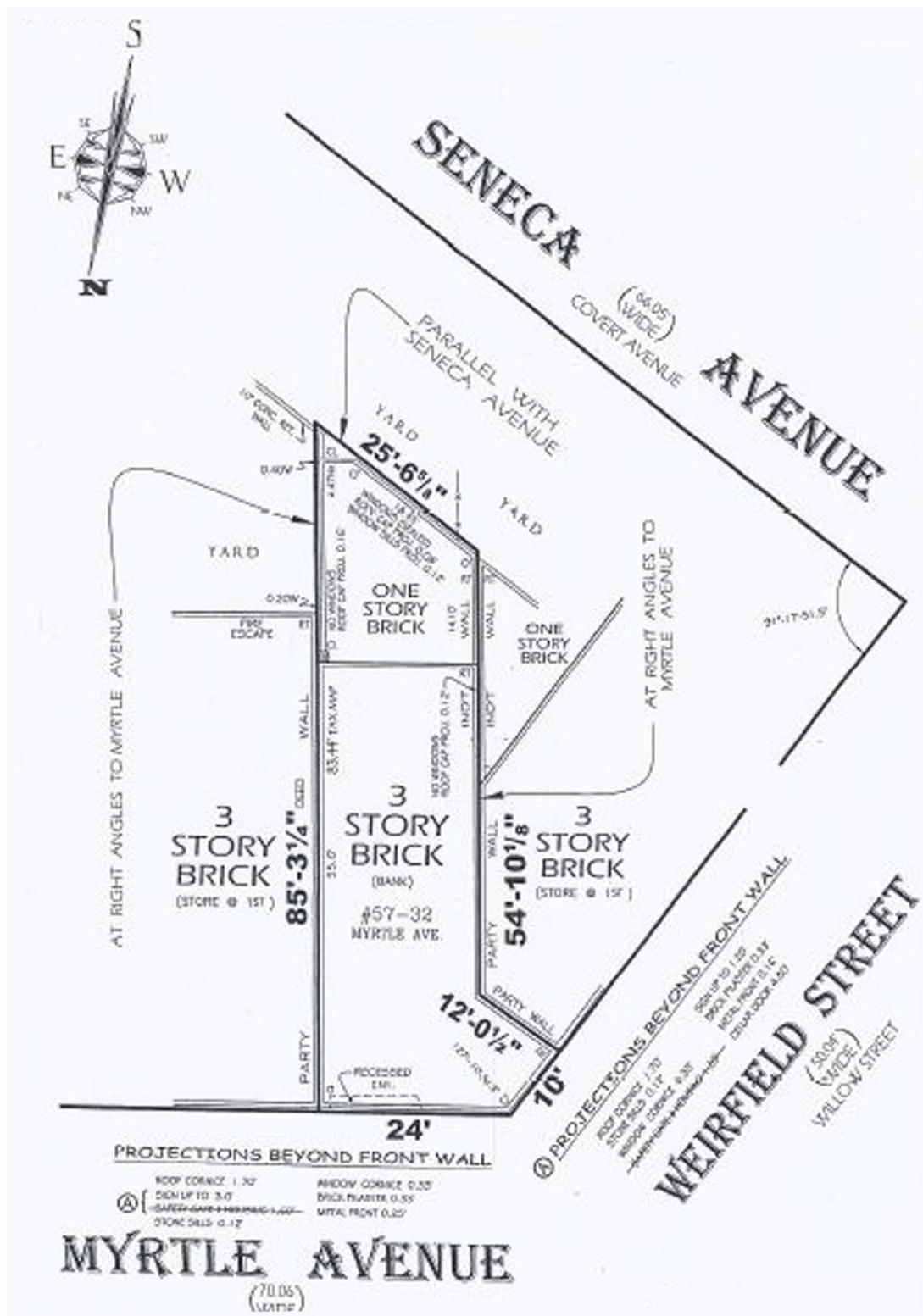
George Skaliarinis | skaliarinis@sabre.life | T 718 484 2002 x1507

sabre.life

SABRE

ridgewood, ny

57-32 myrtle avenue



For More Information:

Mark Gallucci | gallucci@sabre.life | T 718 484 2002 x1508

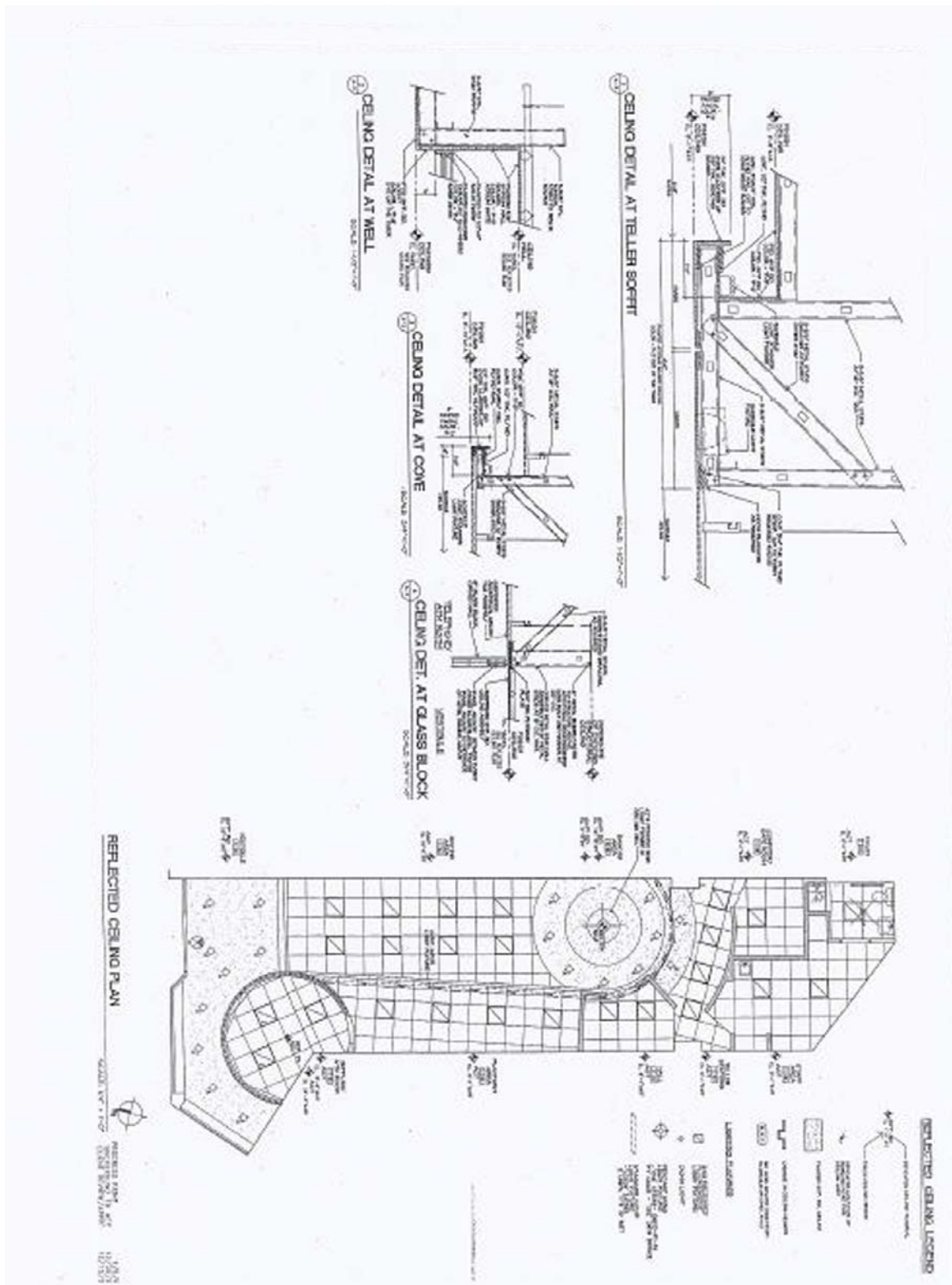
George Skaliarinis | skaliarinis@sabre.life | T 718 484 2002 x1507

sabre.life

SABRE

ridgewood, ny

57-32 myrtle avenue



For More Information:

Mark Gallucci | gallucci@sabre.life | T 718 484 2002 x1508

George Skaliarinis | skaliarinis@sabre.life | T 718 484 2002 x1507

sabre.life

© Sabre Real Estate Group, LLC. This information has been obtained from sources believed reliable. We have not verified it and make no guarantee, warranty or representation about it. Any projections, opinions, assumptions or estimates used are for example only and do not represent the current or future performance of the property. You and your advisors should conduct a careful, independent investigation of the property to determine to your satisfaction the suitability of the property for your needs.

SABRE

