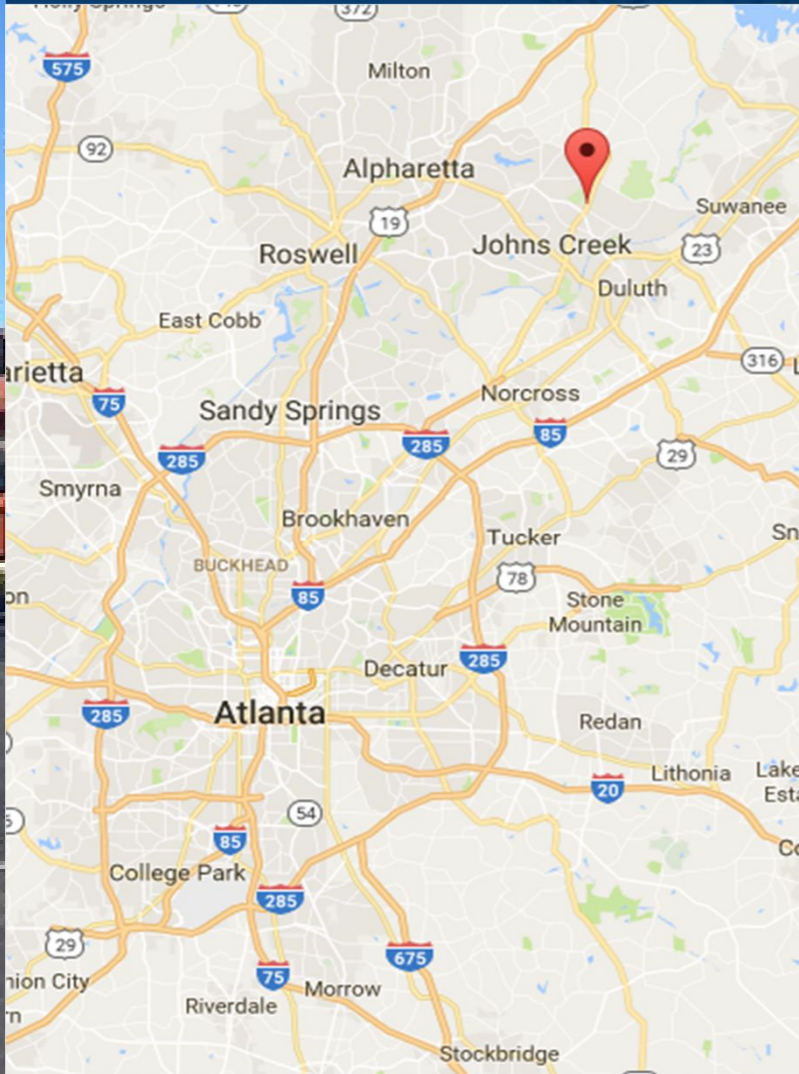


Johns Creek Walk

11030 Medlock Bridge Road
Johns Creek, Georgia 30097



Leasing Contacts

Marrissa Chanin: (678) 501-5341

Jon Flaig: (678) 501-5342

Email: info@riverwoodproperties.com

Johns Creek Walk is located on Medlock Bridge Road (GA 141) with daily traffic counts over 41,000 vehicles. Johns Creek Walk consists of multi-family units, a senior living community, private residences, senior living apartments, and professional offices/retail.

The retail shopping center is conveniently located near Johns Creek Parkway which is the home of several Fortune 500 companies within the Technology Park business district. Some employers include Alcon, State Farm, World Financial Group, Lifetime Fitness, and SAIA.

Intersection: Medlock Bridge Road & Johns Creek Parkway

Daily Traffic Counts: 41,749 cars per day

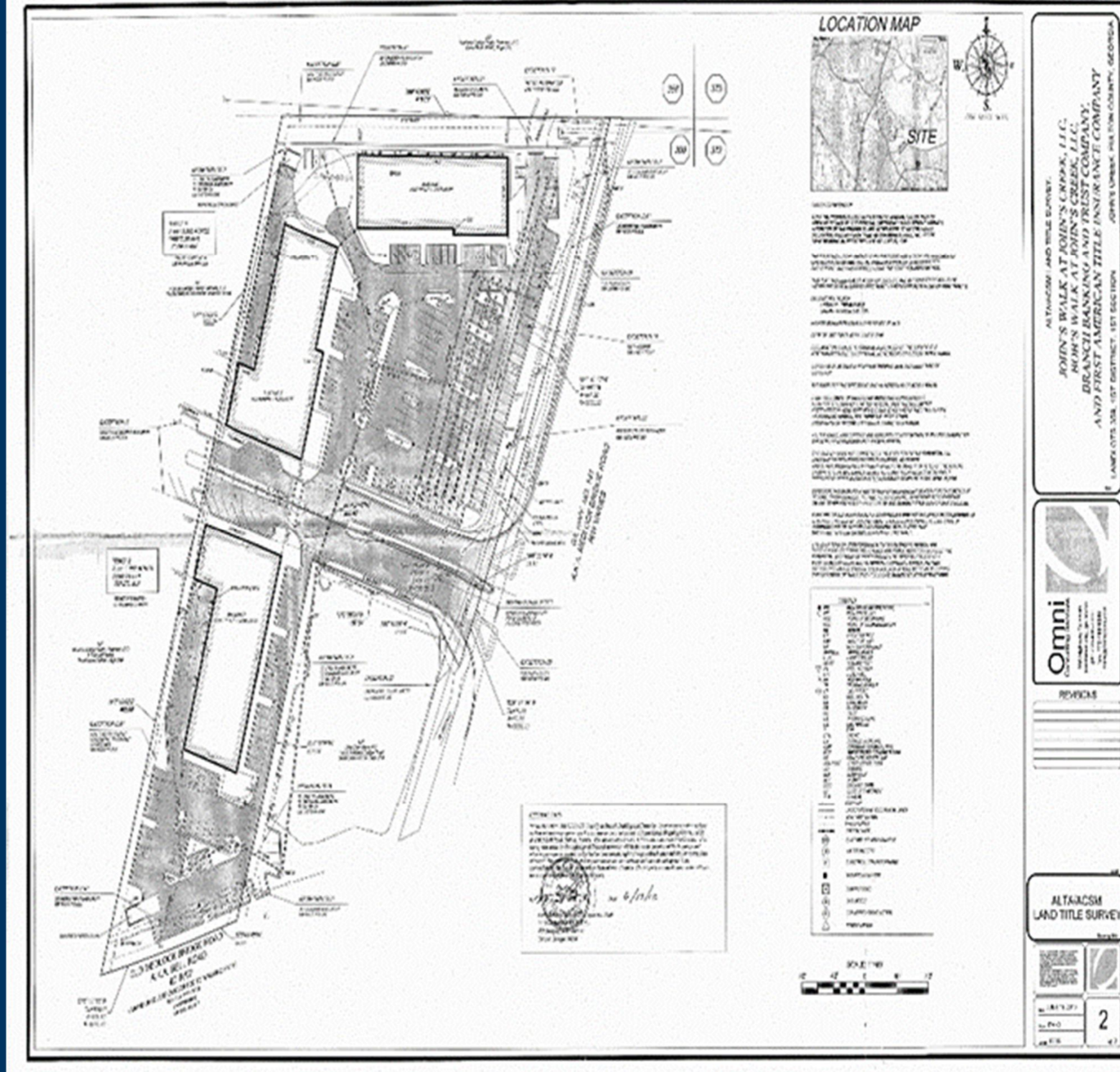
Site Access: Property is accessible via curb cuts on Medlock Bridge Road.

Johns Creek Walk

30	The Parlor Beauty	1,400
40	HCG Weight Loss Atlanta	1,400
50	Grecian Gyro	1,400
60	Enopi of Johns Creek	1,750
70	Coldwell Banker	5,007
10-20	Francis Fong Martial Arts	4,200
110	Another Broken Egg	5,500
120	Retail Space Available	3,212
130	Beauty Skin Laser	1,000
140	The Legacy Cabinet Company	1,400
150	Sushi Mio	1,400
160	Maverick's Mexican Cantina	2,800
210	Palomilla's Grill	3,575
230	100 Percent Chiropractic	1,755
240	Atlanta Kitchen	1,300
250	Prima Olive	1,300
260	Studio 108	1,820
270	Polished Perfection	1,400
280	Dry Cleaners	1,500

GLA: 24,400 SF

Availability:
3,212 SF



JOHNS CREEK WALK Site Plan



AREA DEMOGRAPHICS



2018
Population

1 MILE	11,040
3 MILE	79,524
5 MILE	189,066



Estimated Population
Growth

1 MILE	7.37%
3 MILE	8.58%
5 MILE	9.35%



Household 2018

1 MILE	3,755
3 MILE	27,075
5 MILE	65,052

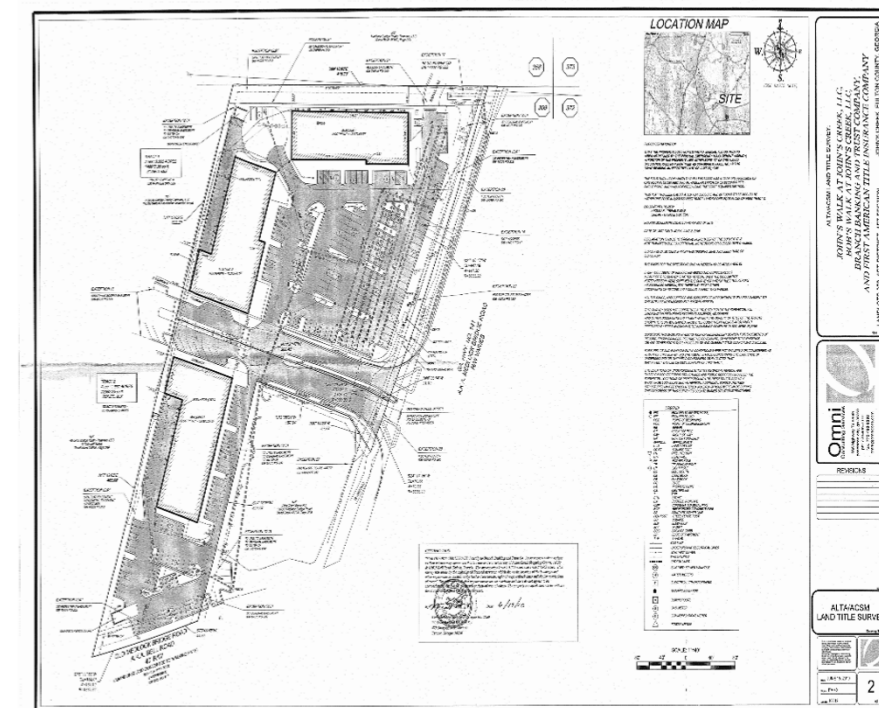


Household
Income

1 MILE	\$129,331
3 MILE	\$137,178
5 MILE	\$138,062



JOHNS CREEK WALK Trade Area Overview



JOHNS CREEK WALK

Property Photos and Site Plan