



Jeran Shops

47001 Mona Street, Tea, SD 57064

Property Features

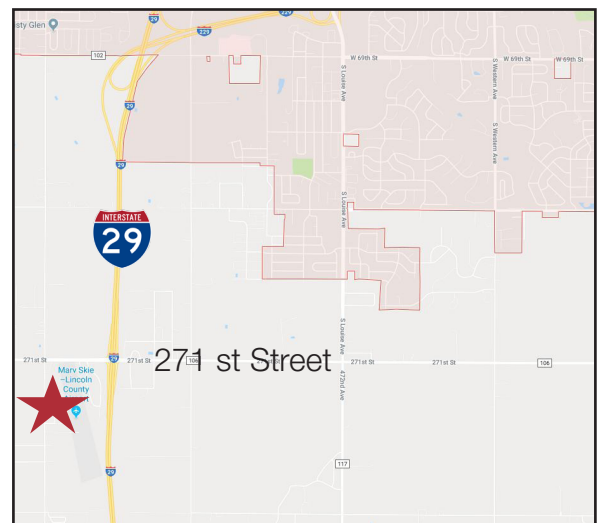
- **Available July 2019**
- Suite 3: 4,000 sq. ft.
- Potential to be subdivided, contact broker for details
- Year Built: 2018
- Paved, on-site parking
- Fully insulated, pole construction
- Two (2) 12' x 14' overhead doors
- Floor drain
- Reznor heater
- Office with heat and air conditioning
- Flexible design to fit tenant needs
- 200 amp power
- Property located on blacktop road - 470th/Sundowner
- Security systems in place

Pricing

- Lease Price: \$2,100/ month plus utilities

Location

- Located west of the Tea Airport
- Just south of Highway 106/ 271st
- Area neighbors include: J&L Premier Automotive, Vermeer Equipment, Specialty Cars, Nursery Wholesalers, Dobesh Construction, A/V Cabinetry



Marcus Mahlen, CCIM
605 444 7116 direct
605 228 9744 mobile
mmahlen@naisiouxfalls.com

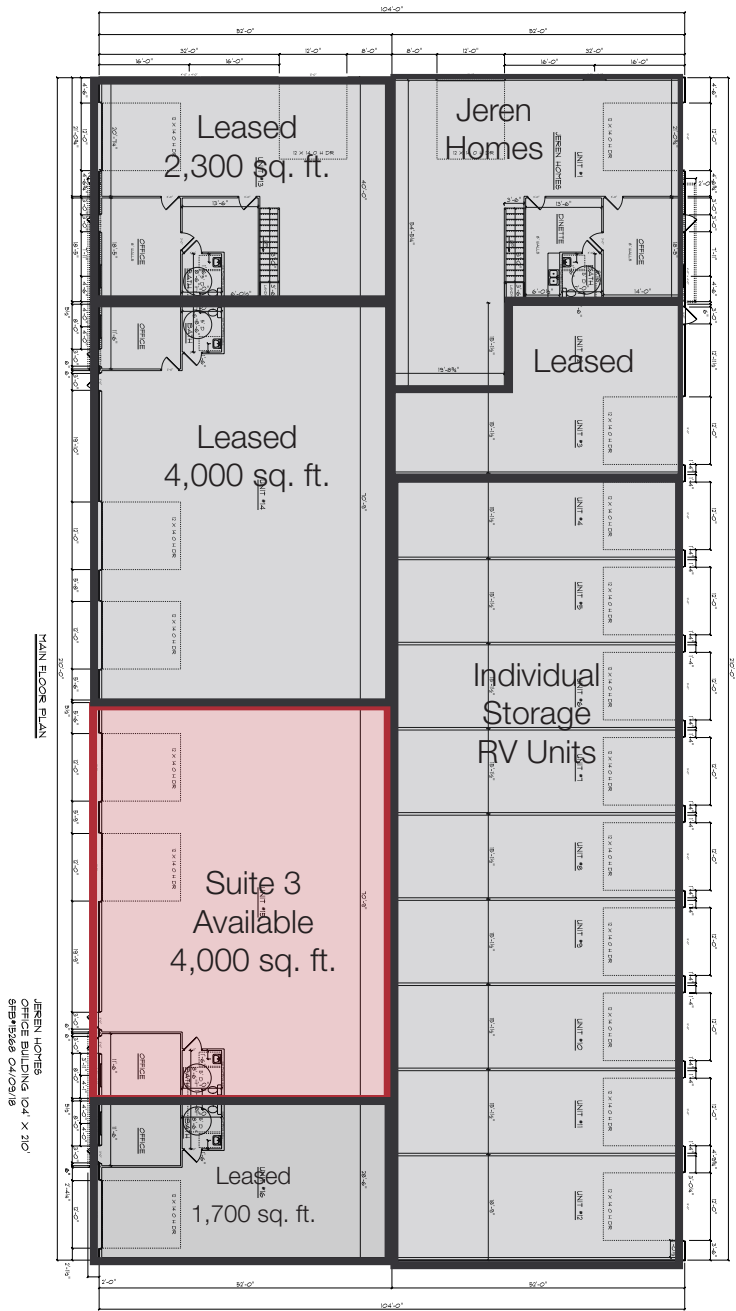
For Lease
Shop/ Warehouse



For Lease
Shop/ Warehouse



For Lease
Shop/ Warehouse



Suite 3 Available

