

GREENWAY MALL

RETAIL SPACE FOR LEASE



3500 W. 41ST Street,
Sioux Falls, SD 57106

FOR LEASE

\$14.00 / SF NNN
2,800 - 4,576 SF

SIZE

- Suite 3500: 2,800 SF
- Suite 3508: 4,576 SF
- Suite 3510: 4,380 SF

PRICE

- \$14.00 / SF NNN
- Estimated NNN: \$3.70 / SF

LOCATION

- Fantastic 41st Street frontage with estimated traffic counts at 36,800 vehicles per day; one of the busiest corridors in South Dakota!

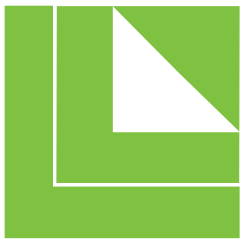
DESCRIPTION

- Suite 3500 is an endcap space with an open retail floor
- Suite 3508 is an interior bay next to The Cell Phone Guy with a sales floor and storage areas
- Suite 3510 is a former clothing store with an open retail floor concept
- Great potential with building and pylon sign opportunities!
- Co-tenants include Firehouse Subs, The Cell Phone Guy, DXL, Chasing Clouds Vape, and Connect Electric
- Contact Broker for additional information

Find out more at lloydcompanies.com

SCOTT BLOUNT
605 231-1882
scott@lloydcompanies.com

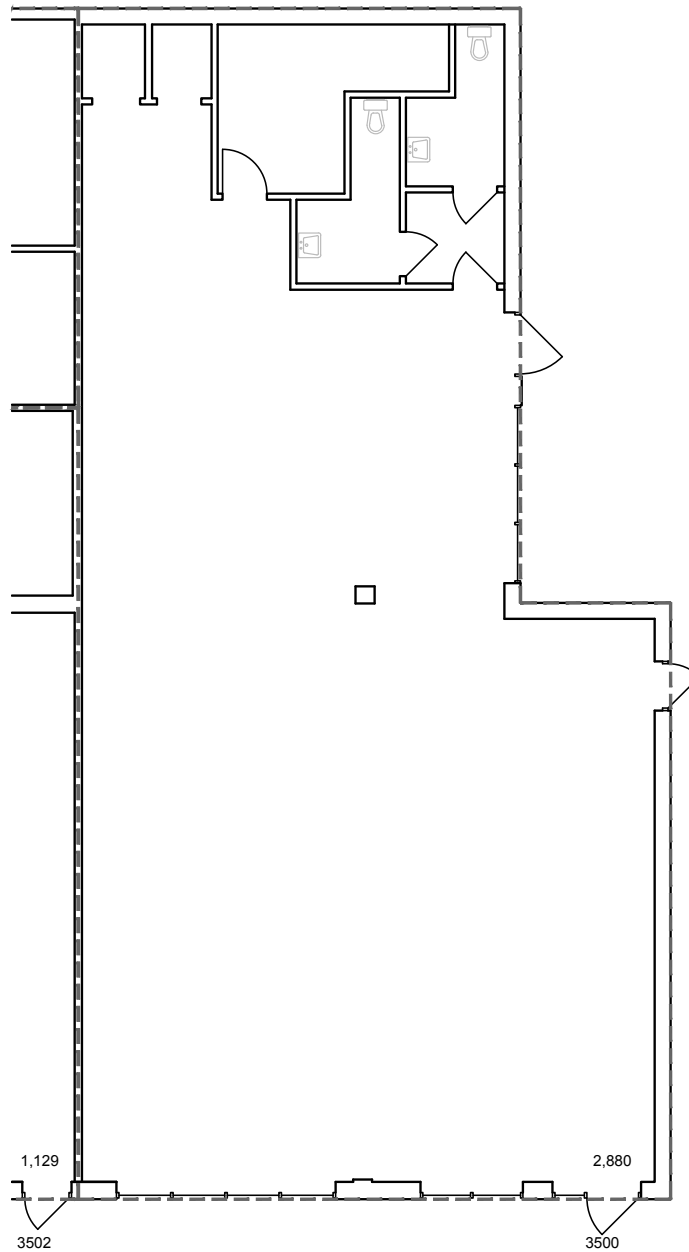




LLOYD
COMPANIES

GREENWAY MALL

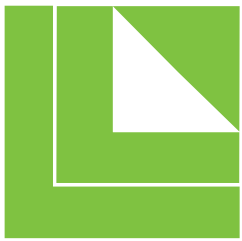
RETAIL SPACE FOR LEASE



SCOTT BLOUNT
605 **231-1882**
scott@lloydcompanies.com

SUITE 3500

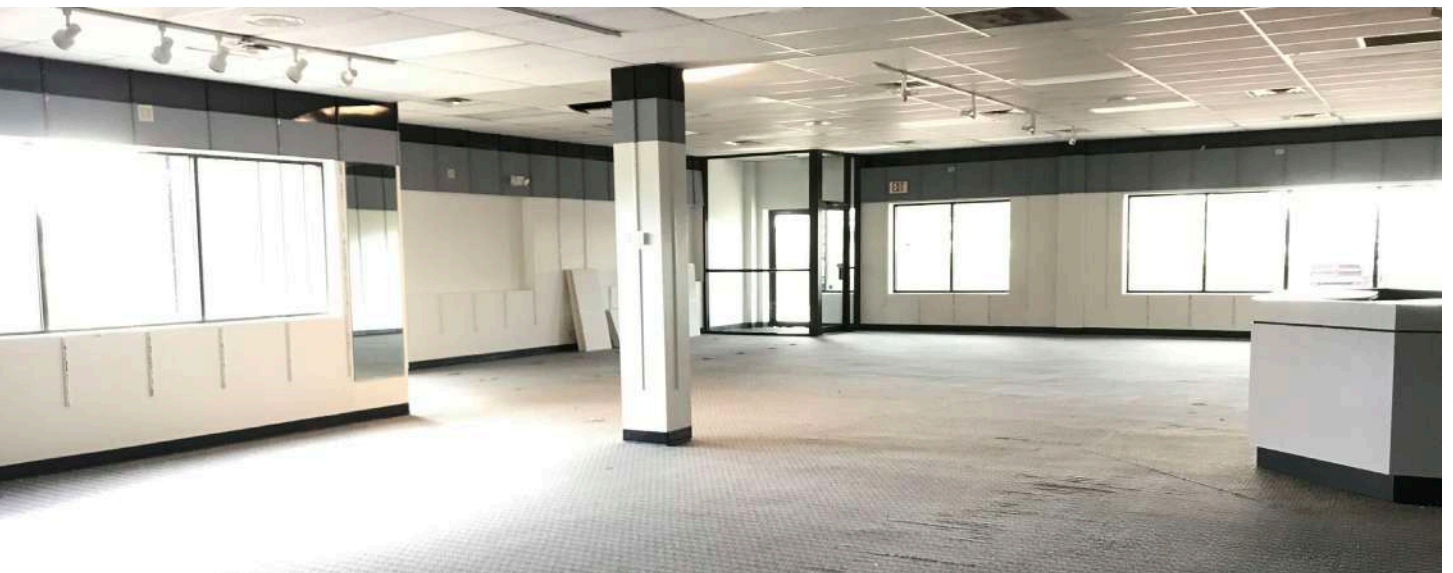
Concept only;
Subject to change



LLOYD
COMPANIES

GREENWAY MALL

RETAIL SPACE FOR LEASE

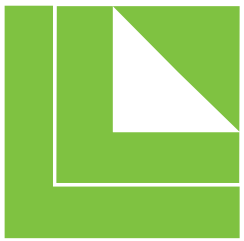


SCOTT BLOUNT
605 **231-1882**
scott@lloydcompanies.com

SUITE 3500 PICTURES

101 S. Reid Street | Ste. 201 | Sioux Falls, SD 57103 | 605.231.1738

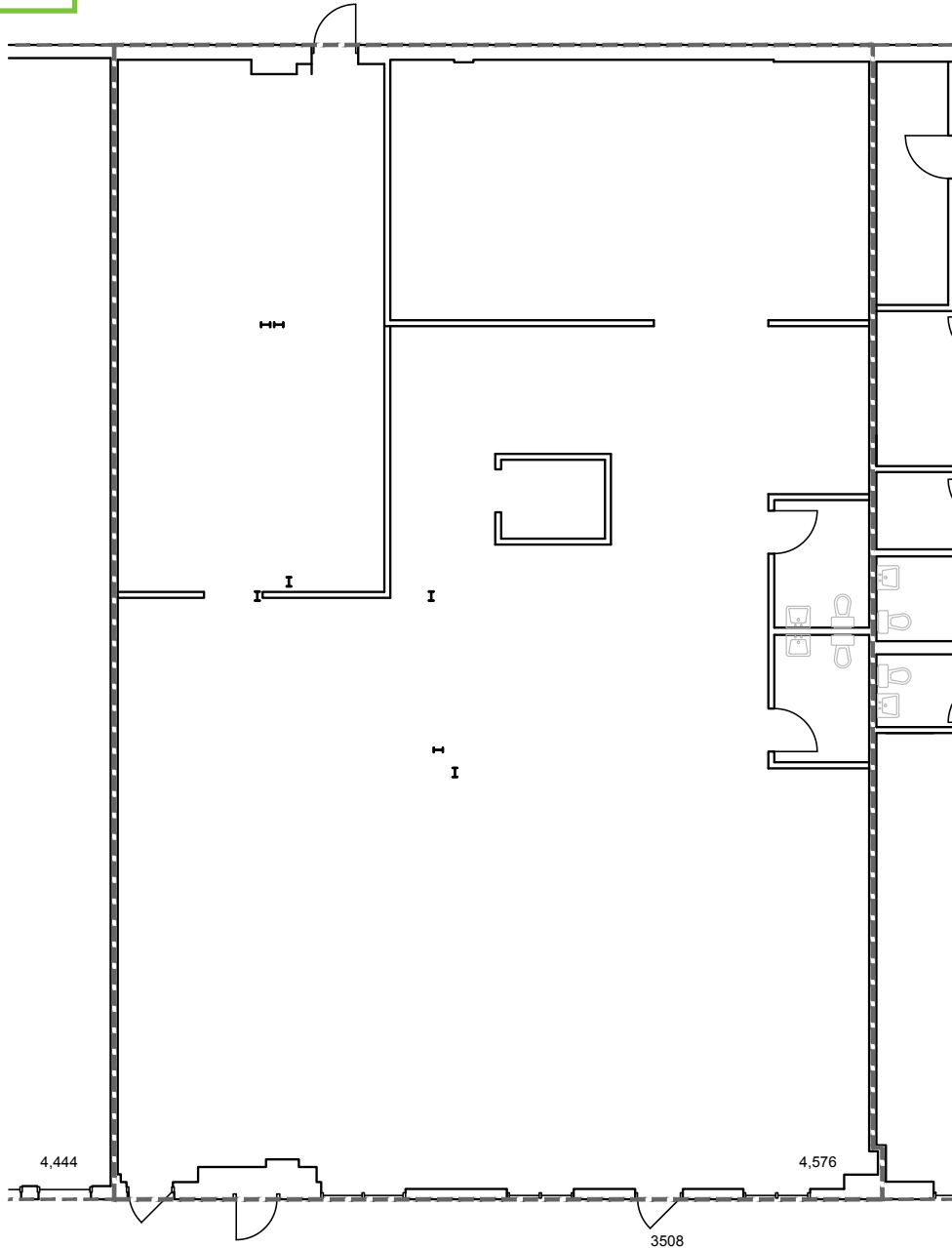
Information deemed reliable, but not guaranteed.



LLOYD
COMPANIES

GREENWAY MALL

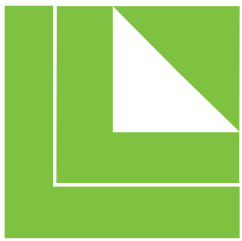
RETAIL SPACE FOR LEASE



SCOTT BLOUNT
605.231-1882
scott@lloydcompanies.com

SUITE 3508

Concept only;
Subject to change



LLOYD
COMPANIES

GREENWAY MALL

RETAIL SPACE FOR LEASE

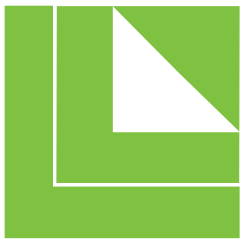


SCOTT BLOUNT
605 **231-1882**
scott@lloydcompanies.com

SUITE 3508 PICTURES

101 S. Reid Street | Ste. 201 | Sioux Falls, SD 57103 | 605.231.1738

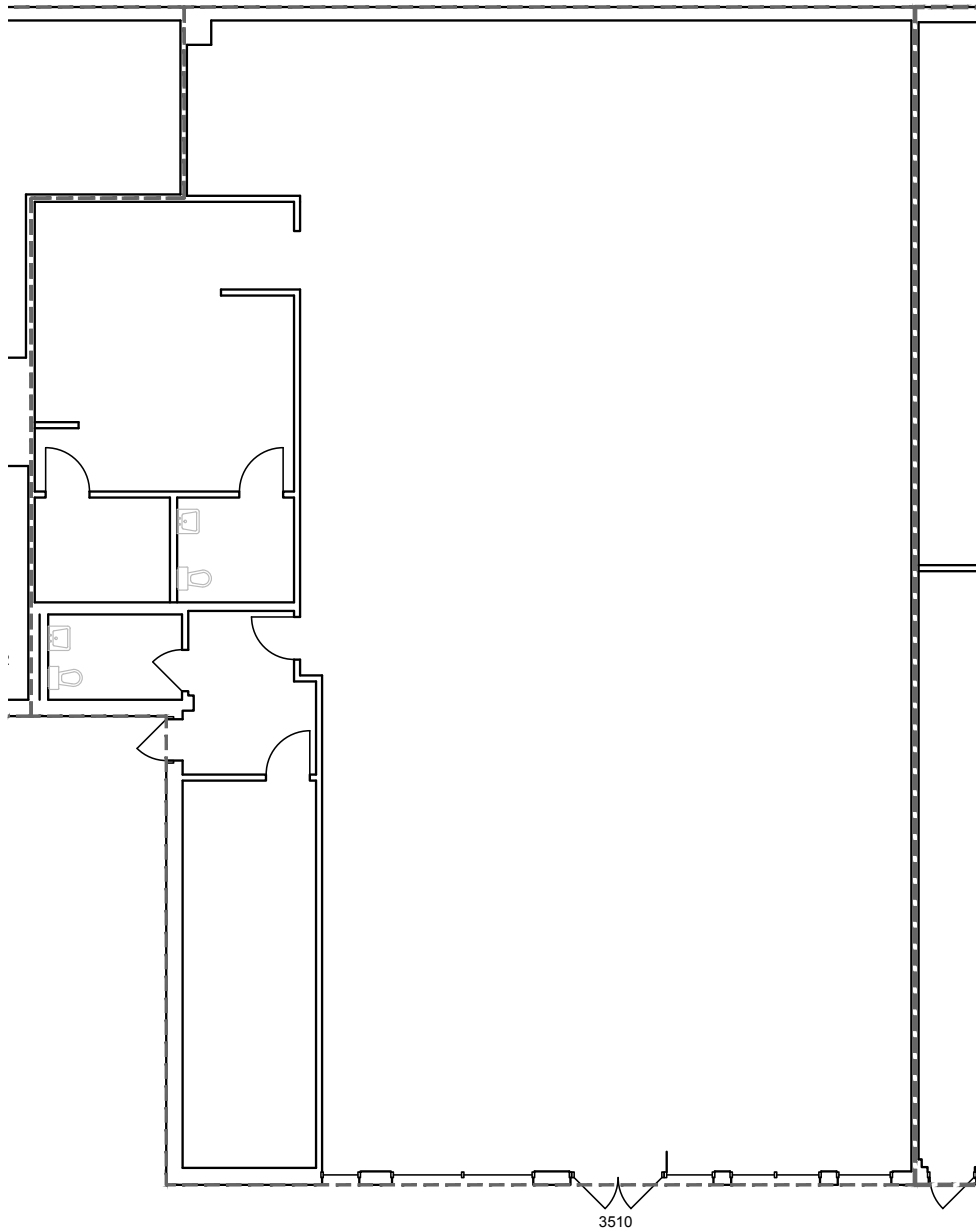
Information deemed reliable, but not guaranteed.



LLOYD
COMPANIES

GREENWAY MALL

RETAIL SPACE FOR LEASE



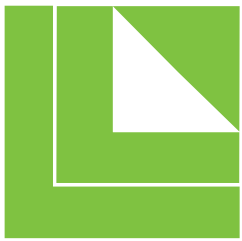
SCOTT BLOUNT
605 **231-1882**
scott@lloydcompanies.com

SUITE 3510

Concept only;
Subject to change

101 S. Reid Street | Ste. 201 | Sioux Falls, SD 57103 | 605.231.1738

Information deemed reliable, but not guaranteed.



LLOYD
COMPANIES

GREENWAY MALL

RETAIL SPACE FOR LEASE

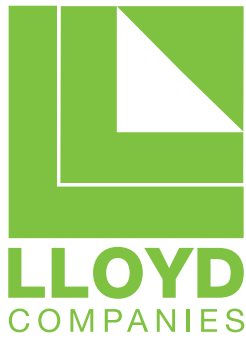


EXTERIOR PICTURES & MONUMENT SIGNAGE

SCOTT BLOUNT
605 **231-1882**
scott@lloydcompanies.com

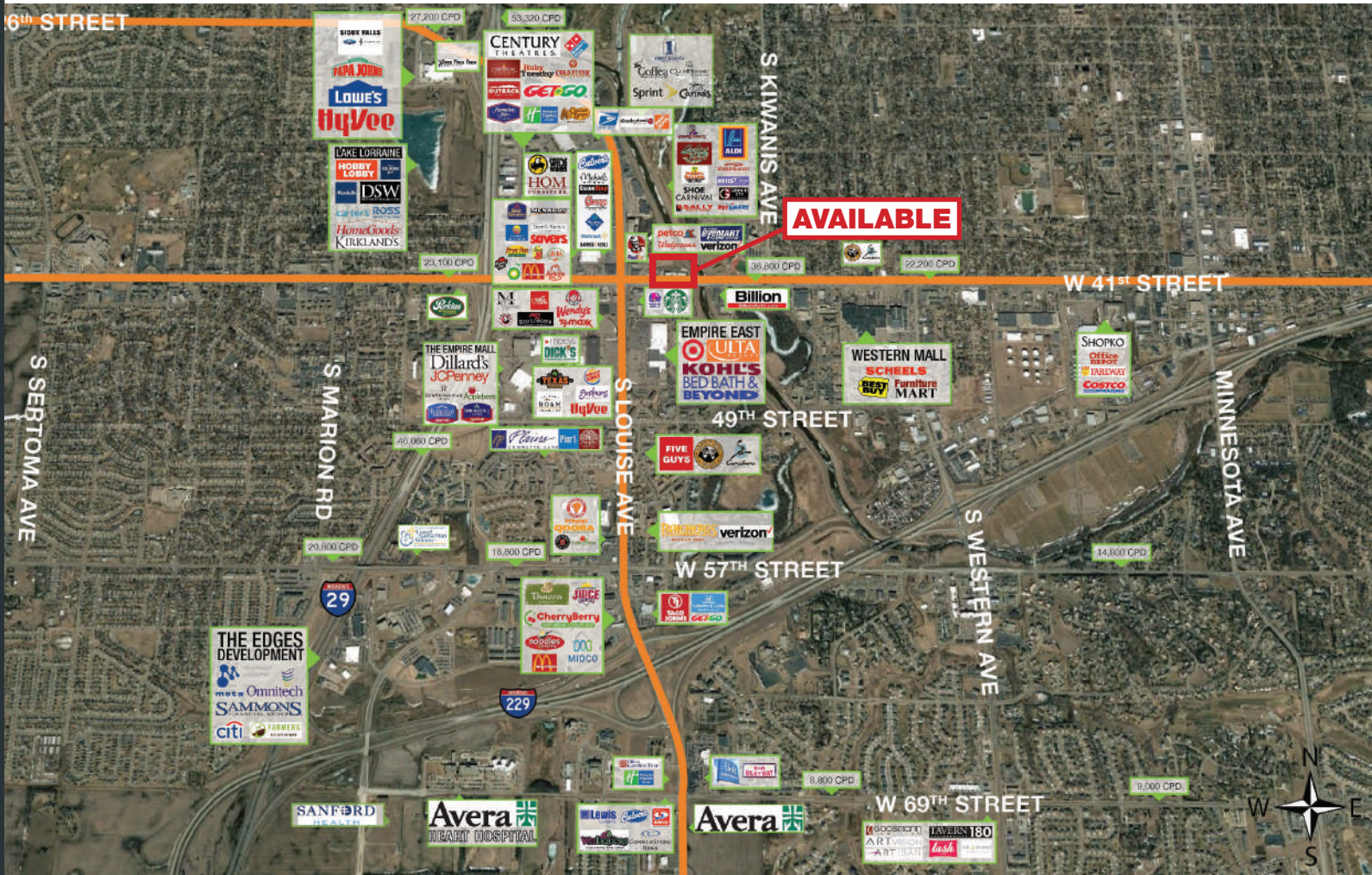
101 S. Reid Street | Ste. 201 | Sioux Falls, SD 57103 | 605.231.1738

Information deemed reliable, but not guaranteed.



GREENWAY MALL

RETAIL SPACE FOR LEASE



AREA MAP

SCOTT BLOUNT
605.231-1882
scott@lloydcompanies.com

101 S. Reid Street | Ste. 201 | Sioux Falls, SD 57103 | 605.231.1738

Information deemed reliable, but not guaranteed.

