

# FOR LEASE - Retail Space

8793-8795 Tamiami Trail E. | St. Andrews Square

Naples, FL 34113



## OFFERING SUMMARY

Available SF: 1,200 - 5,368 SF

Lease Rate: \$10.00 - 18.00 SF/yr  
NNN

Estimated CAM: \$5.00/SF

Building Size: 42,731 SF

Lot Size: 5.32 AC

Year Built: 1990

Zoning: PUD

Market: Southwest Florida

Submarket: Lely

## PROPERTY OVERVIEW

St. Andrews Square is a highly visible shopping center located at the epicenter of the Naples housing construction boom. Tenants benefit from heavy traffic counts on Tamiami Trail annually. St. Andrews Square is located on the Northeast corner of Tamiami Trail East & St. Andrews Boulevard adjacent to Lely Golf Resort & Lely Resort and directly across from two brand new single-family home communities: Isles of Collier Preserve & Treviso Bay.

## PROPERTY HIGHLIGHTS

- Built out restaurant with hood & grease trap
- Excellent visibility from US-41
- Pylon signage available
- End-cap opportunity available
- Ample parking
- Ingress/egress from Tamiami Trail & St. Andrews Boulevard
- Center has over 600' of frontage on Tamiami Trail

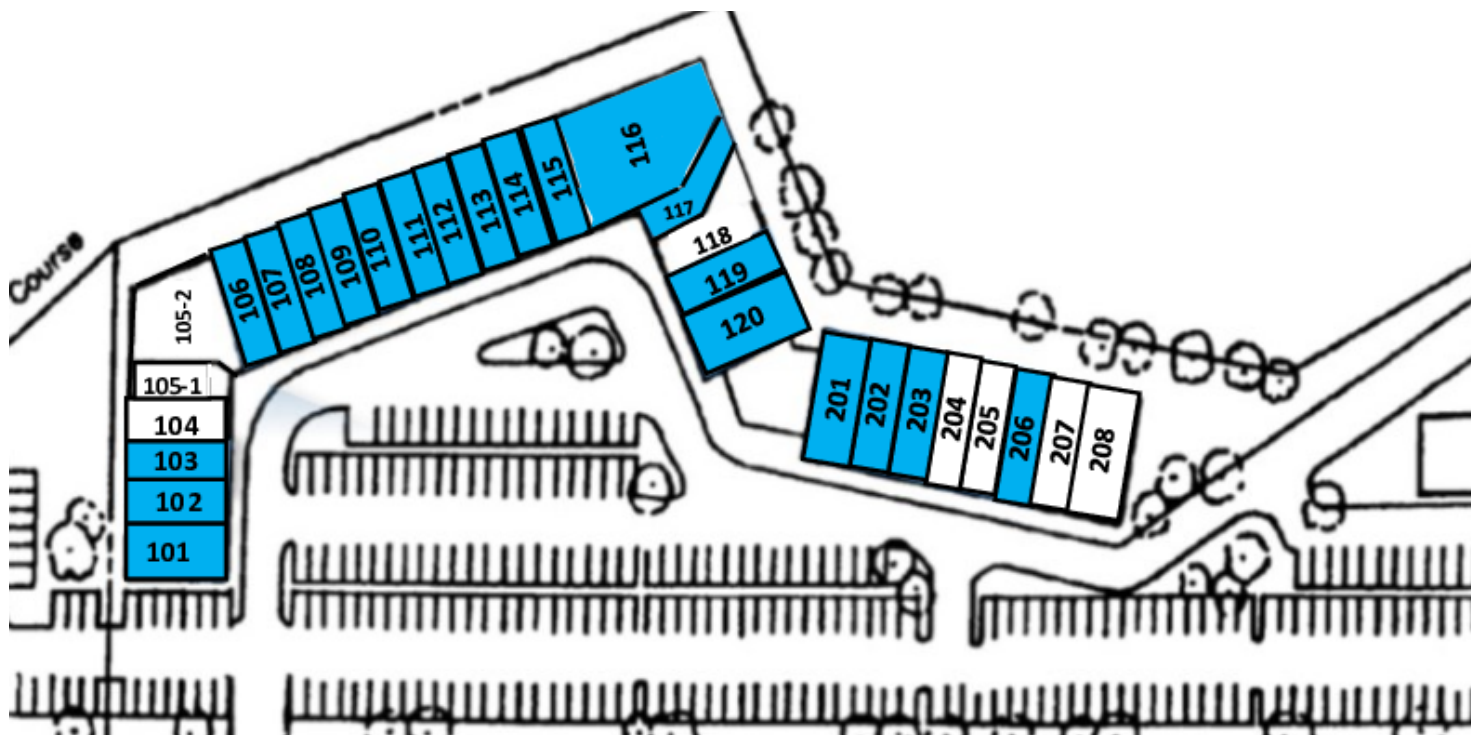
**Todd Sabin**  
Managing Director  
239.315.7015  
todd.sabin@svn.com

**Chad D. Commers, CCIM**  
Senior Advisor  
239.315.7017  
chad.commers@svn.com



The information presented here is deemed to be accurate, but it has not been independently verified. We make no guarantee, warranty or representation. It is your responsibility to independently confirm accuracy and completeness. All SVN® offices are independently owned and operated.

# FOR LEASE - Retail Space



Suite	SF	Max Contiguous	Rate
104	1,200 SF	6,568 SF	\$14.00/SF (NNN)
105-1	1,943 SF	6,568 SF	\$10.00/SF (NNN)
105-2	2,225 SF	6,568 SF	\$10.00/SF (NNN)
116	3,372 SF	3,372 SF	\$10.00/SF (NNN)
118	2,508 SF	2,508 SF	\$10.00/SF (NNN)
204-205	3,000 SF	3,000 SF	\$18.00/SF (NNN)
207-208	3,060 SF	3,060 SF	\$14.00/SF (NNN)

## IDEAL FOR:

- Restaurants / Fast Casual
- Fitness
- Medical Office
- Mattress / Furniture
- Hardware
- Insurance Agency
- Financial Planning
- Pet Supplies
- Dry Cleaner
- Clothing / Shoes
- Electronics

**Todd Sabin**  
Managing Director  
239.315.7015  
todd.sabin@svn.com

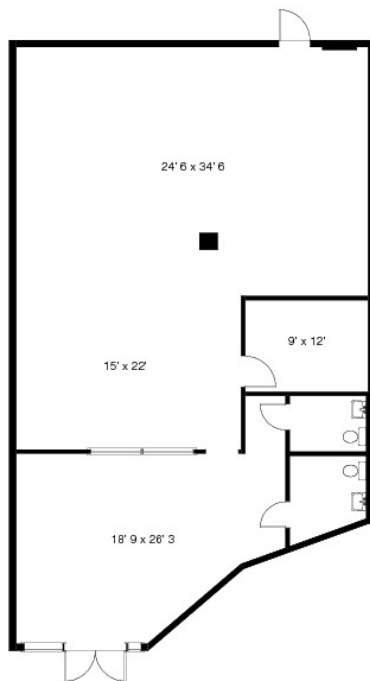
**Chad D. Commers, CCIM**  
Senior Advisor  
239.315.7017  
chad.commers@svn.com



The information presented here is deemed to be accurate, but it has not been independently verified. We make no guarantee, warranty or representation. It is your responsibility to independently confirm accuracy and completeness. All SVN® offices are independently owned and operated.

# FOR LEASE - Retail Space

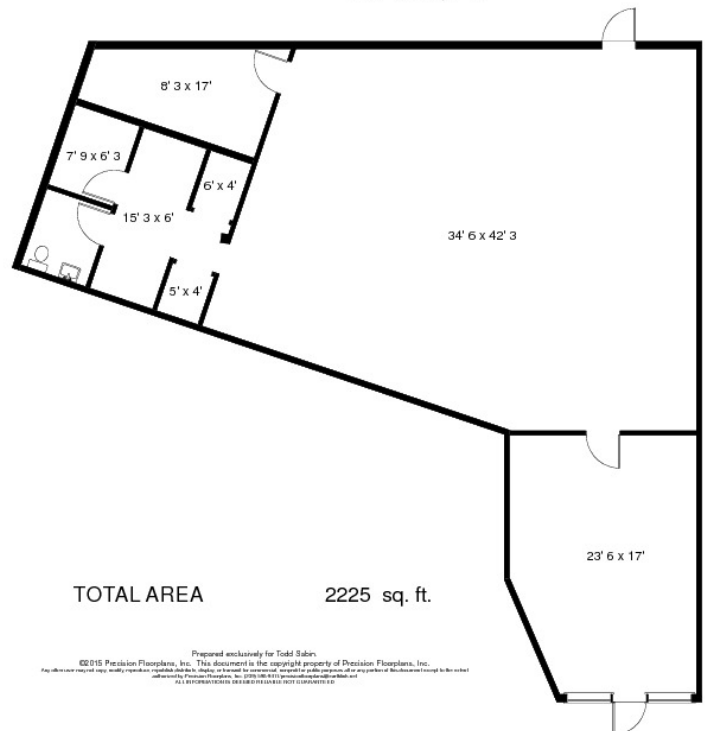
8793 EAST TAMIAMI TRAIL  
SUITE 105-1  
NAPLES, FL



TOTAL AREA 1943 sq. ft.

Prepared exclusively for Todd Sabin.  
©2015 Precision Floorplans, Inc. This document is the copyright property of Precision Floorplans, Inc.  
Any other use may constitute a violation of the applicable laws and regulations. This document is not to be reproduced or transmitted in any form or by any means, electronic or mechanical, including photocopying, recording, or by any information storage and retrieval system, without prior written permission from Precision Floorplans, Inc. All rights reserved.

8793 EAST TAMIAMI TRAIL  
SUITE 105-2  
NAPLES, FL



TOTAL AREA 2225 sq. ft.

Prepared exclusively for Todd Sabin.  
©2015 Precision Floorplans, Inc. This document is the copyright property of Precision Floorplans, Inc.  
Any other use may constitute a violation of the applicable laws and regulations. This document is not to be reproduced or transmitted in any form or by any means, electronic or mechanical, including photocopying, recording, or by any information storage and retrieval system, without prior written permission from Precision Floorplans, Inc. All rights reserved.

**Todd Sabin**  
Managing Director  
239.315.7015  
todd.sabin@svn.com

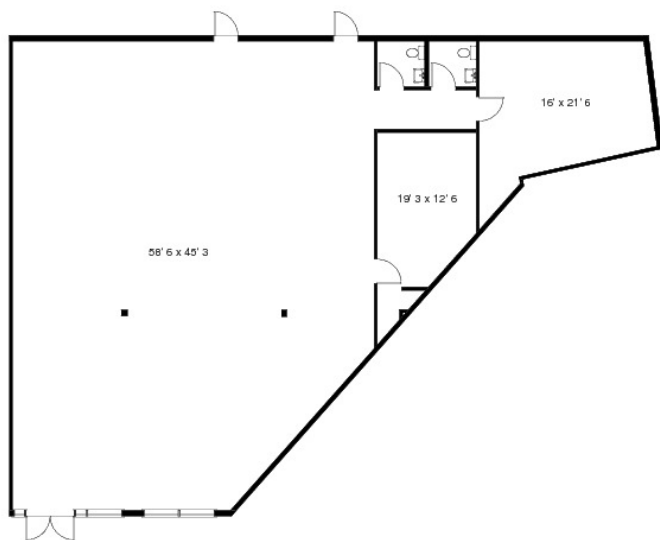
**Chad D. Commers, CCIM**  
Senior Advisor  
239.315.7017  
chad.commers@svn.com



The information presented here is deemed to be accurate, but it has not been independently verified. We make no guarantee, warranty or representation. It is your responsibility to independently confirm accuracy and completeness. All SVN® offices are independently owned and operated.

# FOR LEASE - Retail Space

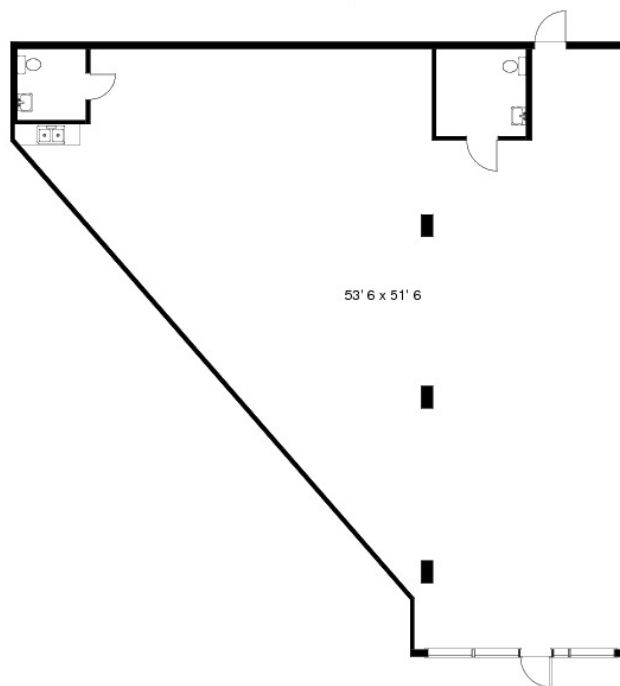
8793 EAST TAMIAMI TRAIL  
SUITE 116  
NAPLES, FL



TOTAL AREA 3372 sq. ft.

Prepared exclusively for Todd Sabin  
©2015 Precision Floorplans, Inc. This document is the copyright property of Precision Floorplans, Inc.  
Any other use may result in liability, reproduction, registration, and/or other legal action. All rights reserved. No part of this document may be reproduced without written permission from Precision Floorplans, Inc. (239) 315-7015 precision@svn.com and  
ALL RIGHTS RESERVED. 11-15-2015 11:00 AM 11/15/2015 11:00 AM

8793 EAST TAMIAMI TRAIL  
SUITE 118  
NAPLES, FL



TOTAL AREA 2508 sq. ft.

Prepared exclusively for Todd Sabin  
©2015 Precision Floorplans, Inc. This document is the copyright property of Precision Floorplans, Inc.  
Any other use may result in liability, reproduction, registration, and/or other legal action. All rights reserved. No part of this document may be reproduced without written permission from Precision Floorplans, Inc. (239) 315-7015 precision@svn.com and  
ALL RIGHTS RESERVED. 11-15-2015 11:00 AM 11/15/2015 11:00 AM

**Todd Sabin**  
Managing Director  
239.315.7015  
todd.sabin@svn.com

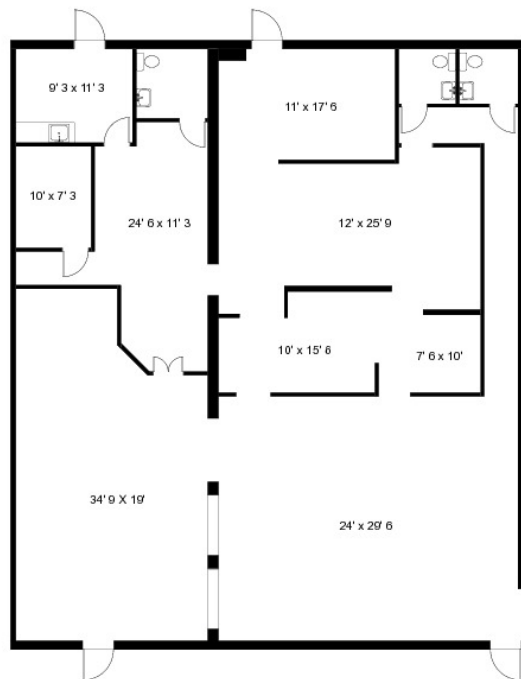
**Chad D. Commers, CCIM**  
Senior Advisor  
239.315.7017  
chad.commers@svn.com



The information presented here is deemed to be accurate, but it has not been independently verified. We make no guarantee, warranty or representation. It is your responsibility to independently confirm accuracy and completeness. All SVN® offices are independently owned and operated.

# FOR LEASE - Retail Space

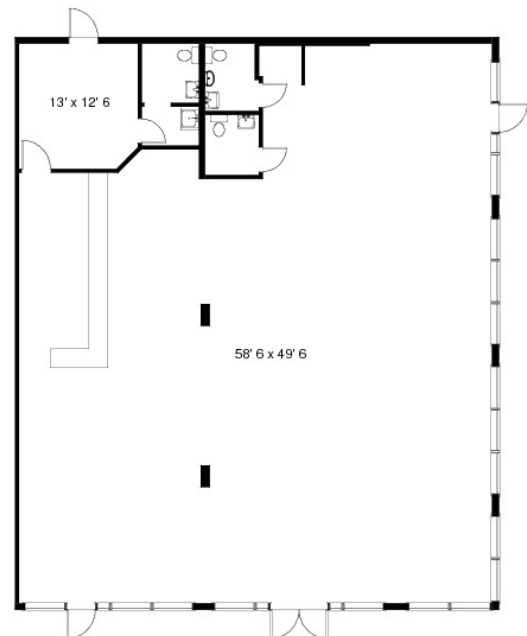
8793 TAMIAMI TRAIL EAST  
SUITE 204-205  
NAPLES, FL



TOTAL AREA 3000 sq. ft.

Prepared exclusively for Lely Square Partnership  
©2017 Precision Floorplans, Inc. This document is the copyright property of Precision Floorplans, Inc.  
Any other use may constitute a violation of applicable laws and regulations. All rights reserved. No part of this document may be reproduced without written permission from Precision Floorplans, Inc.  
All information is provided for informational purposes only and is not intended to be used as a basis for any legal or financial decision.

8795 EAST TAMIAMI TRAIL  
SUITES 207 & 208  
NAPLES, FL



TOTAL AREA 3060 sq. ft.

Prepared exclusively for Todd Sabin  
©2017 Precision Floorplans, Inc. This document is the copyright property of Precision Floorplans, Inc.  
Any other use may constitute a violation of applicable laws and regulations. All rights reserved. No part of this document may be reproduced without written permission from Precision Floorplans, Inc.  
All information is provided for informational purposes only and is not intended to be used as a basis for any legal or financial decision.

**Todd Sabin**  
Managing Director  
239.315.7015  
todd.sabin@svn.com

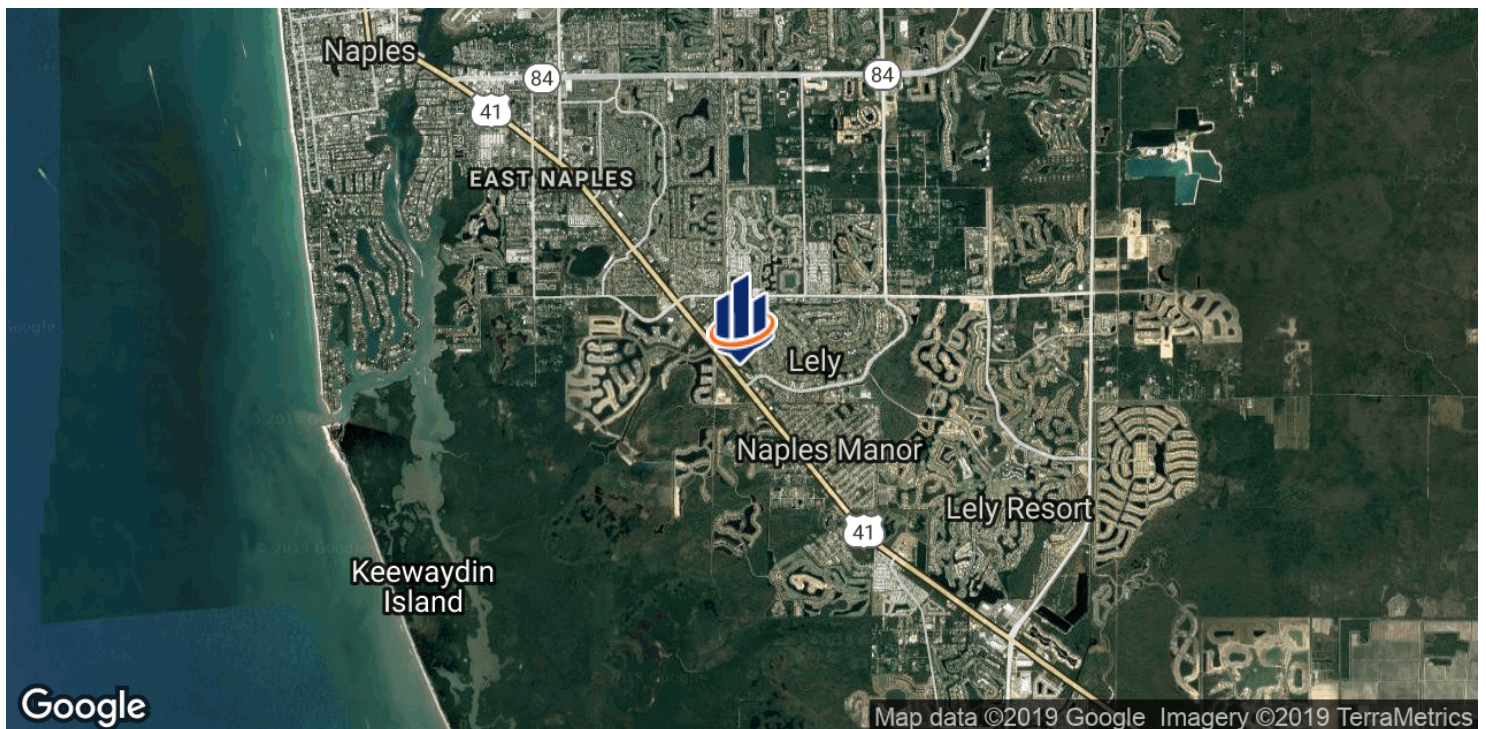
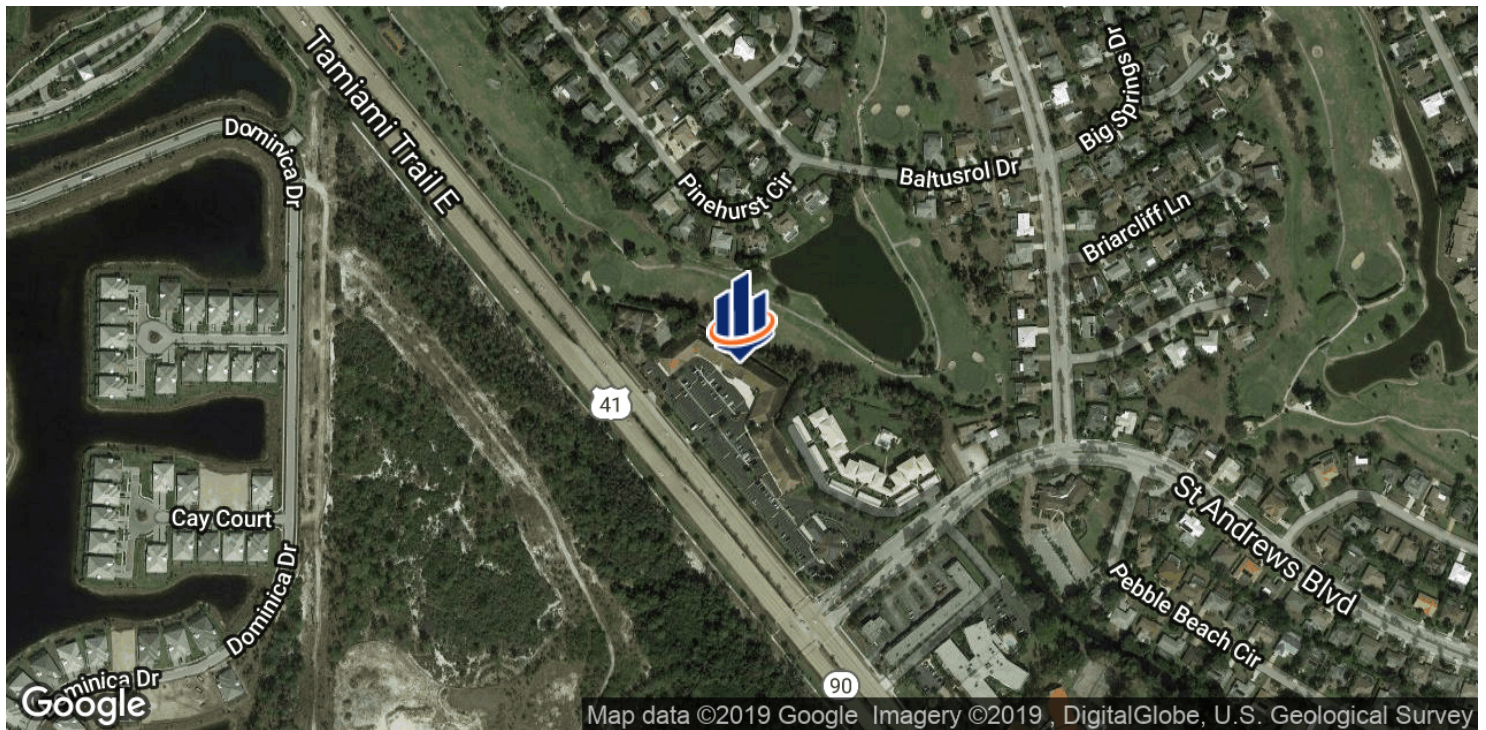
**Chad D. Commers, CCIM**  
Senior Advisor  
239.315.7017  
chad.commers@svn.com



The information presented here is deemed to be accurate, but it has not been independently verified. We make no guarantee, warranty or representation. It is your responsibility to independently confirm accuracy and completeness. All SVN® offices are independently owned and operated.



# FOR LEASE - Retail Space



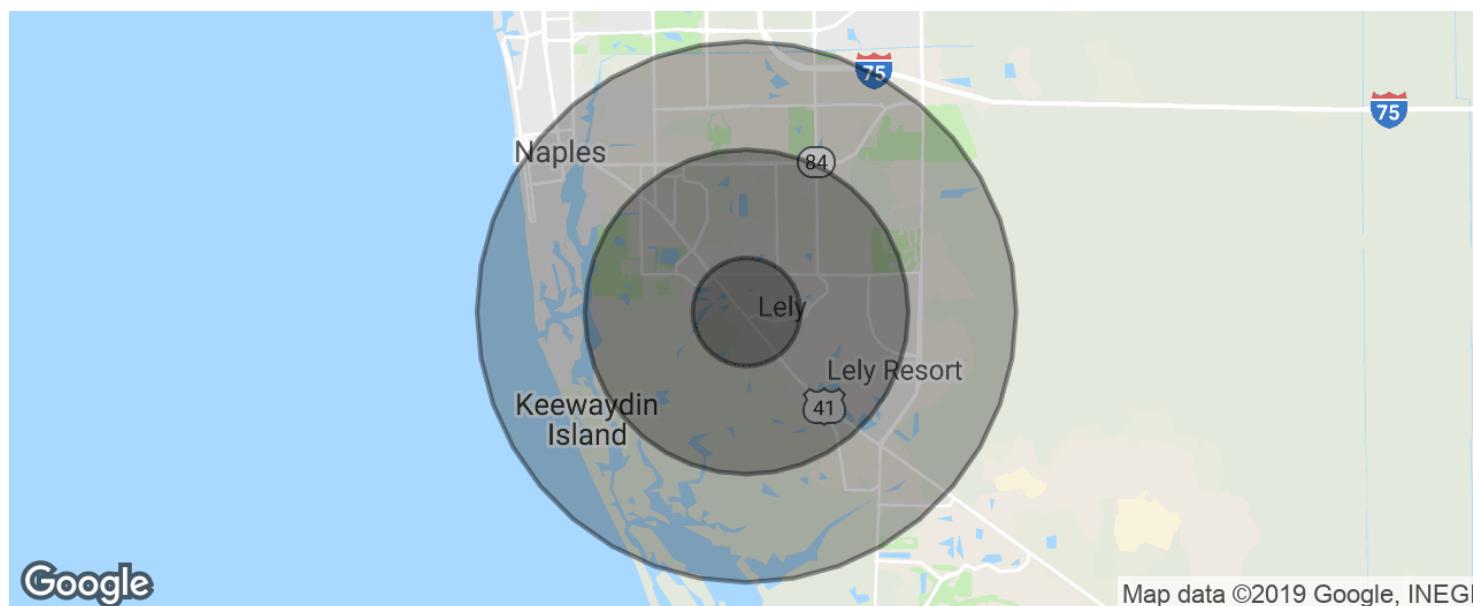
**Todd Sabin**  
Managing Director  
239.315.7015  
todd.sabin@svn.com

**Chad D. Commers, CCIM**  
Senior Advisor  
239.315.7017  
chad.commers@svn.com



The information presented here is deemed to be accurate, but it has not been independently verified. We make no guarantee, warranty or representation. It is your responsibility to independently confirm accuracy and completeness. All SVN® offices are independently owned and operated.

# FOR LEASE - Retail Space



## POPULATION

	1 MILE	3 MILES	5 MILES
Total population	4,716	38,712	86,095
Median age	55.4	47.6	46.3
Median age (Male)	53.5	46.4	44.7
Median age (Female)	56.1	48.6	47.9

## HOUSEHOLDS & INCOME

	1 MILE	3 MILES	5 MILES
Total households	2,123	15,283	33,838
# of persons per HH	2.2	2.5	2.5
Average HH income	\$69,428	\$69,022	\$74,996
Average house value	\$278,083	\$256,410	\$308,348

\* Demographic data derived from 2010 US Census

**Todd Sabin**  
Managing Director  
239.315.7015  
todd.sabin@svn.com

**Chad D. Commers, CCIM**  
Senior Advisor  
239.315.7017  
chad.commers@svn.com



The information presented here is deemed to be accurate, but it has not been independently verified. We make no guarantee, warranty or representation. It is your responsibility to independently confirm accuracy and completeness. All SVN® offices are independently owned and operated.