

A LOCATION,
ENVIRONMENT &
OPPORTUNITY
TO ENTICE

100 TICE BOULEVARD

Woodcliff Lake, New Jersey

CBRE

209,000 SF

FULL BUILDING AVAILABLE

HEADQUARTERS QUALITY

WALKABLE TO AMENITIES

ON-SITE COVERED PARKING

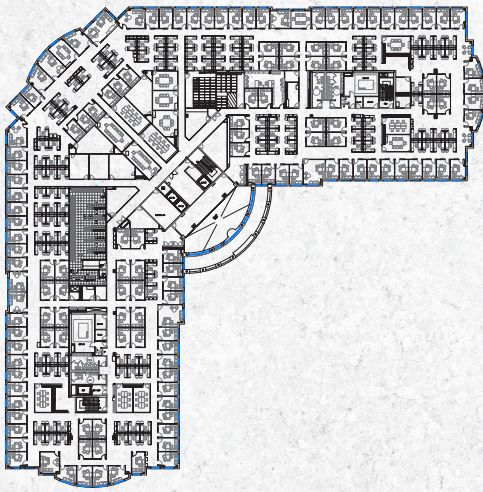
SIGNAGE OPPORTUNITY



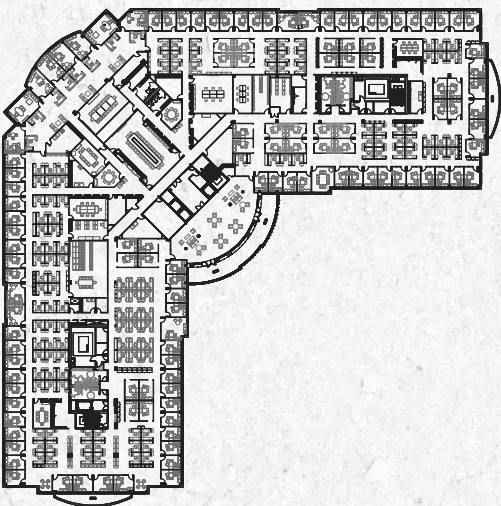
FIRST FLOOR | 70,000 SF



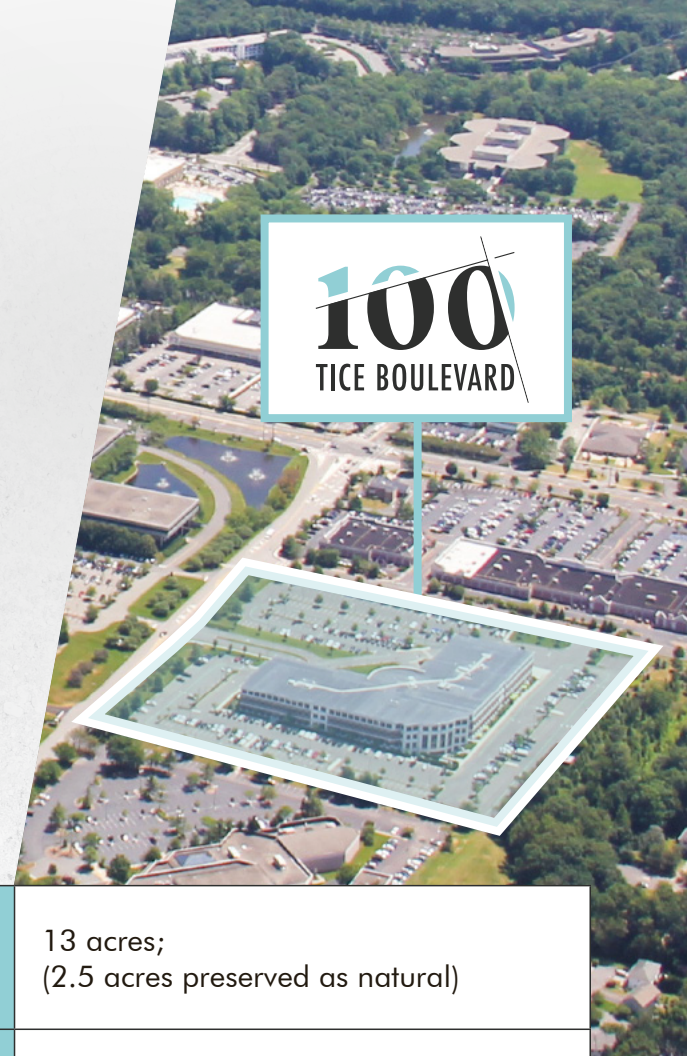
SECOND FLOOR | 70,000 SF



THIRD FLOOR | 70,000 SF



CBRE



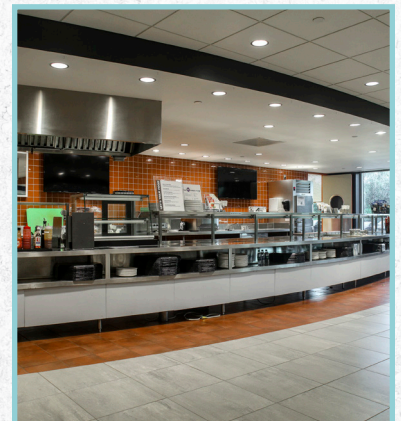
ACRES	13 acres; (2.5 acres preserved as natural)
YEAR BUILT	2005
FLOORS	Three (3) stories
RENTABLE SQUARE FEET	±209,000 sq. ft. total
PARKING	425 surface parking spaces; 172 covered (under building)
PARK AND BUILDING AMENITIES	On-site management; Full-service café; Adjacent to the Hilton Hotel and training center; Covered parking; Conference center; Walking distance to the Tice's Corner Marketplace, a lifestyle center which includes 27 distinctive stores (Apple, Panera, Bareburger, etc.)
SECURITY	Card access 24 hours per day, 7 days per week



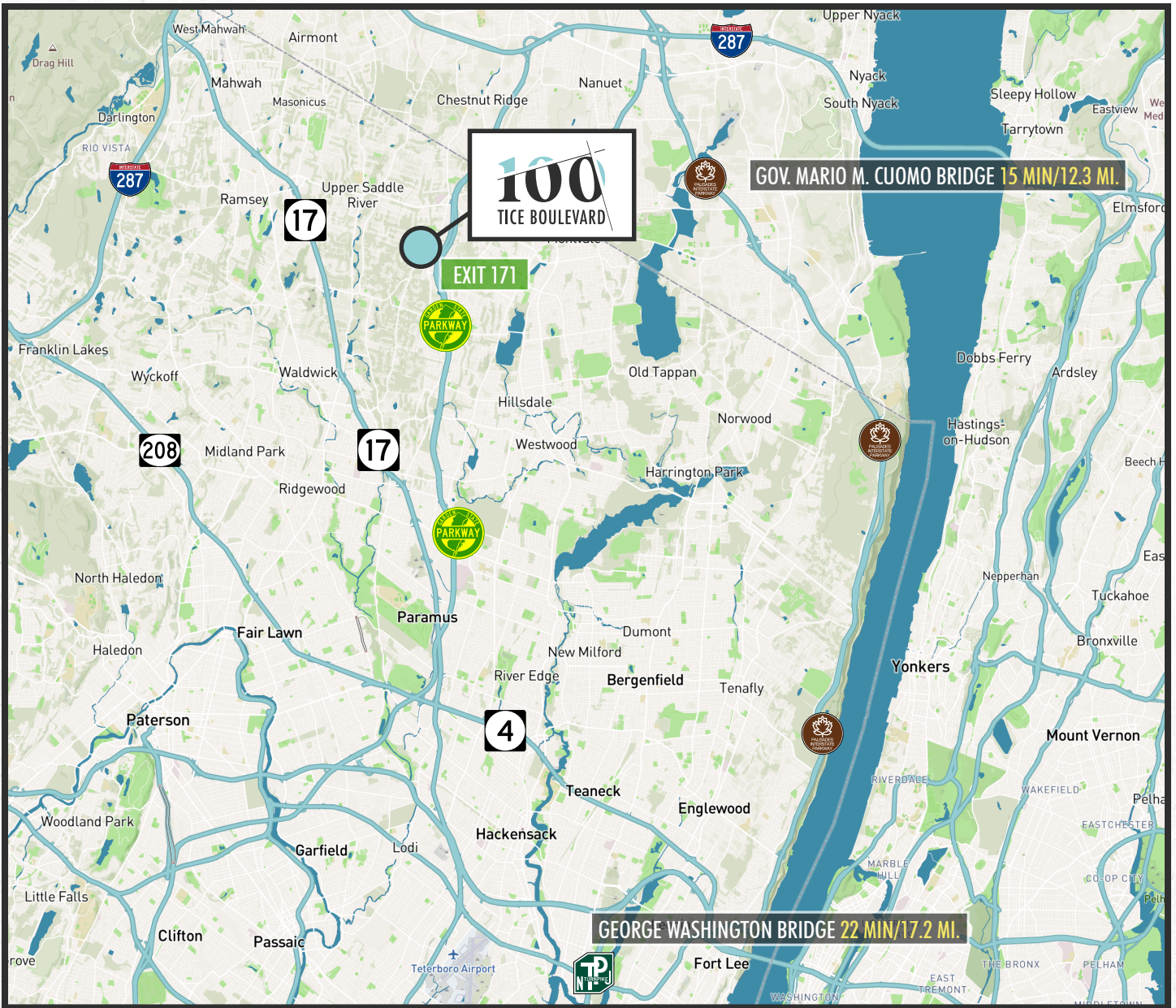
TICE'S CORNER MARKETPLACE

TWENTY-SEVEN DISTINCTIVE STORES

- | | |
|-----------------------|--------------------------|
| Anthropologie | Francesca's |
| Hallmark | Talbot's |
| J.Crew | Chico's |
| Bluemercury | White House Black Market |
| Williams-Sonoma | Apple Store |
| South Moon Under | Free People |
| Pottery Barn | Panera Bread |
| Banana Republic | Ruby and Jenna |
| Victoria's Secret | The Parlour Salon |
| Bath & Body Works | Tempur-Pedic |
| GAP | Organic Bareburger |
| James Tracey Eye Care | Frenchies Nail Care |
| Athleta | |
| Madewell | |
| F. Silverman | |



CBRE



Contact us for more information:

JON MEISEL

+1 201 247 8598
jon.meisel@cbre.com

ERIN WENZLER

+1 201 712 5893
erin.wenzler@cbre.com

JOSEPH SARNO

+1 732 509 2890
joseph.sarno@cbre.com



CBRE

© 2020 CBRE, Inc. All rights reserved. This information has been obtained from sources believed reliable, but has not been verified for accuracy or completeness. You should conduct a careful, independent investigation of the property and verify all information. Any reliance on this information is solely at your own risk.