

FOR LEASE

STERLING CORPORATE CENTER
38219 MOUND ROAD
STERLING HEIGHTS, MI 48310



PROPERTY FEATURES:

- 5,770 SF to 8,683 SF build-to-suit spaces available
- Building signage available
- Upgraded interior and exterior finishes
- Centrally located on Mound Road, minutes from I-696 & M-59
- Excellent access to freeways, restaurants, and banks
- 10,000 SF of lower level storage space
- Ample on-site parking
- Lease rate: \$16.00 to \$18.00 modified gross



FOR MORE INFORMATION PLEASE CONTACT:

RICK TABBI

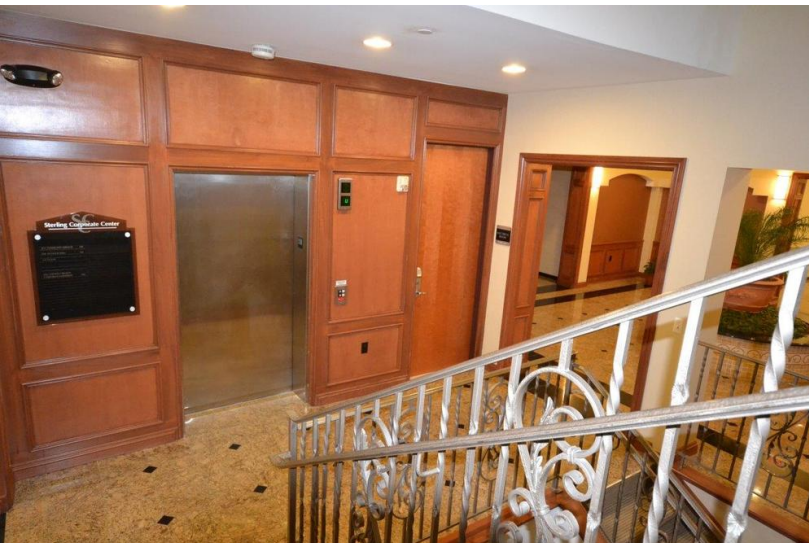
rick.tabbi@freg.com

248.324.2000

eCODE 841

FOR LEASE

STERLING CORPORATE CENTER
38219 MOUND ROAD
STERLING HEIGHTS, MI 48310



FOR MORE INFORMATION PLEASE CONTACT:

RICK TABBI rick.tabbi@freg.com

248.324.2000
eCODE 841