

**REDUCED RENTAL RATES**



## Property Highlights

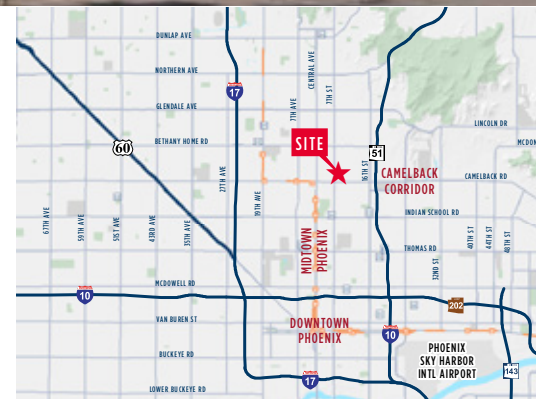
- ±63,649 total square feet
- Three-building, Spanish-style Office Project; one 3-story and two, 2-story office buildings
- Built In 1984
- 4.00/1,000 parking ratio  
1.40/1,000 covered at \$40.00/mo
- \$20.00 - \$22.00 PSF lease rate

## Available Suites

- A-205 ±4,43 RSF
- A-206 ±2,363 RSF
- B-114 ±2,509 RSF
- B-214 ±1,157 RSF
- B-300 ±1,526 RSF
- B-305 ±4,953 (Medical)
- C-125 ±1,823 RSF
- C-223 ±1,332 RSF

## Building Features

- Interconnected pedestrian bridge
- Private balconies
- Courtyard fountain
- Modern upgrades with old-world charm
- Walking distance to numerous restaurants and retail shopping amenities



### Gordon Raguse

Managing Director

+1 602 224 4452

[gordon.raguse@cushwake.com](mailto:gordon.raguse@cushwake.com)

### Chris Jantz

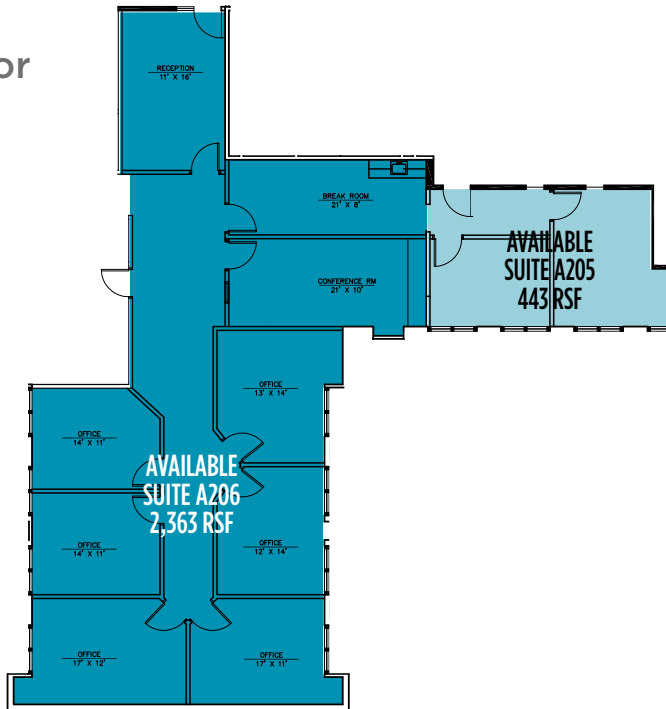
Director

+1 602 224 4485

[chris.jantz@cushwake.com](mailto:chris.jantz@cushwake.com)

2555 E Camelback Road, Suite 400  
Phoenix, Arizona  
main +1 602 954 9000  
fax +1 602 253 0528  
[cushmanwakefield.com](http://cushmanwakefield.com)

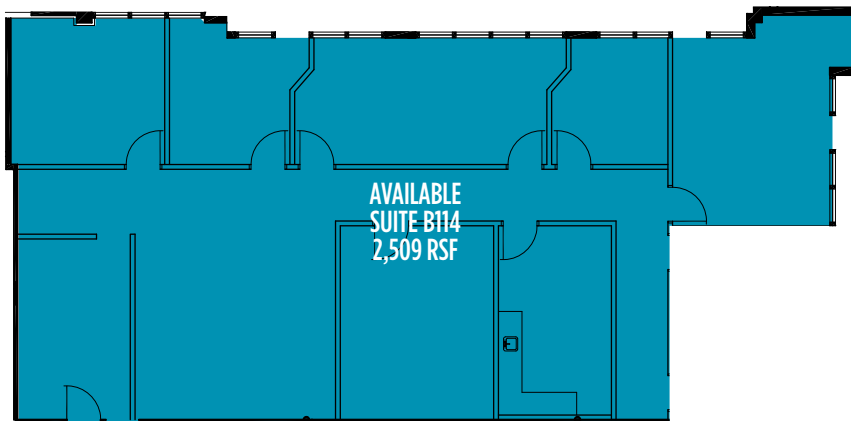
## Building A Second Floor



## Available

- Suite A205 - 443 RSF
- Suite A206 - 2,363 RSF

## Building B First Floor



## Available

- Suite B114 - 2,509 RSF

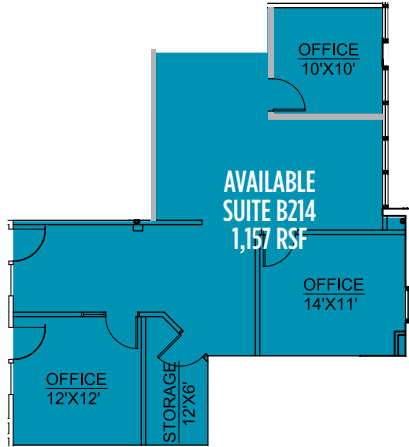
**Gordon Raguse**  
Managing Director  
+1 602 224 4452  
gordon.raguse@cushwake.com

**Chris Jantz**  
Director  
+1 602 224 4485  
chris.jantz@cushwake.com

2555 E Camelback Road  
Suite 400  
Phoenix, Arizona  
main +1 602 954 9000  
fax +1 602 253 0528  
[cushmanwakefield.com](http://cushmanwakefield.com)



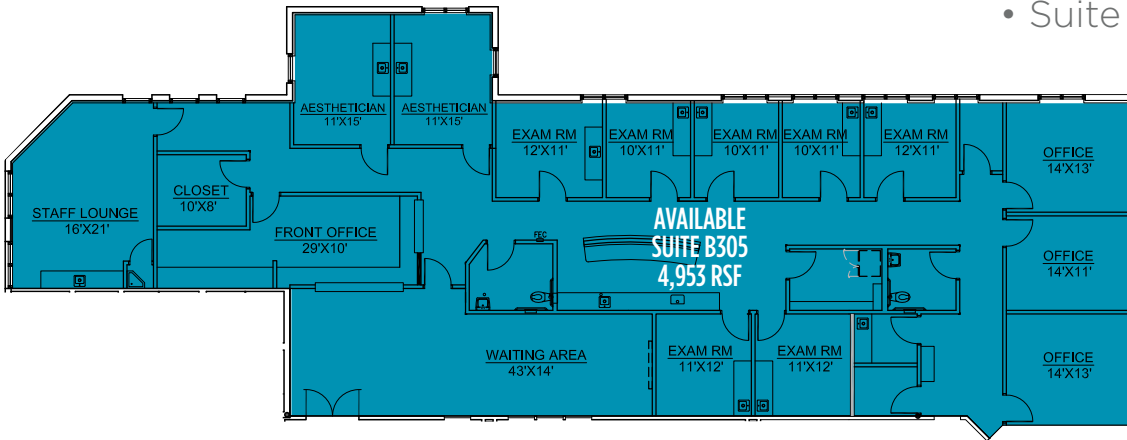
**Building B  
Second Floor**



**Available**

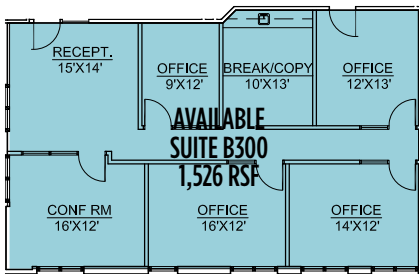
- Suite B214 - 1,157 RSF

**Building B  
Third Floor**



**Available**

- Suite B300 - 1,526 RSF
- Suite B305 - 4,953 RSF



**Gordon Raguse**  
 Managing Director  
 +1 602 224 4452  
 gordon.raguse@cushwake.com

**Chris Jantz**  
 Director  
 +1 602 224 4485  
 chris.jantz@cushwake.com

2555 E Camelback Road  
 Suite 400  
 Phoenix, Arizona  
 main +1 602 954 9000  
 fax +1 602 253 0528  
**cushmanwakefield.com**



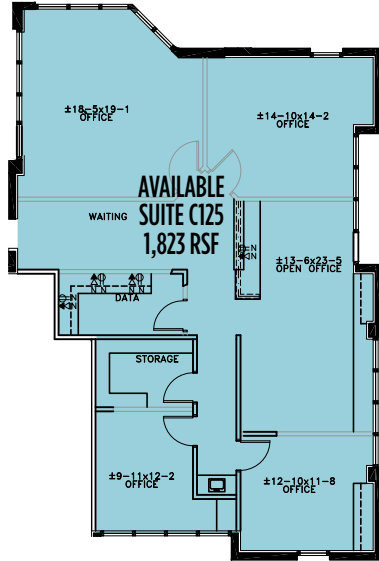
**CUSHMAN & WAKEFIELD**

FOR LEASE

# Paragon Plaza

5333 North 7th Street | Phoenix, Arizona 85014

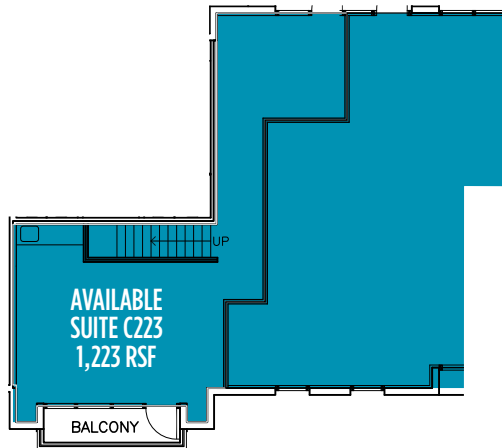
## Building C First Floor



## Available

- Suite C125 - 1,823 RSF

## Building C Second Floor



## Available

- Suite C223 - 1,332 RSF

**Gordon Raguse**  
 Managing Director  
 +1 602 224 4452  
 gordon.raguse@cushwake.com

**Chris Jantz**  
 Director  
 +1 602 224 4485  
 chris.jantz@cushwake.com

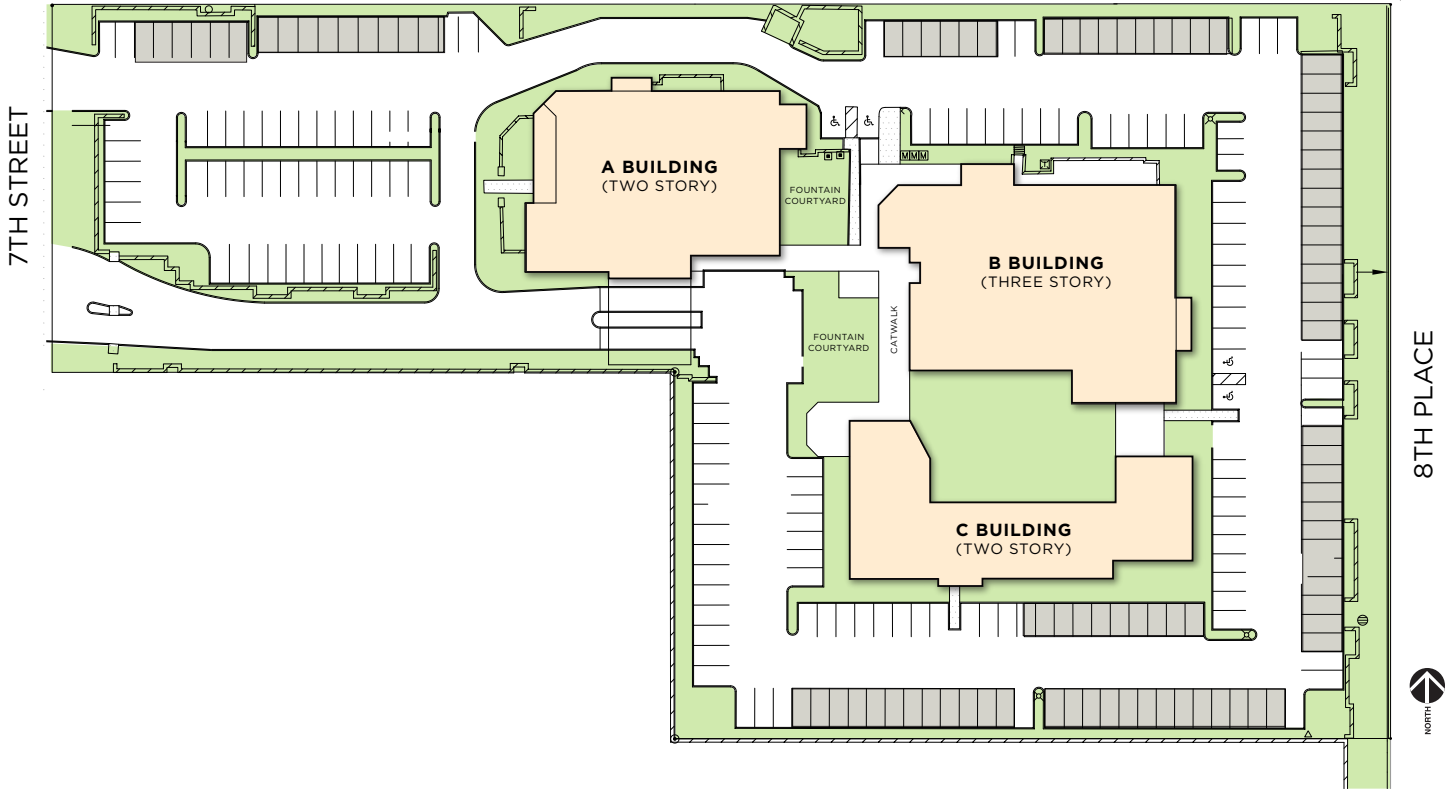
2555 E Camelback Road  
 Suite 400  
 Phoenix, Arizona  
 main +1 602 954 9000  
 fax +1 602 253 0528  
**cushmanwakefield.com**



FOR LEASE

# Paragon Plaza

5333 North 7th Street | Phoenix, Arizona 85014



**Gordon Raguse**  
Managing Director  
+1 602 224 4452  
gordon.raguse@cushwake.com

**Chris Jantz**  
Director  
+1 602 224 4485  
chris.jantz@cushwake.com

2555 E Camelback Road  
Suite 400  
Phoenix, Arizona  
main +1 602 954 9000  
fax +1 602 253 0528  
**cushmanwakefield.com**