
8000 SF INDUSTRIAL/WAREHOUSE BUILDING

1061 South High Street, Harrisonburg, VA 22801

Executive Summary



OFFERING SUMMARY

Available SF: 4,000 - 8,000 SF

Lease Rate: \$5.00 SF/yr (Net)

Total Building Size: 16,000 SF
2-Story Building

Zoning: M-1

Utilities: Public Water/Sewer
Gas Available
220 Amp Electric



PROPERTY OVERVIEW

High traffic location! Solid structure with reasonable utilities, ample parking. Total of 13 offices, warehouse, 4 bathrooms, 2 docks, one ramp, 2 high overhead doors. Can be split into (2) 4000 SF units.

For More Information:

Butch Strawderman
540.246.5959
butch.strawderman@cottonwood.com

Craig Anders
540.383.6054
craig.anders@cottonwood.com

COTTONWOOD
COMMERCIAL
A COMMERCIAL REAL ESTATE BROKERAGE

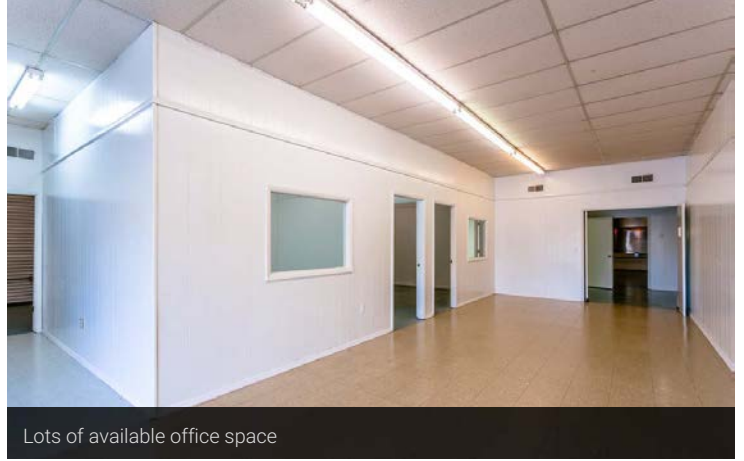
8000 SF INDUSTRIAL/WAREHOUSE BUILDING

1061 South High Street, Harrisonburg, VA 22801

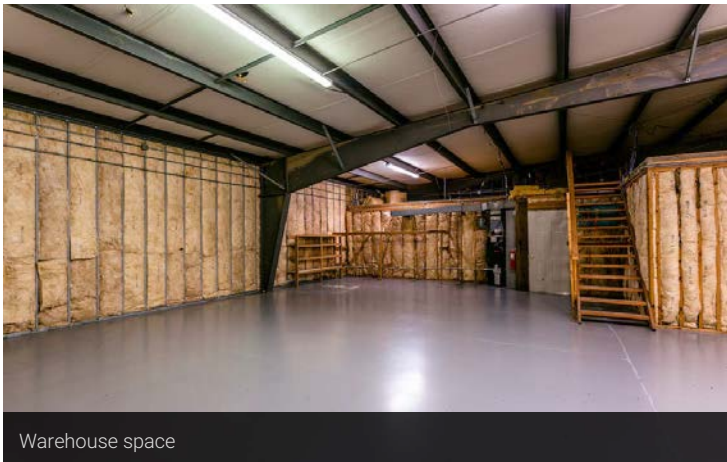
Additional Photos



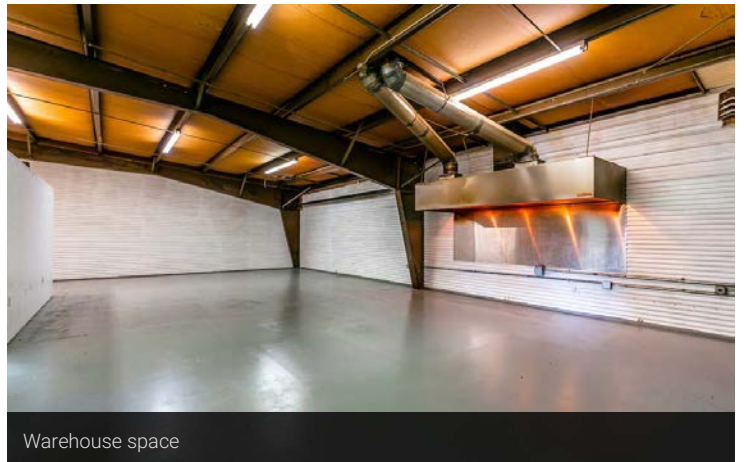
Solid structure



Lots of available office space



Warehouse space



Warehouse space



Ample parking



Located off heavily traveled South High Street in Harrisonburg, VA

For More Information:

Butch Strawderman

540.246.5959

butch.strawderman@cottonwood.com

Craig Anders

540.383.6054

craig.anders@cottonwood.com

COTTONWOOD
COMMERCIAL
A COMMERCIAL REAL ESTATE BROKERAGE

8000 SF INDUSTRIAL/WAREHOUSE BUILDING

1061 South High Street, Harrisonburg, VA 22801

Location Maps



For More Information:

Butch Strawderman

540.246.5959

butch.strawderman@cottonwood.com

Craig Anders

540.383.6054

craig.anders@cottonwood.com

COTTONWOOD
COMMERCIAL
A COMMERCIAL REAL ESTATE BROKERAGE