

FOR LEASE

Northeast Medical Center

4000 Medical Center Drive
Fayetteville, New York 13066

Available:
3,681± SF



PHYSICIANS REALTY TRUST



CUSHMAN &
WAKEFIELD



Pyramid Brokerage
Company

About the Property

Northeast Medical Center is an approximately 166,628 SF state of the art, fully integrated off-campus medical office building located in the eastern suburbs of Syracuse.

St. Joseph's Hospital anchors the building, occupying more than half of the facility. Outpatient specialties on-site include urgent care, primary care, 24-hour ambulatory surgery center, dialysis center, sleep center, orthopedics, radiology, OB/GYN, general surgery, dermatology, neurosurgery, gastroenterology, urology, wound care, cardiology, ophthalmology, and physical therapy.

Building Properties

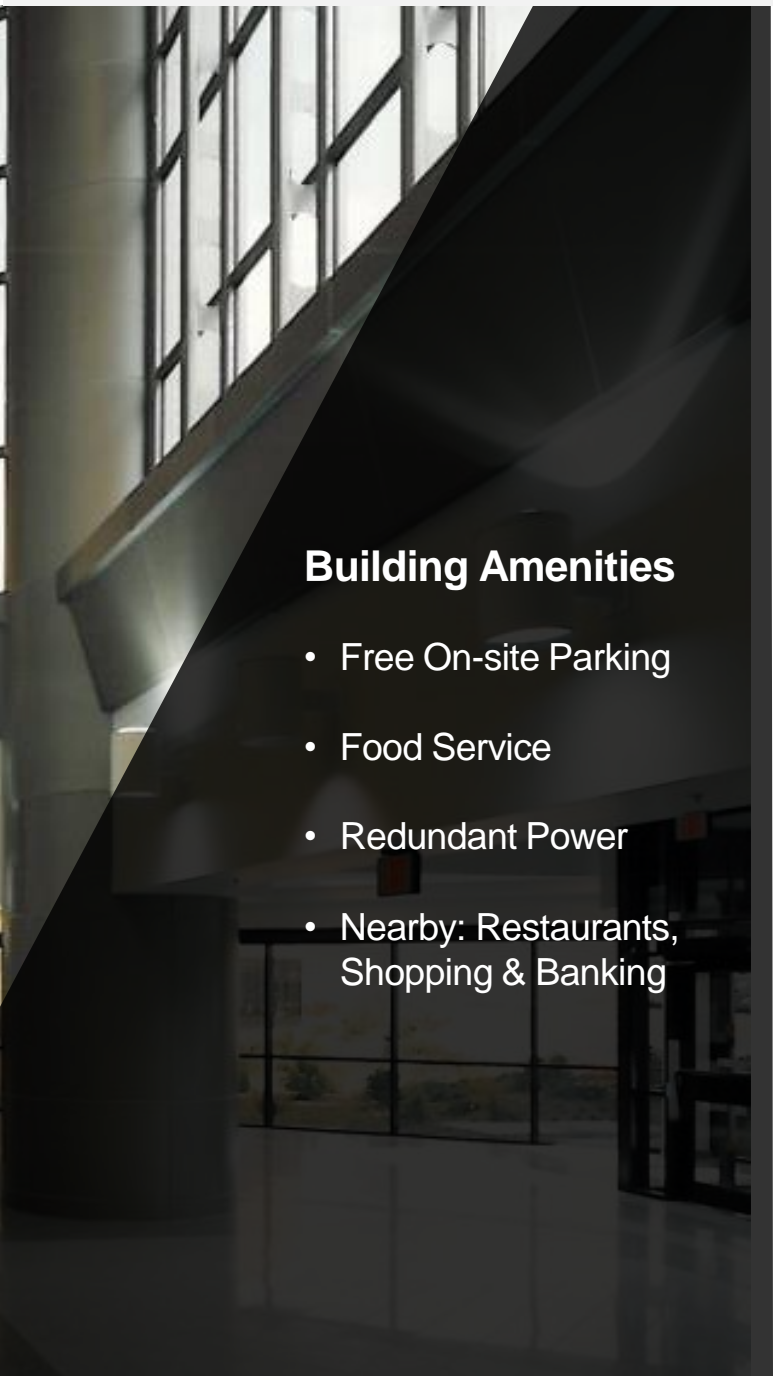
Year Built 1998

Total RSF 166,628± SF

Number of Floors 5

Parking 1,106 spaces

Available SF 3,861± SF

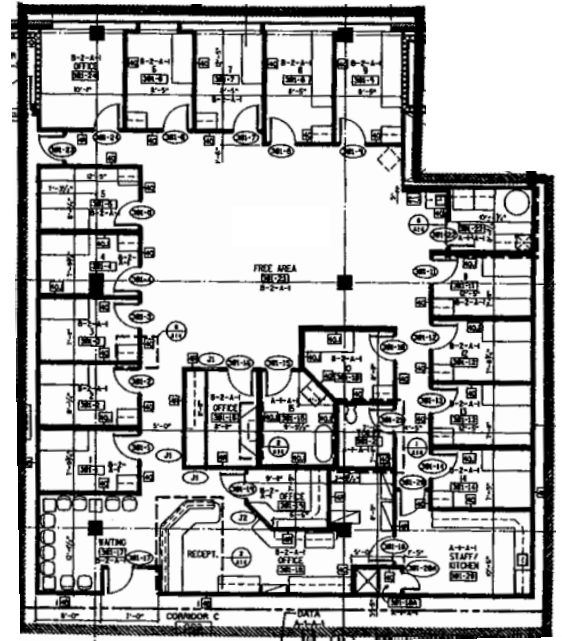
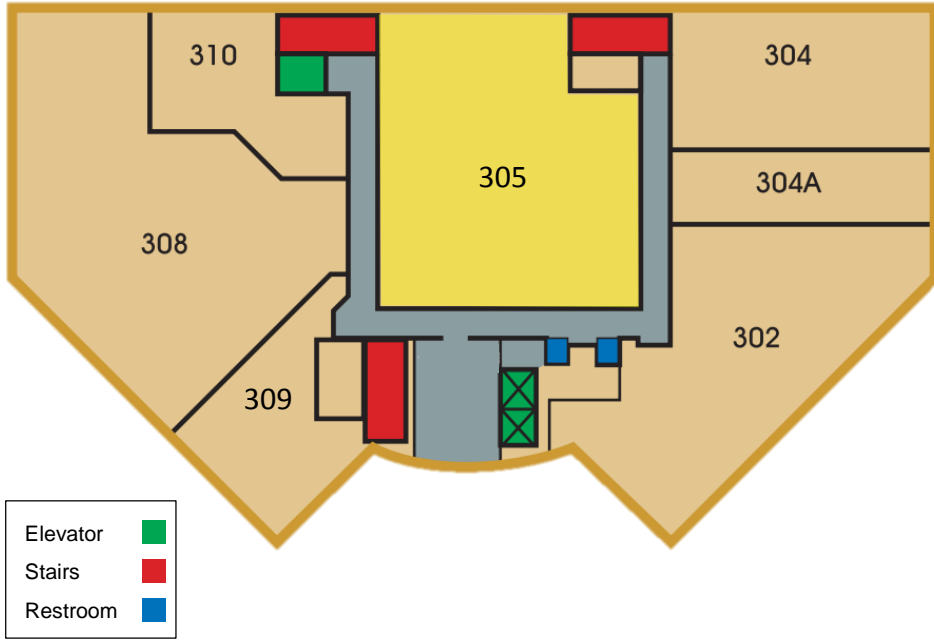


Building Amenities

- Free On-site Parking
- Food Service
- Redundant Power
- Nearby: Restaurants, Shopping & Banking

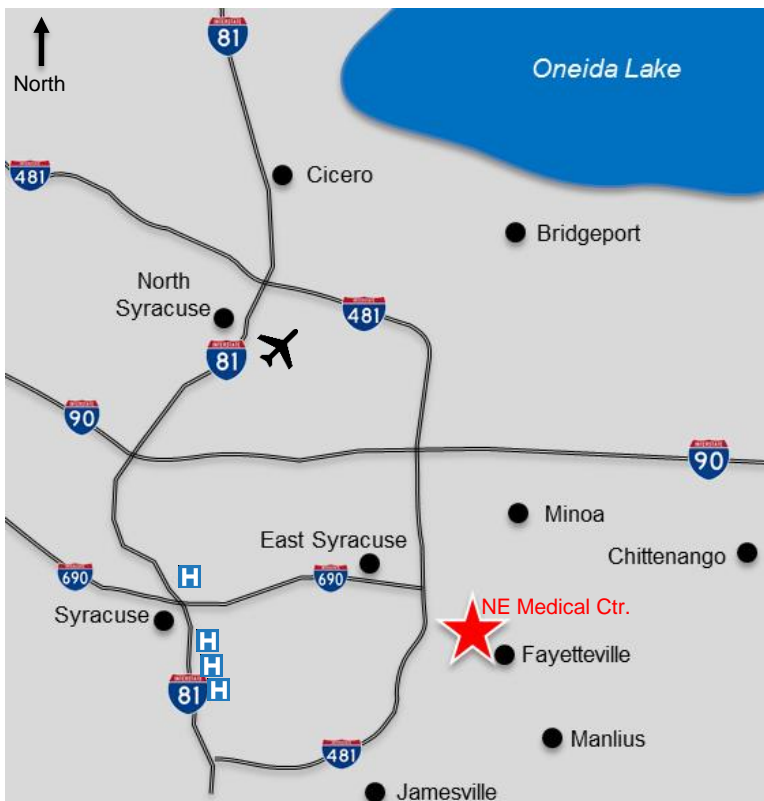
Availability

Suite	RSF
305	3,861± SF



Suite 305 – 3,861± SF

Location Map



Northeast Medical Center is located in the eastern suburb of Syracuse in Fayetteville, New York.

Northeast Medical Center is nine miles (18-minute drive time) from St. Joseph's Hospital, Upstate Medical University Hospital, Crouse Hospital, and the VA Medical Center. It is 12 miles (22-minute drive time) from Upstate University Hospital – Community Campus.

Northeast Medical Center is accessed from I-481 using exit 3E, East on Genesee Street, and North on North Burdick Street. Northeast Medical Center is close to the eastern suburbs, including Minoa, Manlius, Jamesville, and Chittenango.

This property is the largest medical building in the the eastern suburb of Syracuse, New York.



NORTHEAST MEDICAL CENTER

For more information, please contact:

Brian M. Balash, CCIM
Real Estate Salesperson
+1 315 445 8506
bbalash@pyramidbrokerage.com

Elaina Pirro
Real Estate Salesperson
+1 315 445 8520
epirro@pyramidbrokerage.com

