

55 LIBERTY STREET



SPACE DETAILS

LOCATION

North block between Liberty Place and Nassau Street

APPROXIMATE SIZE

Second Floor	4,559 SF
Second Floor Mezzanine	2,300 SF
Total	6,859 SF

POSSESSION

Arranged

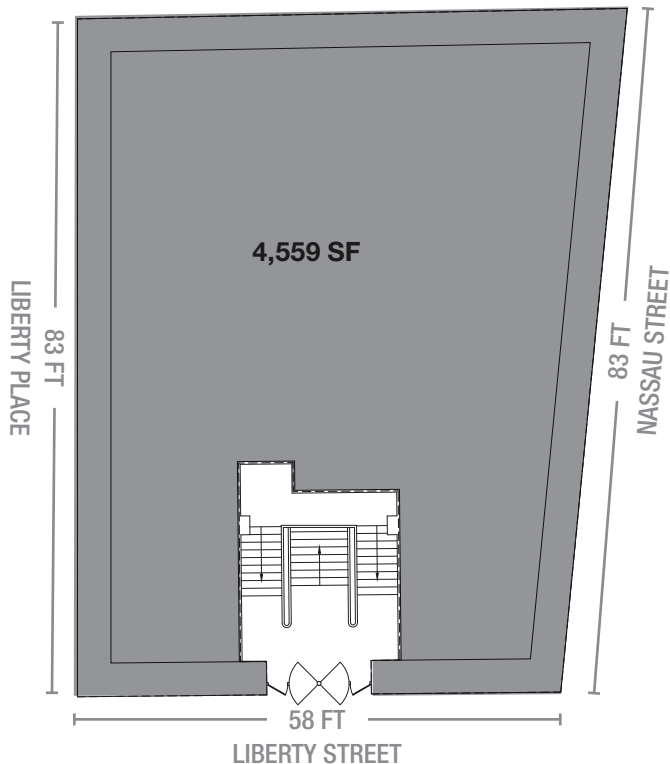
TERM

Long term

SITE STATUS

Currently Pound & Pence

SECOND FLOOR



FRONTAGE

58 FT on Liberty Street
83 FT on Liberty Place
83 FT on Nassau Street

NEIGHBORS

Starbucks, Pret A Manger, Century 21, Godiva Chocolatier, Eataly, Shake Shack, Nobu Downtown, Anthropologie, The Capital Grille, Chick-fil-A and Whole Foods Market (coming soon)

COMMENTS

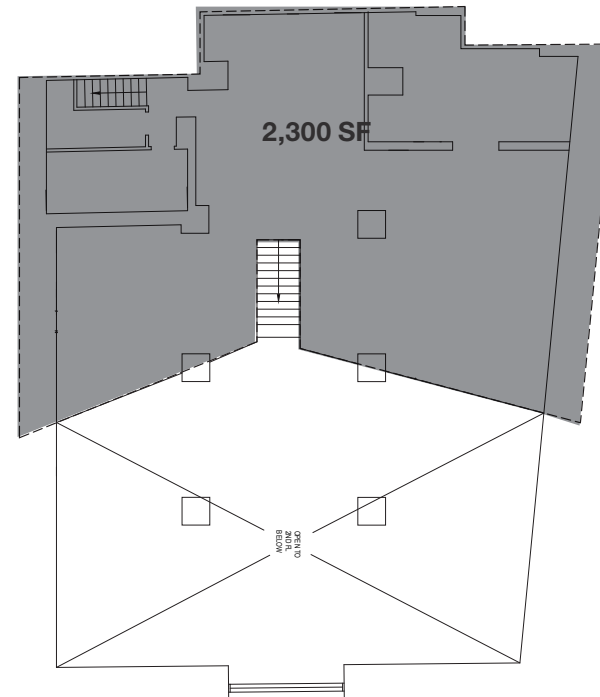
Prime fitness, educational, medical or office opportunity

Located in the heart of the Financial District, the fourth largest business district in the United States

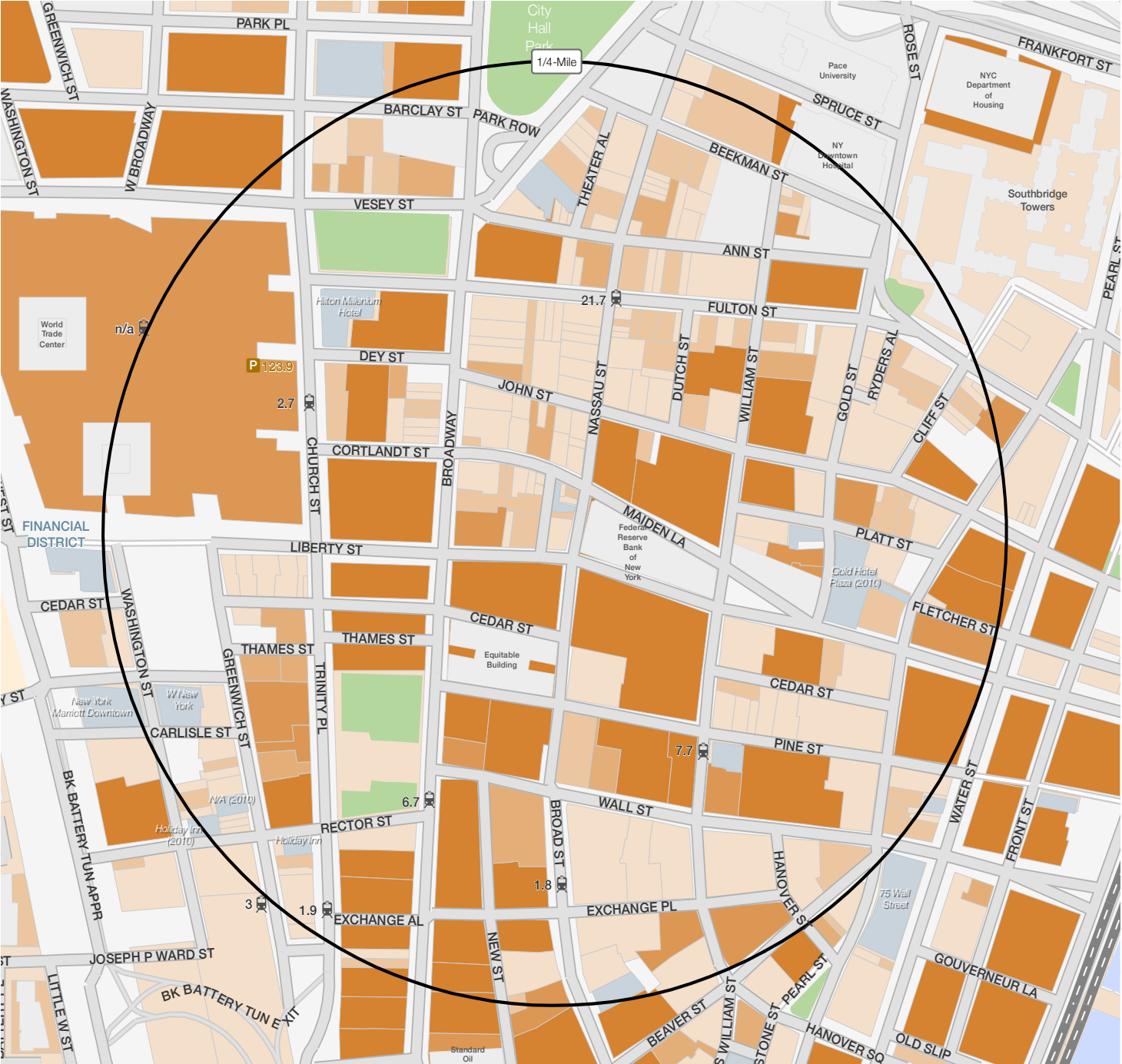
Tremendous 224 FT of wraparound frontage in a gorgeous Gothic Revival co-op tower

Potential to remove Mezzanine to have a 4,559 SF space with 16 FT 2 IN ceilings

SECOND FLOOR MEZZANINE



AREA DEMOGRAPHICS



OFFICE AREA PER NUMBER BUILDINGS

- Less than 1,000
- 1,000 - 60,000
- 60,000 - 125,000
- 125,000 - 275,000
- Greater than 275,000

Subway & Ridership Annual 2015 (millions)

- M Subway & Ridership Annual 2015 (millions)
- P PATH & Ridership Annual 2015 (millions)

AREA RETAIL



- BROOKFIELD PLACE RETAIL**
- BONOBOS
 - BOTTEGA VENETA
 - BURBERRY
 - CLUB MONACO
 - COS BAR
 - DAVIDOFF
 - DIANE VON FURSTENBERG
 - HERMES
 - J.CREW
 - JUDITH & CHARLES
 - MICHAEL KORS
 - OMEGA
 - PAUL SMITH
 - SAKS FIFTH AVENUE
 - SALVATORE FERRAGAMO
 - SANT AMBROEUS
 - THEORY
 - TORY BURCH
 - VILLEBREQVIN
 - VINCE
 - ZEGNA

- WORLD TRADE CENTER RETAIL**
- AESOP
 - ALDO
 - ASICS
 - BOSE
 - BREITLING
 - CAMPER
 - CAUDALIE
 - COLE HAAN
 - DESIGNER EYES
 - DESIGUAL
 - DUNE LONDON
 - EDWARD BEINER
 - FOLLI FOLLIE
 - FOSSIL
 - HUGO BOSS
 - JOHN BARRETT
 - JOHN VARVATOS
 - KIEHL'S
 - L'OCCITANE EN PROVENCE
 - LINKS OF LONDON
 - L.K. BENNETT
 - LONGINES
 - MAC COSMETICS
 - MICHAEL KORS
 - MONTBLANC
 - PANDORA
 - REISS
 - STUART WEITZMAN
 - SWATCH
 - THOMAS SABO
 - TISSOT
 - TUMI
 - TURNBULL & ASSER
 - VINCE CAMUTO
 - ZADIG & VOLTAIRE

CONTACT EXCLUSIVE AGENTS

RAVI IDNANI
212.916.2938
ravi.idnani@ngkf.com

ANDREW STERN
212.351.9353
andrew.stern@ngkf.com



NGKF.COM

© 2019 NEWMARK KNIGHT FRANK RETAIL. The information contained herein has been obtained from sources deemed reliable but has not been verified and no guarantee, warranty or representation, either express or implied, is made with respect to such information. Terms of sale or lease and availability are subject to change or withdrawal without notice.