

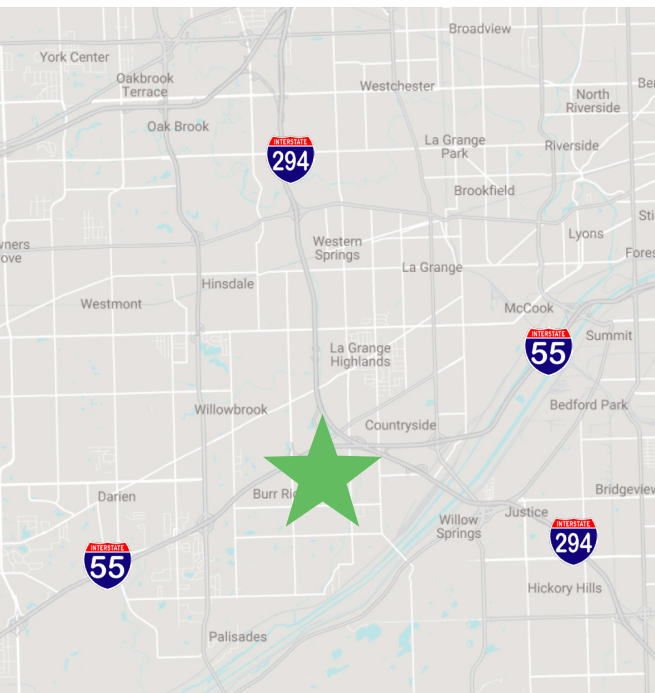


# BURR RIDGE BUSINESS CENTER 745 MCCLINTOCK DRIVE

CLASS A OFFICE SPACE AVAILABLE FOR LEASE



[www.BurrRidge-BusinessCenter.com](http://www.BurrRidge-BusinessCenter.com)



## AVAILABLE

- > Suite 230: **6,900 SF**
- > Suite 300: **4,907 SF**
- > Suite 330: **2,160 SF**

## HIGHLIGHTS

- > Institutionally owned, Class A, 3-story office building
- > Offers multiple size options.
- > Located in prestigious Burr Ridge, IL
- > Lobby features granite flooring with wood paneled walls
- > Close proximity to abundant amenities such as restaurants, hotels, health club facility, etc.
- > Easily accessible to I-55 and all major expressways via County Line Road

## DETAILS & PRICING

- > Total Building: **62,148 SF**
- > Parking: **4:1,000 SF**
- > Year Built: **1988**
- > Lease Price: **\$25.50 PSF**



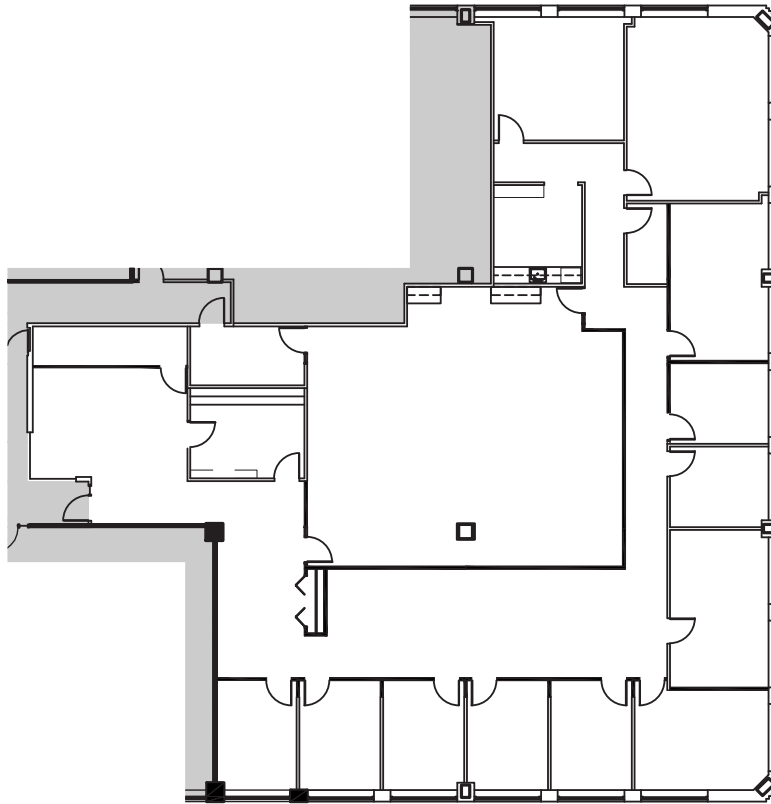
**RAWLY LANTZ**  
630.729.7944  
rlantz@cawleychicago.com



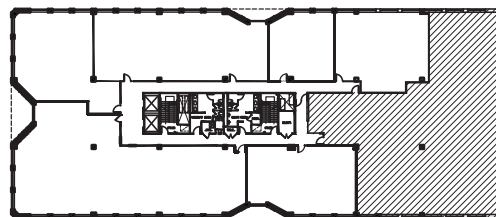


# BURR RIDGE BUSINESS CENTER 745 MCCLINTOCK DRIVE

SUITE 230 | 6,900 SF



BUILDING LAYOUT



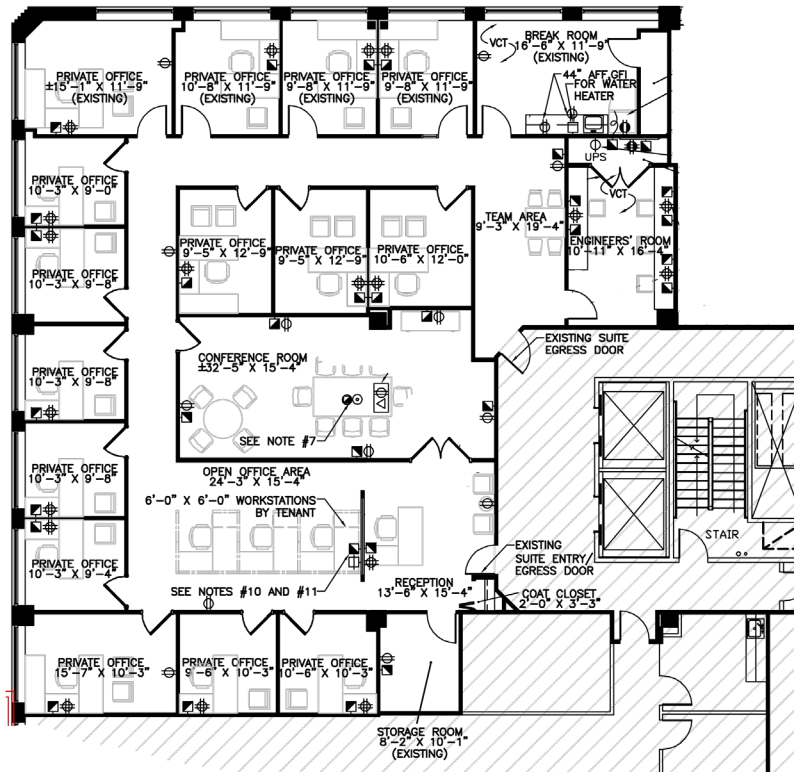
RAWLY LANTZ  
630.729.7944  
rlantz@cawleychicago.com



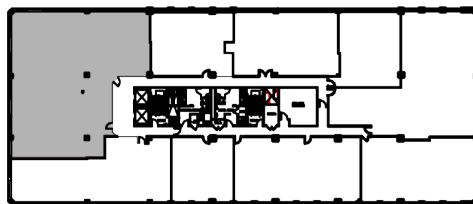


# BURR RIDGE BUSINESS CENTER 745 MCCLINTOCK DRIVE

SUITE 300 | 4,907 SF



BUILDING LAYOUT



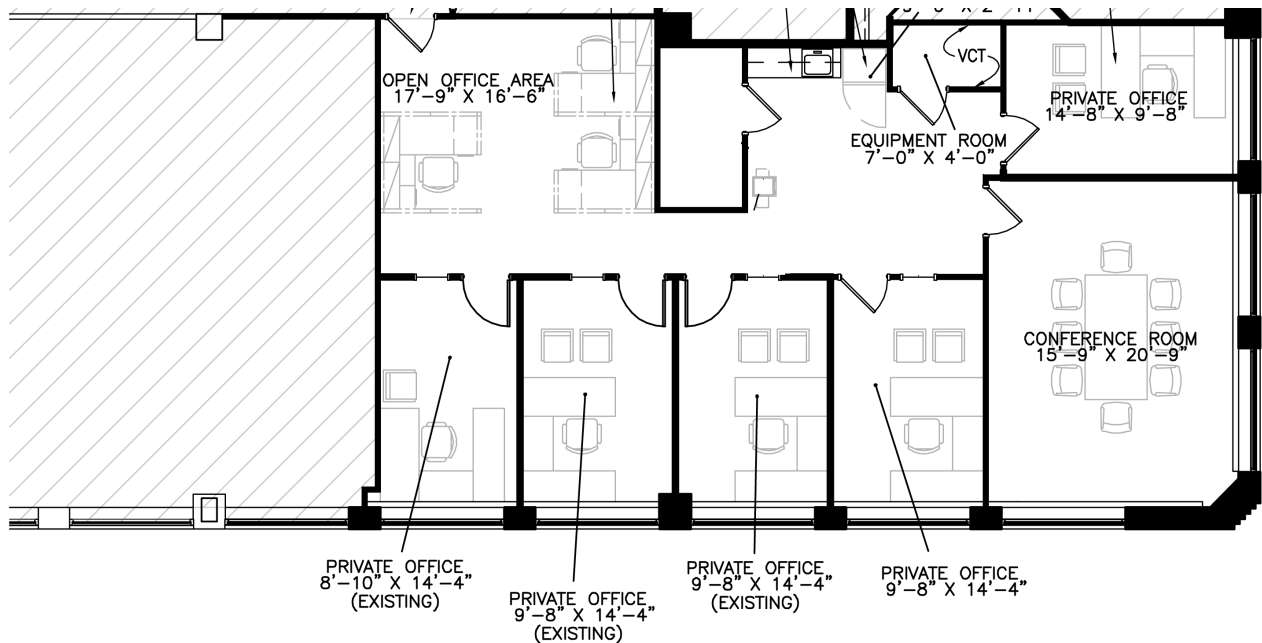
**RAWLY LANTZ**  
630.729.7944  
rlantz@cawleychicago.com





# BURR RIDGE BUSINESS CENTER 745 MCCLINTOCK DRIVE

SUITE 330 | 2,160 SF



RAWLY LANTZ  
630.729.7944  
rlantz@cawleychicago.com

