

227 S O U T H W E B E R

WEBER RD & LILY CACHE LN
BOLINGBROOK, IL

RETAIL
SPACE AVAILABLE

RETAIL SPACE AVAILABLE

227 S. WEBER STREET

Bolingbrook, IL



SPACE AVAILABLE

2,503 SF Freestanding Restaurant with Drive-Thru
 1.12 Acre Site (48,966 SF)

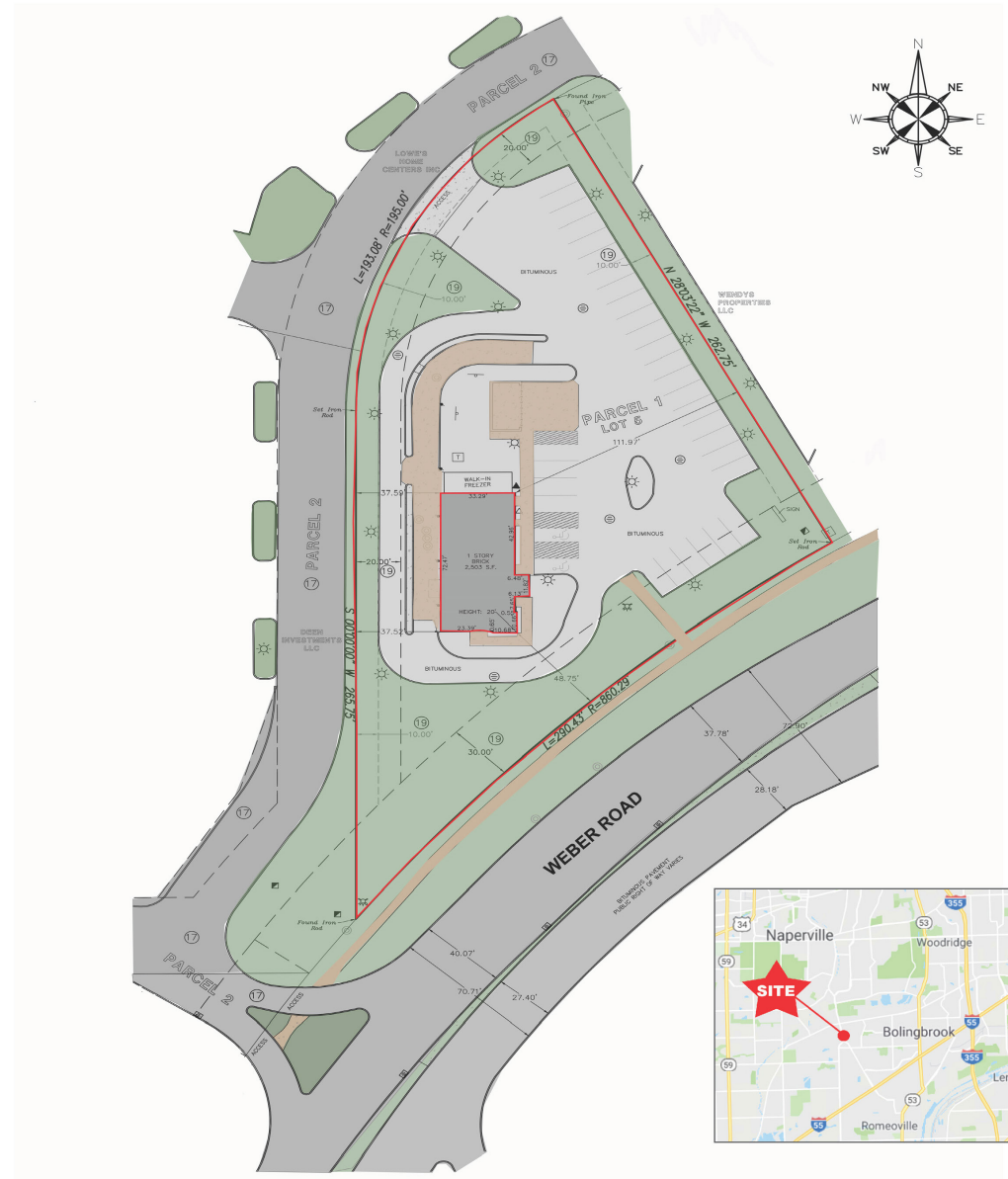
SITE SUMMARY

- 31 Car Parking Spaces
- High-performing fast casual restaurant market
- 65,000 employees within 10-minute drive
- Draw high-income customers from Bolingbrook and Naperville

AREA RETAILERS



POPULATION DENSITY	10,997	1 Mile
	82,192	3 Mile
	211,066	5 Mile
DAYTIME EMPLOYMENT	3,801	1 Mile
	25,583	3 Mile
	60,980	5 Mile
AVERAGE HH INCOME	\$116,740	1 Mile
	\$134,256	3 Mile
	\$131,329	5 Mile



RETAIL SPACE AVAILABLE
227 S. WEBER STREET
 Bolingbrook, IL



CONTACT

Matt Cavanagh
 matt@arcgrp.com
 (630) 908-5694

© 2019 ARC Real Estate. All information is from sources believed reliable, not independently verified, and thus subject to errors, omissions, and modifications such as price, listing, square footage, rates and commissions. All information, estimates and projections subject to change, market assumptions, unknown facts and conditions, and future potentialities. ARC Real Estate makes no express or implied representations or warranties, as facts and results may vary materially from all information, estimates and projections. All renderings presented are conceptual.

