

WR WILBURTON RIDGE

BUILDING C



**CONVENIENTLY
LOCATED CLOSE
TO DOWNTOWN
BELLEVUE**

**900 - 2,393 RSF
AVAILABLE FOR
LEASE**

**MARKET READY
SPACES AVAILABLE**

345 118TH AVE SE
BELLEVUE, WA 98005

BRODERICK
• GROUP •



WILBURTON RIDGE

BUILDING C



**DOUBLE-GLASS DOOR
ENTRANCE TO SUITE 120**



NEWLY IMPROVED LOBBY

BUILDING FEATURES

- + 8,847 RSF, Two Story Building
- + 900 – 2,393 RSF Available for Lease
- + Asking Rate: \$39.00-\$41.00 / Full Service
- + Newly improved market ready suites available
- + Common area and restroom renovations recently completed
- + Strategic and convenient Wilburton location right outside of Downtown Bellevue

COLIN TANIGAWA
425.274.4283

tanigawa@broderickgroup.com



The information contained herein has been given to us by the owner or sources which we deem reliable. We have no reason to doubt its accuracy, but we do not guarantee it. Prospective tenants should carefully verify all information contained herein.



WILBURTON
RIDGE

BUILDING C

COLIN TANIGAWA
425.274.4283

tanigawa@broderickgroup.com

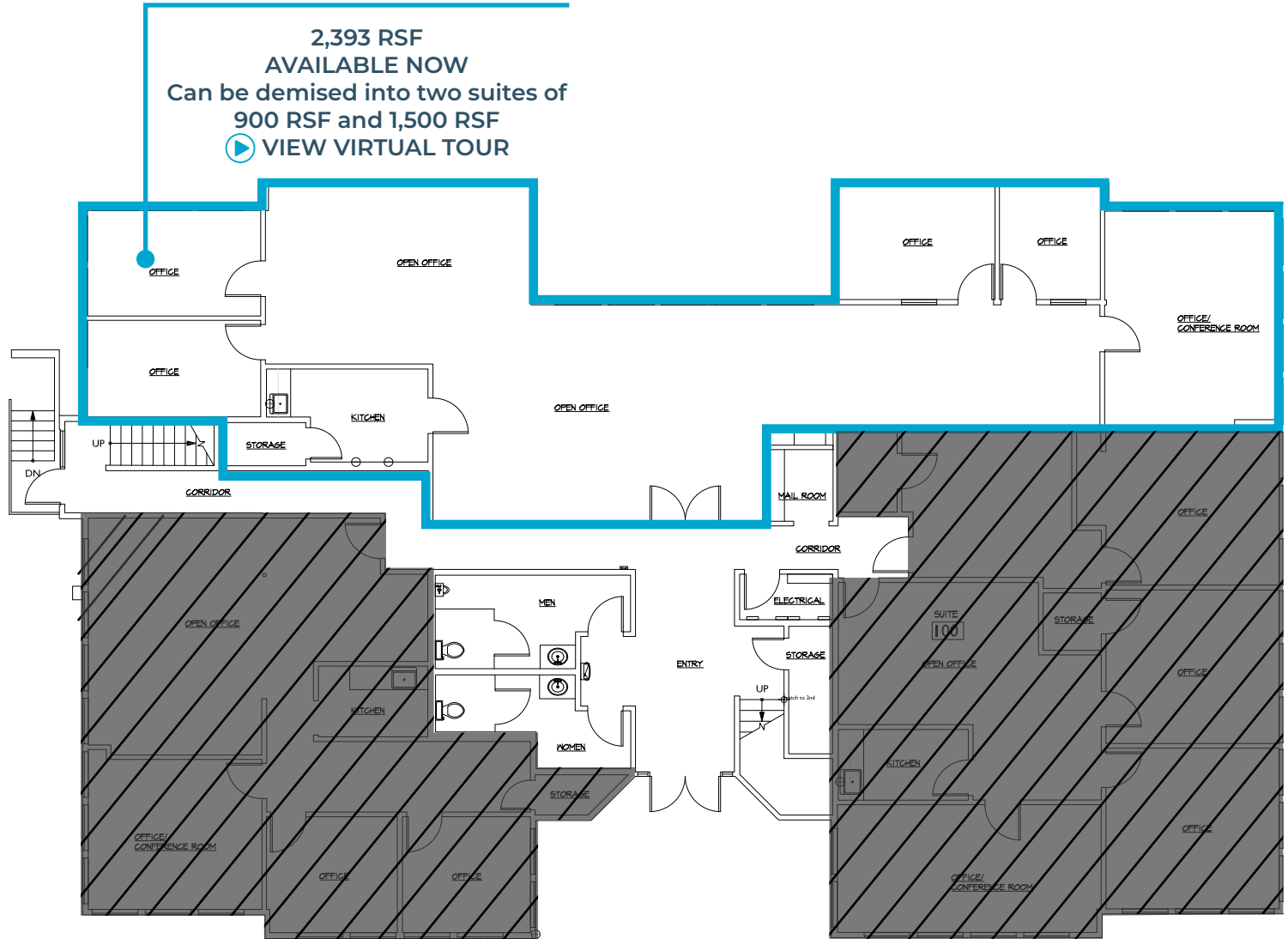


VACANT - AVAILABLE NOW

FLOOR 1

SUITE 120

2,393 RSF
AVAILABLE NOW
Can be demised into two suites of
900 RSF and 1,500 RSF
▶ VIEW VIRTUAL TOUR





WILBURTON
RIDGE

BUILDING C

COLIN TANIGAWA
425.274.4283

tanigawa@broderickgroup.com



VACANT - AVAILABLE NOW

FLOOR 1

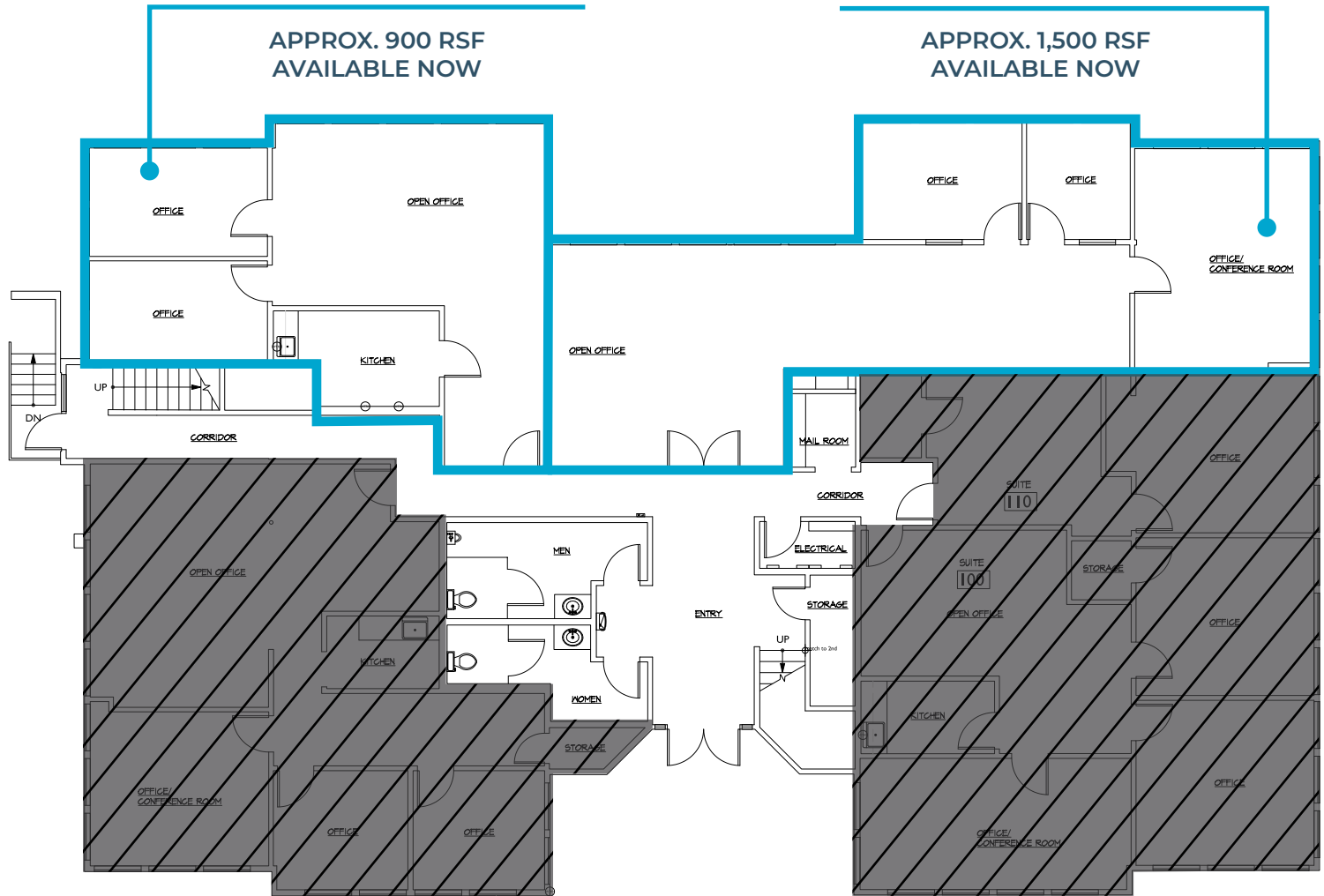
SUITE 120 DEMISING PLAN

SUITE 120 A

APPROX. 900 RSF
AVAILABLE NOW

SUITE 120 B

APPROX. 1,500 RSF
AVAILABLE NOW



LOCATION

345 118TH AVE SE | BELLEVUE, WA 98005



**DOWNTOWN
BELLEVUE**

FUTURE BELLEVUE DOWNTOWN
LIGHT RAIL STATION



FUTURE EAST MAIN
LIGHT RAIL STATION



FUTURE WILBURTON
LIGHT RAIL STATION



BELLEVUE
BOTANICAL GARDEN

WR
WILBURTON
RIDGE

BUILDING C

AMENITIES

1. Residence Inn by Marriott Seattle
2. Bellevue Club
3. Solarium
4. Hilton Bellevue
5. Copper Kettle Coffee Bar
6. Extended Stay America
7. Hampton Inn & Suite
8. Bellevue PCC Market
9. Chipotle
10. Target
11. Starbucks
12. Kura Sushi
13. Trader Joe's

FUTURE LIGHT RAIL

WR

WILBURTON
RIDGE

BUILDING C

For further information or to schedule a tour please contact:

COLIN TANIGAWA | 425.274.4283 | tanigawa@broderickgroup.com