



North Creek Office Center FOR LEASE

**19119 & 19125 North
Creek Parkway,
Bothell, WA 98011**

**19119 Building:
Suite 110 - 1,112 RSF
Suite 106 - 3,905 RSF
(Suite 106 divisible)**

**19125 Building:
Suite 208 - 1,813 RSF
Suite 203 - 3,564 RSF**

\$17.50/SF, NNN

SUHRCO manages a diverse portfolio of commercial and multifamily residential properties in the Puget Sound region. Established in 1973, the company employs more than 300 experienced professionals dedicated to meeting the management, leasing and brokerage needs of building owners, tenants, and condominium/homeowner association boards and owners.



FEATURES

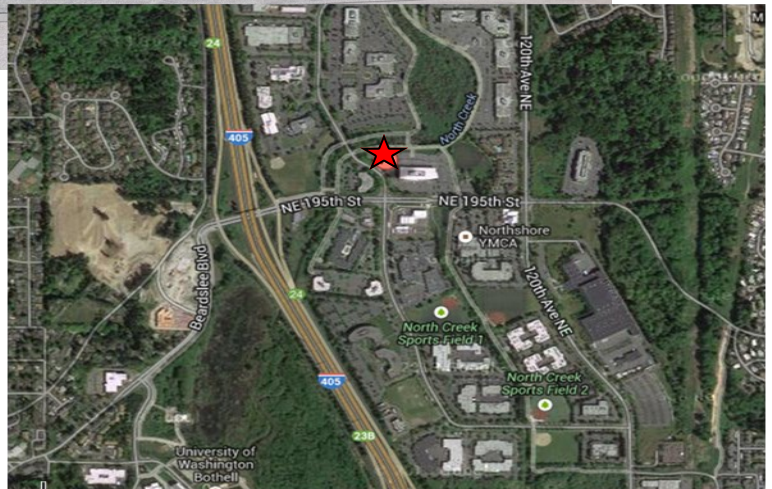
- **LOCATED JUST OFF OF I-405.**
- 4.3 exterior parking stalls per 1,000 square feet.
- Located within the technology corridor.
- Secretarial services available (Premier Business Centers).
- Walking/jogging trails throughout. Shower and changing room provided for tenants. Close to retail services, YMCA, hotels & Group Health Clinic.

Contact:

Peter Townsend, RPA®
Joe O'Donnell

Email: petert@suhrco.com
Email: joeo@suhrco.com

T: (425) 455-1950 F: (425) 462-1943
2010 156th Avenue NE, Suite 100, Bellevue, WA 98007

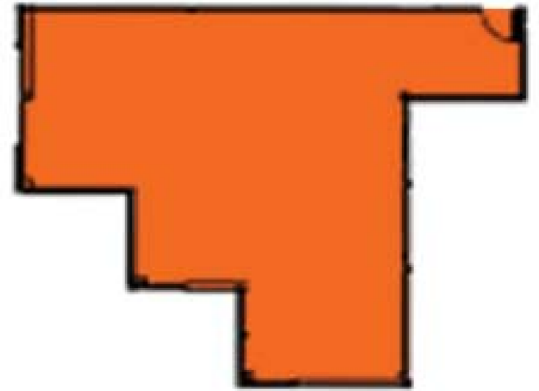


SUHRCO, Inc., AMO®

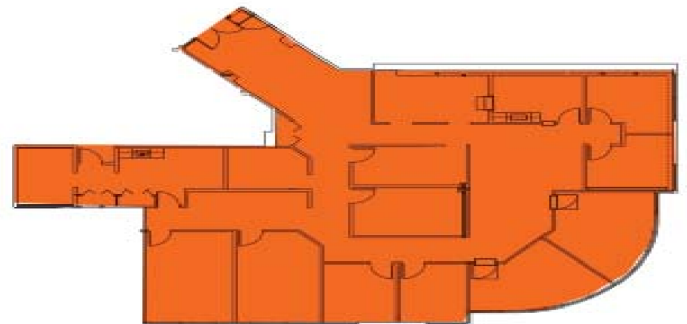


North Creek Office Center Space for Lease

**19119 North Creek Office
First Floor - Suite 110
+/- 1,112 RSF**



**19119 North Creek Office
First Floor - Suite 106
+/- 3,905 RSF**

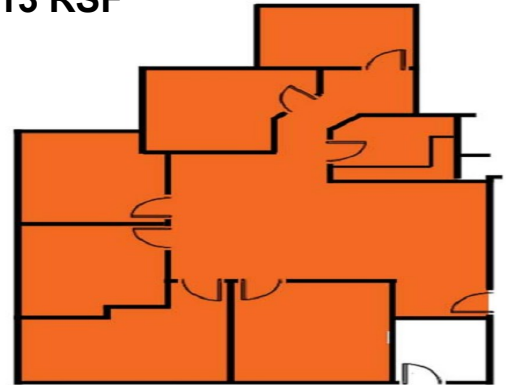




North Creek Office Center Space for Lease

SUITE 208

**19125 North Creek Office
Second Floor - Suite 208
+/- 1,813 RSF**



**19125 North Creek Office
Second Floor - Suite 203
+/- 3,564 RSF**

