

FOR LEASE

10510 SW Laurel Road

Beaverton, Oregon



Property Description

Space Size: Approximately 2,300 SF
Parking: 18 spaces
Zoning: OC - Office Commercial (Washington County)

Terms

Lease Rate: \$12.00/SF NN annually
Landlord pays property taxes
Term: 3 - 5 year term available

Features

- Signage available
- Free standing office building
- Functional floor plan with nine private offices, conference room, storage rooms, and reception area
- Complete HVAC system throughout
- Excellent off-street parking

For additional information, contact:

John Van Zonneveld

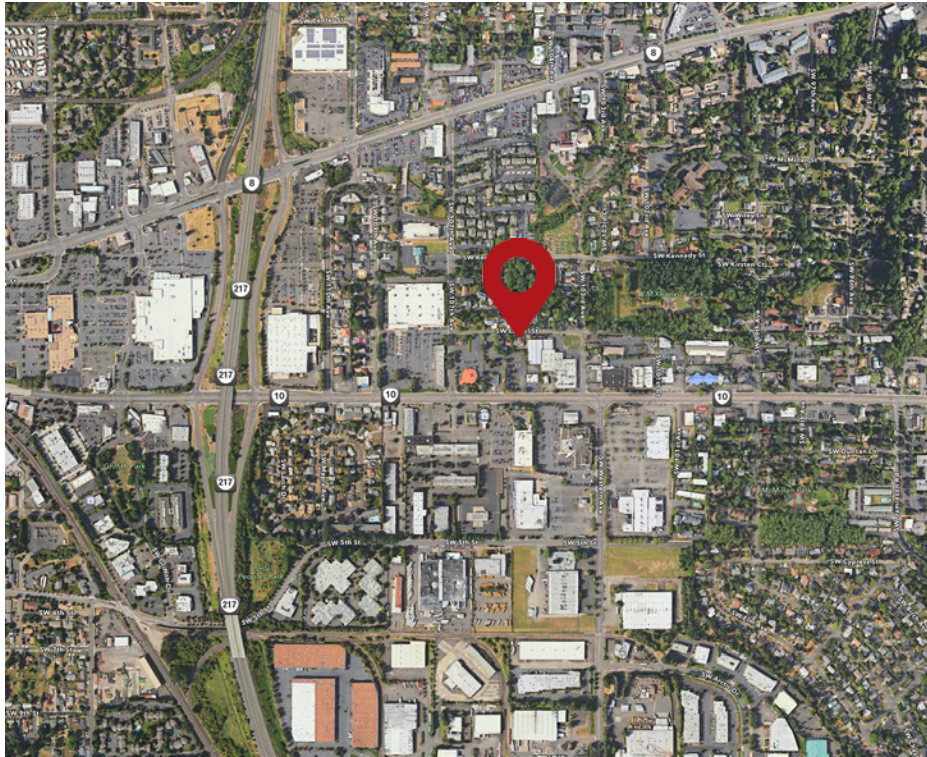
Direct: 503.972.7290

johnv@macadamforbes.com

1800 SW First Avenue, Suite 650, Portland, OR 97201

P 503.227.2500 / www.macadamforbes.com





For additional information, contact:

John Van Zonneveld

Direct: 503.972.7290

johnv@macadamforbes.com

1800 SW First Avenue, Suite 650, Portland, OR 97201

P 503.227.2500 / www.macadamforbes.com

