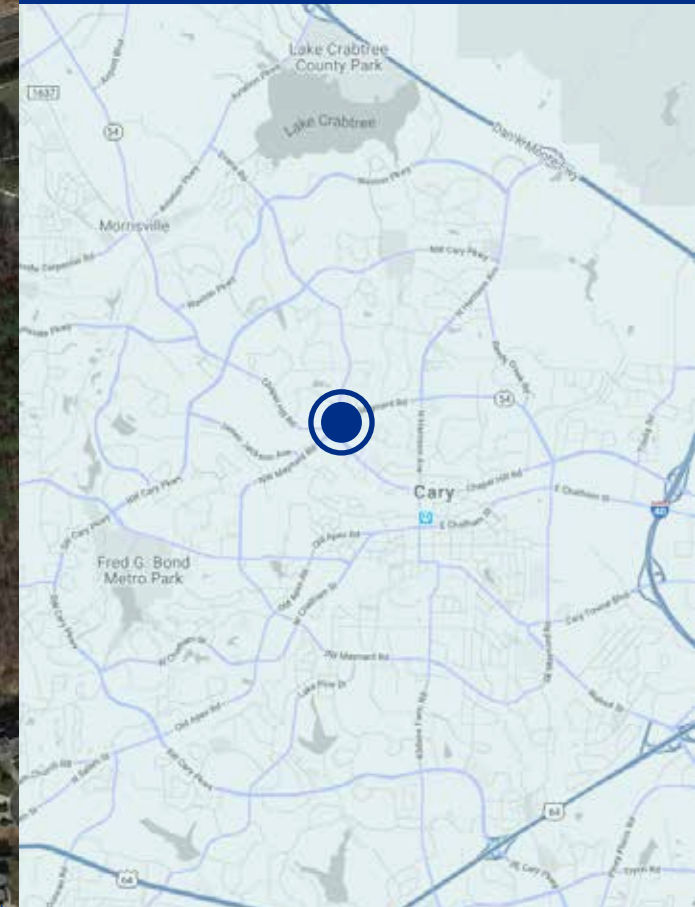


**EVANS ROAD &  
NW MAYNARD ROAD  
CARY, NC 27513**



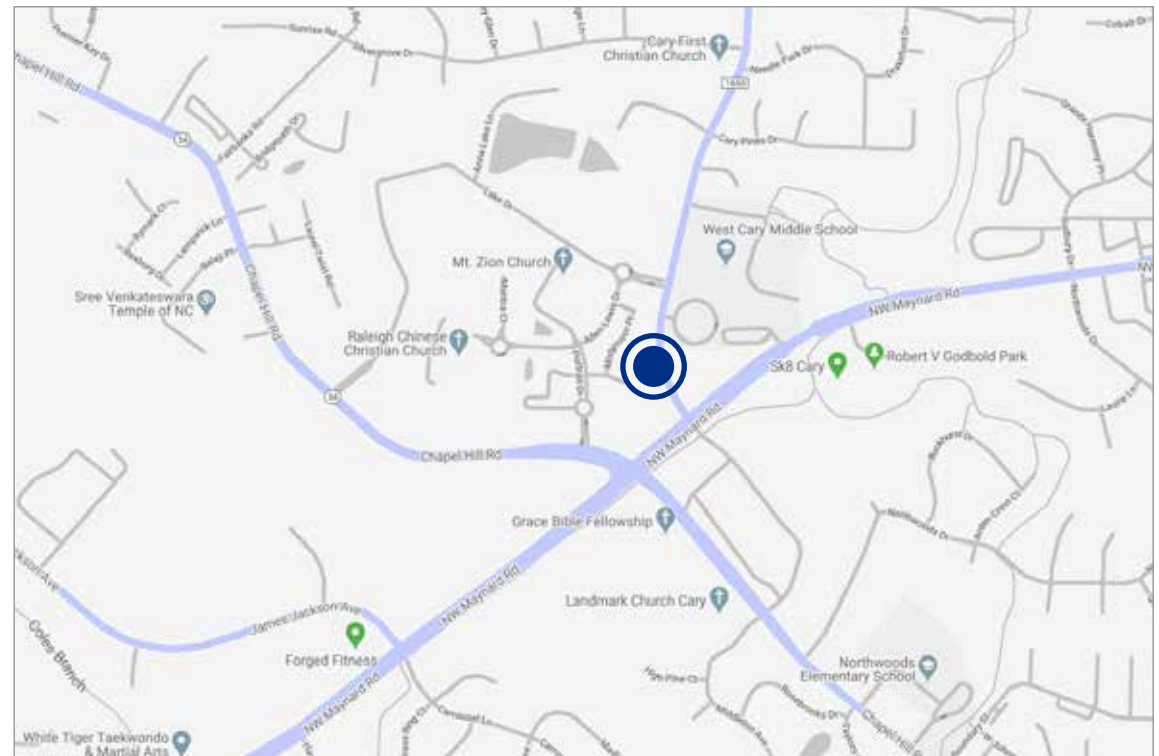
## ABOUT THE PROPERTY

- Two parcels (PIN # 0764065266 - 1.31 acres) and (PIN #0764065655 - 0.87 acres) totaling 2.18 acres
- No blue line streams or wetlands
- Great exposure on Evans Road and NW Maynard Road
- Both properties located in the NW overlay
- Permitted uses include: daycare center, office, retail, and vehicle services
- Public water and sewer on-site
- Power company to relocate power line through property to Evans Road right-of-way in coordination with site plan
- A possible acquisition of the adjacent parcel

**SALES PRICE: \$999,000**

## LOCATION OVERVIEW

- Located just off NC-54, a major retail corridor in the Town of Cary
- Borders Northwoods Crossing, a mixed-use development, to the west
- West Cary Middle School is located across Evans Road from the property
- Both Properties are located in the Northwood West Overlay, its purpose is to enable development of commercial, office, residential, recreational, civic, and cultural uses



**MIKE KEEN**

mkeen@trademarkproperties.com  
919.795.1944 direct

**CLAIBORNE LORD**

clord@trademarkproperties.com  
919.645.1426 direct

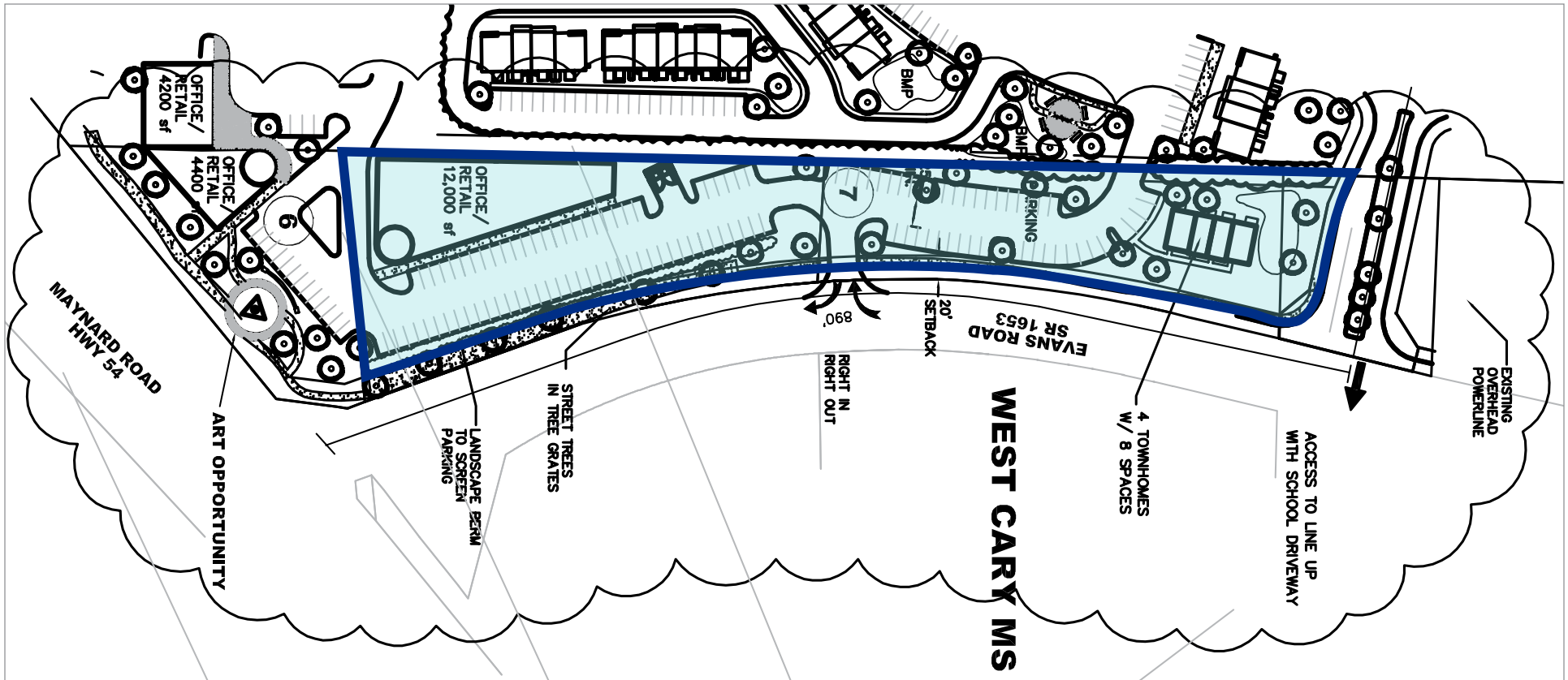
1001 Wade Avenue, Suite 300, Raleigh, NC 27605 • trademarkproperties.com • 919.782.5552

The information contained herein was obtained from sources believed reliable; however, TradeMark Properties makes no guarantees, warranties, or representations as to the completeness or accuracy thereof. The presentation of this property is submitted subject to errors, omissions, changes of price or conditions prior to sale or lease, or withdrawal without notice.





**ALTERNATE CONCEPTUAL SITE PLAN**

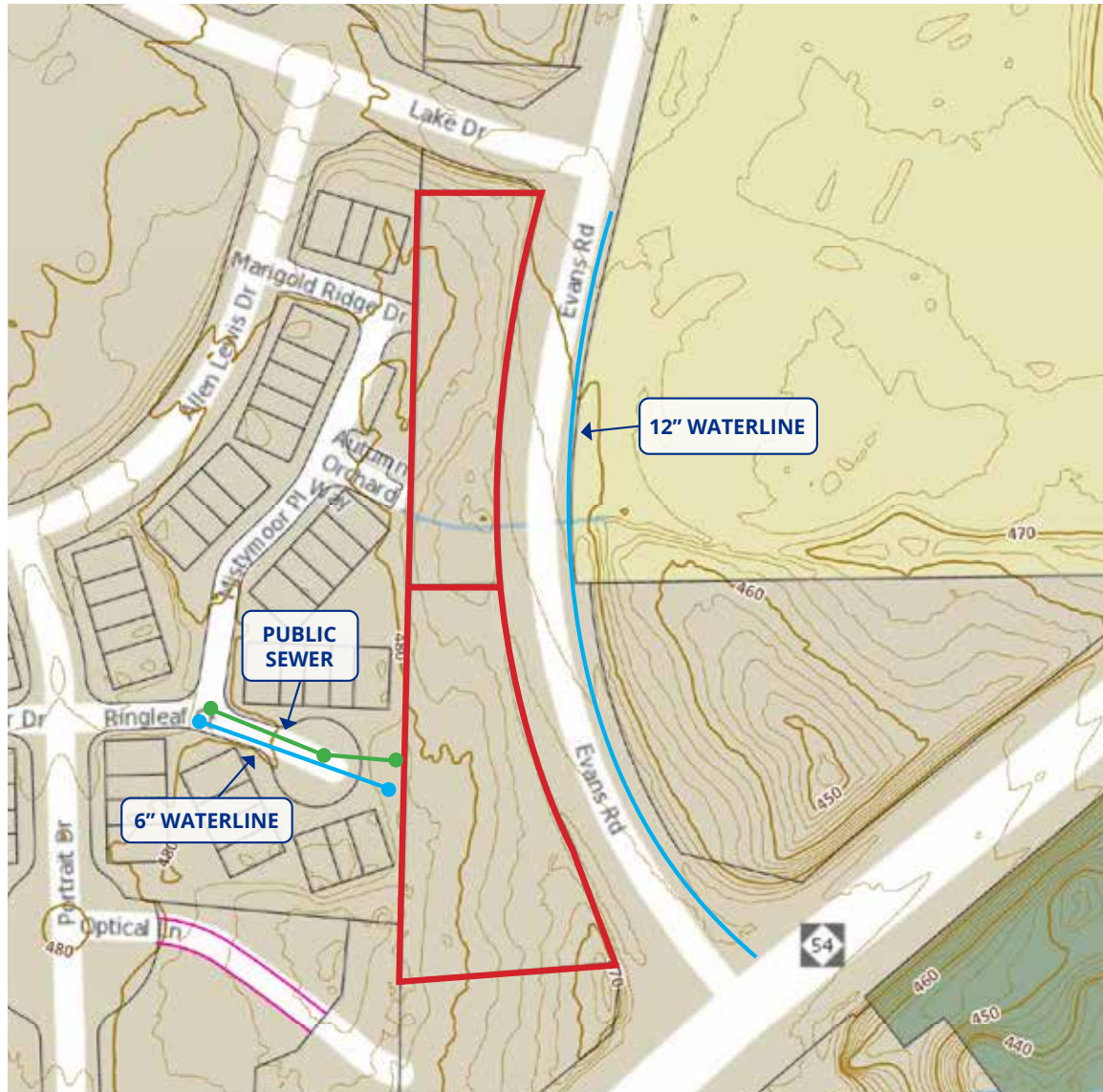


ENVIRONMENTAL MAP





**ENVIRONMENTAL MAP**





**U.S. Fish and Wildlife Service**  
**National Wetlands Inventory**

Wetlands



December 13, 2019

**Wetlands**

- |  |   |  |
|--|---|--|
|  Estuarine and Marine Deepwater |  Freshwater Emergent Wetland       |  Lake     |
|  Estuarine and Marine Wetland   |  Freshwater Forested/Shrub Wetland |  Other    |
|  |  Freshwater Pond                   |  Riverine |

This map is for general reference only. The US Fish and Wildlife Service is not responsible for the accuracy or currentness of the base data shown on this map. All wetlands related data should be used in accordance with the layer metadata found on the Wetlands Mapper web site.

National Wetlands Inventory (NWI)  
This page was produced by the NWI mapper

**MIKE KEEN**

mkeen@trademarkproperties.com

919.795.1944 direct

**CLAIBORNE LORD**

clord@trademarkproperties.com

919.645.1426 direct

1001 Wade Avenue, Suite 300, Raleigh, NC 27605 • trademarkproperties.com • 919.782.5552

The information contained herein was obtained from sources believed reliable; however, TradeMark Properties makes no guarantees, warranties, or representations as to the completeness or accuracy thereof. The presentation of this property is submitted subject to errors, omissions, changes of price or conditions prior to sale or lease, or withdrawal without notice.