

751 SIXTH AVENUE



SPACE DETAILS

LOCATION

Southwest corner of West 25th Street

SPACE

Ground Floor	11,000 SF*
Lower Level	1,500 SF*
Total	12,500 SF*

*Divisible

TERM

Long term

POSSESSION

November 15, 2019

APPROXIMATE FRONTAGE

202 FT of wraparound

SITE STATUS

Currently Spirit Halloween temp store

NEIGHBORS

CVS pharmacy, Starbucks, Chase Bank, Best Buy, Bluemercury, Fairway Market, Verizon Wireless and Citibank

COMMENTS

Rare corner opportunity

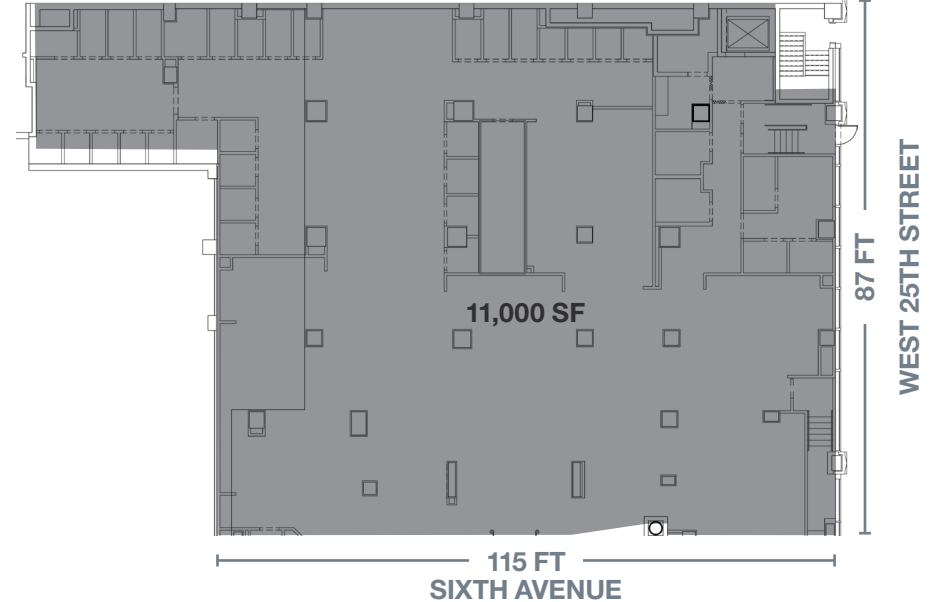
Logical divisions considered

True seven-day-a-week market with a strong residential and office population

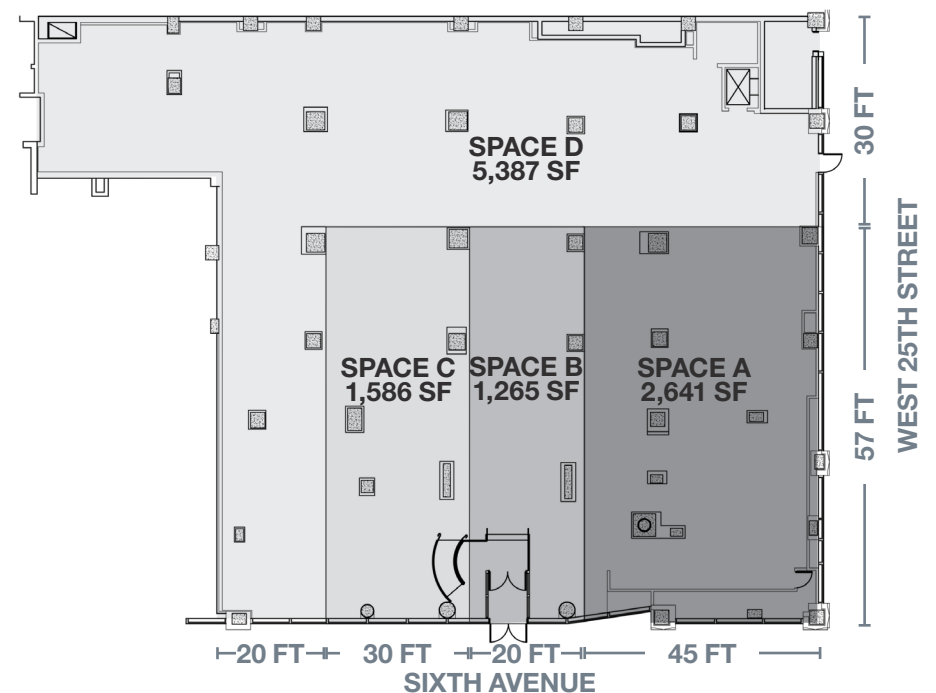
Steps from the **F** **M** subway lines at the 23rd Street station with an annual ridership of 8,989,195

Adjacent to The Lam Group's new 40-floor, 330-room Marriot Renaissance Hotel at 112 West 25th Street and around the corner from Lam Generation's new 38-story, 360-room hotel at 113 West 24th Street

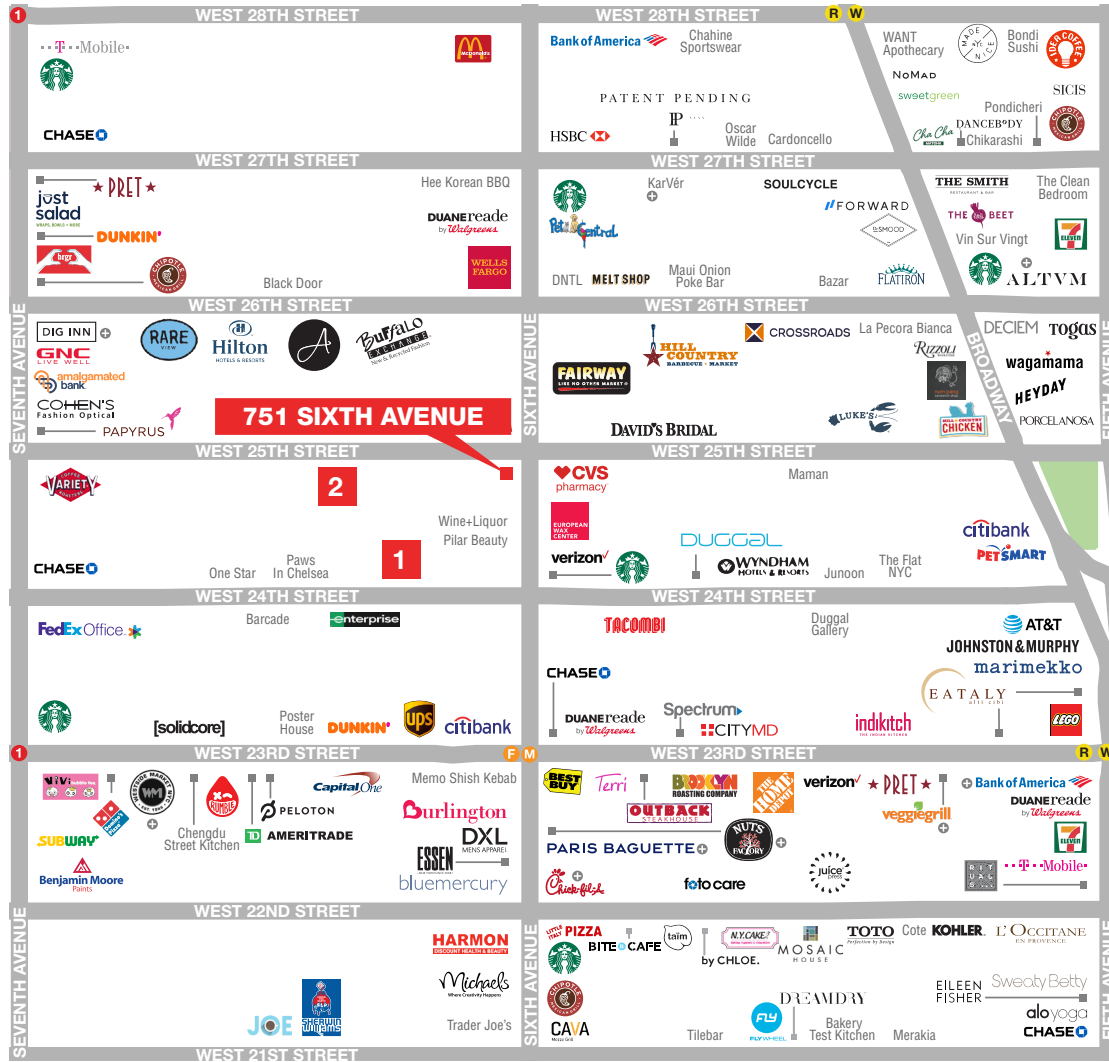
GROUND FLOOR



DIVISION OPTIONS



AREA RETAIL



➕ COMING SOON

NEW DEVELOPMENTS

- 1 THE LAM GROUP'S - MARRIOTT RENAISSANCE HOTEL**
112 WEST 25TH STREET
Hotel - 40 stories, 330 keys
- 2 LAM GENERATION'S HOTEL**
113 WEST 24TH STREET
Hotel - 38 stories, 360 keys

CONTACT EXCLUSIVE AGENTS

THOMAS CHOLNOKY
212.916.3373
tcholnoky@rkf.com

BARRY FISHBACH
212.331.0115
bfishbach@rkf.com

MICHAEL PASTER
212.351.9345
mpaster@rkf.com