

23936 INDUSTRIAL PARK DRIVE
FARMINGTON HILLS, MICHIGAN

HI-TECH FOR SALE OR LEASE
9,305-21,932 Square Feet Available



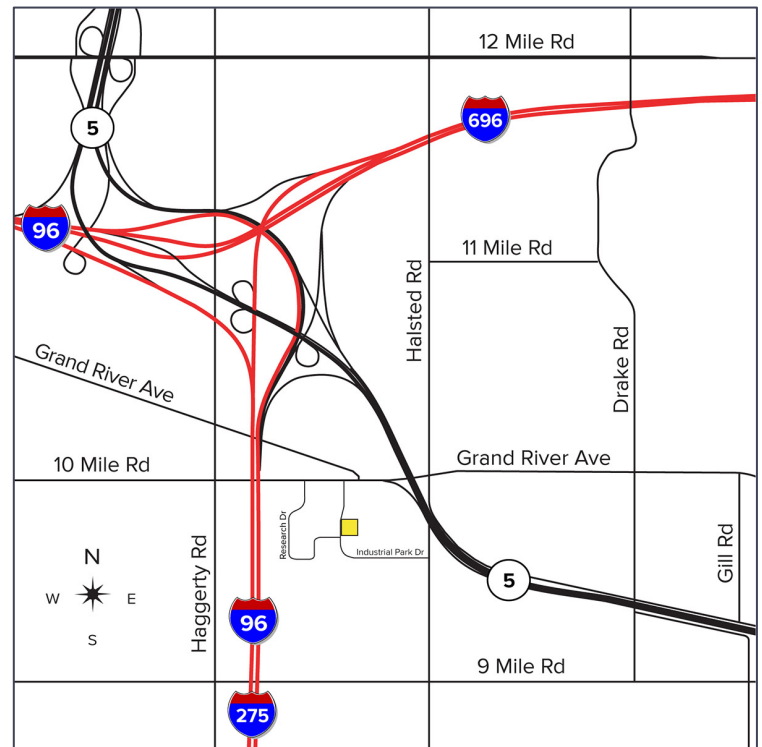
**SIGNATURE
ASSOCIATES**
KNOW SIGNATURE | KNOW RESULTS

FREWAY INDUSTRIAL PARK



PROPERTY FEATURES

- For Sale: 21,932 square feet available
- For Lease: 9,305 sq. ft. with dock & overhead door
- Approximately 16,000 square feet of office space; can be demoed back to 2,715 square feet
- Zoned Light Industrial
- Close proximity to major freeways
- (1) 12x14 grade level door, (1) truckwell
- 48 parking spaces
- 14'-16' clear height
- Heavy power, 480 volts, 3-phase, 2,000 amps
- Ideal for many uses including manufacturing, engineering, and R&D
- Sale Price: \$1,800,000.00 (\$82.07/sq. ft.)
- Lease Rate: \$10.00/sq. ft. Gross + Utilities



For more information, please contact:

CHRISTOPHER CALVANO
(248) 359 0610
ccalvano@signatureassociates.com

CHRISTOPHER M. D'ANGELO
(248) 948 0109
cdangelo@signatureassociates.com

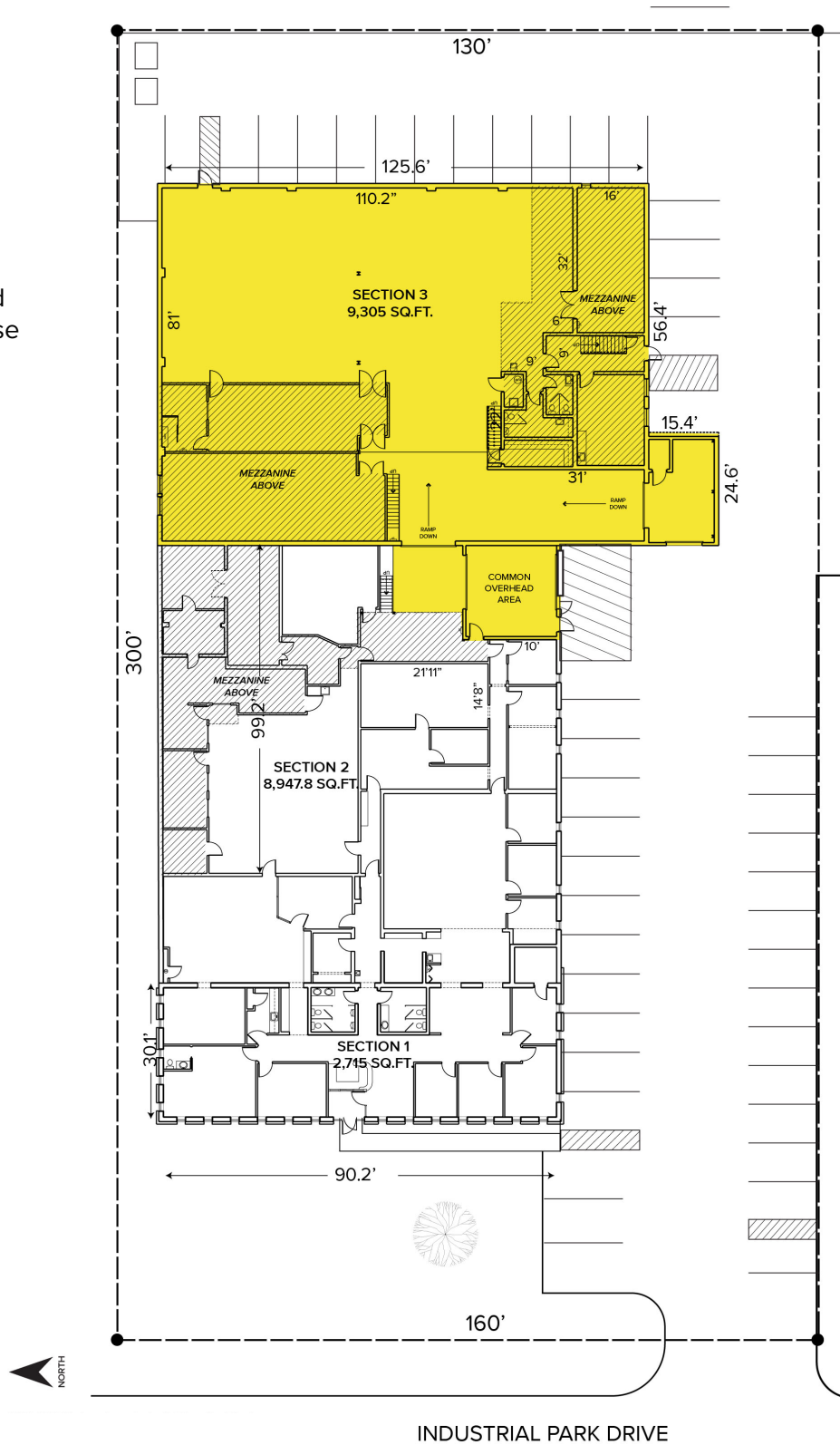
SIGNATURE ASSOCIATES
One Towne Square, Suite 1200
Southfield, MI 48076
www.signatureassociates.com

23936 Industrial Park Drive – Farmington Hills, Mich. Hi-Tech For Sale or Lease

9,305-21,932
Square Feet
AVAILABLE

Site Plan

*Highlighted
area for lease



For more information, please contact:

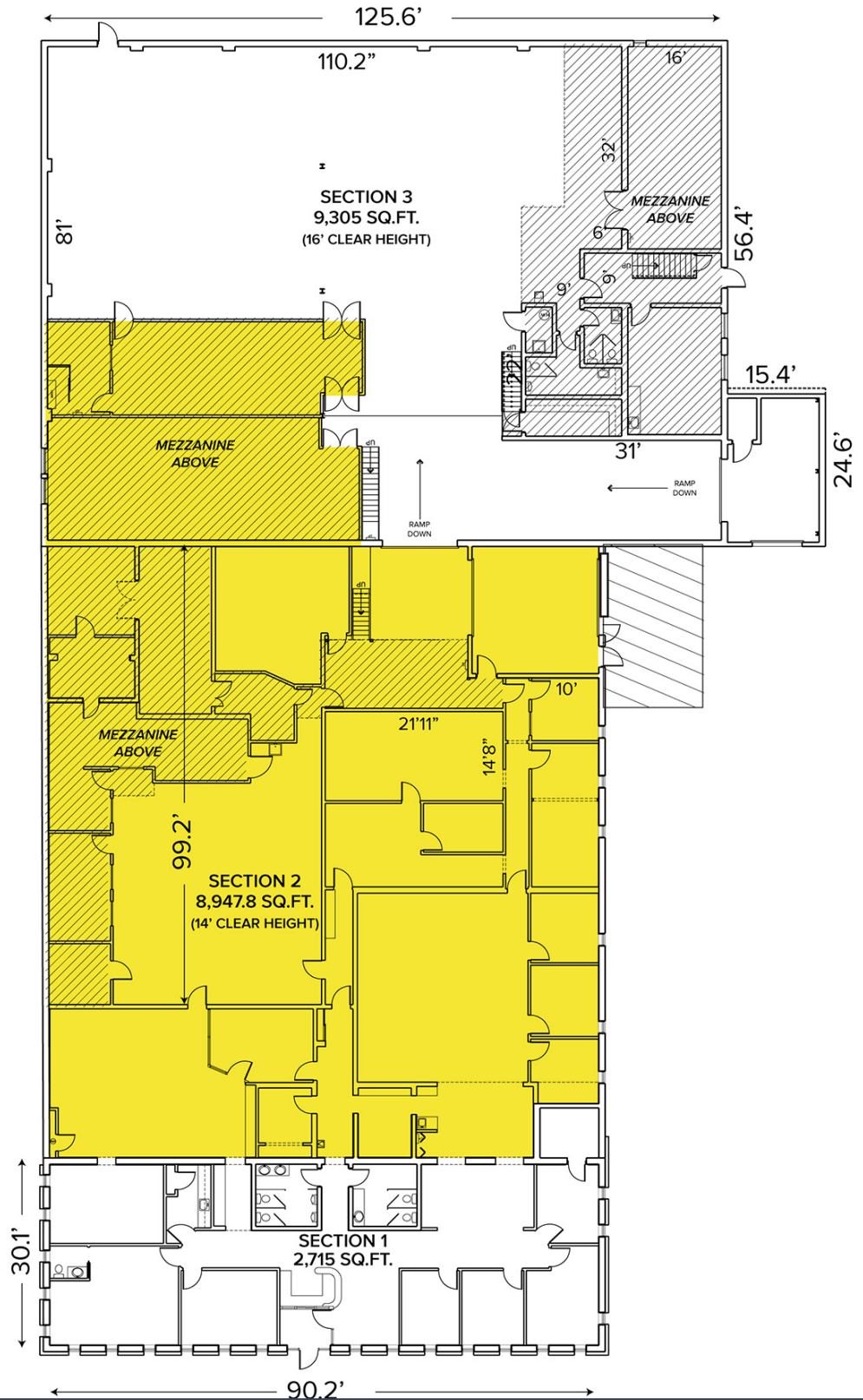
CHRISTOPHER CALVANO
(248) 359 0610
ccalvano@signatureassociates.com

CHRISTOPHER M. D'ANGELO
(248) 948 0109
cdangelo@signatureassociates.com

SIGNATURE ASSOCIATES
One Towne Square, Suite 1200
Southfield, MI 48076
www.signatureassociates.com

Floor Plan

* HIGHLIGHTED AREA
 CAN BE DEMOLISHED
 UP TO THE DECK FOR
 MORE SHOP SPACE



For more information, please contact:

CHRISTOPHER CALVANO
 (248) 359 0610
 ccalvano@signatureassociates.com

CHRISTOPHER M. D'ANGELO
 (248) 948 0109
 cdangelo@signatureassociates.com

SIGNATURE ASSOCIATES
 One Towne Square, Suite 1200
 Southfield, MI 48076
 www.signatureassociates.com

23936 Industrial Park Drive – Farmington Hills, Mich. Hi-Tech For Sale or Lease

9,305-21,932
Square Feet
AVAILABLE

Aerial



For more information, please contact:

CHRISTOPHER CALVANO
(248) 359 0610
ccalvano@signatureassociates.com

CHRISTOPHER M. D'ANGELO
(248) 948 0109
cdangelo@signatureassociates.com

SIGNATURE ASSOCIATES
One Towne Square, Suite 1200
Southfield, MI 48076
www.signatureassociates.com