



**± 40.8 Acres: Mixed-Use Opportunity**

For more information, contact:

**LAURA HARMON**  
Associate  
864 704 1363  
[laura.harmon@thalhimer.com](mailto:laura.harmon@thalhimer.com)

**KYLE BERDUGO**  
Associate  
864 704 1366  
[kyle.berdugo@thalhimer.com](mailto:kyle.berdugo@thalhimer.com)

**GLENN HOLLIS**  
Associate  
864 704 1345  
[glenn.hollis@thalhimer.com](mailto:glenn.hollis@thalhimer.com)

Wells Fargo Center  
15 South Main Street, Suite 502  
Greenville, SC 29601  
[www.thalhimer.com](http://www.thalhimer.com)



**Property Features**

- Great opportunity for mixed-use residential
- Within Lake Community: homes starting from the \$180's
- Less than 12 miles to Greenville CBD and the BMW Manufacturing Campus
- Less than 7 miles to Greer CBD
- +/-12 miles to GSP International Airport
- In Greenville County
- Zoned: PD-R

**Demographics**

	<b>5 Miles</b>
Population	47,420
No. of Households	18,337
Avg. HH Income	\$52,327
Daytime Population	10,609

**Road/Highway/Interstate +/- Miles**

Highway 290	2
SC Highway 29	5
SC Interstate 85	12

For more information, contact:

**LAURA HARMON**  
Associate  
864 704 1363  
laura.harmon@thalhimer.com

**KYLE BERDUGO**  
Associate  
864 704 1366  
kyle.berdugo@thalhimer.com

**GLENN HOLLIS**  
Associate  
864 704 1345  
glenn.hollis@thalhimer.com

Wells Fargo Center  
15 South Main Street, Suite 502  
Greenville, SC 29601  
www.thalhimer.com

PRELIMINARY DRAWING



For more information, contact:

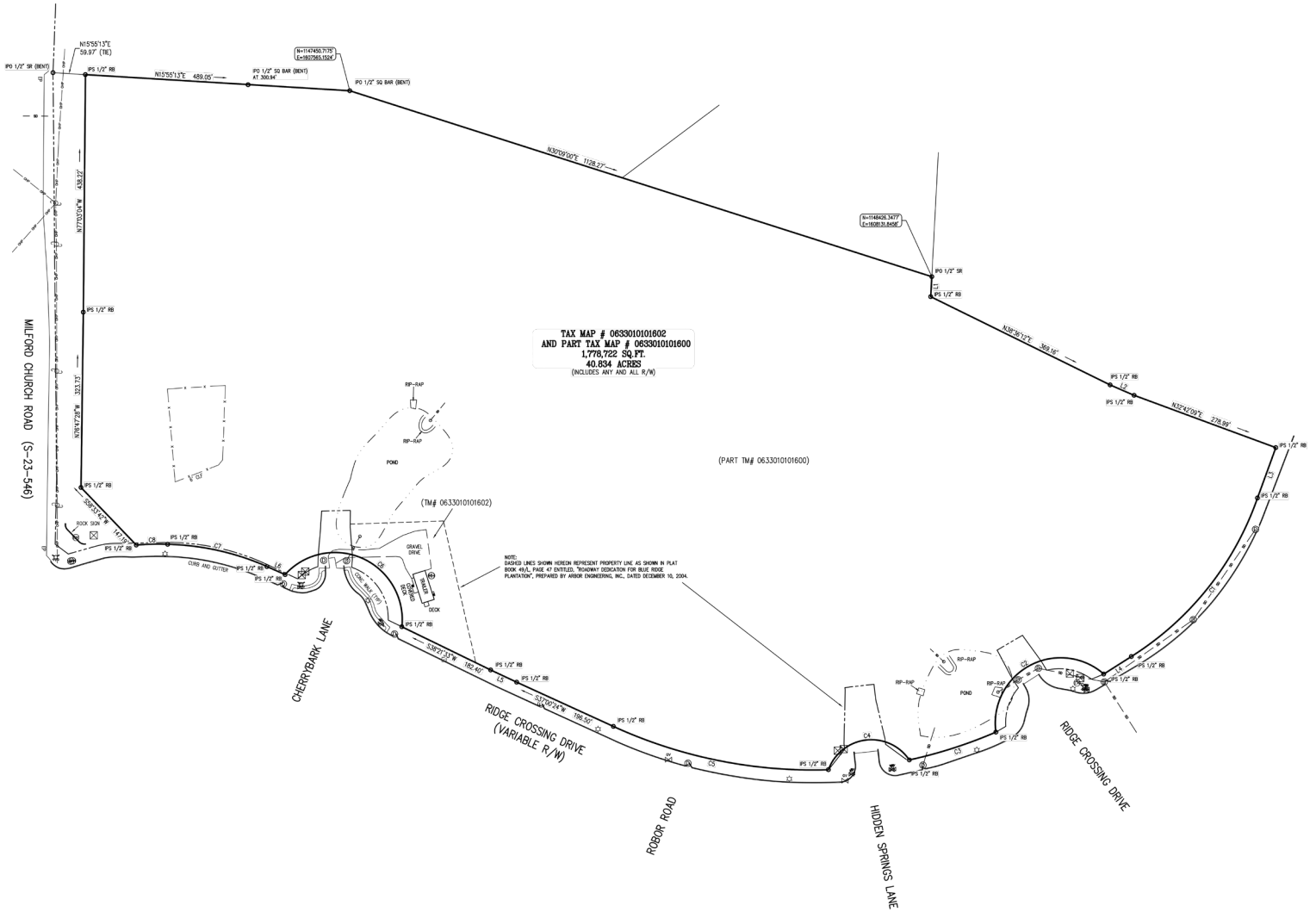
**LAURA HARMON**  
 Associate  
 864 704 1363  
[laura.harmon@thalhimer.com](mailto:laura.harmon@thalhimer.com)

**KYLE BERDUGO**  
 Associate  
 864 704 1366  
[kyle.berdugo@thalhimer.com](mailto:kyle.berdugo@thalhimer.com)

**GLENN HOLLIS**  
 Associate  
 864 704 1345  
[glenn.hollis@thalhimer.com](mailto:glenn.hollis@thalhimer.com)

Wells Fargo Center  
 15 South Main Street, Suite 502  
 Greenville, SC 29601  
[www.thalhimer.com](http://www.thalhimer.com)

**PLAT**



For more information, contact:

**LAURA HARMON**  
 Associate  
 864 704 1363  
 laura.harmon@thalhimer.com

**KYLE BERDUGO**  
 Associate  
 864 704 1366  
 kyle.berdugo@thalhimer.com

**GLENN HOLLIS**  
 Associate  
 864 704 1345  
 glenn.hollis@thalhimer.com

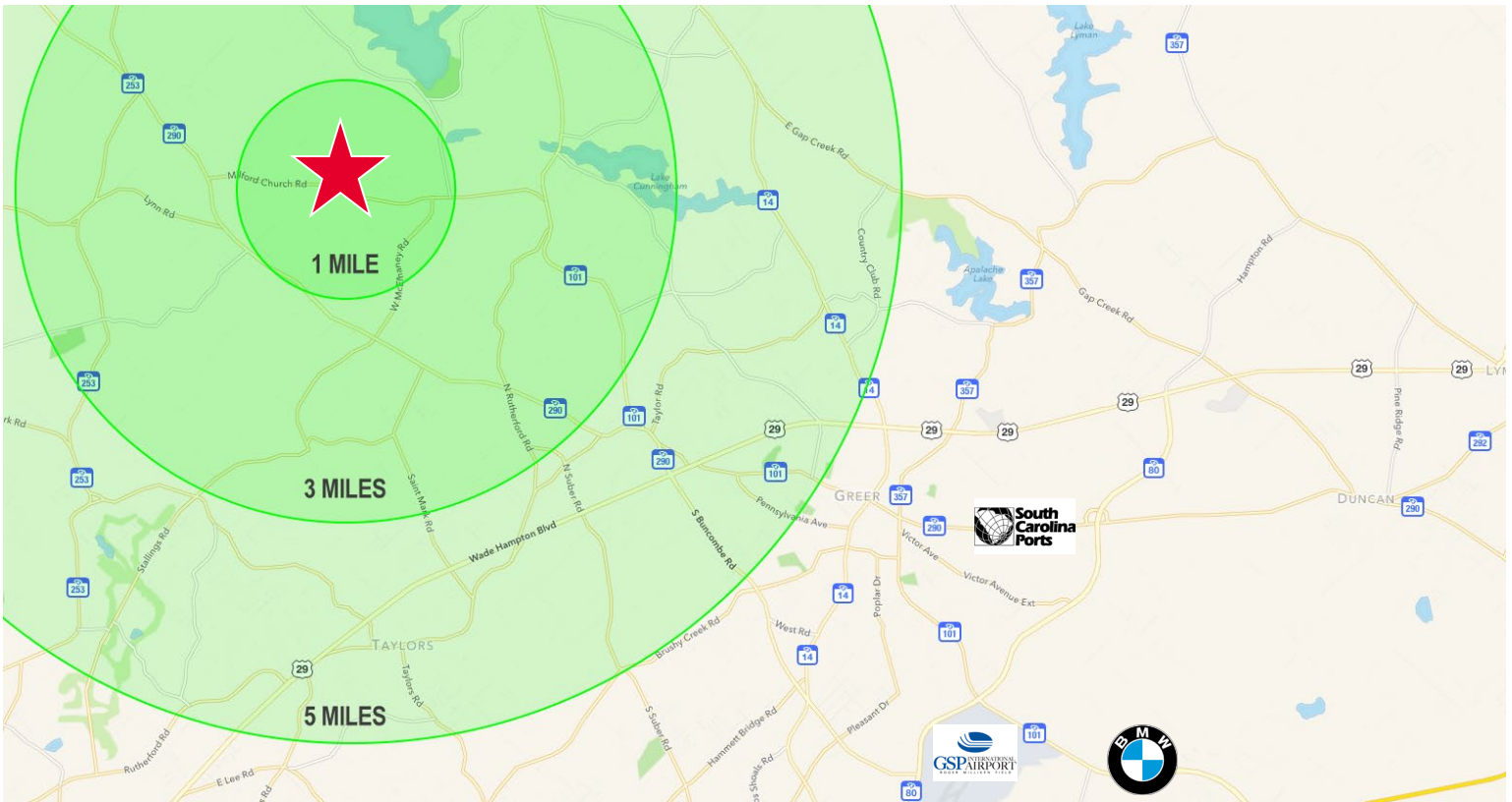
Wells Fargo Center  
 15 South Main Street, Suite 502  
 Greenville, SC 29601  
 www.thalhimer.com

**Nearby Retailers (Within 10 Miles)**



**Specifications**

Total Size	+/- 40.834 Acres
Timing	Available immediately
Price Per Acre	\$35,000
Location	Taylors (within Greenville County)



For more information, contact:

**LAURA HARMON**  
 Associate  
 864 704 1363  
[laura.harmon@thalhimer.com](mailto:laura.harmon@thalhimer.com)

**KYLE BERDUGO**  
 Associate  
 864 704 1366  
[kyle.berdugo@thalhimer.com](mailto:kyle.berdugo@thalhimer.com)

**GLENN HOLLIS**  
 Associate  
 864 704 1345  
[glenn.hollis@thalhimer.com](mailto:glenn.hollis@thalhimer.com)

Wells Fargo Center  
 15 South Main Street, Suite 502  
 Greenville, SC 29601  
[www.thalhimer.com](http://www.thalhimer.com)