



±2,826 SF INDUSTRIAL SPACE FOR LEASE

PROPERTY HIGHLIGHTS:

- 45% Improved: 3 Privates, 3 Restrooms & Reception/Bullpen Area
- 200 Amps, 208 Volt, 3 Phase
- 12' x 14' Roll-Up Door (Rear Loader)
- ±14' Clear Height in Warehouse
- ±2/1000 Parking
- Frontage on Parrott Street & Adjacent to Costco

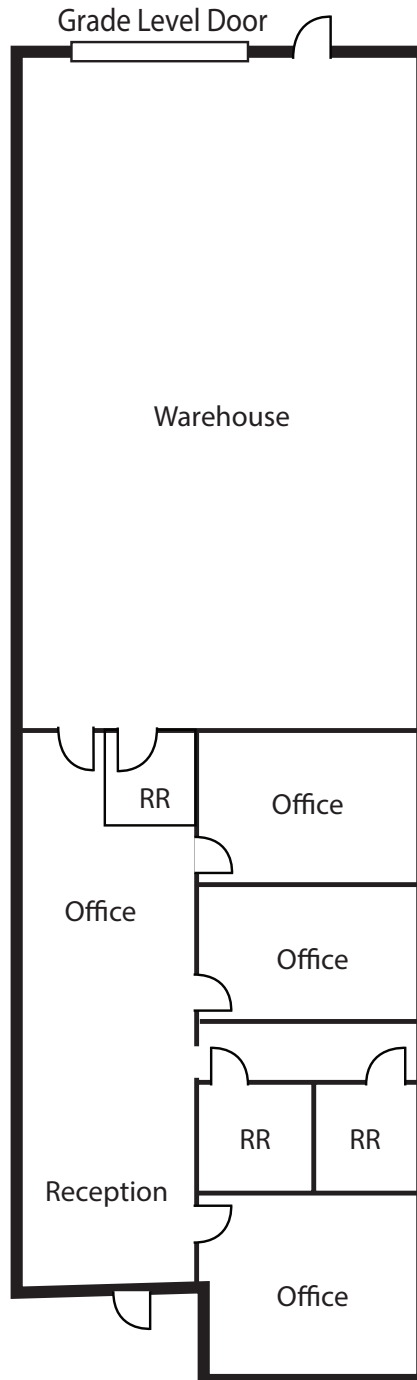


Mike Baker
Director
+1 408 615 3406
mike.baker@cushwake.com
LIC #01884037

Tom Snider
Executive Managing Director
+1 408 436 3639
tom.snider@cushwake.com
LIC #00847073

300 Santana Row, Fifth Floor
San Jose, CA 95128
main +1 408 615 3400
fax +1 408 615 3444
cushmanwakefield.com

FLOOR PLAN



Mike Baker
Director
+1 408 615 3406
mike.baker@cushwake.com
LIC #01884037

Tom Snider
Executive Managing Director
+1 408 436 3639
tom.snider@cushwake.com
LIC #00847073

300 Santana Row, Fifth Floor
San Jose, CA 95128
main +1 408 615 3400
fax +1 408 615 3444
cushmanwakefield.com