

# 1 REMSEN AVENUE

EMPIRE BOULEVARD

E NEW YORK AVENUE

16,851 VEHICLE / DAY

19,037 VEHICLE / DAY

UTICA AVENUE

16,612 VEHICLE / DAY

REMSSEN AVENUE

SITE

ti STORAGE  
TREASURE ISLAND





# 1 REMSEN AVENUE

## SIZE

Ground Floor

**10,000 SF**

Basement

**600 SF**

## FRONTAGE

200' Wraparound

## COMMENTS

- 24 Parking Spaces
- Dedicated pylon signage
- Former Duane Reade

## CEILING HEIGHT

12'

## DEMOGRAPHIC (1 mile)



Population

**181,606**



Households

**64,809**



Median HH Income

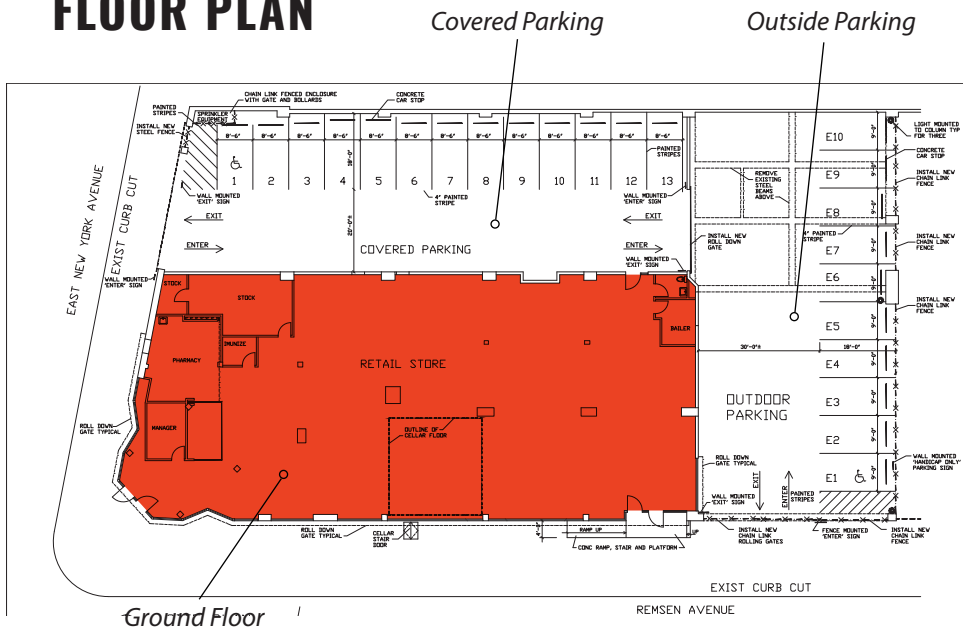
**\$39,097**



Median Home Value

**\$527,588**

## FLOOR PLAN



## DAYTIME EMPLOYEES

1 Mile

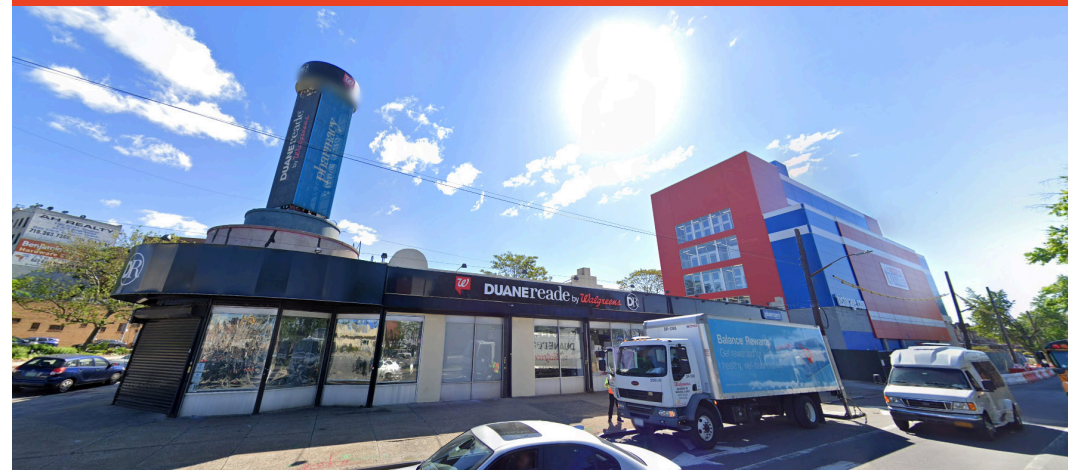
**36,152**

3 Mile

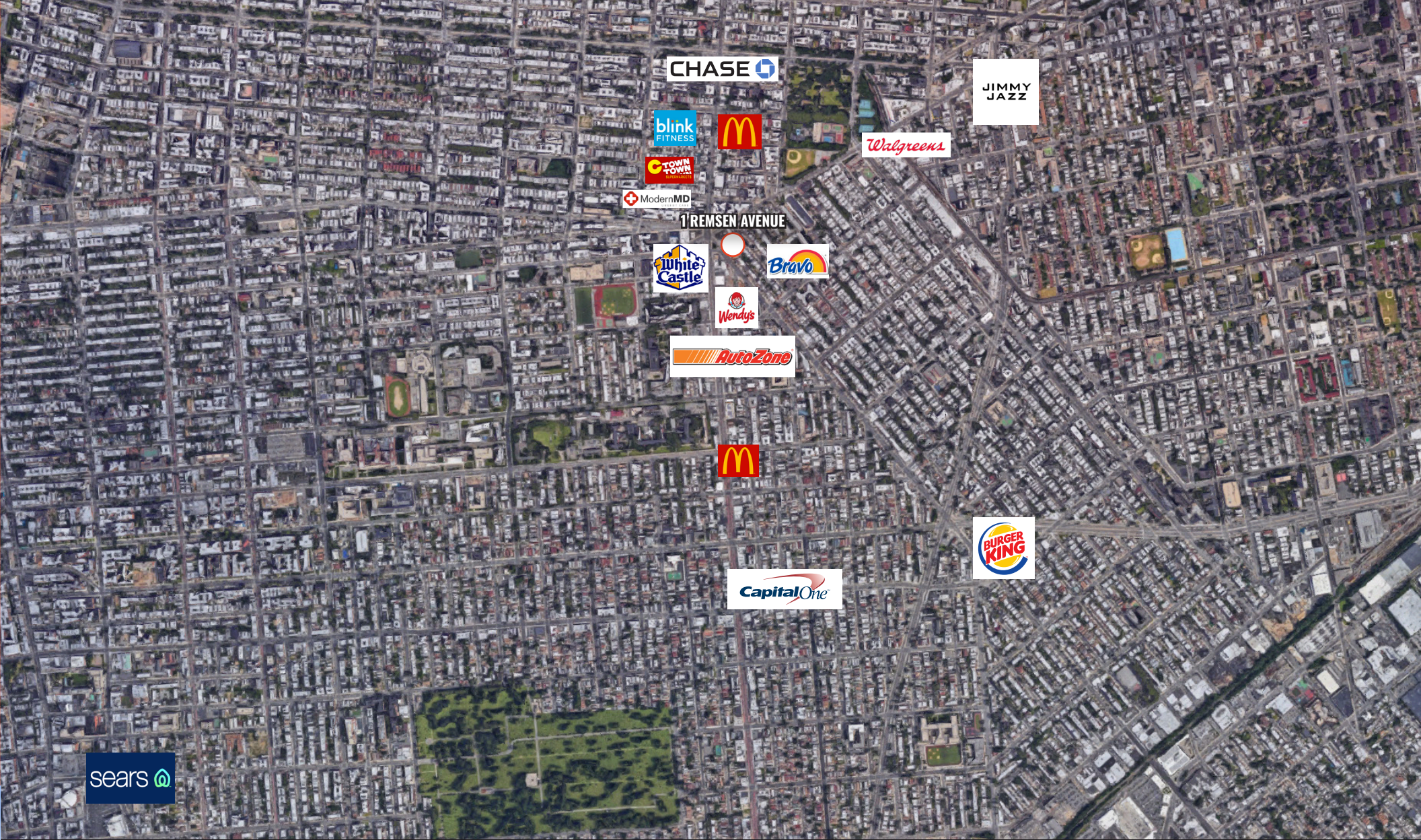
**255,091**

10 mins drive

**268,447**







**KASSIN SABBAGH REALTY**  
1385 Broadway 22<sup>nd</sup> floor  
New York, NY 10018  
212.417.9217  
[www.ksrny.com](http://www.ksrny.com)

**MARC SITT**  
[MSitt@ksrny.com](mailto:MSitt@ksrny.com)  
**646.869.5528**

All information supplied in this marketing presentation and/or flyer is from sources deemed reliable and is furnished subject to errors, omissions, modifications, removal of listings from sale/lease and to any listing conditions.  
Any square footage, dimensions, floor plans and/or technical data set forth are approximations and are subject to further elaboration/confirmaton.