

MEDICAL OFFICE SPACE FOR LEASE

HILLCREST MEDICAL CENTRE



4033 Third Avenue // San Diego, California

Lars Eisenhauer // Lic. 01372911 // +1 760 438 8534 // lars.eisenhauer@cbre.com

Dan Henry // Lic. 02035998 // +1 760 438 8569 // dan.henry@cbre.com

CBRE

FEATURES



AVAILABLE
±831 SF - ±4,118 SF



CLASS "A"
Medical Office Building



WALKING DISTANCE
to Scripps Mercy Hospital



WALKING DISTANCE
Retail Amenities



PARKING
Underground



OTHER SPECIALTIES INCLUDE
ENT | Endoscopy | Lab | Neurology

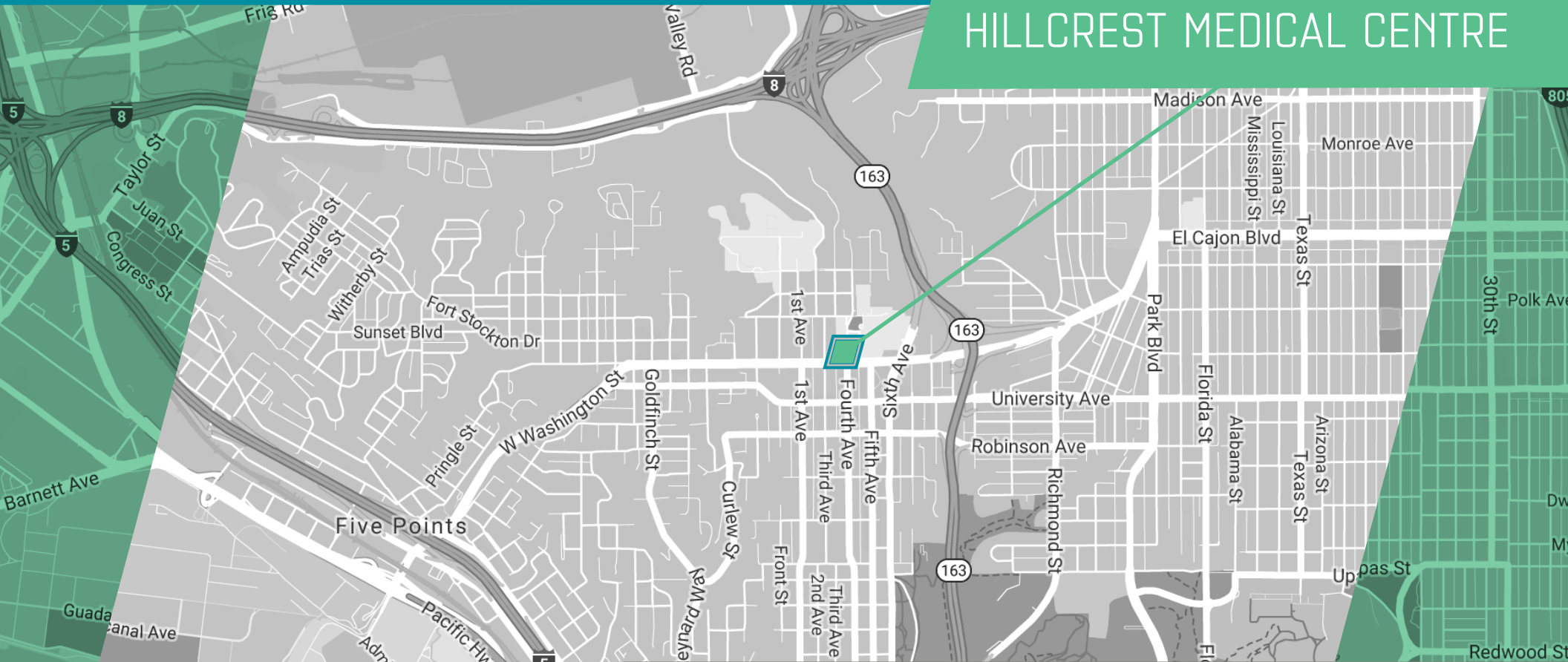
AVAILABILITIES

Floor	Suite	Rentable SF	Asking Rates
1	105*	831 SF	Negotiable
2	200**	2,744 SF	Negotiable
2	202**	1,075 SF	Negotiable
2	206**	1,237 SF	Negotiable
3	300*	4,118 SF	Negotiable
4	400	3,408 RSF	Negotiable

*Currently in shell condition.

**Can be combined with Suites 200 and 202 for 5,056 SF

HILLCREST MEDICAL CENTRE

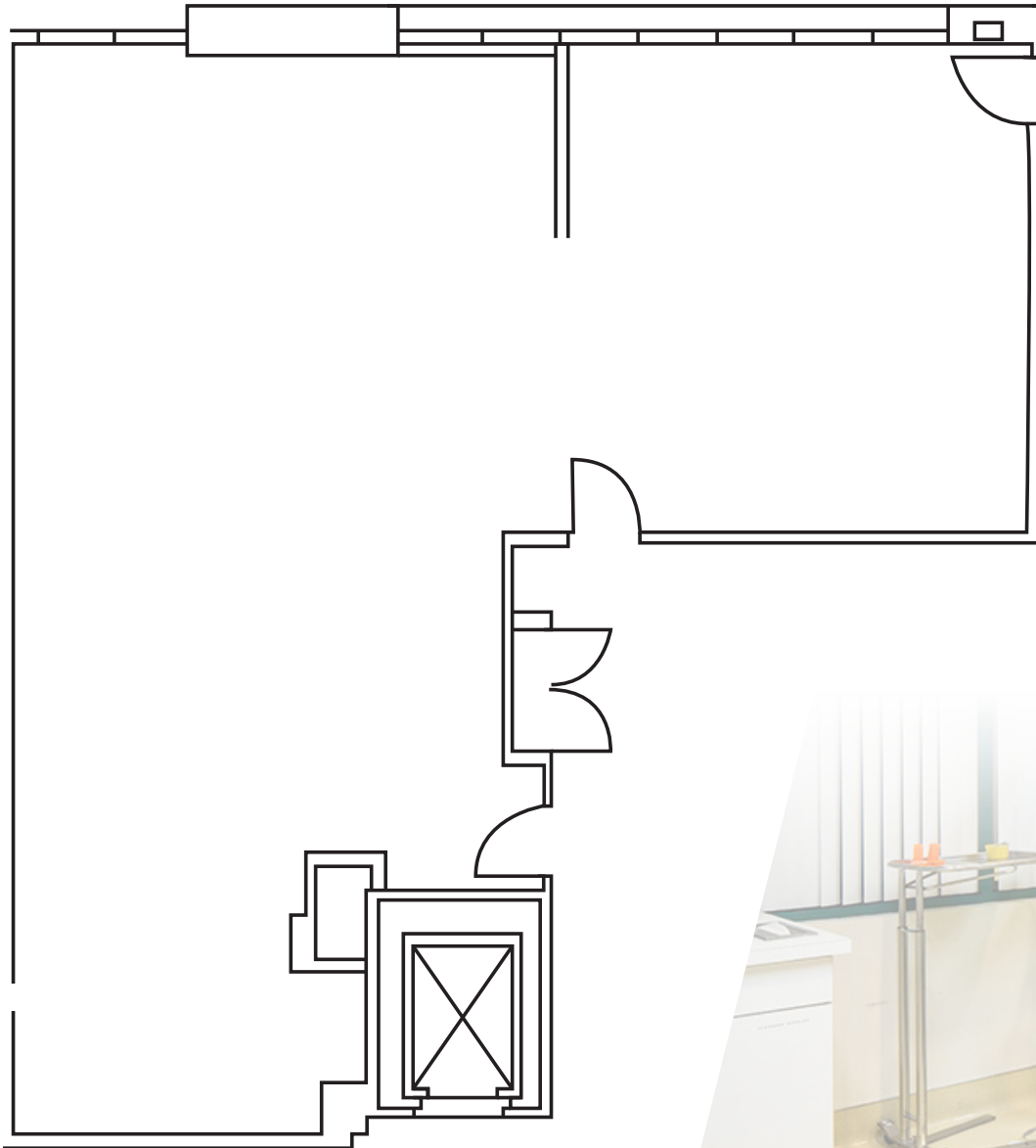


FLOOR PLANS

SUITE 105

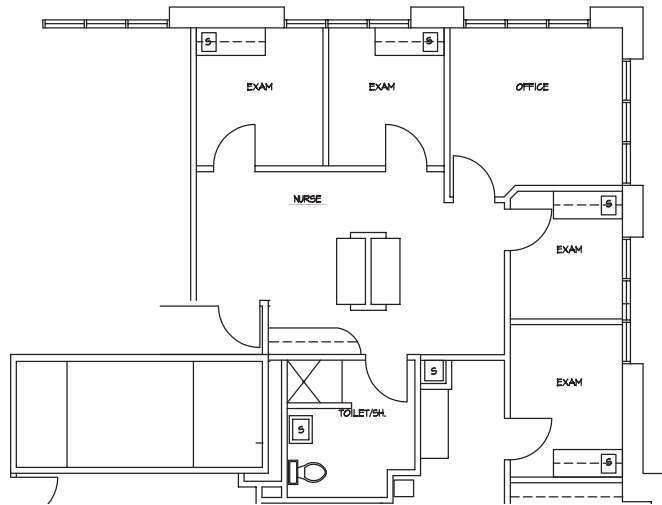
831 Square Feet

Shell Condition

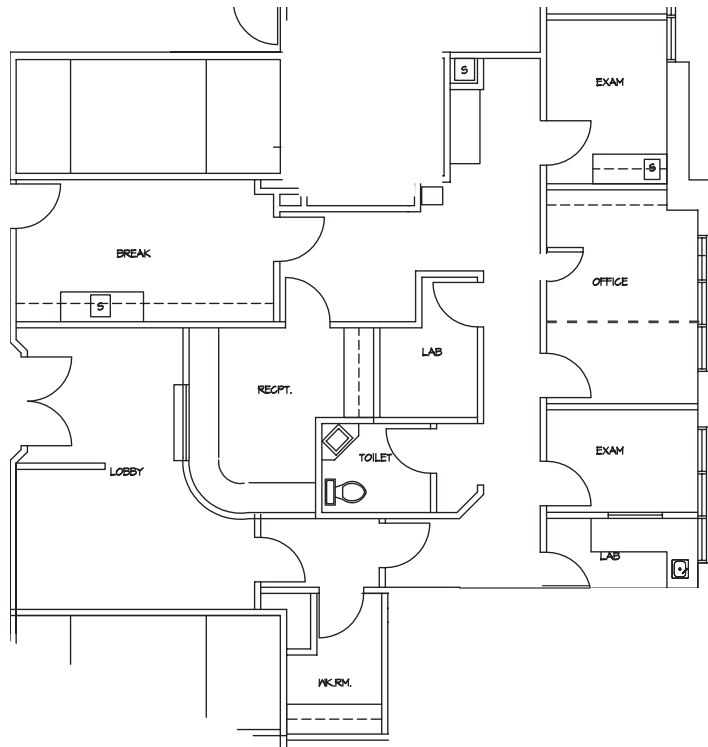


FLOOR PLANS

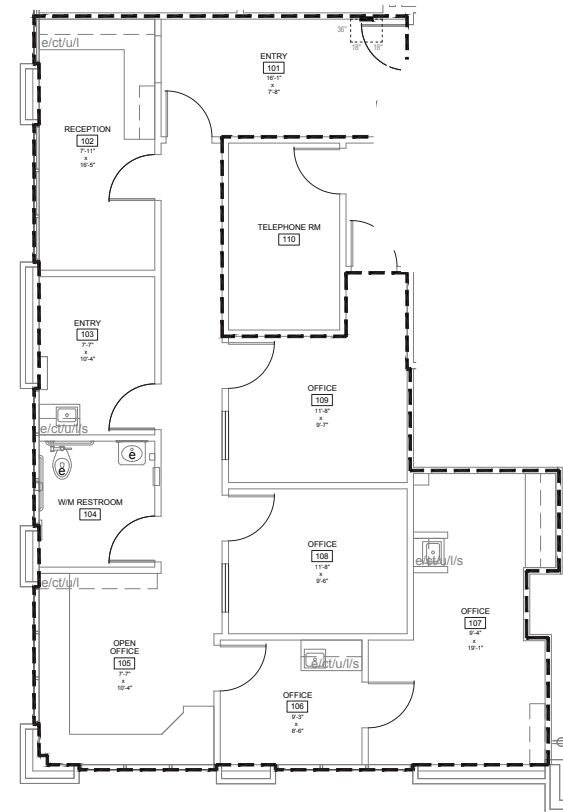
SUITE 202
1,075 Square Feet



SUITE 200
2,744 Square Feet

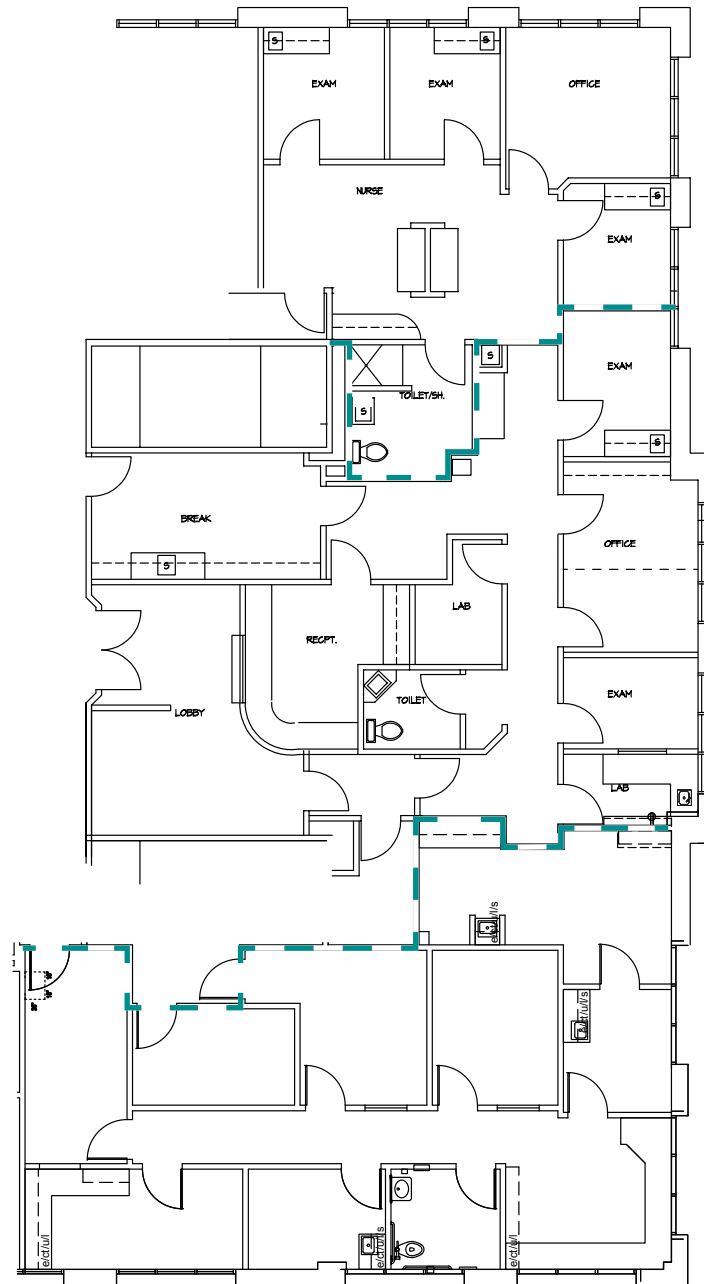


SUITE 206
1,237 Square Feet



FLOOR PLANS

SUITE 200, 202 & 206
5,056 Square Feet

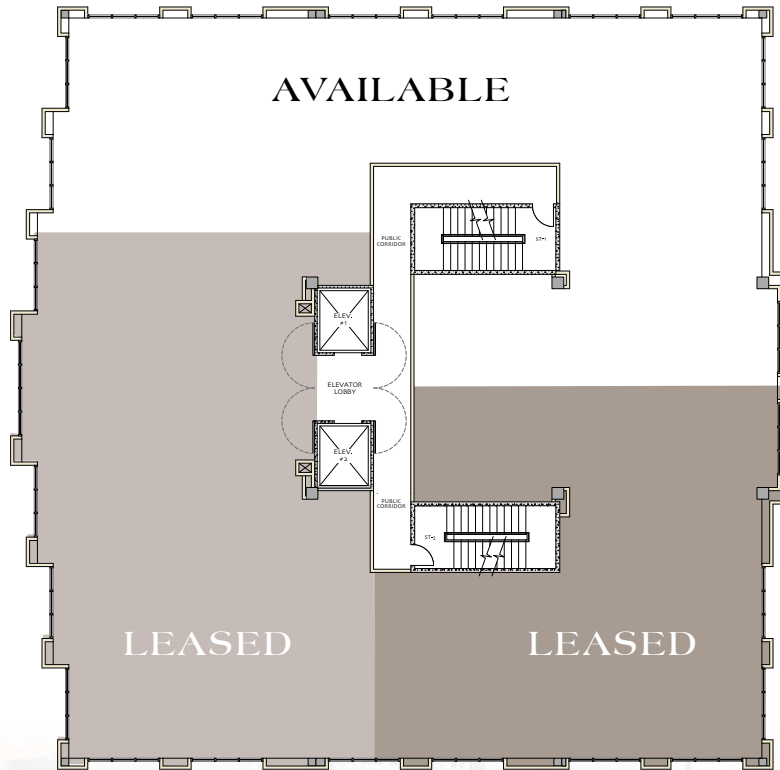


FLOOR PLANS

SUITE 300

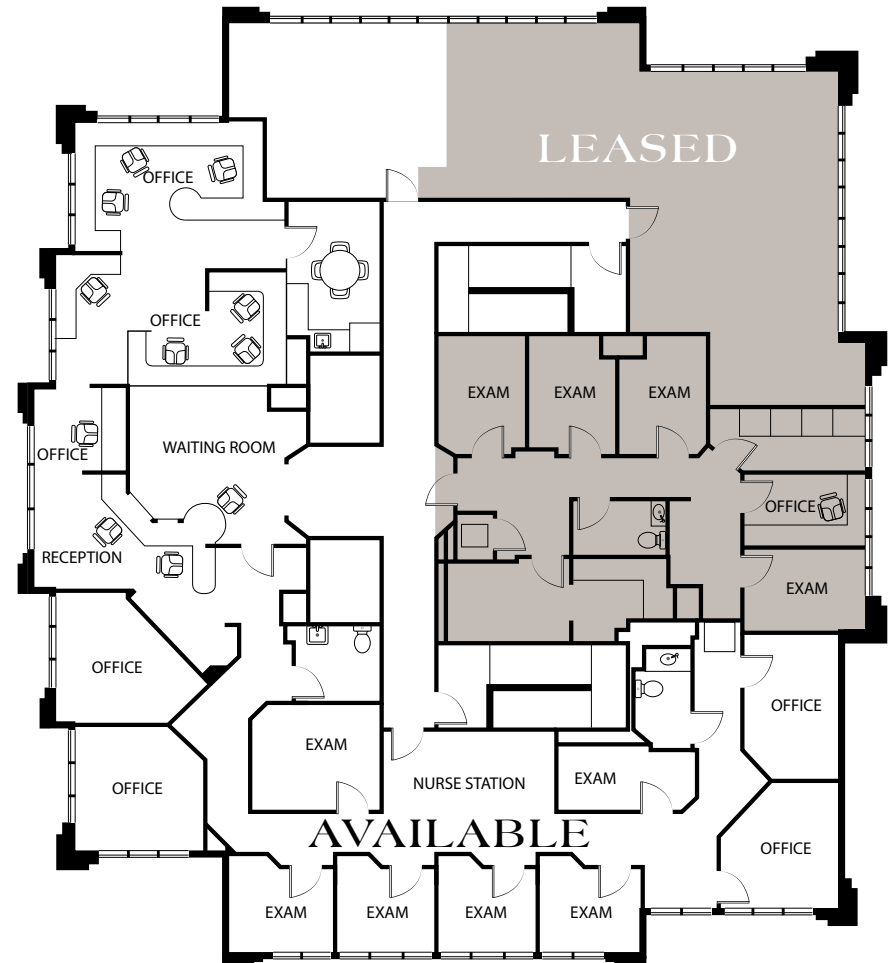
4,118 Square Feet

Shell Condition | Divisible to 2,000 Square Feet



SUITE 400

3,408 Square Feet



MEDICAL OFFICE SPACE FOR LEASE

4033 Third Avenue // San Diego, California



// **Lars Eisenhauer**

Vice President

Lic. 01372911

+1 760 438 8534

lars.eisenhauer@cbre.com

// **Dan Henry**

Vice President

Lic. 02035998

+1 760 438 8569

dan.henry@cbre.com

// **CBRE, Inc.**

5780 Fleet Street

Suite 100

Carlsbad, CA 92008

www.cbre.com/sandiego

CBRE

CBRE, INC. // Broker Lic. 00409987

© 2019 CBRE, Inc. All rights reserved. This information has been obtained from sources believed reliable, but has not been verified for accuracy or completeness. You should conduct a careful, independent investigation of the property and verify all information. Any reliance on this information is solely at your own risk. CBRE and the CBRE logo are service marks of CBRE, Inc. All other marks displayed on this document are the property of their respective owners. Photos herein are the property of their respective owners. Use of these images without the express written consent of the owner is prohibited.