

SR-64 & 117th Street | Lakewood Ranch, Florida



PARCEL SIZE

21 acres

LOCATION

SEC SR-64 & 117th Street East
Bradenton, Florida 34211

TRAFFIC COUNTS

SR-64 - 29,500 ADT

KEY DEMOGRAPHICS

3-MILE RADIUS

POPULATION

Current Estimated Population	27,051
Projected Population (5 Years)	31,115
2010 Census Population	13,531

HOUSEHOLDS

Current Estimated Households	9,890
Projected Households (5 Years)	10,561
2010 Census Households	5,072

INCOME

Average Household Income	\$77,335
Household Income \$75,000+	64.7%

MEDIAN AGE

50 years

DAYTIME DEMOGRAPHICS

Number of Businesses	677
Number of Employees	5,089
Total Daytime Population	15,437

CONSUMER EXPENDITURES

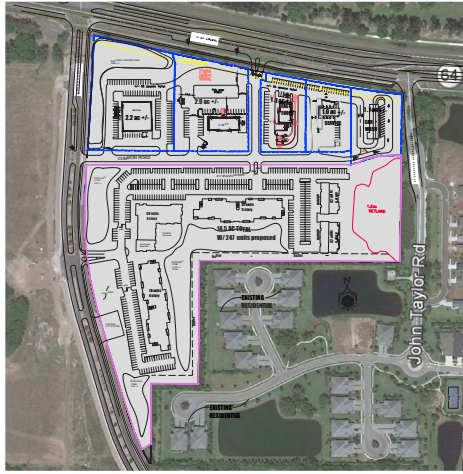
Total Retail Expenditures	\$274 M
Per Household per Month	\$2,305

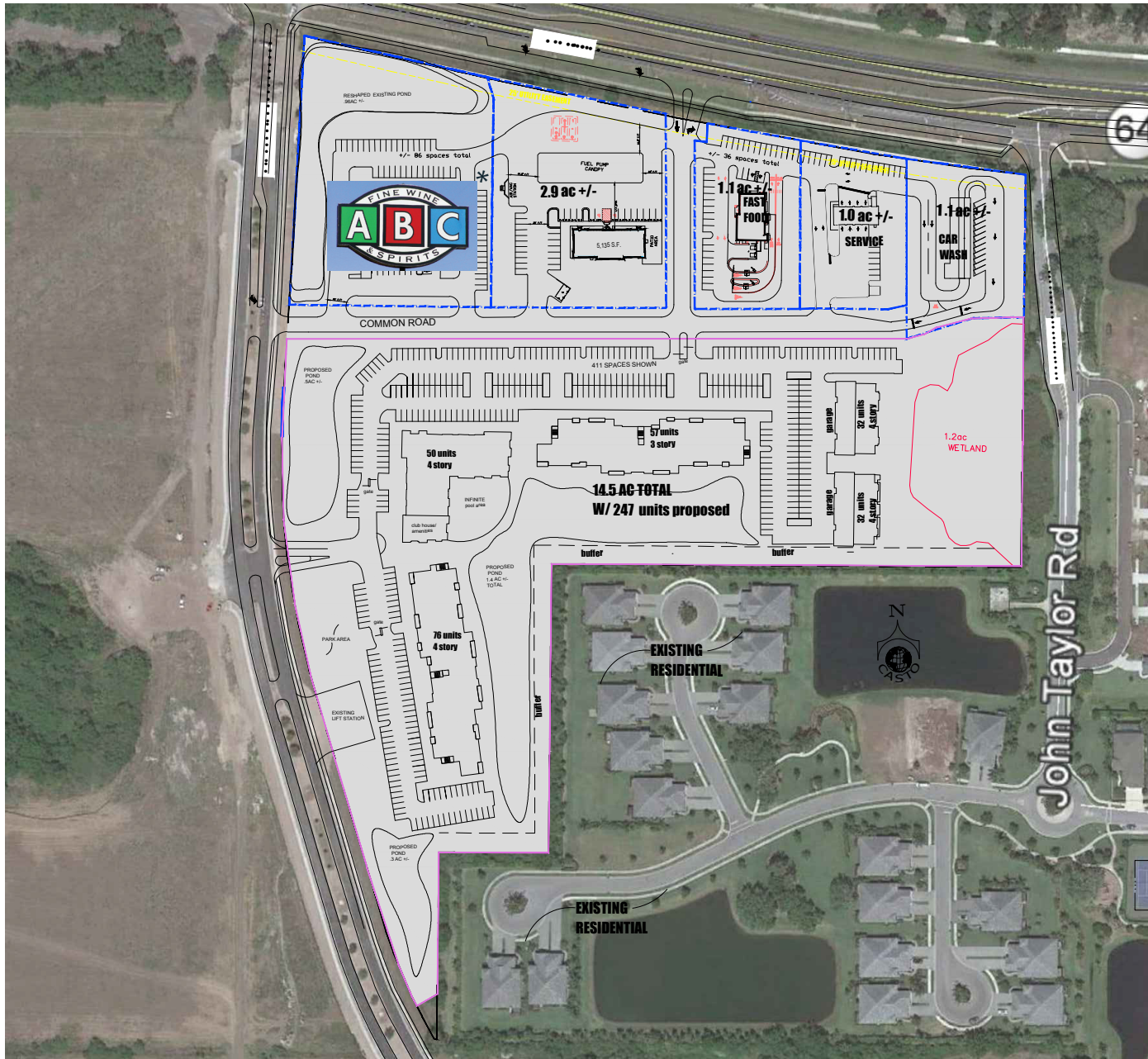
CASTO

5391 Lakewood Ranch Blvd., Suite 100
Sarasota, Florida 34240
www.castoinfo.com

LEASING CONTACT

Massimo Rastrelli
941.552.4336 OFFICE
MRastrelli@castoinfo.com





SR-64 & 117th Street | Lakewood Ranch, Florida

