

Pacific Business Park Building 5

7012 S 220th Street
Kent, WA

5,000 SF total

931 SF office

\$0.70 PSF shell

\$0.85 PSF, NNN office add-on

4 dock-high doors

2 grade-level door

14' - 16' clear height

Comcast Cable available

Available February 1, 2018

**Rare small dock
served space**



Tremendous access to I-5 and SR-167 via S 212th Street



Doug Klein, SIOR

Senior Vice President

206.248.7348

dklein@kiddermathews.com

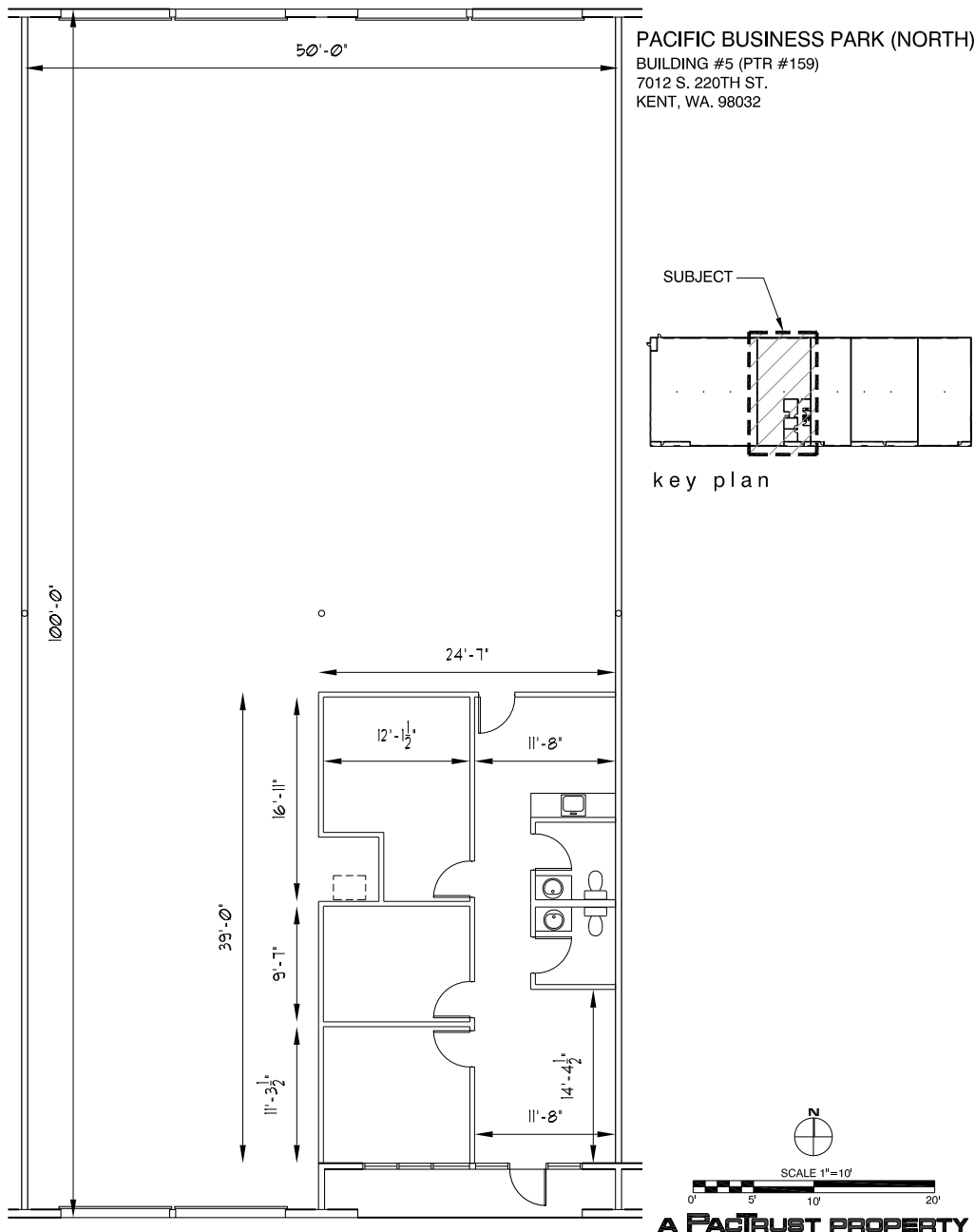
Kraig Heeter

Vice President

206.248.7313

kheeter@kiddermathews.com

Pacific Business Park Building 5



Contact

Doug Klein, SIOR
 Senior Vice President
 206.248.7348
 dklein@kiddermathews.com

Kraig Heeter
 Vice President
 206.248.7313
 kheeter@kiddermathews.com