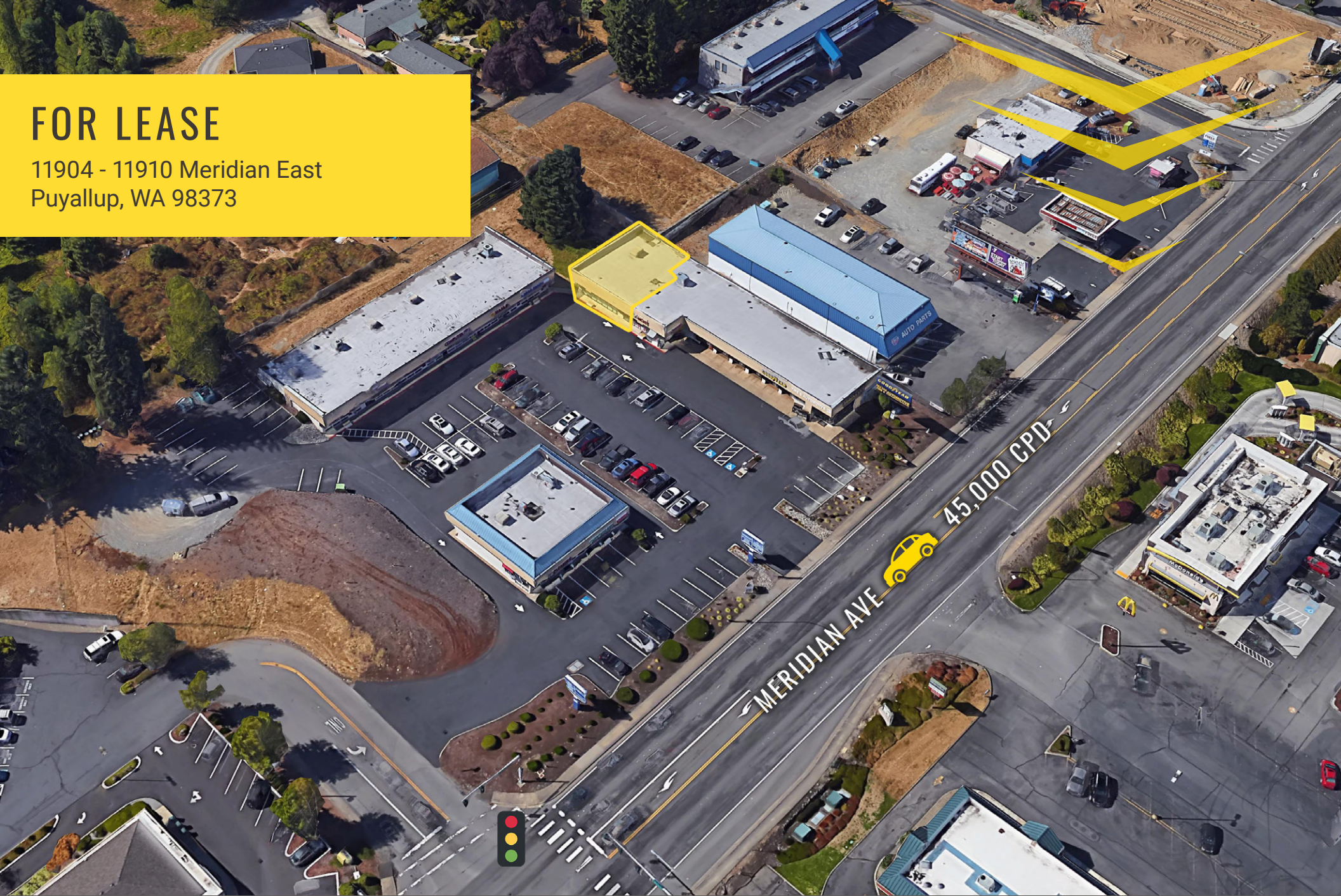


FOR LEASE

11904 - 11910 Meridian East
Puyallup, WA 98373



MERIDIAN SQUARE

Blake Weber | Tim Weber | Don Whittles

First Western Properties—Tacoma Inc. | 253.472.0404
6402 Tacoma Mall Blvd, Tacoma, WA 98409 | fwp-inc.com

11904 - 11910 MERIDIAN EAST:

1,918 SF \$22.00 PSF

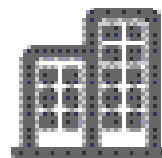
- Pylon signage available
- Located on South Hill Meridian with high traffic volume
- Close to South Hill Mall, Walgreens, Starbucks, YMCA and other major retailers!



Population



Average HH Income



Daytime Population

Regis - 2019

	Population	Average HH Income	Daytime Population
Mile 1	9,886	\$79,363	9,851
Mile 3	85,306	\$95,818	54,916
Mile 5	174,014	\$96,653	102,563

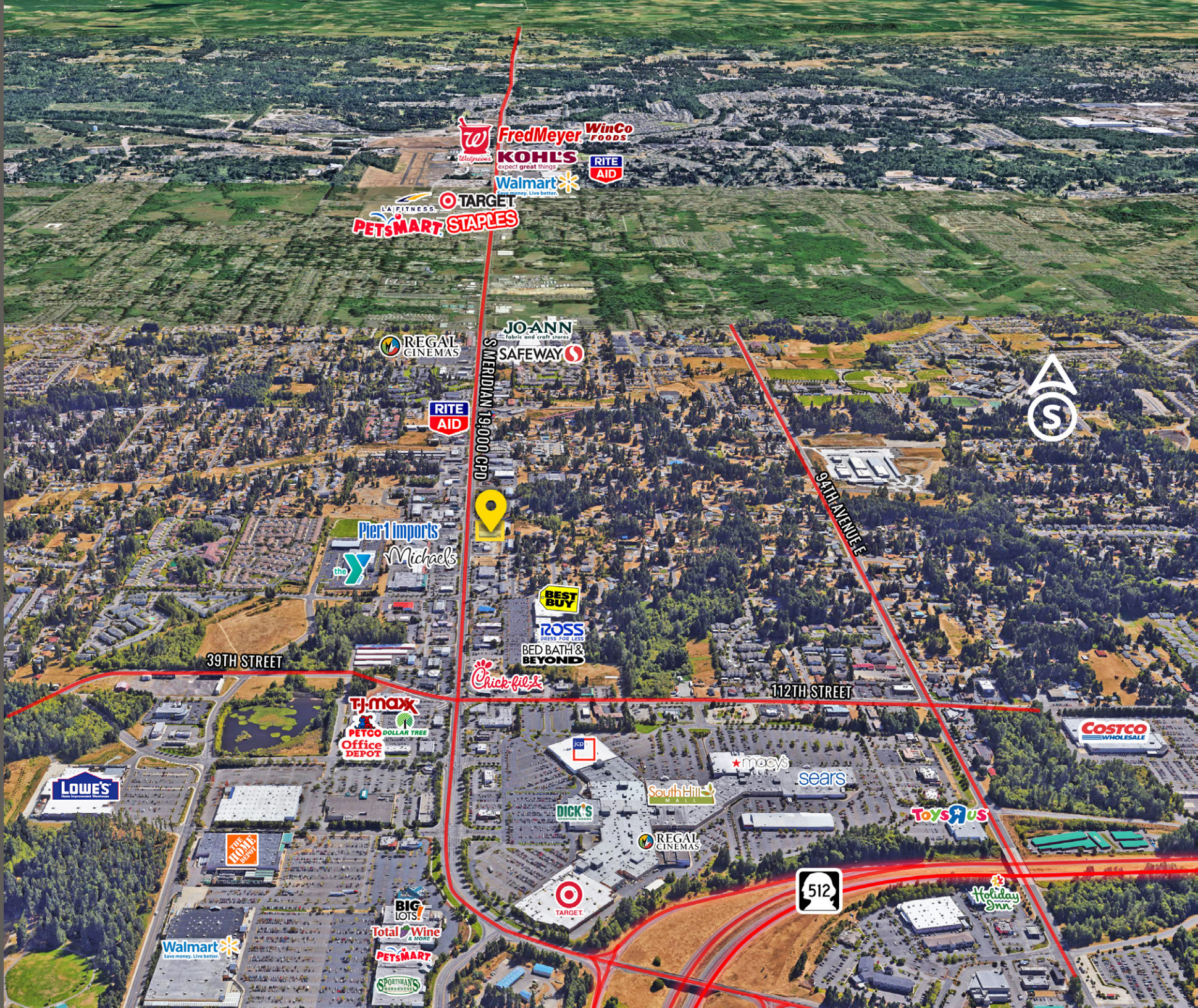
TENANTS



NEARBY TENANTS



LOCATION AERIAL



Fred Meyer
WinCo Foods
Kohl's
Walmart
RITE AID
LA FITNESS
TARGET
PETS MART
STAPLES

REGAL CINEMAS
JO-ANN
SAFeway

RITE AID



Pier 1 Imports
the Y
Michaels

BEST BUY
ROSS
BED BATH & BEYOND

Chick-fil-e

TJ-maxx
PETCO
DOLLAR TREE
Office DEPOT

LOWE'S

THE HOME DEPOT

DICK'S

South Hill

macy's

sears

Toys R Us

COSTCO
WHOLESALE

Holiday Inn

TARGET

BIG LOTS!

Total Wine

PETS MART

SPORTSMAN'S
WAREHOUSE



SITE PLAN



MERIDIAN STREET

DEMOGRAPHICS

POPULATION

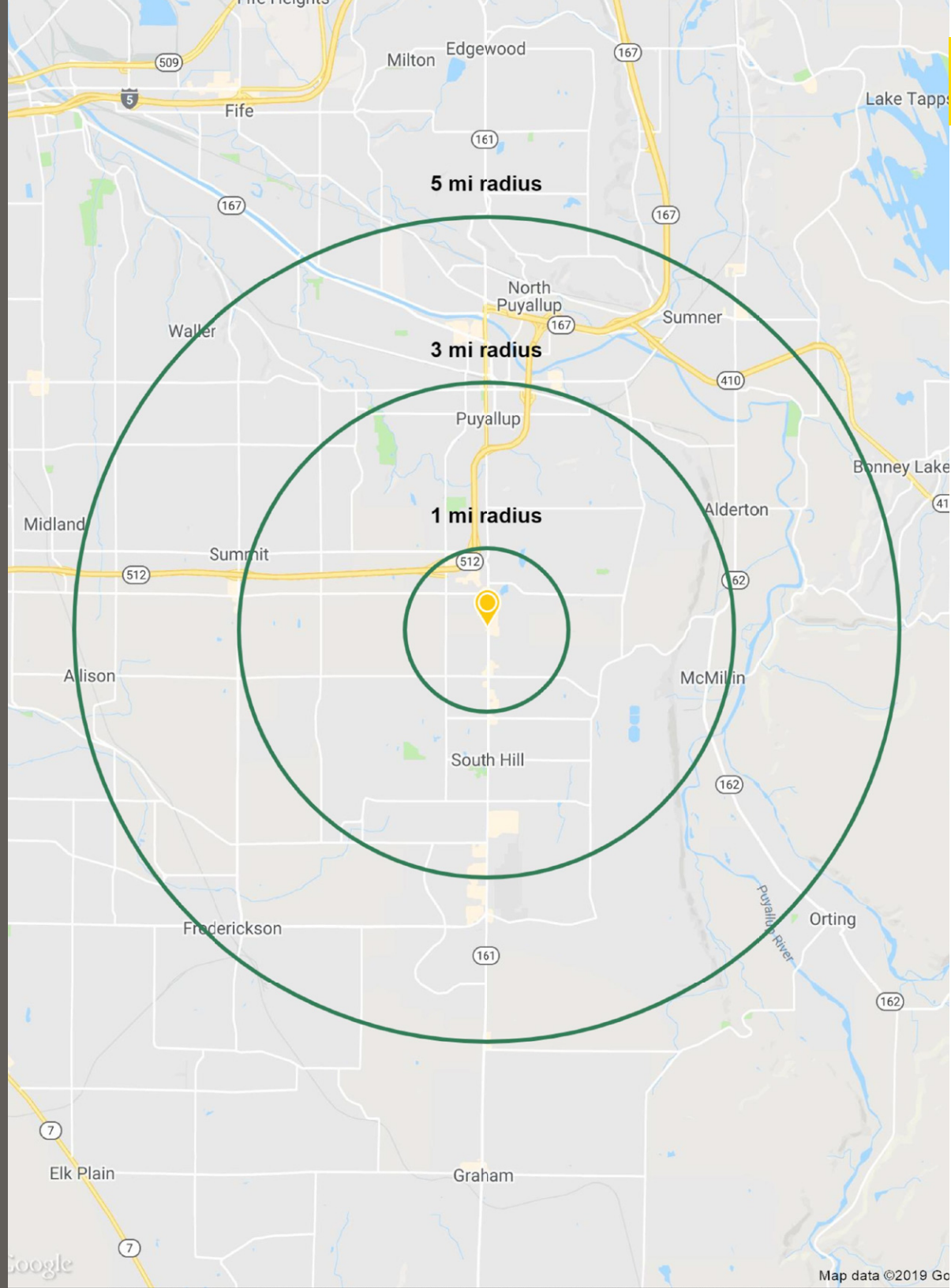
Mile 1	Mile 3	Mile 5
9,886	85,306	174,014

AVERAGE HH INCOME

Mile 1	Mile 3	Mile 5
\$79,363	\$95,818	\$96,653

DAYTIME POPULATION

Mile 1	Mile 3	Mile 5
9,851	54,916	102,563



SUMMARY





PUYALLUP, WA is just 35 miles south of Seattle situated at the foot of scenic Mount Rainier. Puyallup plays host to the Washington State Fair, where over one million people attend each September. The city has a rich agricultural past but there is much more to Puyallup than meets the eye. The retail shopping centers, dining opportunities and a modern regional medical center are just some of the many amenities appreciated by residents and visitors.

TACOMA | KIRKLAND | PORTLAND | SEATTLE



RETAIL FOCUSED. RESULTS DRIVEN.

BLAKE WEBER

253.284.3646
bweber@firstwesternproperties.com

DON WHITTLES

253.471.5509
dwhittles@firstwesternproperties.com

TIM WEBER

253.471.5502
tweber@firstwesternproperties.com



First Western Properties—Tacoma Inc. | 253.472.0404
6402 Tacoma Mall Blvd, Tacoma, WA 98409 | fwp-inc.com

© First Western Properties, Inc. DISCLAIMER: The above information has been secured from sources believed to be reliable, however, no representations are made to its accuracy. Prospective tenants or buyers should consult their professional advisors and conduct their own independent investigation. Properties are subject to change in price and/or availability without notice.