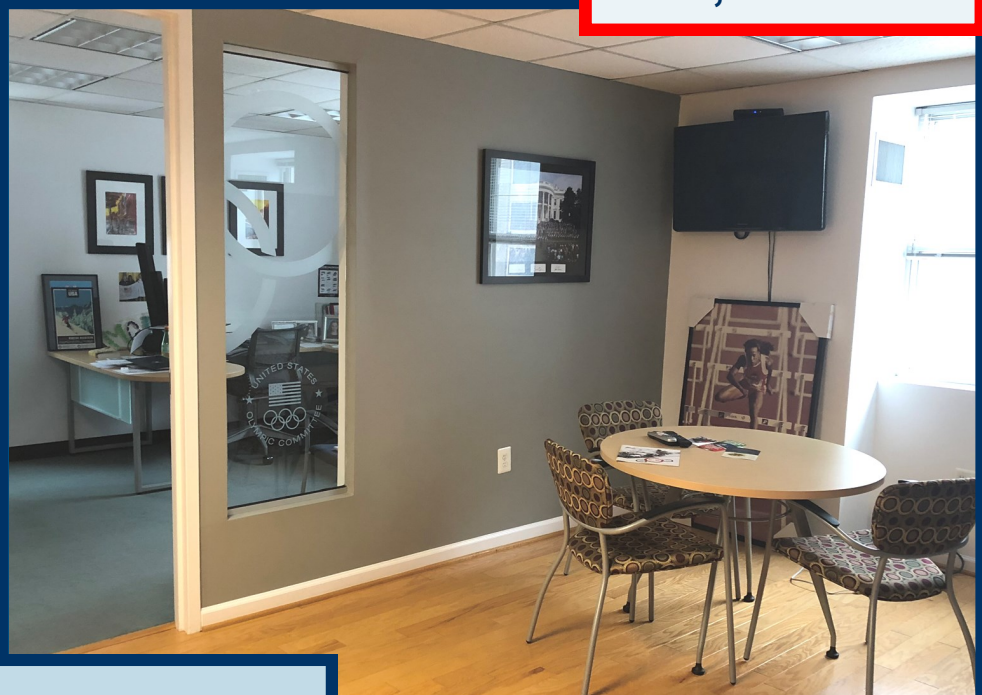


6TH FLOOR CORNER OFFICE SUITE WITH HARDWOOD FLOORS & LOVELY LIGHT

- 6TH FLOOR TURNKEY CORNER OFFICE SUITE FACING 11TH STREET NW AND H STREET NW
- WORK ROOM/PANTRY
- CONFERENCE ROOM
- RECEPTION AREA
- OPEN AREA
- 5 WINDOWED OFFICES WITH LARGE GLASS SIDELIGHTS
- GREAT VIEWS OF CITY CENTER AND DOWNTOWN DC

SUITE 600
2,091 SF

1100 H STREET NW
WASHINGTON, D.C. 20005



\$42 PSF
FULL SERVICE

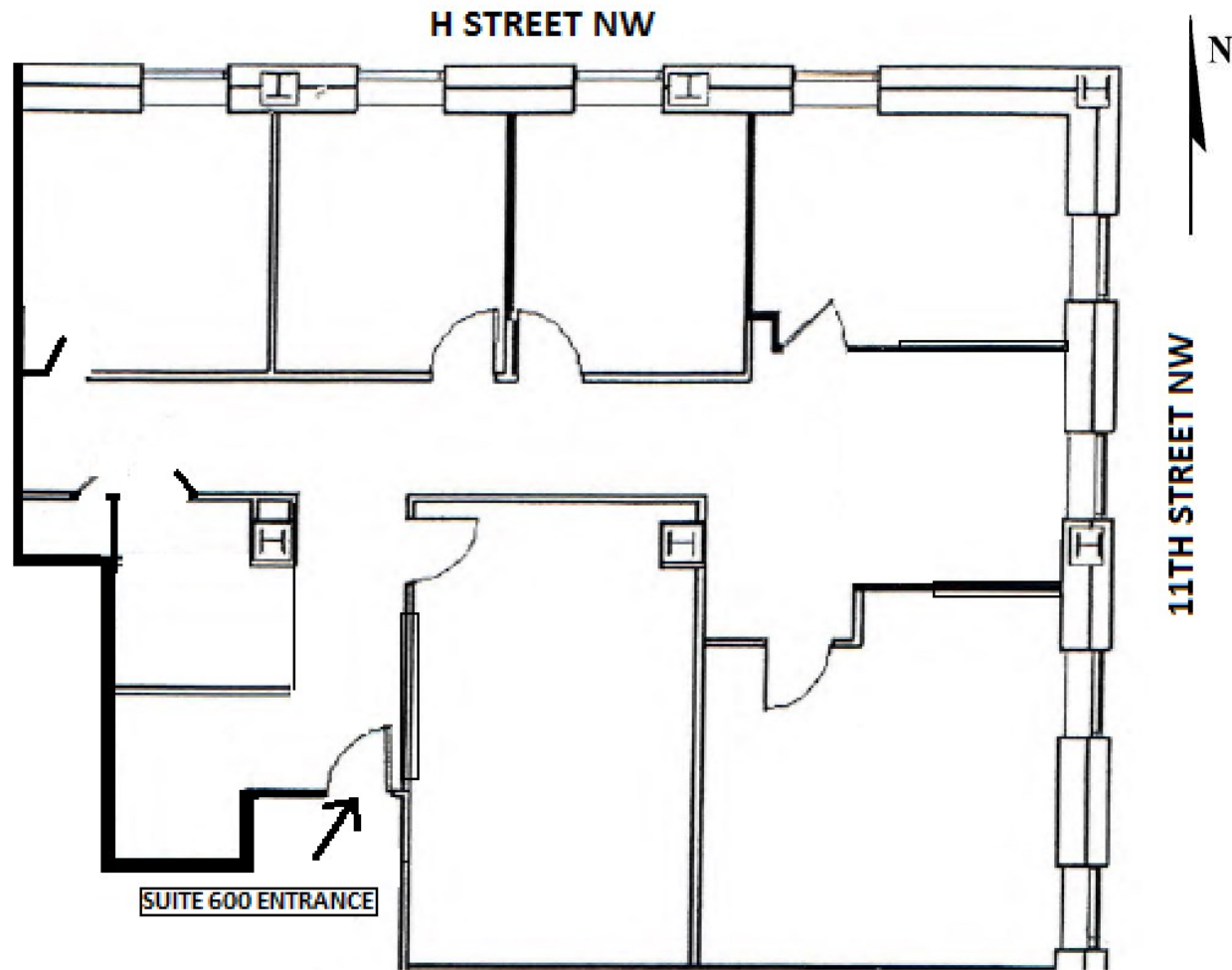
TED VOGEL
MOLLYE SCHNEEBERG
MSCHNEEBERG@RBPROPERTIESINC.COM
(202) 342-1054
WWW.RBPROPERTIESINC.COM
RB properties, inc.



1100 H STREET NW

SUITE 600

2,091 SF



NOT TO SCALE. IMAGE IS APPROXIMATE AND SUBJECT TO VERIFICATION.

12-03-18

Suite 600

