

288 WEST STREET

Between Canal & Watts Streets



DETAILS:

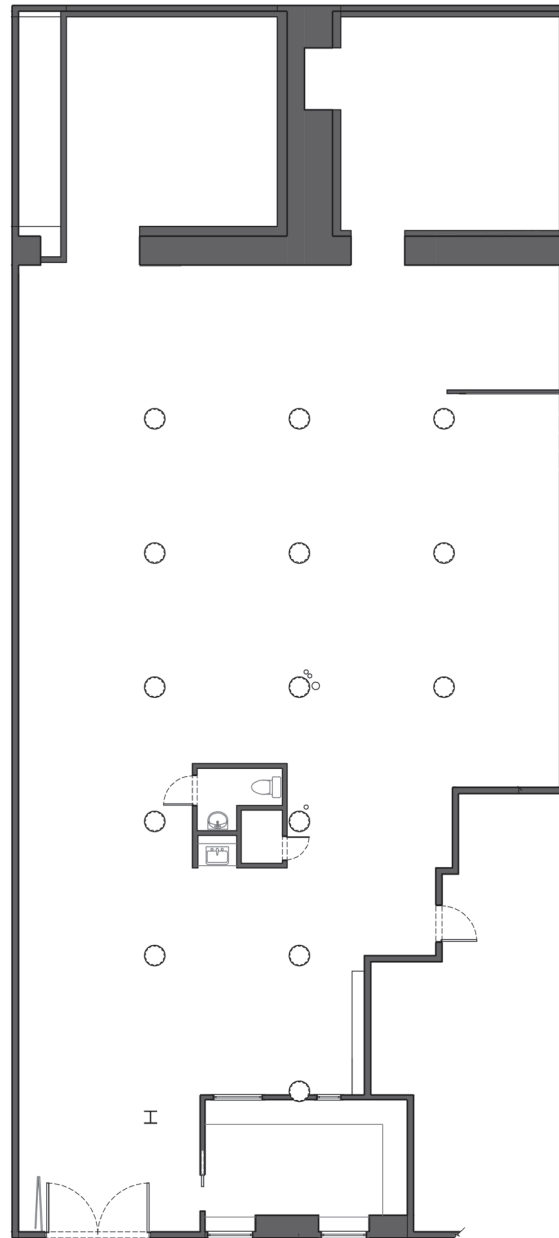
Ground Level...4,000 SF
Frontage.....31' 5"
Ceiling Height.....13'
Term.....Negotiable
PossessionImmediate
Asking..\$200,000/Year

NOTES:

- Ground floor commercial space in historic waterfront building
- Elegant red brick facade with arched windows and doorway
- The interior features Corinthian columns, exposed wood beams, and brick walls

NEIGHBORS:

- China Blue
- Greca
- La Garconne
- Dogpound
- Ear Inn
- Arlo Hotel



FOR MORE INFORMATION, PLEASE CONTACT:

Michael Glanzberg
212.604.9004
michael@sinvin.com

Christopher Owles
212.604.9002
chris@sinvin.com