

# Freestanding Office Building For Lease

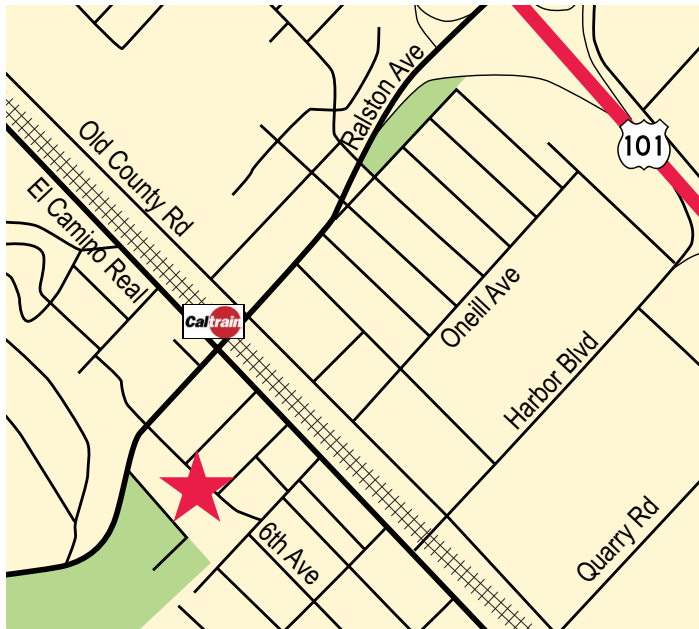
1200 6th Avenue

Belmont, CA



**±2,889 Square Feet Available (Divisible to ±216 SF)**

As exclusive agent(s), we are pleased to offer the following space:



- ◆ High Image Freestanding Office Building
- ◆ Great Location Near Numerous Amenities
- ◆ Fully Sprinklered
- ◆ Interior & Exterior Completely Remodeled in 2018
- ◆ Keyless Entry and Intercom System
- ◆ Heat and AC Throughout
- ◆ New Water Heater
- ◆ 0.3 Miles to Caltrain
- ◆ 12 Off-Street Parking Spaces
- ◆ 2 Restrooms Including 1 Shower
- ◆ Flexible Term (2-5 Years)

**Jay Leslie** 650.358.5273 [jleslie@ngkf.com](mailto:jleslie@ngkf.com) CA RE License #01244555

**Deborah O'Reilly** 650.358.5256 [doreilly@ngkf.com](mailto:doreilly@ngkf.com) CA RE License #01895522



2950 South Delaware Street, Suite 125, San Mateo, CA 94403

[www.ngkf.com](http://www.ngkf.com)

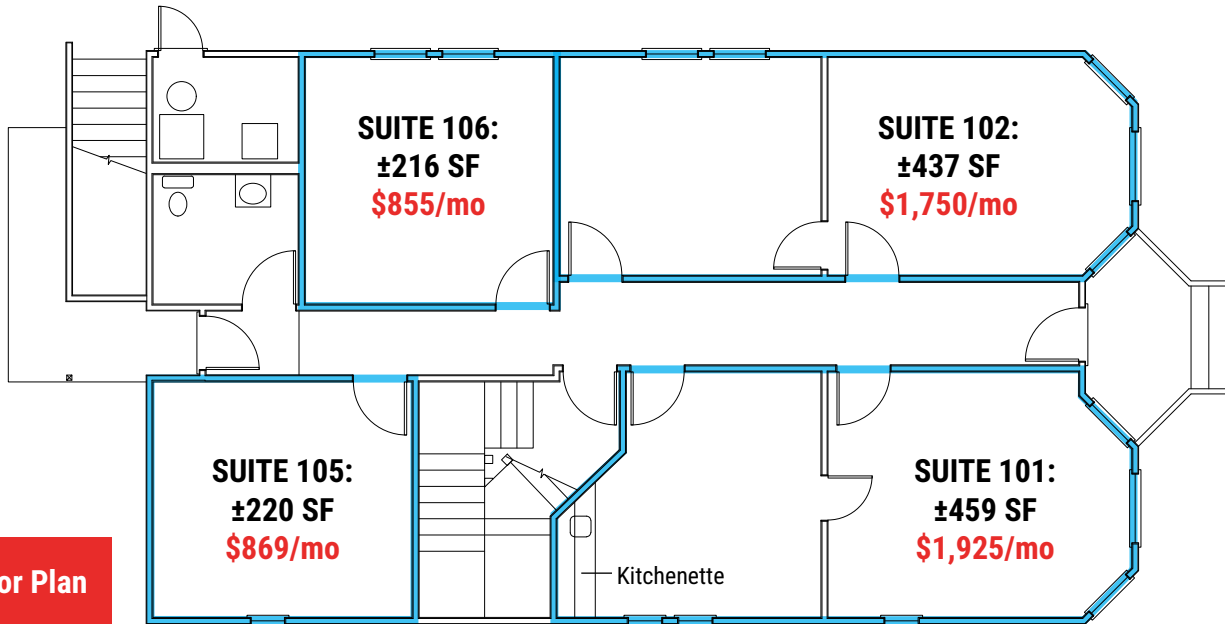
The distributor of this communication is performing acts for which a real estate license is required. The information contained herein has been obtained from sources deemed reliable but has not been verified and no guarantee, warranty or representation, either express or implied, is made with respect to such information. Terms of sale or lease and availability are subject to change or withdrawal without notice.

18-1627 • 08/19

# Freestanding Office Building For Lease

1200 6th Avenue

Belmont, CA



First Floor Plan



**Jay Leslie** 650.358.5273 [jleslie@ngkf.com](mailto:jleslie@ngkf.com) CA RE License #01244555

**Deborah O'Reilly** 650.358.5256 [doreilly@ngkf.com](mailto:doreilly@ngkf.com) CA RE License #01895522

2950 South Delaware Street, Suite 125, San Mateo, CA 94403

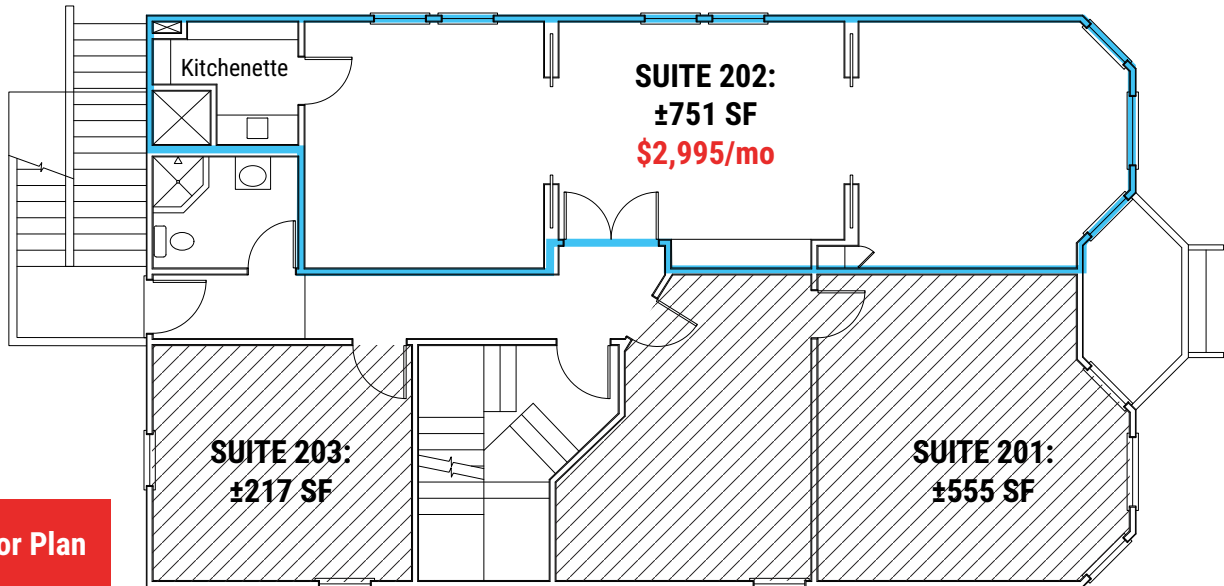
[www.ngkf.com](http://www.ngkf.com)

The distributor of this communication is performing acts for which a real estate license is required. The information contained herein has been obtained from sources deemed reliable but has not been verified and no guarantee, warranty or representation, either express or implied, is made with respect to such information. Terms of sale or lease and availability are subject to change or withdrawal without notice.

# Freestanding Office Building For Lease

1200 6th Avenue

Belmont, CA



Second Floor Plan



**Jay Leslie** 650.358.5273 [jleslie@ngkf.com](mailto:jleslie@ngkf.com) CA RE License #01244555

**Deborah O'Reilly** 650.358.5256 [doreilly@ngkf.com](mailto:doreilly@ngkf.com) CA RE License #01895522

2950 South Delaware Street, Suite 125, San Mateo, CA 94403

[www.ngkf.com](http://www.ngkf.com)

The distributor of this communication is performing acts for which a real estate license is required. The information contained herein has been obtained from sources deemed reliable but has not been verified and no guarantee, warranty or representation, either express or implied, is made with respect to such information. Terms of sale or lease and availability are subject to change or withdrawal without notice.



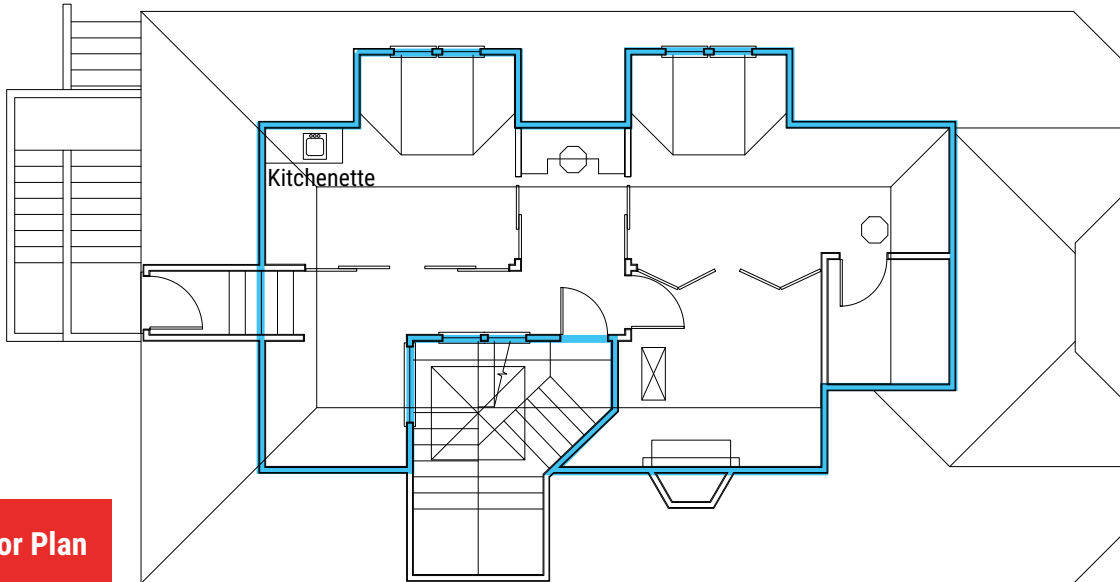
# Freestanding Office Building For Lease

1200 6th Avenue

Belmont, CA

**SUITE 301: ±806 SF with dividers for 4 separate work areas & kitchenette**

**\$2,750/mo**



Third Floor Plan



**Jay Leslie** 650.358.5273 [jleslie@ngkf.com](mailto:jleslie@ngkf.com) CA RE License #01244555

**Deborah O'Reilly** 650.358.5256 [doreilly@ngkf.com](mailto:doreilly@ngkf.com) CA RE License #01895522

2950 South Delaware Street, Suite 125, San Mateo, CA 94403

[www.ngkf.com](http://www.ngkf.com)

The distributor of this communication is performing acts for which a real estate license is required. The information contained herein has been obtained from sources deemed reliable but has not been verified and no guarantee, warranty or representation, either express or implied, is made with respect to such information. Terms of sale or lease and availability are subject to change or withdrawal without notice.

18-1627 • 08/19



# Freestanding Office Building For Lease

1200 6th Avenue

Belmont, CA



Jay Leslie 650.358.5273 [jleslie@ngkf.com](mailto:jleslie@ngkf.com) CA RE License #01244555

Deborah O'Reilly 650.358.5256 [doreilly@ngkf.com](mailto:doreilly@ngkf.com) CA RE License #01895522

2950 South Delaware Street, Suite 125, San Mateo, CA 94403

[www.ngkf.com](http://www.ngkf.com)



The distributor of this communication is performing acts for which a real estate license is required. The information contained herein has been obtained from sources deemed reliable but has not been verified and no guarantee, warranty or representation, either express or implied, is made with respect to such information. Terms of sale or lease and availability are subject to change or withdrawal without notice.