

CLASS A

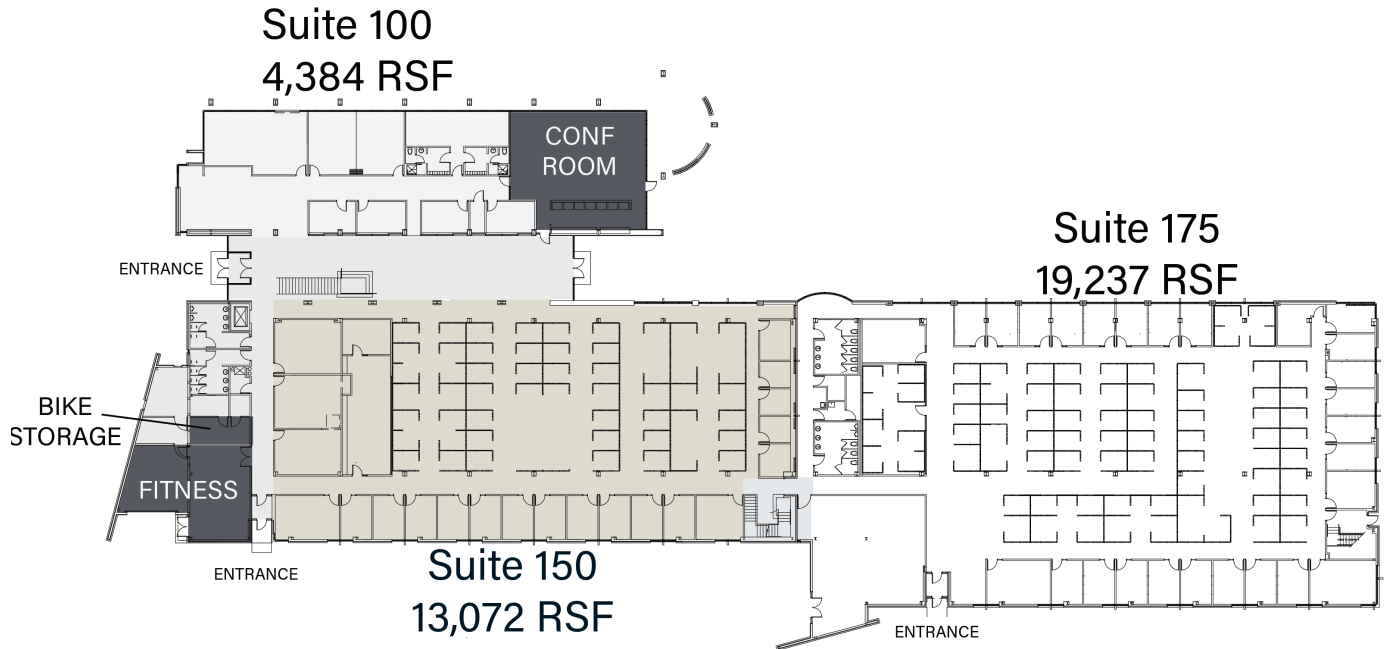
# Headquarters Opportunity

6400 WESTOWN PARKWAY  
WEST DES MOINES, IA

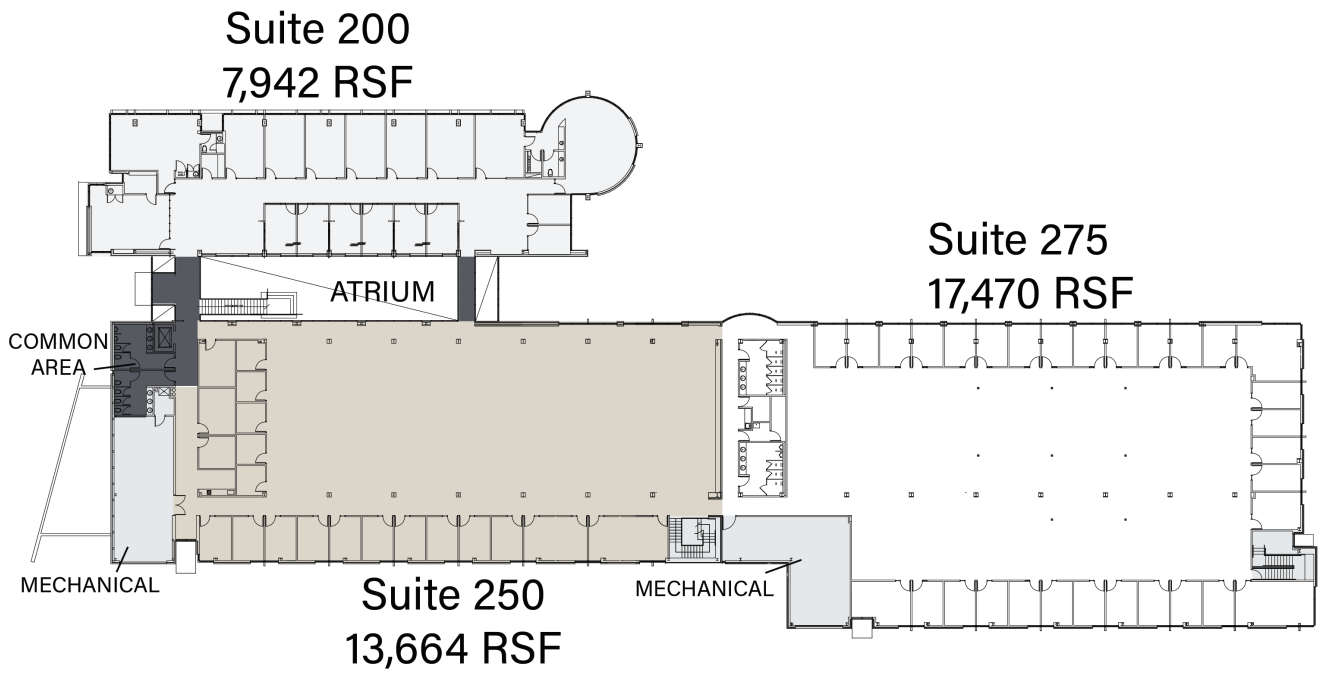




First Floor



Second Floor



# Availability & Terms

Approximately 80,800 SF total

1st Floor: approx. 40,098 SF

2nd Floor: approx. 40,702 SF

Immediate availability

Spaces available from 4,384 SF

Lease Rate: \$18.00/SF NNN

Operating Expenses: upon request

TI Allowance: Negotiable with long-term lease

Class A headquarters caliber building

Mix of executive offices & open areas

Significant IT infrastructure in place

Interstate monument signage

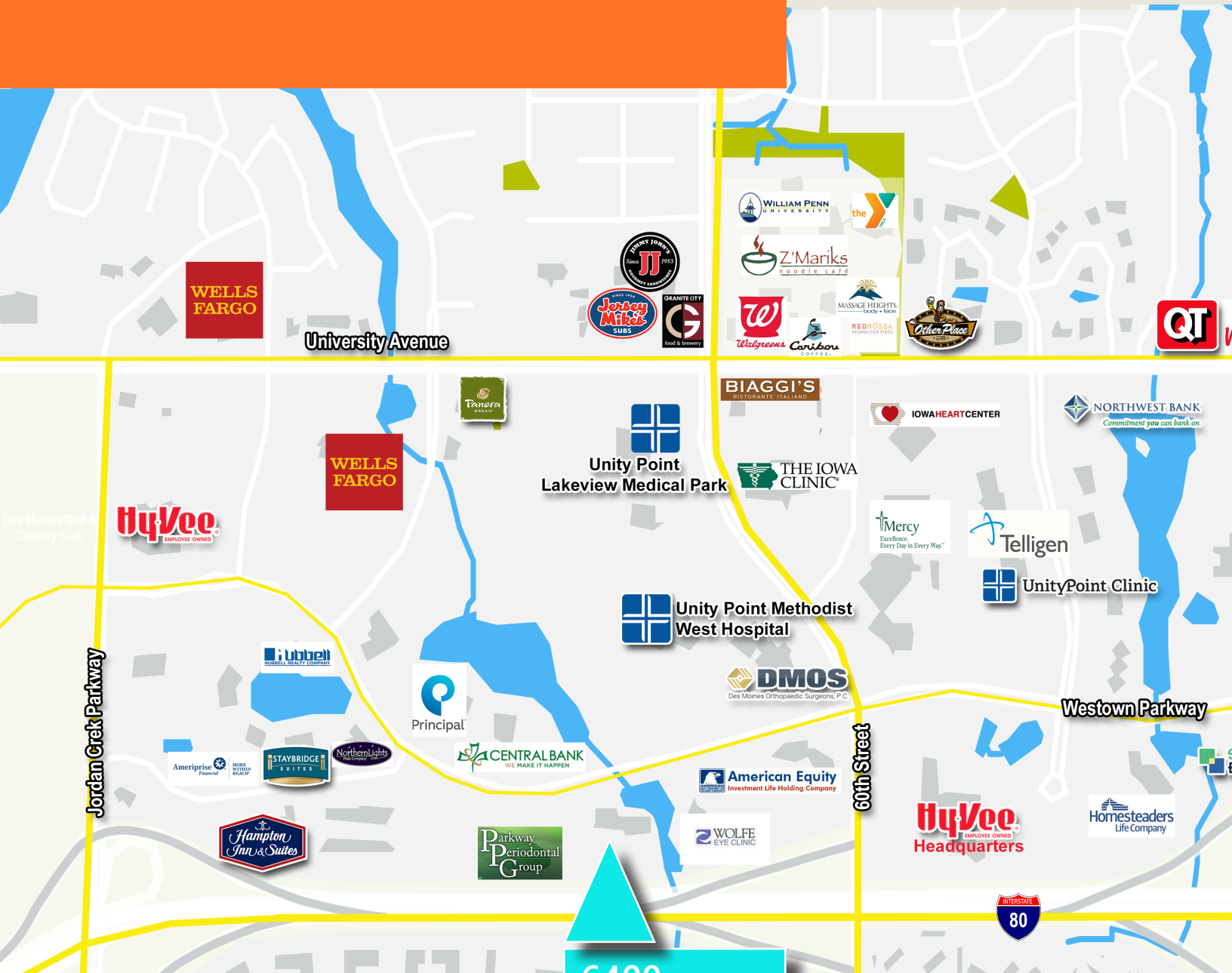
Beautiful lake views



# Location

Immediate access to retailers and restaurants

Excellent interstate visibility



6400  
Westown  
Parkway











# Amenities

Shared conference room

Fitness room featuring  
locker room and showers

Natural light throughout

Impressive multi-story,  
glass atrium common area

Ample free parking

Easy freeway access

Shared outdoor patio

Access to transit

Great views

Restaurants and shopping nearby



For leasing information, contact:



Justin Lossner, CCIM, SIOR  
Managing Director  
+1 515 371 0846  
justin.lossner@am.jll.com

Kate Fanter Byus  
Vice President  
+1 515 865 8216  
kate.byus@am.jll.com

The information contained herein has been given to us by the owner of the property or other sources we deem reliable. We have no reason to doubt its accuracy, but we do not guarantee it. All information should be verified prior to purchase or lease. Jones Lang LaSalle Brokerage, Inc. is a licensed broker in the State of Iowa.

Owned by:



Managed by:



**KNAPP PROPERTIES**