

Suite 60/80 Retail 3,767 RSF* \$32.00 NNN
*divisible to 1,700 RSF

Suite 136 Retail 2,415 RSF \$18.00 Gross

Suite 210 Office 1,250 RSF Call for Price

Suite 224 Office 1,273 RSF Call for Price

Suite 270 Office 1,809 RSF Call for Price

WINTER SPECIAL!

4% Commission to any tenant broker that can lease a retail space prior to the April 15, 2020

\$1.50 PSF to any tenant broker that can lease an office space prior to April 15, 2020

Office & Retail Space For Lease

225 East Deerpath Road
Lake Forest, Illinois 60045

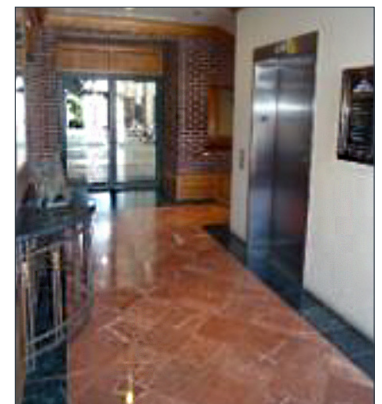
Affluent and desirable suburb on Chicago's North Shore.

FEATURES

- High End Class A Office Space
- Underground Parking Available
- 2 Blocks from Metra UP North Line
- Retail with frontage on Deerpath Road or Oakwood Avenue



2nd Floor Office Hallway



1st Floor Elevator Lobby

AREA DEMOGRAPHICS



Population

5,362

within .5 mile



Median Age

42

within .5 mile



Median Income

\$118,578

within .5 mile

25,088

within 1 mile

46

within 1 mile

\$137,582

within 1 mile

76,353

within 3 miles

33

within 3 miles

\$107,311

within 3 miles

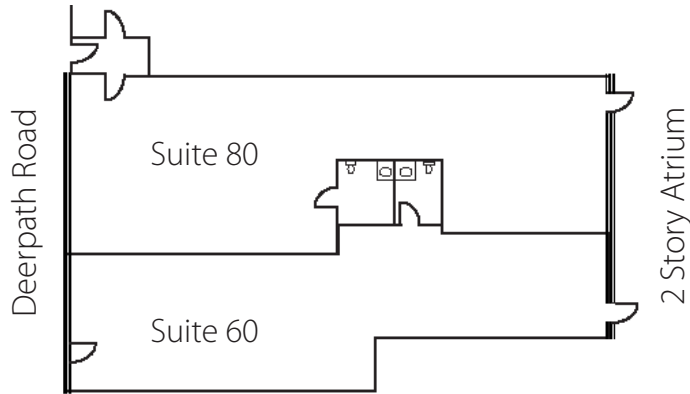


Suite 224 - Open Work Area / Conference Room

Available Space & Floorplans

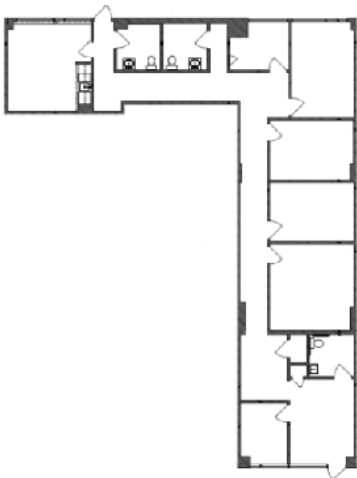
Suite 60/80 - Retail/Office

3,767 RSF (divisible to 1,700) | \$32.00 NNN



Suite 136 - Retail/Office

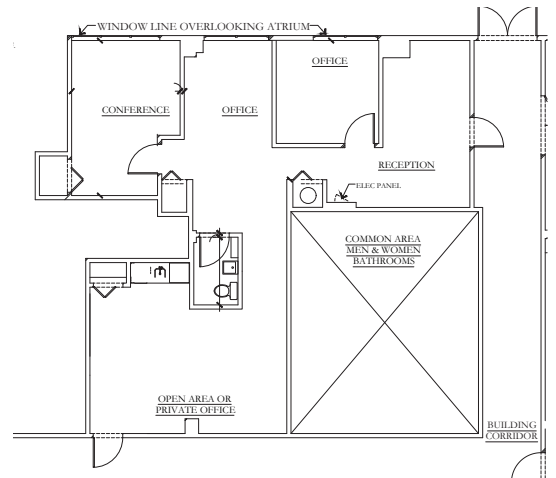
2,415 RSF | \$18.00 Gross



Oakwood Avenue

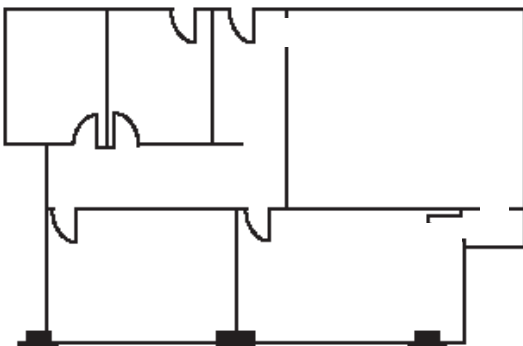
Suite 210 - Office

1,250 RSF | Call for Pricing



Suite 224 - Office

1,273 RSF | Call for Pricing



Suite 270 - Office

1,809 RSF | Call for Pricing

