

# 277 PARK AVENUE

Where Excellence Connects With Modern Elegance



## +\$100 MILLION CAPITAL IMPROVEMENT PLAN

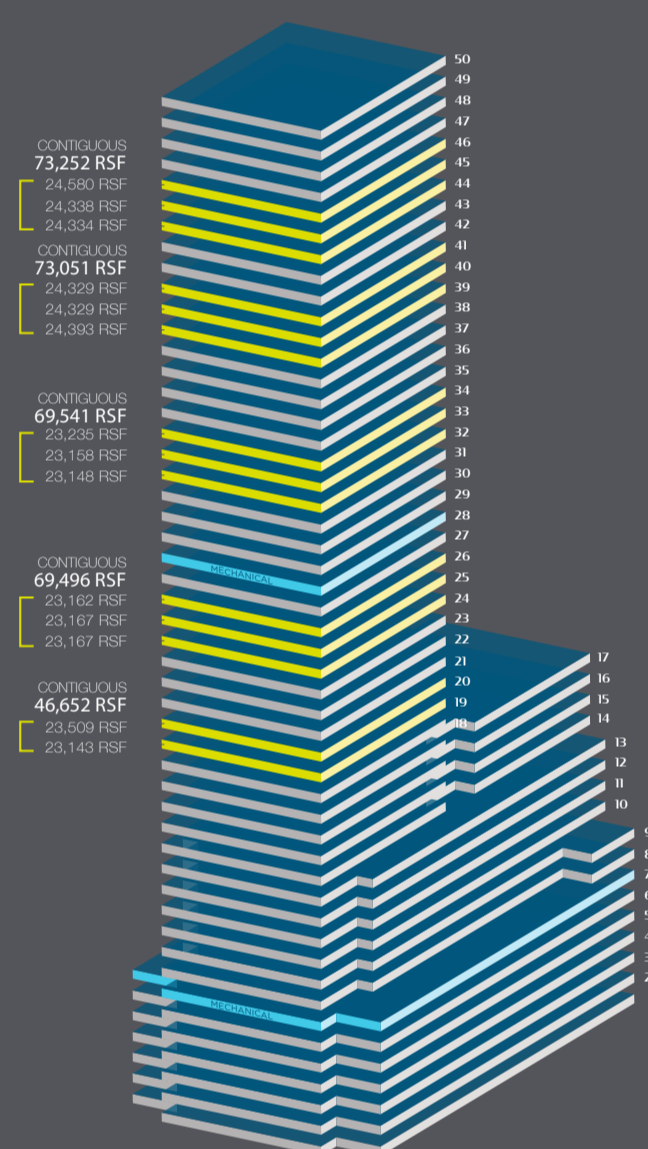


Newly expanded Park Avenue entry and lobby with 30' ceiling heights

### SPACE FEATURES

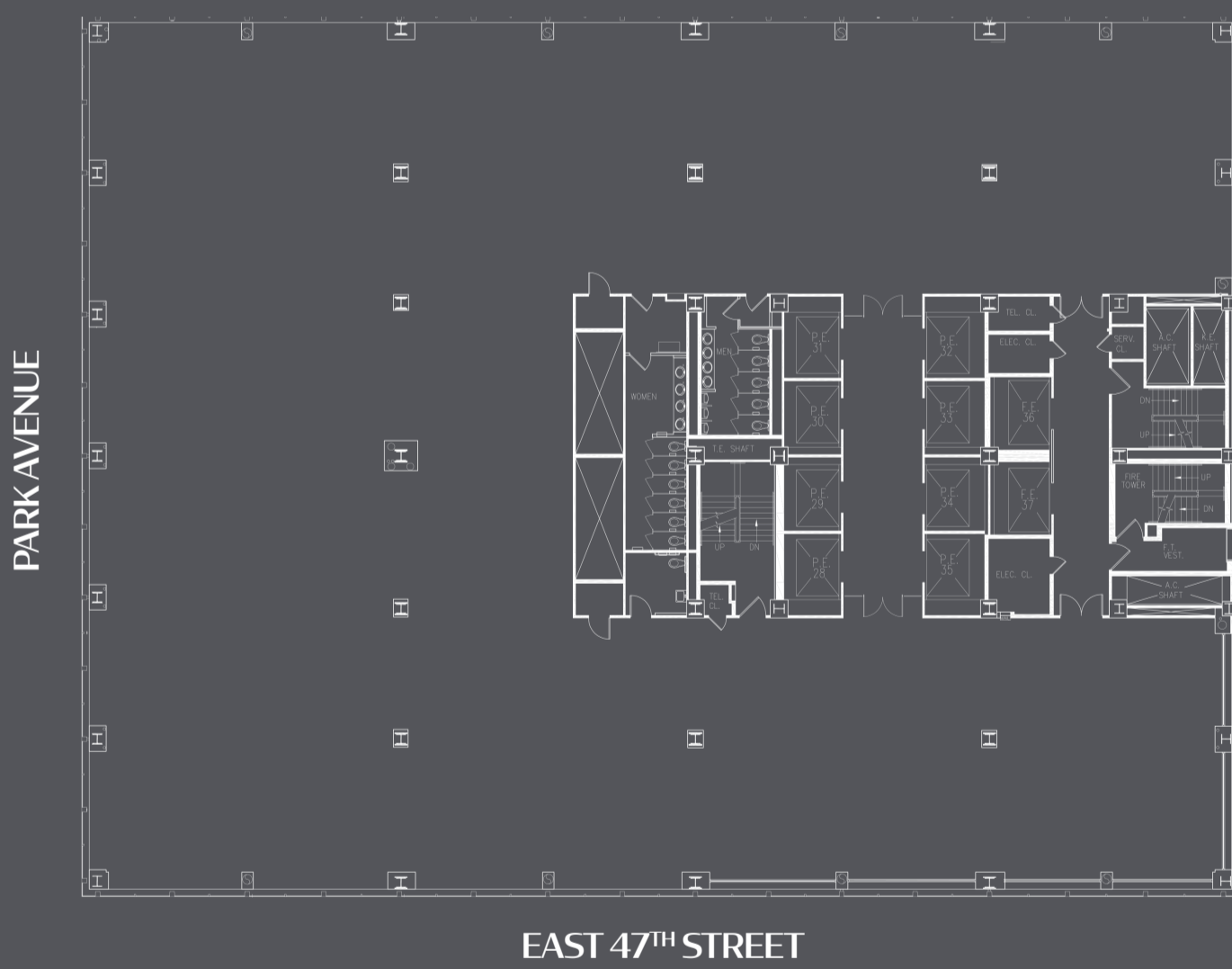
- › New expanded Park Avenue entry and lobby with 30' ceiling heights
- › New Park Avenue plaza with green space
- › New floor-to-ceiling lobby façade and reconfigured entrances on Park Avenue and Lexington Avenue
- › New destination dispatch elevators (mechanicals and cabs)
- › Tenant identification and custom messaging available on new, state-of-the-art media walls

## 300,000 SF AVAILABLE SPRING 2021



### TOWER CORE AND SHELL

### EAST 48<sup>TH</sup> STREET



### EAST 47<sup>TH</sup> STREET



Park Avenue lobby with state-of-the-art security access



Re-mastered Park Avenue lobby entrance and plaza



View of new plaza entrance complete with green space

For additional leasing information, please contact:

**MARK P. BOISI**  
212.318.9707  
mark.boisi@cushwake.com

**BRYAN BOISI**  
212.318.9756  
bryan.boisi@cushwake.com

**JIM FREDERICK**  
212.318.9777  
james.frederick@cushwake.com

**PETER OCCHI**  
212.318.9795  
peter.occhi@cushwake.com

[www.277-parkavenue.com](http://www.277-parkavenue.com)

