

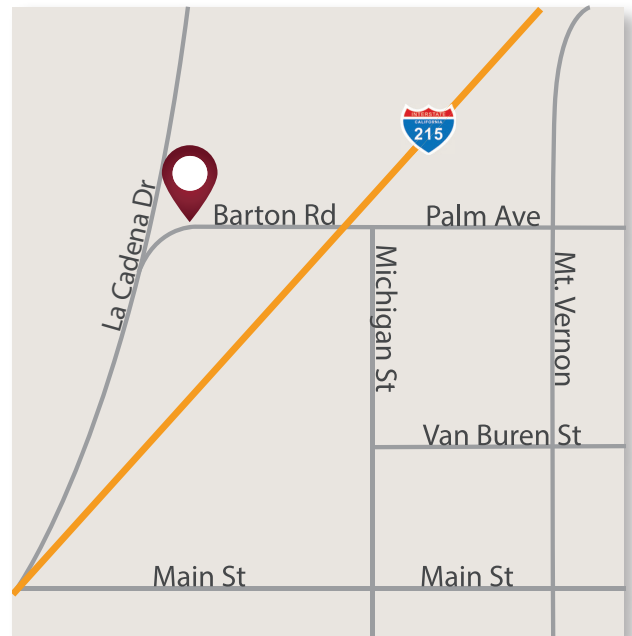
FORMER STATER BROS HEADQUARTERS FOR LEASE ±24,484 SF (DIVISIBLE)

21700 Barton Road - Colton, CA



Highlights

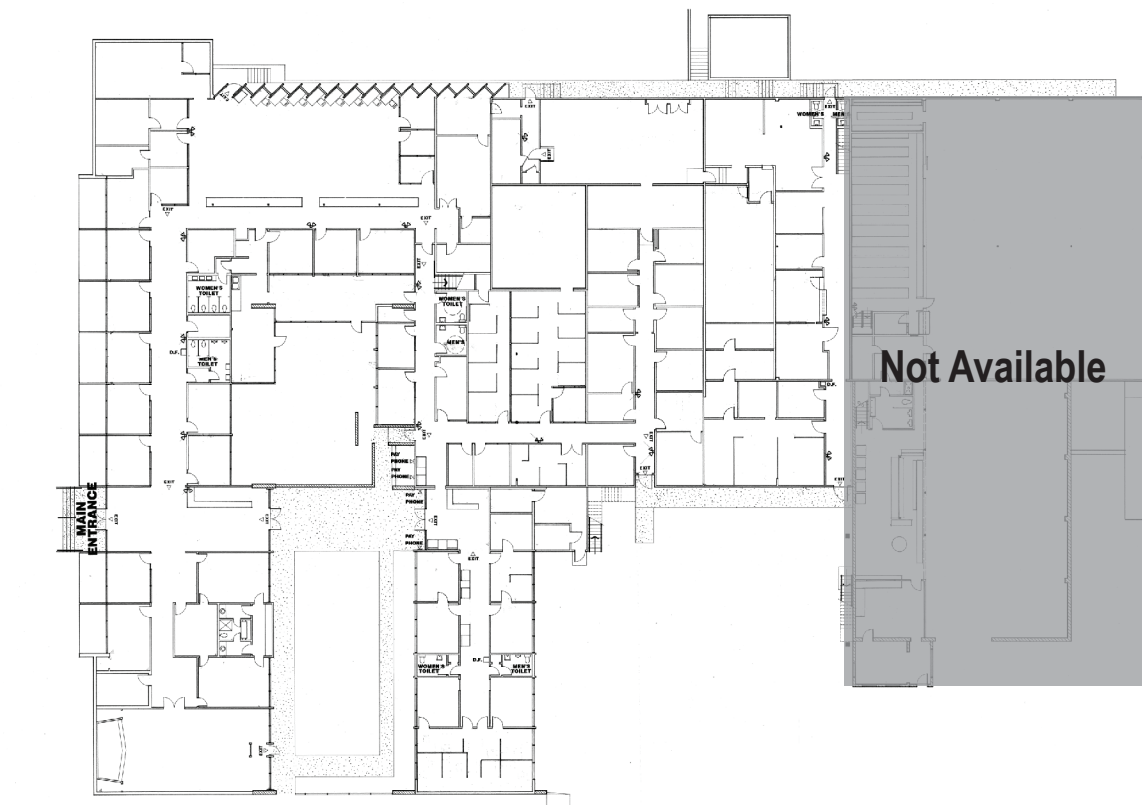
- ±24,484 SF Available, Divisible
- Abundant, Secure Parking
- Corporate-Image Lobby
- Multiple Interior Offices Framed in Glass
- Conference Rooms
- Kitchen and Employee Lounge
- Interior Courtyard
- Building Security Feature
- Sublease through 2023



DAVID MUDGE | 951.276.3611 | dmudge@lee-associates.com | BRE#: 01070762
LINDSAY MINGEE | 951.276.3622 | lmingee@lee-associates.com | BRE#: 01920658
REID SISSON | 951.276.3620 | rsisson@lee-associates.com | BRE#: 01981528

FORMER STATER BROS HEADQUARTERS FOR LEASE ±24,484 SF (DIVISIBLE)

21700 Barton Road - Colton, CA



1st Floor - Floor Plan



DAVID MUDGE | 951.276.3611 | dmudge@lee-associates.com | BRE#: 01070762
LINDSAY MINGEE | 951.276.3622 | lmingee@lee-associates.com | BRE#: 01920658
REID SISSON | 951.276.3620 | rsisson@lee-associates.com | BRE#: 01981528