

FOR SALE

2216 Boiling Springs Rd. Spartanburg, SC 29316

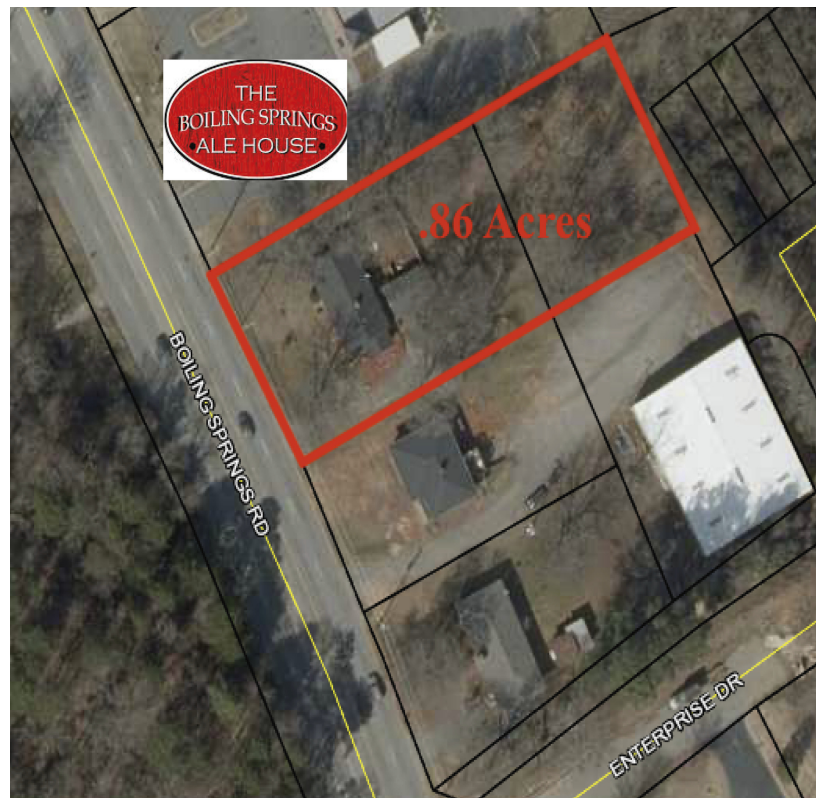
NAI Earle Furman

\$379,000



Redevelopment | 0.86 Acres

- 125' of frontage on Hwy 9
- Public water
- Sewer available in the back of the property
- Spartanburg County Tax Map: 2-51-03-037.00
- Less than 1 mile to I-85
- 30,300 VPD
- +/-6 miles from Downtown Spartanburg



James Dennis

O: +1 864 720 1665 x7728
C: +1 864 237 3640

jdennis@naiearlefurman.com



Charles "Cole" Morris

O: +1 864 398 4444
C: +1 864 680 0530

cmorris@naiearlefurman.com

No Warranty, Or Representation, Express Or Implied, Is Made As To The Accuracy Of The Information Contained Herein, And The Same Is Submitted Subject To Errors, Omissions, Change Of Price, Partial Or Other Conditions, Prior Sale, Lease Or Financing, Or Withdrawal Without Notice, And Of Any Special Listing Conditions Imposed By Our Principals. No Warranties Or Representations Are Made As To The Condition Of The Property Or Any Hazards Contained Therein Are Any To Be Implied.



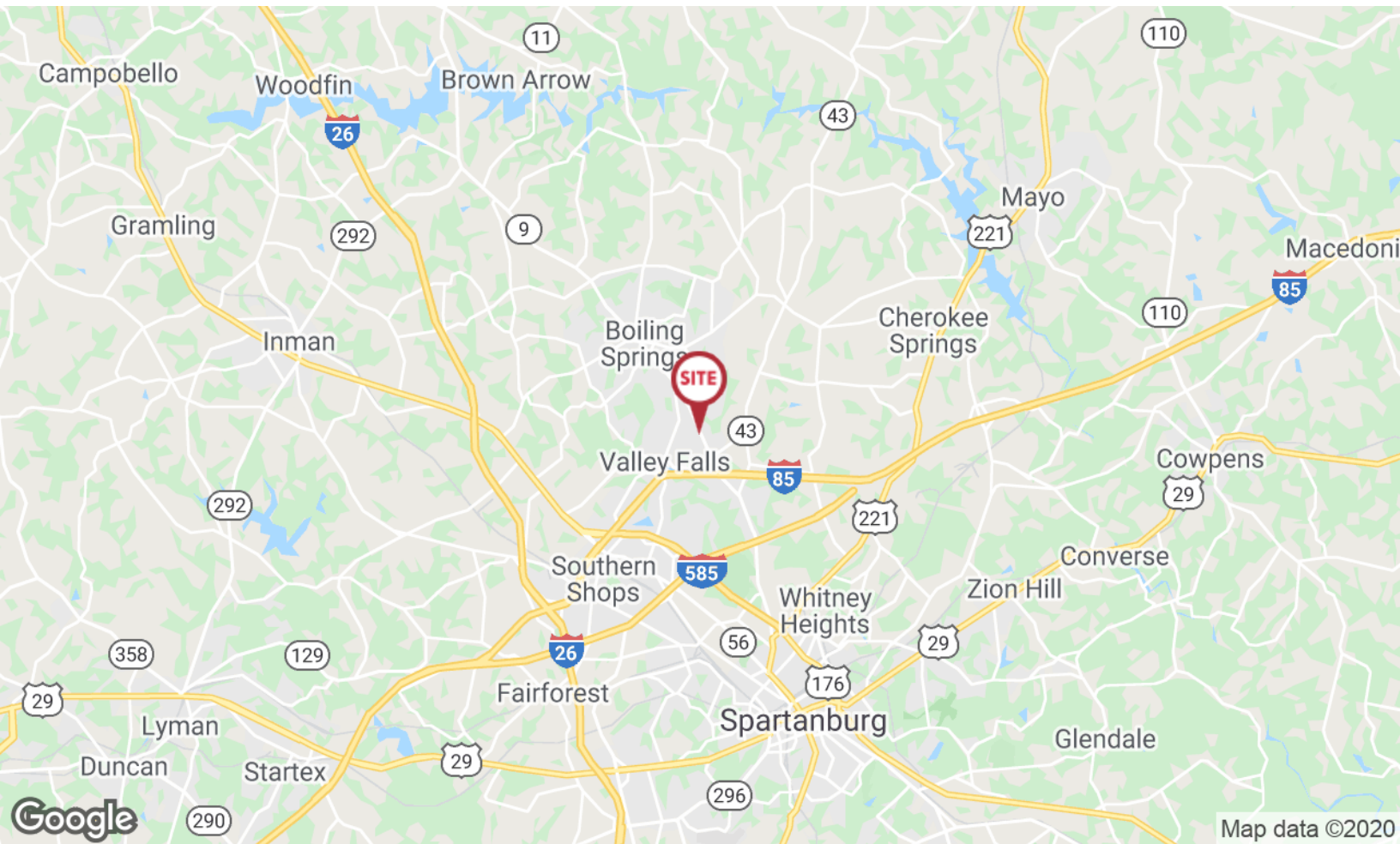
314 S Pine St.
Spartanburg, SC 29302
naief.com

FOR SALE

2216 Boiling Springs Rd. Spartanburg, SC 29316



Map data ©2020 Imagery ©2020, Maxar Technologies, U.S. Geological Survey, USDA Farm Service Agency



Map data ©2020

✉ **James Dennis**
O: +1 864 720 1665 x7728
C: +1 864 237 3640
jdennis@naiearlefurman.com

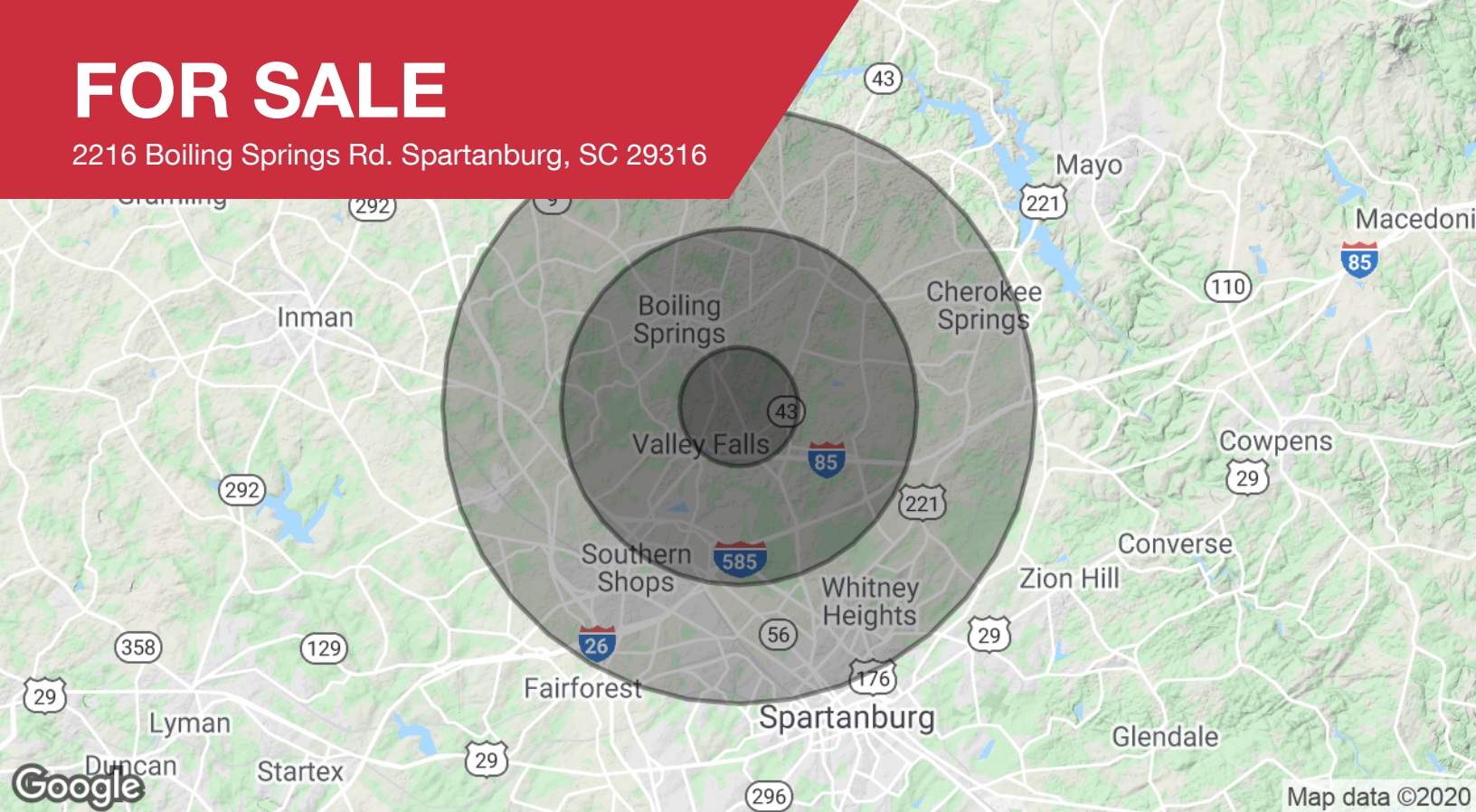
✉ **Charles "Cole" Morris**
O: +1 864 398 4444
C: +1 864 680 0530
cmorris@naiearlefurman.com

No Warranty Or Representation, Express Or Implied, Is Made As To The Accuracy Of The Information Contained Herein, And The Same Is Submitted Subject To Errors, Omissions, Change Of Price, Rental Or Other Conditions, Prior Sale, Lease Or Financing, Or Withdrawal Without Notice, And Of Any Special Listing Conditions Imposed By Our Principals No Warranties Or Representations Are Made As To The Condition Of The Property Or Any Hazards Contained Therein Are Any To Be Implied.

NAI Earle Furman

FOR SALE

2216 Boiling Springs Rd. Spartanburg, SC 29316



Population

	1 Mile	3 Miles	5 Miles
Total population	3,798	26,628	64,560
Median age	31.3	32.1	32.4
Median age (male)	31.8	32.4	32.4
Median age (Female)	30.8	31.9	32.5

Households & Income

	1 Mile	3 Miles	5 Miles
Total households	1,408	9,438	22,441
# of persons per HH	2.7	2.8	2.9
Average HH income	\$56,681	\$53,522	\$49,968
Average house value	\$144,427	\$139,090	\$138,169

* Demographic data derived from 2010 US Census

✉ **James Dennis**
O: +1 864 720 1665 x7728
C: +1 864 237 3640
jdennis@naiearlefurman.com

✉ **Charles "Cole" Morris**
O: +1 864 398 4444
C: +1 864 680 0530
cmorris@naiearlefurman.com

No Warranty Or Representation, Express Or Implied, Is Made As To The Accuracy Of The Information Contained Herein, And The Same Is Submitted Subject To Errors, Omissions, Change Of Price, Rental Or Other Conditions, Prior Sale, Lease Or Financing, Or Withdrawal Without Notice And Of Any Special Listing Conditions Imposed By Our Principals No Warranties Or Representations Are Made As To The Condition Of The Property Or Any Hazards Contained Therein Are Any To Be Implied.

NAI Earle Furman