

9741 JOSEPH CAMPAU STREET  
HAMTRAMCK, MICHIGAN

INVESTMENT SALE – MULTI-USE  
12,338 Square Feet



**SIGNATURE  
ASSOCIATES**  
KNOW SIGNATURE | KNOW RESULTS

**GREAT MULTI-USE PROPERTY**



## PROPERTY FEATURES

- 12,338 square foot property
- Zoned CBD
- Built in 1920
- 3-story building
- 10 apartment units with 4 additional commercial tenants
- Please contact broker for more details
- Sale Price: \$1,775,000



For more information, please contact:

**PETER VANDERKAAY**  
(248) 359 3837  
pvanderkaay@signatureassociates.com

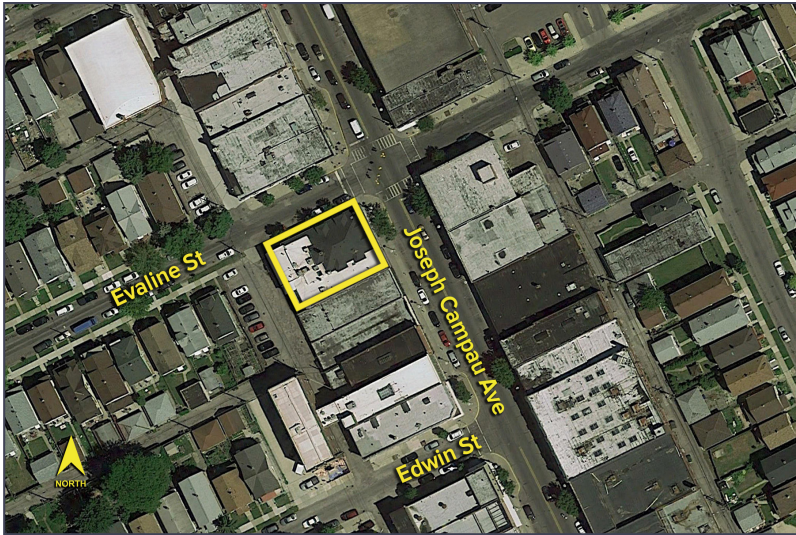
**SIGNATURE ASSOCIATES**  
One Towne Square, Suite 1200  
Southfield, MI 48076  
www.signatureassociates.com



# 9741 Joseph Campau – Hamtramck, Michigan

## Investment Sale – Multi-Use Property

12,338  
Square Feet  
AVAILABLE

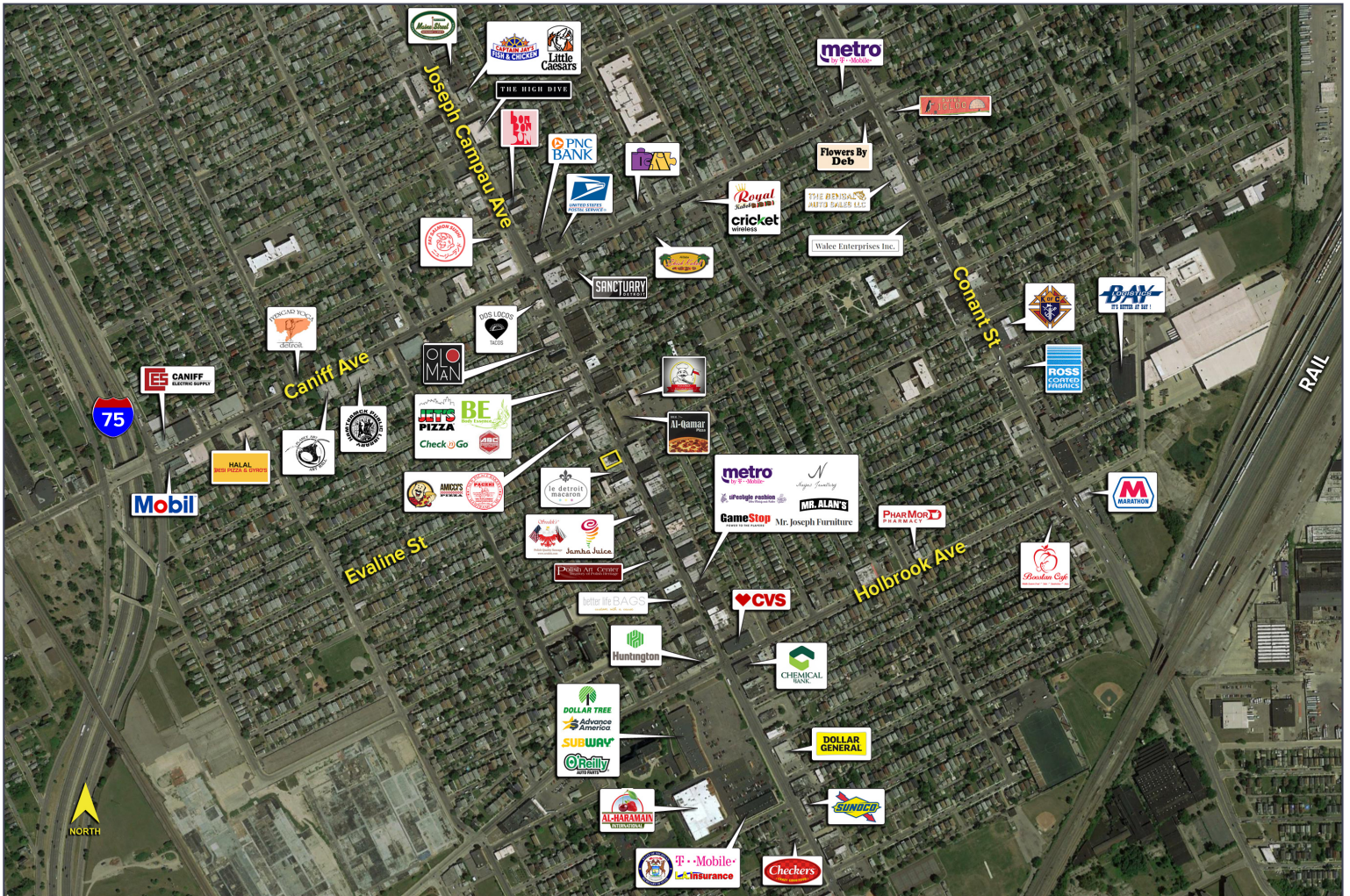


### DEMOGRAPHICS

	POPULATION	MED. HH INCOME
1 MILE	27,728	\$29,400
3 MILE	118,517	\$27,713
5 MILE	350,935	\$31,701

### TRAFFIC COUNTS (TWO-WAY)

17,469	Joseph Campau Ave. E. of Caniff St. 2-Way
16,415	Caniff St. N. of Joseph Campau Ave. 2-Way
15,026	Caniff St. S. of Joseph Campau Ave. 2-Way



For more information, please contact:

**PETER VANDERKAAY**  
(248) 359 3837  
pvanderkaay@signatureassociates.com

**SIGNATURE ASSOCIATES**  
One Towne Square, Suite 1200  
Southfield, MI 48076  
www.signatureassociates.com

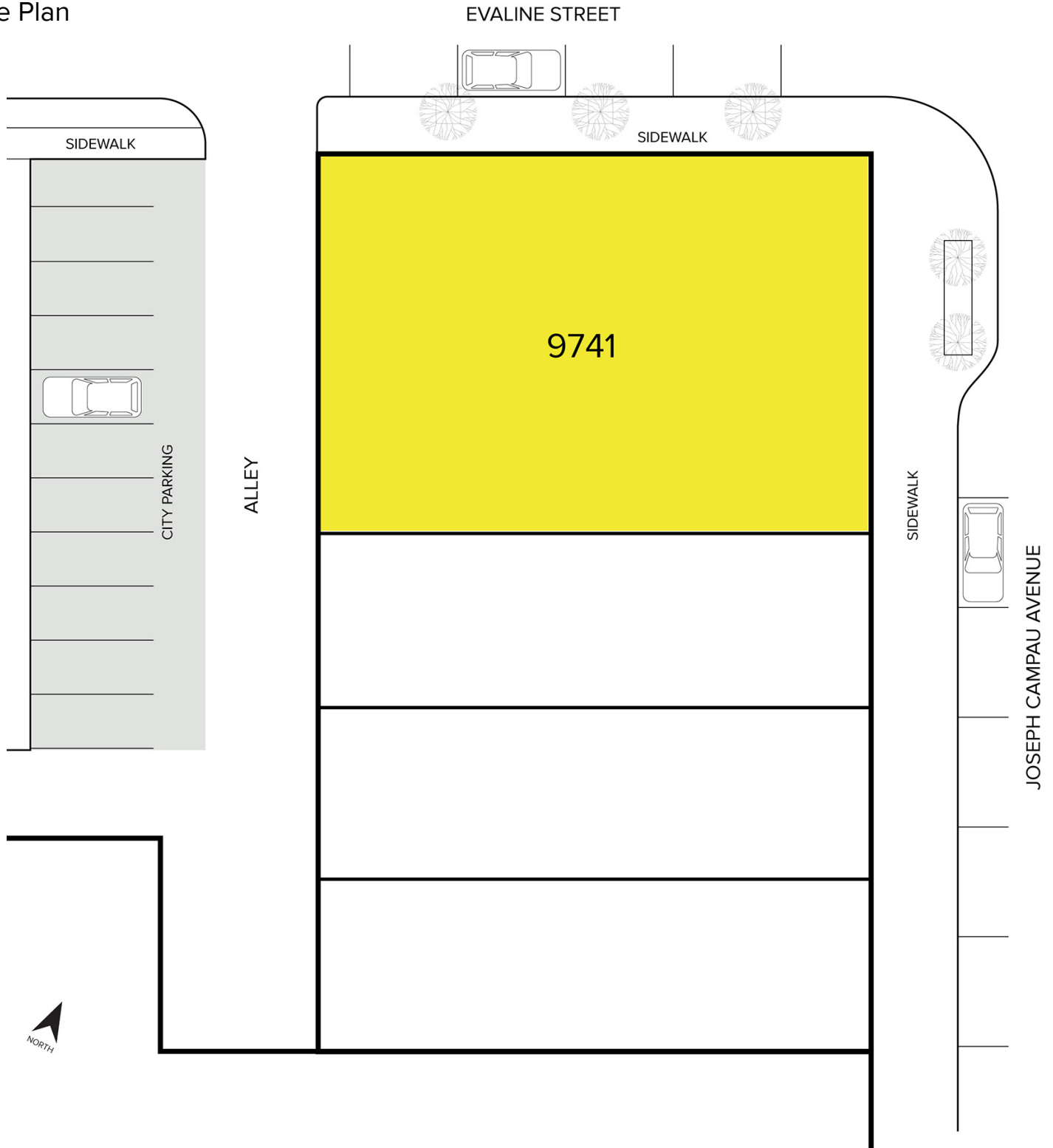


# 9741 Joseph Campau – Hamtramck, Michigan

## Investment Sale – Multi-Use Property

12,338  
Square Feet  
AVAILABLE

### Site Plan



For more information, please contact:

**PETER VANDERKAAY**  
(248) 359 3837  
pvanderkaay@signatureassociates.com

**SIGNATURE ASSOCIATES**  
One Towne Square, Suite 1200  
Southfield, MI 48076  
www.signatureassociates.com