

FOR LEASE > INDUSTRIAL SPACE

Oceanic Business Park



3803 OCEANIC DRIVE, SUITE 201, OCEANSIDE, CA 92054



Building Amenities

- > Approximately 6,073 SF industrial suite
- > Office area includes a reception area, 5 offices, lunch room, server room and 2 restrooms
- > 2 grade level doors
- > Power: 600 amps, 120/208 volt
- > Clear height: 20' minimum
- > Parking: 16 spaces
- > Great corner location with good visibility
- > Close to commuter rail line, new retail center and hotel services



Lease Rate

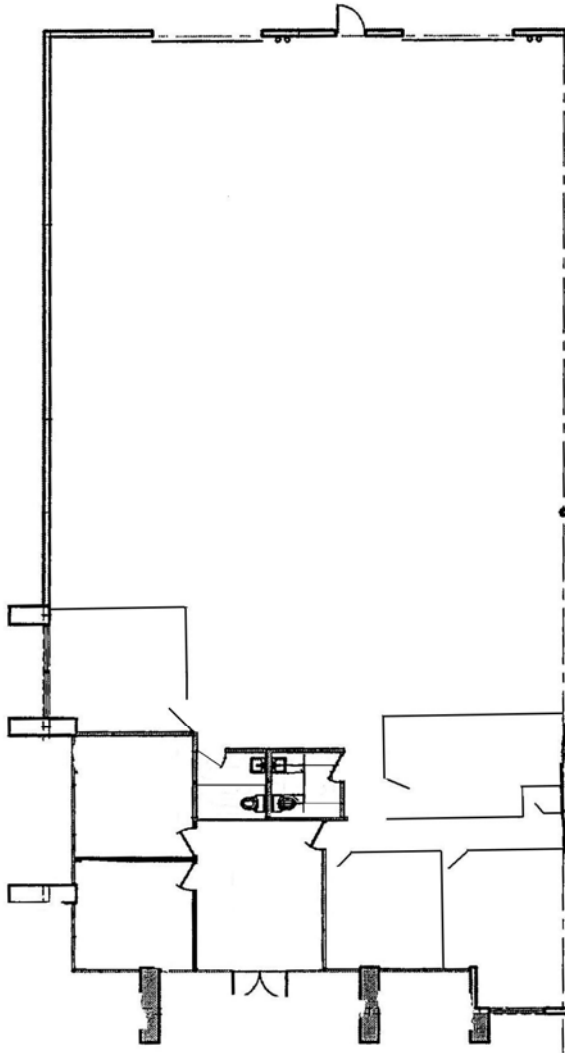
- > \$0.98 / SF Modified Gross
CAM = \$.05/SF/Month
- > Available July 1, 2016

JOE CROTTY
760 930 7906
CARLSBAD, CA
joe.crotty@colliers.com
Lic# 01369821

JOSH MCFADYEN
760 930 7945
CARLSBAD, CA
josh.mcfadyen@colliers.com
Lic# 01255566

COLLIERS INTERNATIONAL
5901 Priestly Drive, Suite 100
Carlsbad, CA 92008
www.colliers.com/carlsbad

Oceanic Business Park > Floor Plan



FLOOR PLAN
6,073 SF



Contact Us

JOE CROTTY
760 930 7906
CARLSBAD, CA
joe.crotty@colliers.com
Lic# 01369821

JOSH MCFADYEN
760 930 7945
CARLSBAD, CA
josh.mcfadyen@colliers.com
Lic# 01255566

COLLIERS INTERNATIONAL
5901 Priestly Drive, Suite 100
Carlsbad, CA 92008
www.colliers.com/carlsbad

This document has been prepared by Colliers International for advertising and general information only. Colliers International makes no guarantees, representations or warranties of any kind, expressed or implied, regarding the information including, but not limited to, warranties of content, accuracy and reliability. Any interested party should undertake their own inquiries as to the accuracy of the information. Colliers International excludes unequivocally all inferred or implied terms, conditions and warranties arising out of this document and excludes all liability for loss and damages arising there from. Colliers International is a worldwide affiliation of independently owned and operated companies.

