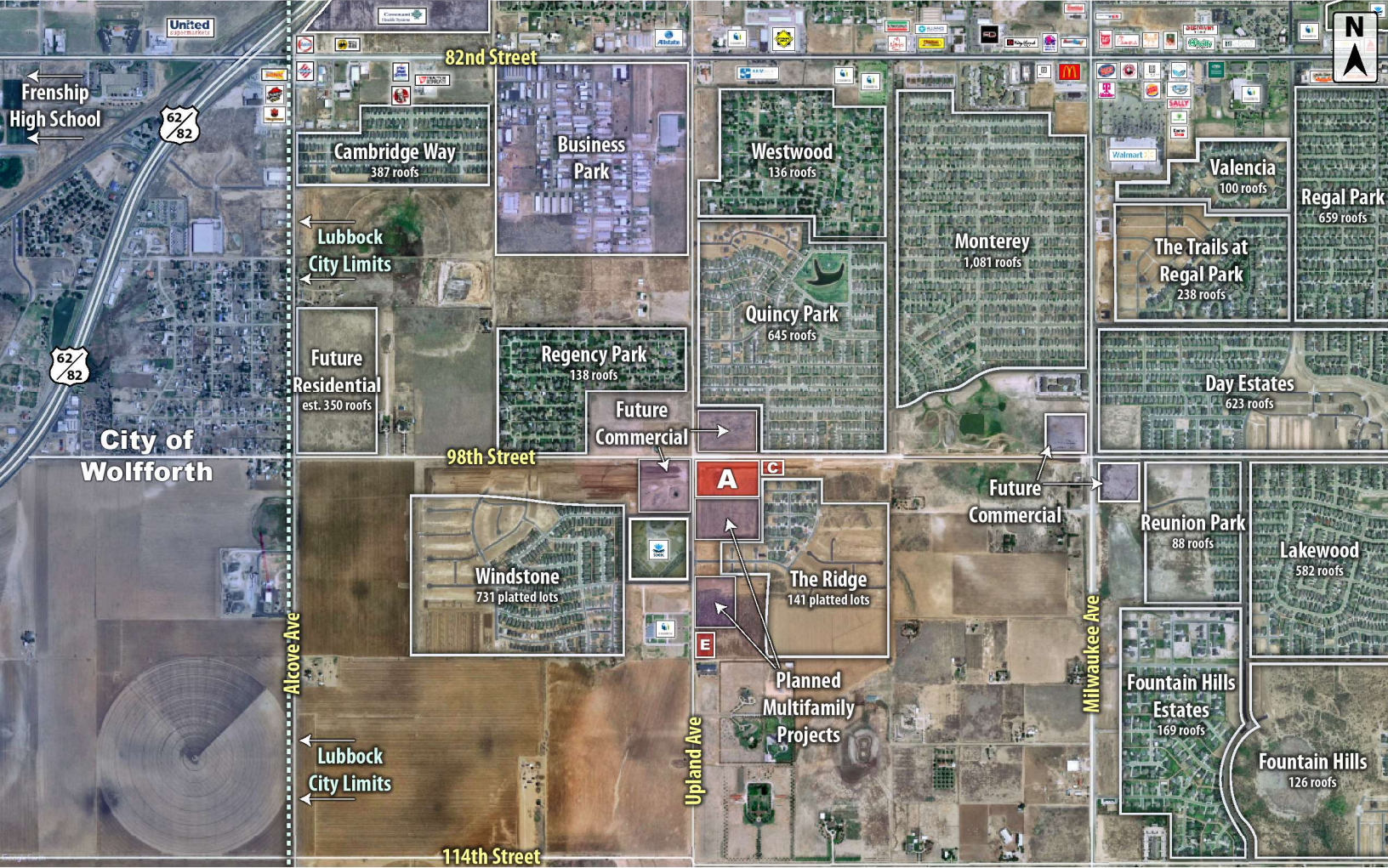




# SEC 98TH STREET & UPLAND AVENUE

Lubbock, TX 79424

# LAND



## QUICK FACTS



PURCHASE PRICE

**\$3.25 - \$4.25 per SF**



TOTAL ACREAGE

**15+ AC**



ZONING

**Commercial**

CBCWORLDWIDE.COM

Rick Canup, CCIM

806.438.8118

RCanup@CBCWorldwide.com

Beau Tucker, CCIM

806.470.3944

BTucker@CBCWorldwide.com



**COLDWELL  
BANKER  
COMMERCIAL**

CAPITAL ADVISORS



## Trade Area & Information



## LOCATION

Located in southwest Lubbock in the southeast quadrant of 98th Street and Upland Avenue.

## DESCRIPTION

Multiple tracts of land in developing southwest Lubbock located in the Frenship Independent School District (FISD). Upland Heights Elementary School which was built in 2017 and is FISD's 8th and newest elementary school is in the immediate area. The Milwaukee Corridor which is a two-mile stretch of over 100 retailers and businesses begins only 1-mile to the northeast to include Walmart, Target, PetSmart, Burlington and many more.

Transitional - Property has not been zoned.  
Properties are not in the floodplain.

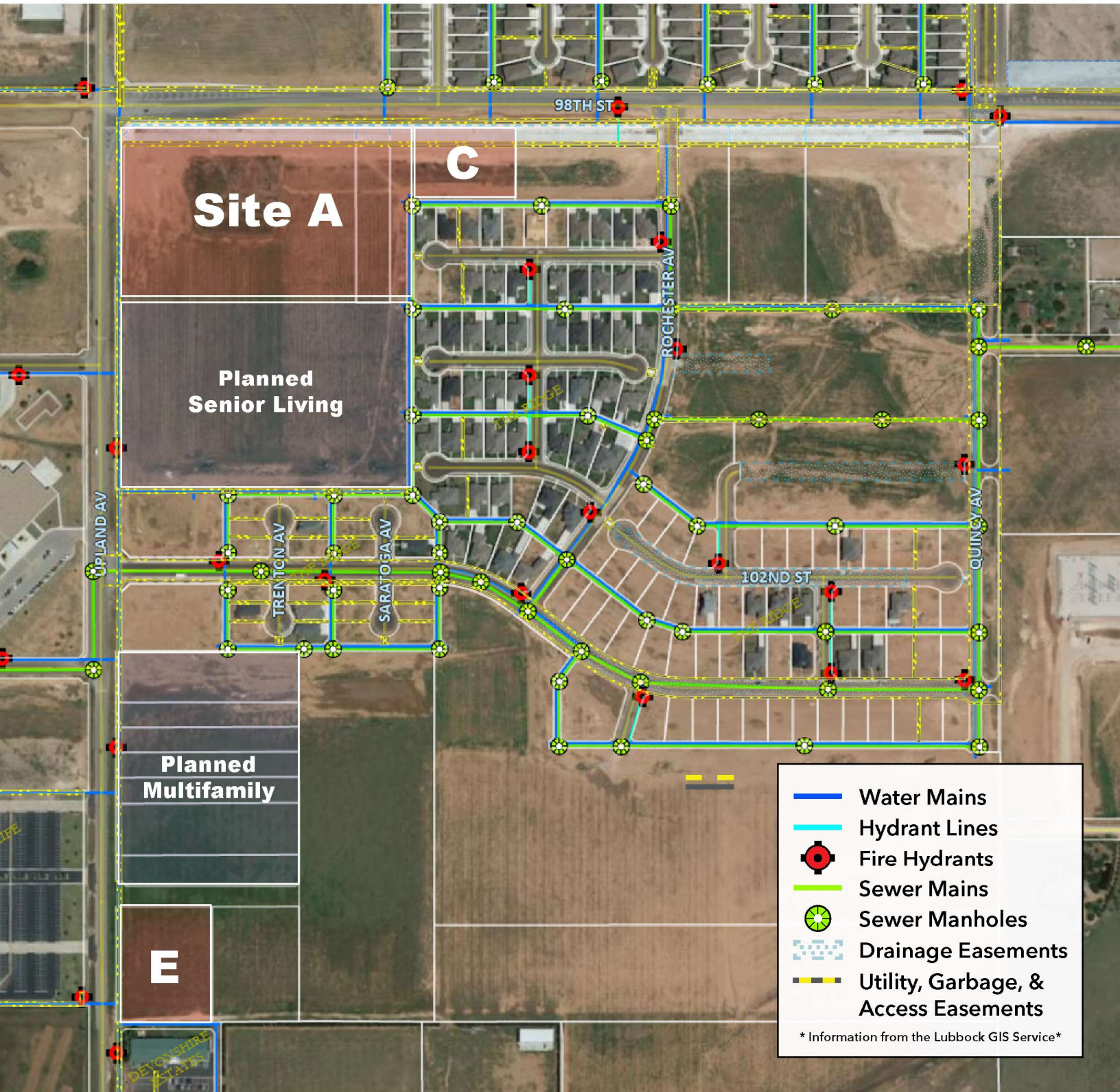
## OPTIONS








- Tract A - 10.85 Acres - \$3.75 per square foot
- Tract B - 10.95 Acres - Developing Senior Living
- Tract C - 1.67 Acres - \$4.25 per square foot
- Tract D - 8.99 Acres - Developing Multifamily
- Tract E - 2.51 Acres - \$3.25 per square foot





# Utilities & Easements

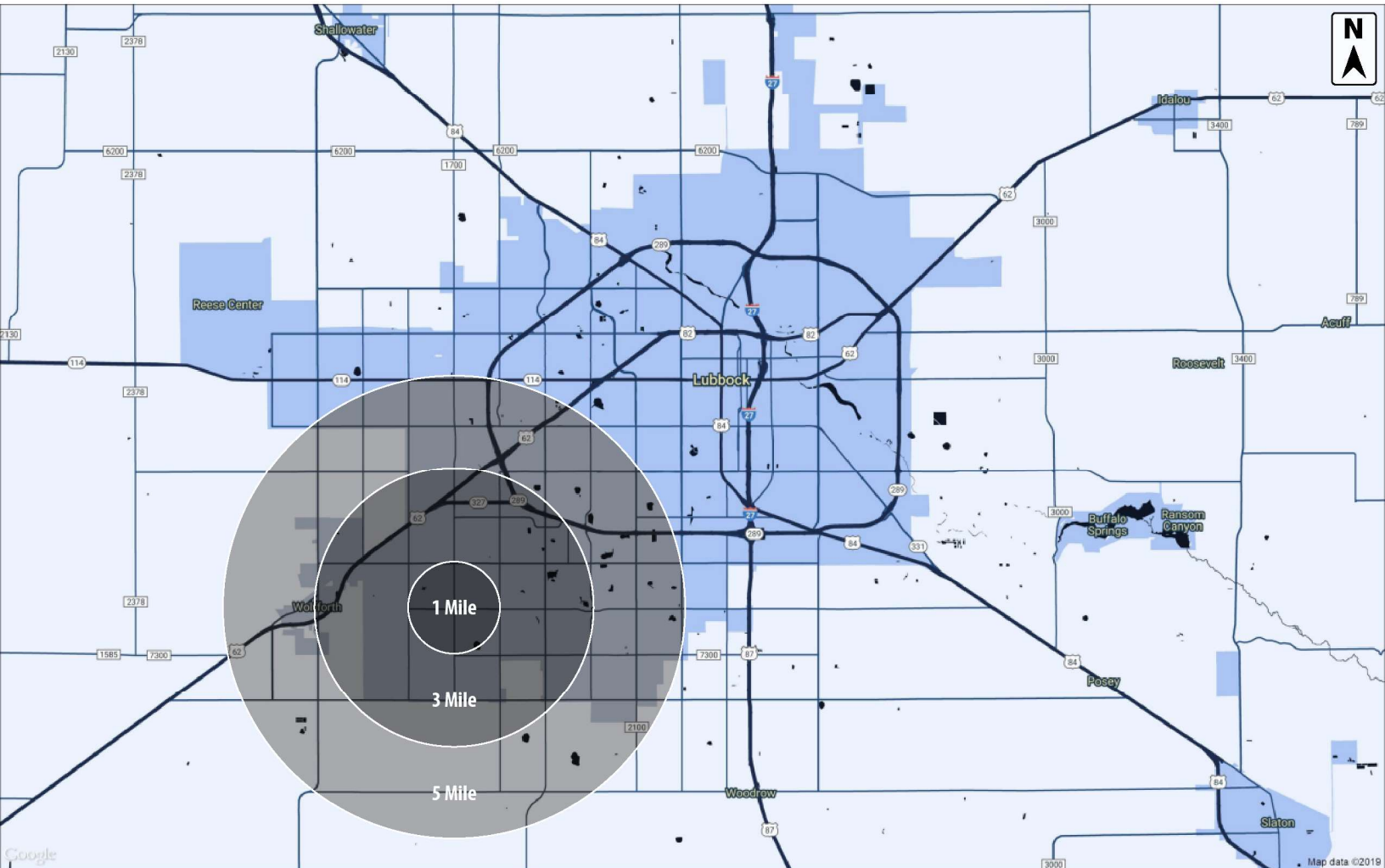


-  Water Mains
-  Hydrant Lines
-  Fire Hydrants
-  Sewer Mains
-  Sewer Manholes
-  Drainage Easements
-  Utility, Garbage, & Access Easements

\* Information from the Lubbock GIS Service\*



## Demographics



### POPULATION

	1 MILE	3 MILES	5 MILES
TOTAL POPULATION	3,299	21,532	68,393
MEDIAN AGE	33.4	36.0	34.5
MEDIAN AGE (MALE)	33.7	35.1	33.5
MEDIAN AGE (FEMALE)	32.9	36.4	35.6

### HOUSEHOLDS & INCOME

	1 MILE	3 MILES	5 MILES
TOTAL HOUSEHOLDS	1,096	8,178	28,229
# OF PERSONS PER HH	3.0	2.6	2.4
AVERAGE HH INCOME	\$104,597	\$85,383	\$77,015
AVERAGE HOUSE VALUE	\$199,680	\$177,394	\$156,509

CBCWORLDWIDE.COM

Coldwell Banker Commercial  
 Capital Advisors  
 4918 S. Loop 289  
 Lubbock, TX 79414

©2020 Coldwell Banker Real Estate LLC, dba Coldwell Banker Commercial Capital Advisors. All rights reserved. Coldwell Banker Commercial® and the Coldwell Banker Commercial are registered service marks owned by Coldwell Banker Real Estate LLC. Coldwell Banker Real Estate LLC, dba Coldwell Banker Commercial Affiliates fully supports the principles of the Fair Housing Act and the Equal Opportunity Act. Each office is independently owned and operated. The information provided is deemed reliable, but it is not guaranteed to be accurate or complete, and it should not be relied upon as such. This information should be independently verified before any person enters into a transaction based upon it.



**COLDWELL  
 BANKER  
 COMMERCIAL**

**CAPITAL ADVISORS**