



1330

CONNECTICUT



1330CONNECTICUT

Located in the "Golden Triangle" of the Central Business District, 1330 Connecticut Avenue occupies the northeast corner of 19th and N Streets, NW. Just south of Dupont Circle and immediately adjacent to the entrance to Dupont Circle Metrorail station, the building offers easy access for all modes of commuter transportation. The entrance on Connecticut Avenue leads to numerous retail and hotel amenities while the entrance on 19th Street leads to a neighborhood that includes some of DC's most popular restaurants - offering a true "24-7 environment".

This 10-story Class A office building features an underground parking garage.



BUILDING AMENITIES



Fully Renovated /
LEED Silver



98 Walking Score



At Dupont Metro
(Red Line)



2,500 SF
Fitness Center



Onsite Property
Management



Onsite Day Care



Green Walls
Throughout Lobby



Entire Building
Cell Phone Booster
(including garage)



Bike Storage



Car Charging
Stations

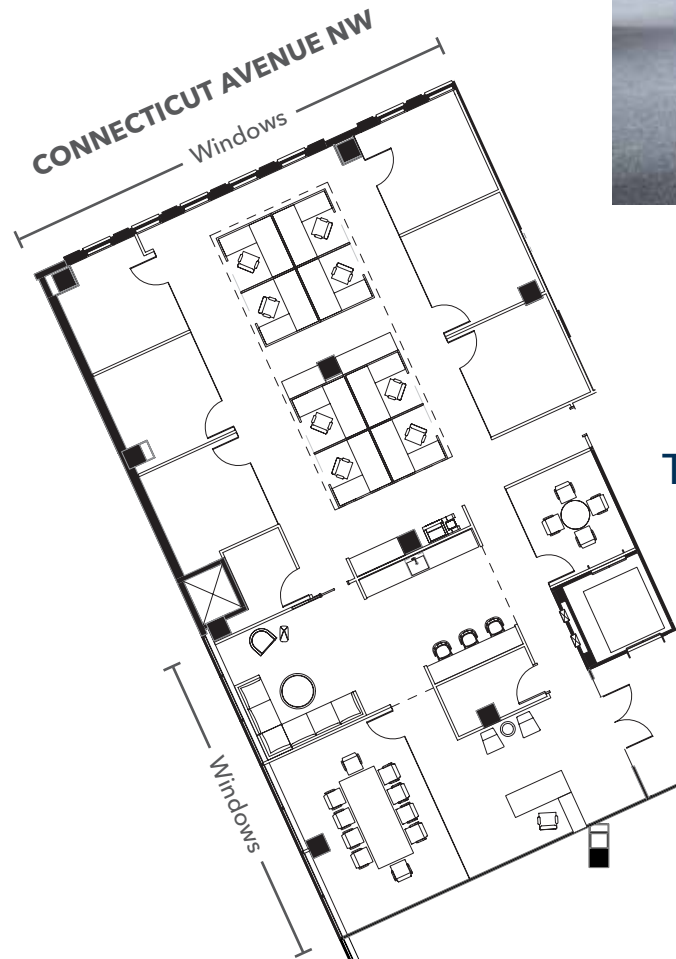




Unique living plant walls encourage health & bring nature into the building's interior.

AVAILABLE NOW!

4,017 – 23,734 SF
of leasing opportunities

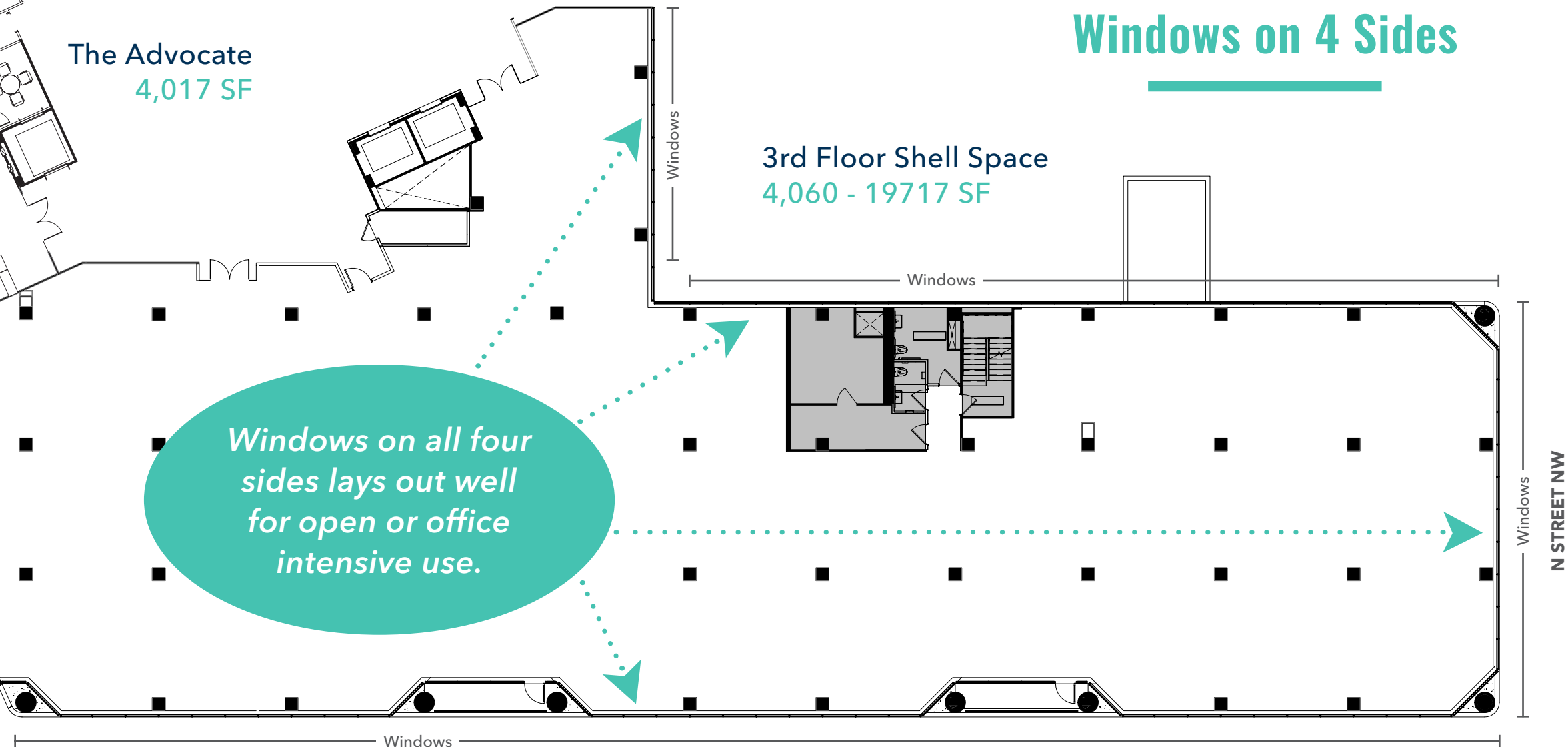


The Advocate
4,017 SF

Windows on 4 Sides

3rd Floor Shell Space
4,060 - 19717 SF

Windows on all four
sides lays out well
for open or office
intensive use.



19TH STREET NW



1330
CONNECTICUT

bxp Boston
Properties



TRANSWESTERN®

FOR MORE INFORMATION

Pete Prominski
202.775.7005
peter.prominski@transwestern.com

Tom Hilley
202.775.7008
tom.hilley@transwestern.com

Scott Fetterolf
202.775.7012
scott.fetterolf@transwestern.com

1717 K Street, NW, Suite 1000, Washington, D.C. 20006
202.775.7000
transwestern.com