

Centrally Located Office Building

For Lease \$20 Gross

635 SE 10th St. #4
Deerfield Beach, FL 33441



FOR LEASE	Suite 4B approx. 900 RSF		
DESCRIPTION	Well Maintained office suite for Lease located in Duval Court Professional Centre Condo. Space includes a bathroom and small sink area. Windows on both sides to allow natural light.		
LOCATION	Located in Duval Court Centre at the Northwest Corner of Federal Hwy and SE 10 th Street.		
PARKING/ YEAR BUILT	Common Parking Within Plaza Built in 1964.		
PRICING	Lease rate is \$20 Gross. Tenant pays own electric.		
ZONING/FOLIO	B1 4843-06-AM-0090		
DEMOGRAPHICS 2017 ESTIMATES		1 mile	3 mile
	HH Population:	7,324	47,986
	Average HH Income:	\$69,374	\$75,989
			5 mile
			97,656
			\$76,106

1233 E. Hillsboro Blvd
Deerfield Beach, FL
33441

954.427.8686 T.
954.427.0117 F.

CAMPBELL & ROSEMURGY
COMMERCIAL REAL ESTATE

Paulina Kucharska

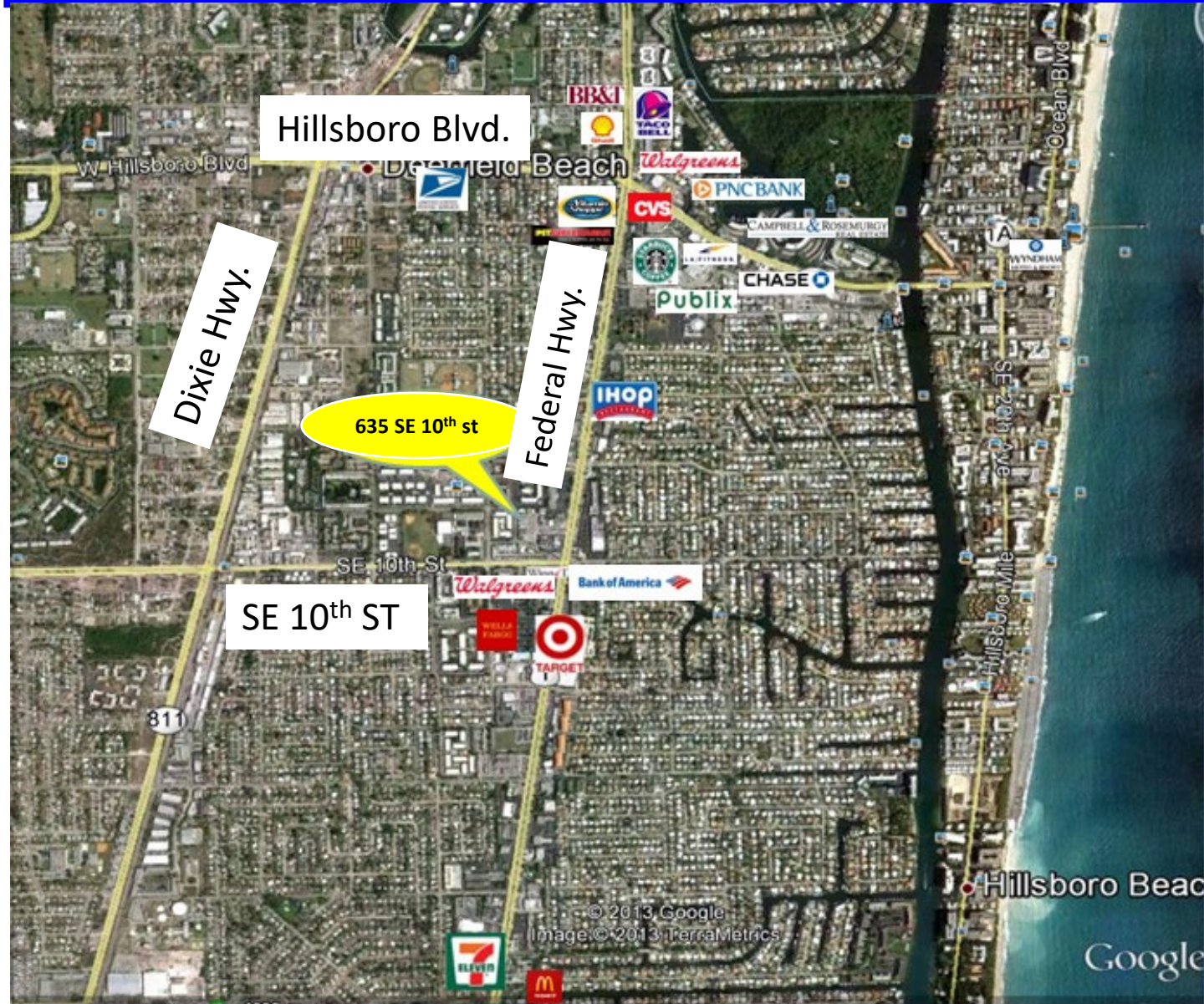
718.593.9631

pkagentfl@gmail.com

Centrally Located Office Building

For Lease \$20 Gross

635 SE 10th St. #4
Deerfield Beach, FL 33441



CAMPBELL & ROSEMURGY COMMERCIAL REAL ESTATE

Paulina Kucharska

1233 E. Hillsboro Blvd
Deerfield Beach, FL
33441

954.427.8686 T.
954.427.0117 F.

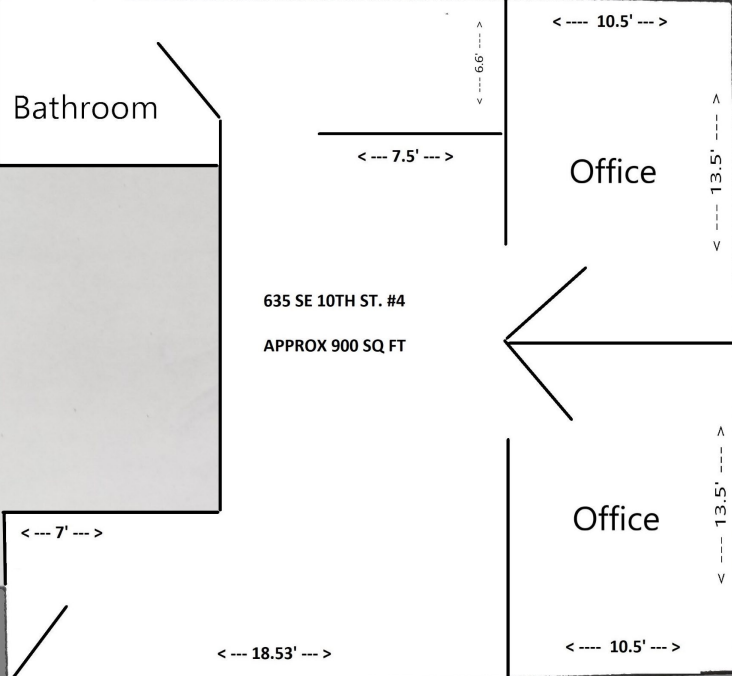
We obtained the information above from sources we believe to be reliable, but we have not verified its accuracy and make no guarantee, warranty or representation about it. It is authorized subject to the possibility of errors, omissions, change of price, rental or other conditions, prior sale, lease or financing, or withdrawal without notice. We include professions, opinions, assumptions or estimates for example only, and they may not represent current or future performance. **pkagentfl@gmail.com** should conduct your own investigation of the property and transaction.

718.593.9631

Centrally Located Office Building

For Lease \$20 Gross

**635 SE 10th St. #4
Deerfield Beach, FL 33441**



CAMPBELL & ROSEMURGY
COMMERCIAL REAL ESTATE

Paulina Kucharska

1233 E. Hillsboro Blvd
Deerfield Beach, FL
33441

954.427.8686 T.
954.427.0117 F.

718.593.9631

We obtained the information above from sources we believe to be reliable, but we have not verified its accuracy and make no guarantee, warranty or representation about it. It is submitted subject to the possibility of errors, omissions, change of price, rental or other conditions, prior sale, lease or financing, or withdrawal without notice. We make no warranties, opinions, assumptions or estimates for example only, and they may not represent current or future performance. You should conduct your own investigation of the property and transaction.

pkagentfl@gmail.com

Campbell and Rosemurgy Real Estate is a licensed Real Estate Broker. This offering is subject to errors, omissions, prior sale or withdrawal without notice. Any reliance on this information is solely at your own risk.