

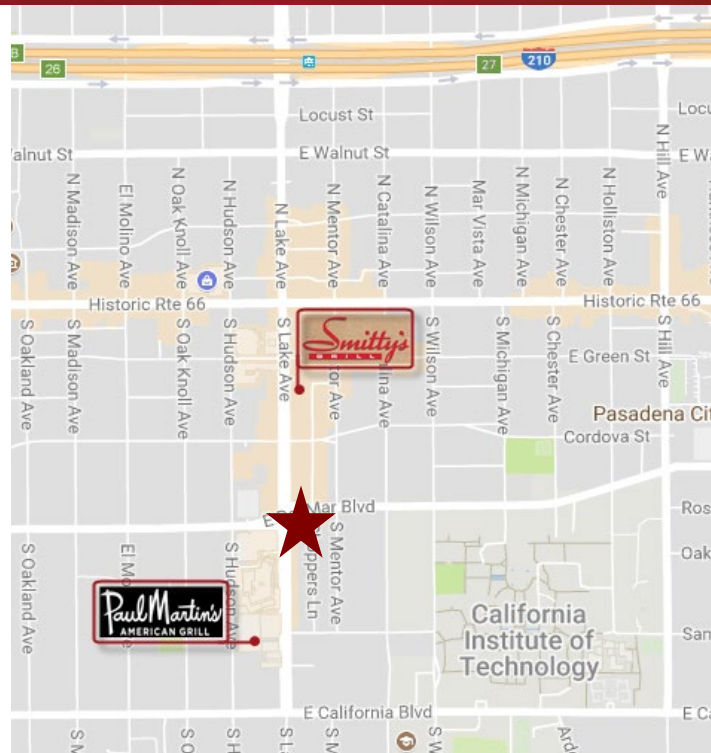
FOR LEASE

LAKE CORDOVA BUILDING



200-202 S. LAKE AVENUE, PASADENA, CA

- AVAILABLE SPACE:** Suite 301 – Approx. 672 RSF.
Suite 330 – Approx. 803 RSF.
(Open space, one (1) office, conference room and storage area.)
- LEASE RATE:** \$3.30 per sq. ft., Full Service Gross.
- AVAILABLE:** Suite 301 – August 1, 2020.
Suite 330 – May 1, 2020.
- YEAR BUILT:** 1961. Renovated in 2016.
- PARKING:** Accessible to City controlled lot behind building at \$75 per space per month. Parking available at Corporate Center parking structure across the street at \$95 unreserved and \$140 reserved per space per month.
- AMENITIES:**
- * Renovated Mid-Century Modern Office Building.
 - * Heart of South Lake District, walk to Macys, VeggieGrill, Granville, Paul Martin, Smitty's, Nick's Mercado, Lemonade, Sugarfish, SoulCycle
 - * Easy access to Goldline Station, All Freeways.
 - * Building Wifi connectivity provided by Charter Communications.



For more Information, Contact:

Dan Alle

Carole Walker

dalle@redstonecre.com

cwalker@redstonecre.com

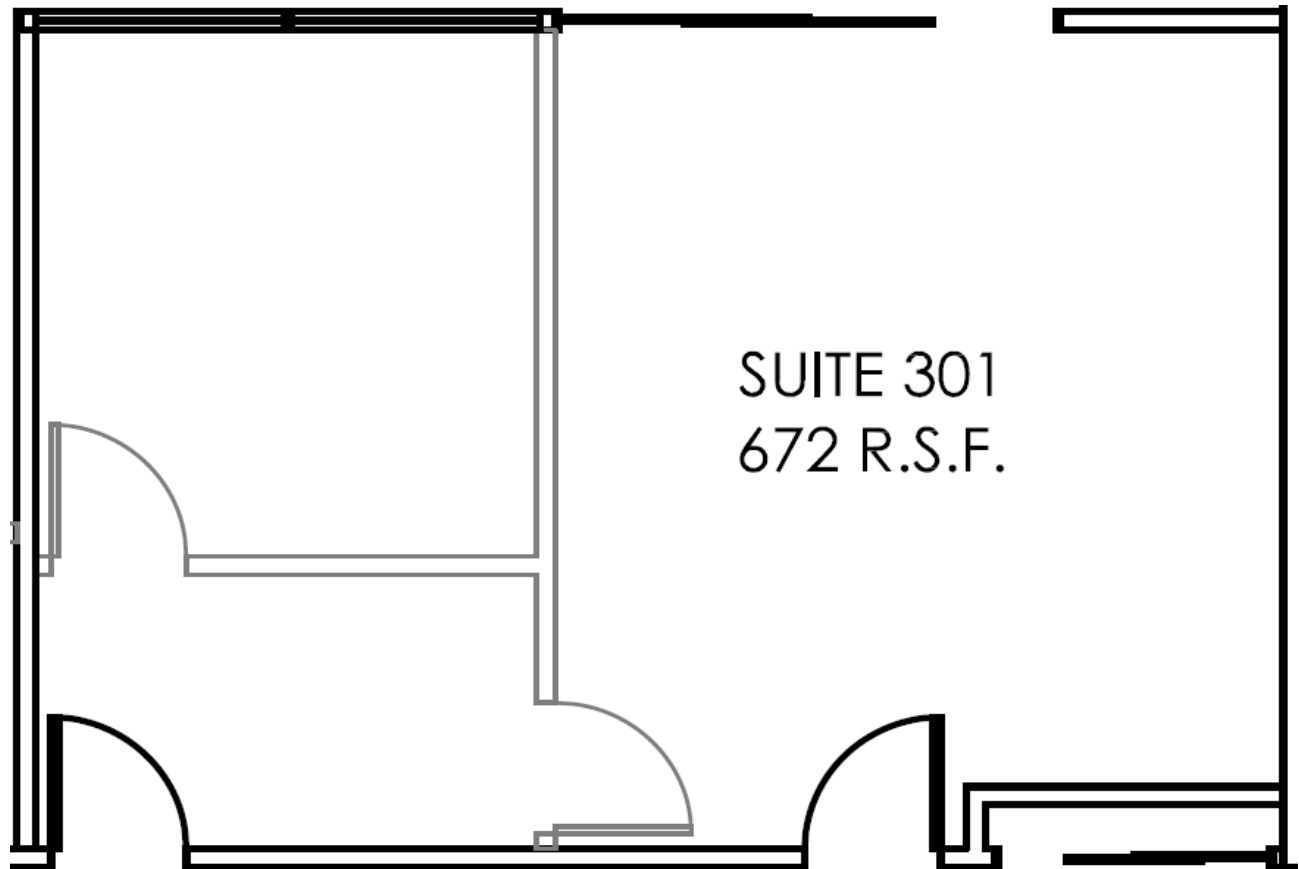
Lic. # No. 01017941

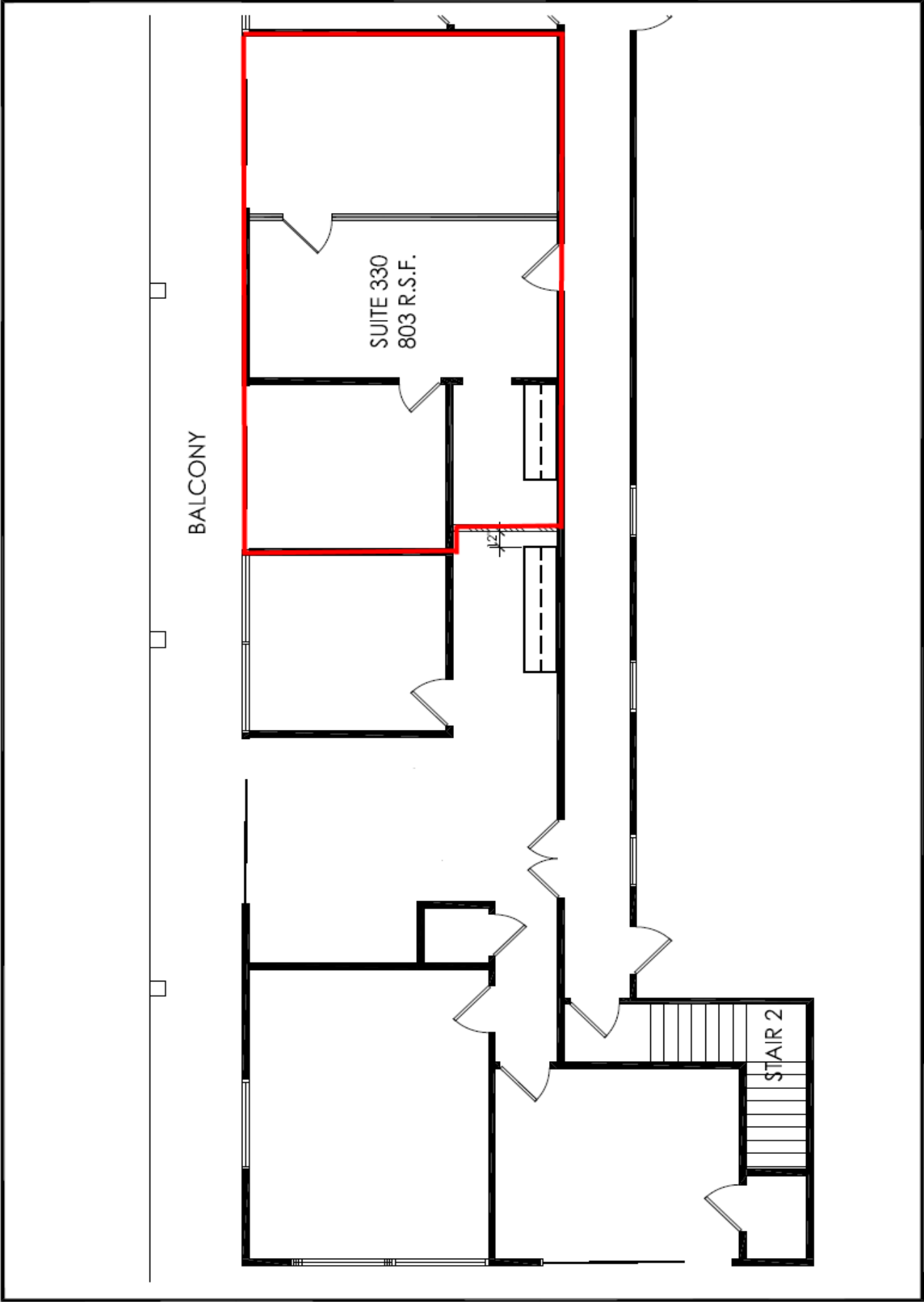
Lic. # No. 01525534

(626) 795-2255



All information contained herein is from sources deemed reliable but has not been verified and is submitted without any warranty or representation, expressed or implied, as to its accuracy, and Redstone Commercial Real Estate, License #01525534, assumes no liability for errors or omissions of any kind, change of price, rental or other conditions, including, without limitation, prior sale, lease or financing or withdrawal without notice. This presentation is for information only and under no circumstances whatsoever is to be deemed a contract, note, memorandum or any other form of binding commitment.





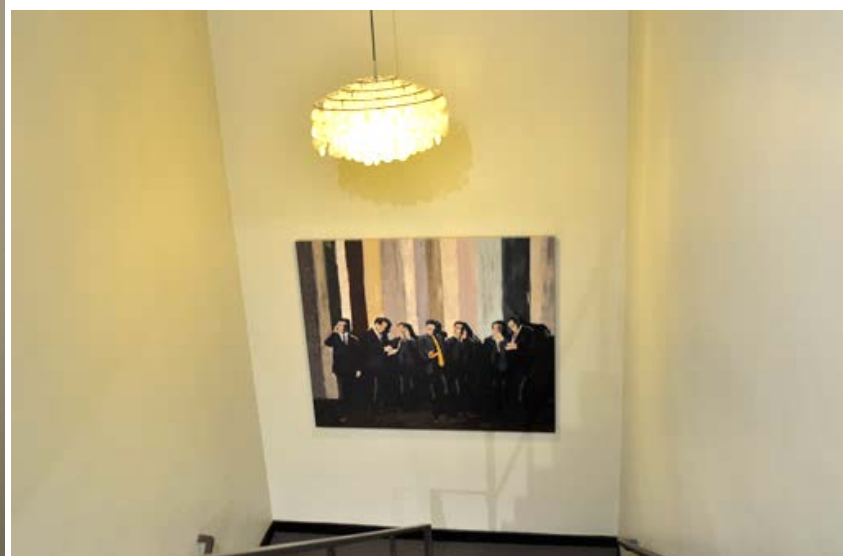
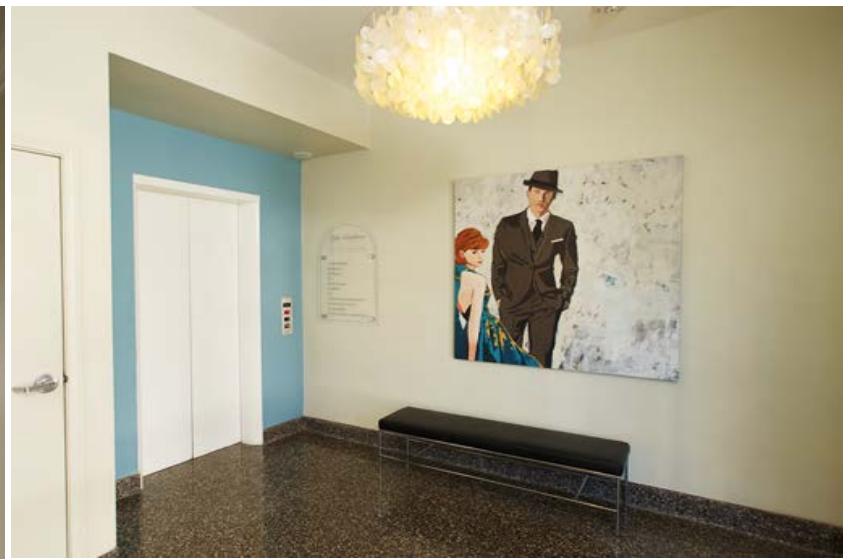
studiow2
 241 E Colorado Blvd | #203
 Pasadena, California 91101
 626.304.0505 | studiow2.net

COMMENT: _____
 DATE: _____

SUITE 330
 202 S. LAKE AVE. | 3rd FLOOR
 PASADENA, CA 91101

SP.1
 SPACE PLAN
 ISSUE DATE: 9/4/19 | JOB #: 17-2000 | DRAWN BY: DM

200 – 202 S. LAKE AVENUE



Suite 301



All information contained herein is from sources deemed reliable but has not been verified and is submitted without any warranty or representation, expressed or implied, as to its accuracy, and Redstone Commercial Real Estate, License #01525534, assumes no liability for errors of any kind, change of price, rental or other conditions, including, without limitation, prior sale, lease or financing or withdrawal without notice. This presentation is for information only and under no circumstances whatsoever is to be deemed a contract, note, memorandum or any other form of binding commitment.

Suite 330



RECEPTION AREA



OPEN AREA



PRIVATE OFFICE



CONFERENCE ROOM

All information contained herein is from sources deemed reliable but has not been verified and is submitted without any warranty or representation, expressed or implied, as to its accuracy, and Redstone Commercial Real Estate, License #01525534, assumes no liability for errors of any kind, change of price, rental or other conditions, including, without limitation, prior sale, lease or financing or withdrawal without notice. This presentation is for information only and under no circumstances whatsoever is to be deemed a contract, note, memorandum or any other form of binding commitment.