

# For Lease or Sale - Hollister Logistics Building/Contractor's Yard

1601 Lana Way

Hollister, CA



## ±13,948 Square Foot Building on a 3.49 Acre Parcel

As exclusive agent(s), we are pleased to offer the following space:

- ◆ 2-Story Office: ±5,116 Square Feet
- ◆ Warehouse/Shop: ±8,832 Square Feet with Recessed Vehicle Work Pit
- ◆ 6 Automatic Roll-Up Grade Doors - Drive Through
- ◆ 18'-20' Clear Height, Insulated Ceiling with Sky Lights
- ◆ Fire Sprinkler System
- ◆ 4 Double Walled UST with Monitoring System; New Oil, Used Oil, Hydra Oil, Diesel
- ◆ Zoned M-1 Light Industrial
- ◆ APN: 051-162-005-000
- ◆ Power: 800 Amps, 110/208 Volts, 3-Phase Power
- ◆ Heavy Industrial Yard Pavement
- ◆ 10'-12' Slatted Security Fence with 2 Sliding Gates
- ◆ Large 5-HP Compressor; Wash Station with Drain
- ◆ ±2,255 Square Foot (55'x41') Steel Building Workshop in Rear - 1/2 Paint Booth, 1/2 Welding/Repair Shop
- ◆ Large Storage Sheds Along Perimeter
- ◆ 2 ADA Restrooms, Shower & Workers Restroom
- ◆ Interior and Exterior Camera + Security Alarm System
- ◆ Cannabis Permitted
- ◆ Contact Brokers for Pricing



**John Weatherby** 650.358.5269 [jweatherby@ngkf.com](mailto:jweatherby@ngkf.com) CA RE License #00640295

**Juan de Leon** 650.572.6573 [Juan.deLeon@ngkf.com](mailto:Juan.deLeon@ngkf.com) CA RE License #01383120

2950 South Delaware Street, Suite 125, San Mateo, CA 94403

[www.ngkf.com](http://www.ngkf.com)

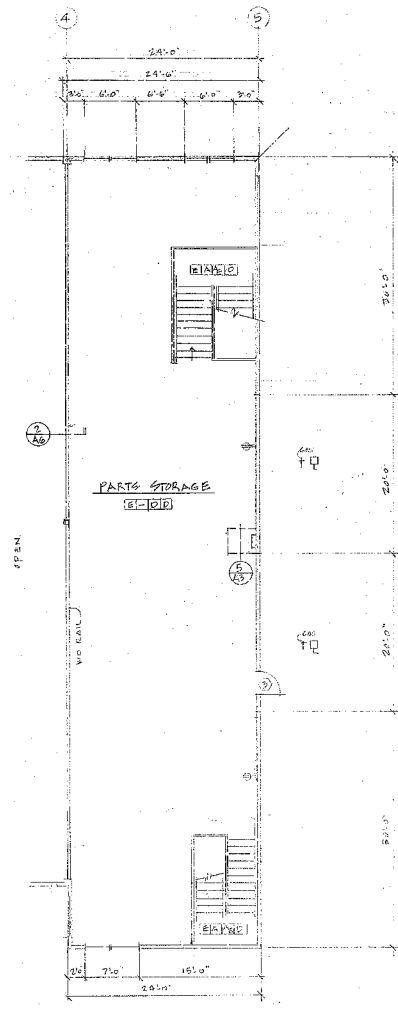


# For Lease or Sale - Hollister Logistics Building/Contractor's Yard

1601 Lana Way

Hollister, CA

## Mezzanine Floor Plan



**John Weatherby** 650.358.5269 [jweatherby@ngkf.com](mailto:jweatherby@ngkf.com) CA RE License #00640295

**Juan de Leon** 650.572.6573 [Juan.deLeon@ngkf.com](mailto:Juan.deLeon@ngkf.com) CA RE License #01383120



2950 South Delaware Street, Suite 125, San Mateo, CA 94403

[www.ngkf.com](http://www.ngkf.com)

# For Lease or Sale - Hollister Logistics Building/Contractor's Yard

1601 Lana Way

Hollister, CA



**John Weatherby** 650.358.5269 [jweatherby@ngkf.com](mailto:jweatherby@ngkf.com) CA RE License #00640295

**Juan de Leon** 650.572.6573 [Juan.deLeon@ngkf.com](mailto:Juan.deLeon@ngkf.com) CA RE License #01383120

2950 South Delaware Street, Suite 125, San Mateo, CA 94403

[www.ngkf.com](http://www.ngkf.com)



The distributor of this communication is performing acts for which a real estate license is required. The information contained herein has been obtained from sources deemed reliable but has not been verified and no guarantee, warranty or representation, either express or implied, is made with respect to such information. Terms of sale or lease and availability are subject to change or withdrawal without notice.

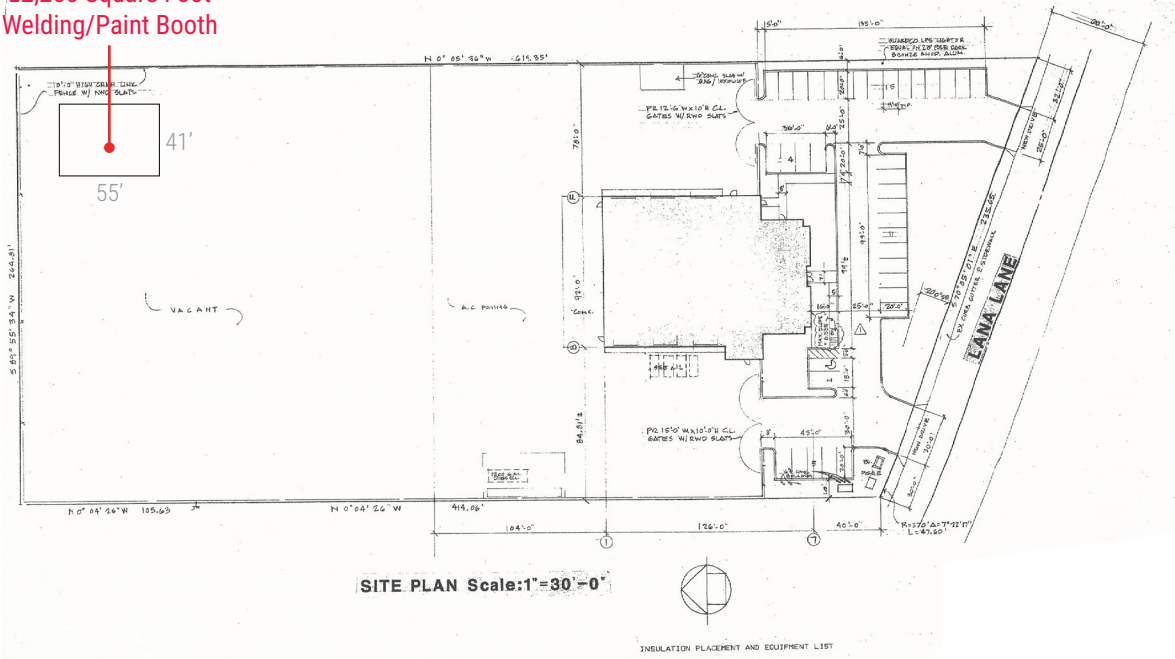
20-0253 • 09/20

# For Lease or Sale - Hollister Logistics Building/Contractor's Yard

1601 Lana Way

Hollister, CA

±2,255 Square Foot  
Welding/Paint Booth



**John Weatherby** 650.358.5269 [jweatherby@ngkf.com](mailto:jweatherby@ngkf.com) CA RE License #00640295

**Juan de Leon** 650.572.6573 [Juan.deLeon@ngkf.com](mailto:Juan.deLeon@ngkf.com) CA RE License #01383120



2950 South Delaware Street, Suite 125, San Mateo, CA 94403

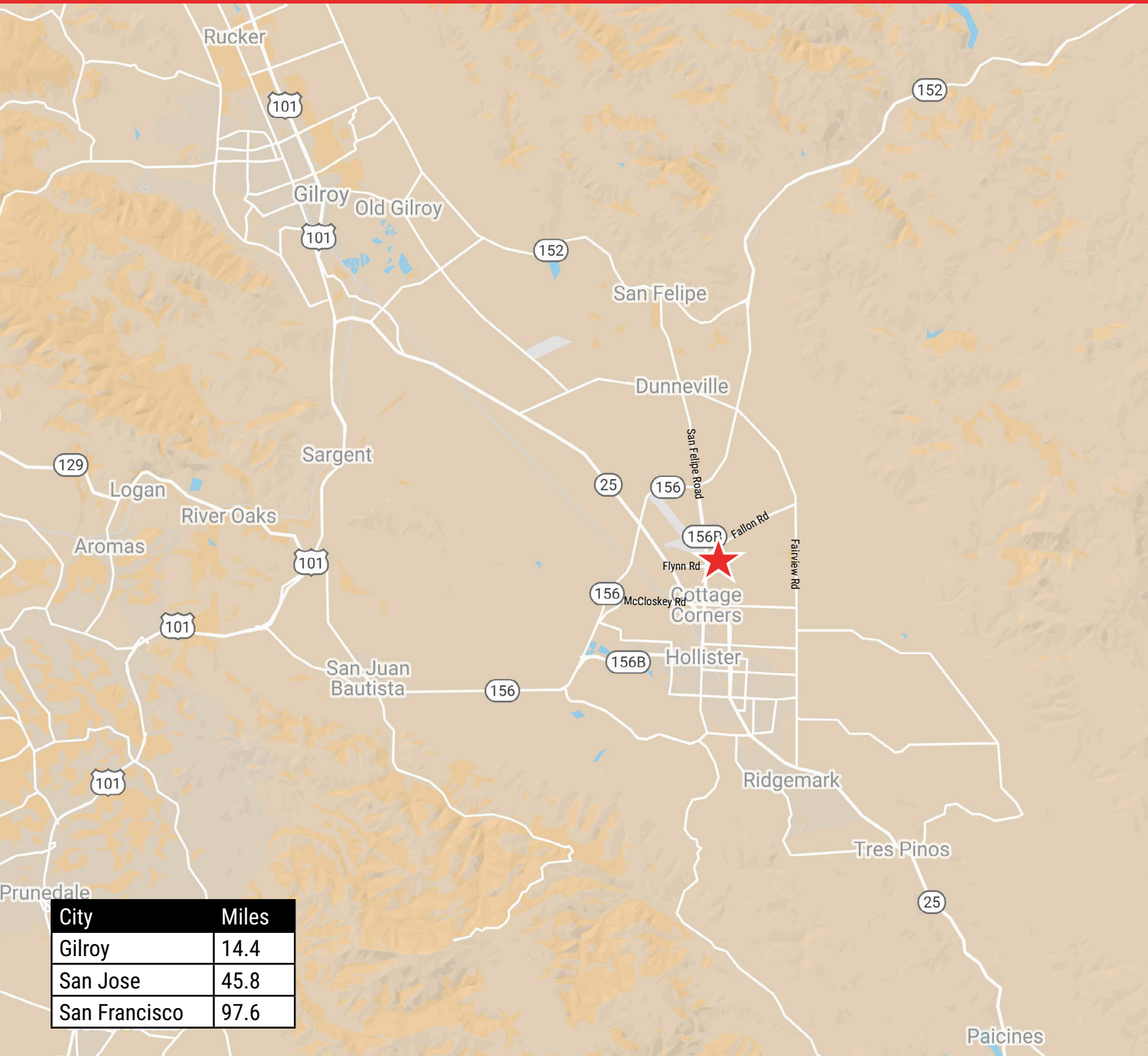
[www.ngkf.com](http://www.ngkf.com)

The distributor of this communication is performing acts for which a real estate license is required. The information contained herein has been obtained from sources deemed reliable but has not been verified and no guarantee, warranty or representation, either express or implied, is made with respect to such information. Terms of sale or lease and availability are subject to change or withdrawal without notice.

# For Lease or Sale - Hollister Logistics Building/Contractor's Yard

1601 Lana Way

Hollister, CA



**John Weatherby** 650.358.5269 [jweatherby@ngkf.com](mailto:jweatherby@ngkf.com) CA RE License #00640295

**Juan de Leon** 650.572.6573 [Juan.deLeon@ngkf.com](mailto:Juan.deLeon@ngkf.com) CA RE License #01383120



2950 South Delaware Street, Suite 125, San Mateo, CA 94403

[www.ngkf.com](http://www.ngkf.com)

The distributor of this communication is performing acts for which a real estate license is required. The information contained herein has been obtained from sources deemed reliable but has not been verified and no guarantee, warranty or representation, either express or implied, is made with respect to such information. Terms of sale or lease and availability are subject to change or withdrawal without notice.