

FOR SALE

# 633 West Elizabeth Avenue

LINDEN, NJ

RETAIL



## PROPERTY INFO

- + **Address:** 633 West Elizabeth Avenue  
Linden, NJ
- + **Block & Lot:** 321/5
- + **Lot Area:** 14,898
- + **Acres:** 0.34
- + **Taxes:** \$17,357.09
- + **Year Built:** 1956
- + **Sale Price:** \$900,000
- + **Zoning:** Commercial
- + **Stories:** 1
- + **Parking:** 25 surface tandem spaces
- + 4-way lighted intersection
- + 2,500 +/- automotive shop
- + Prime signalized-intersection of  
West Elizabeth Avenue & Stiles



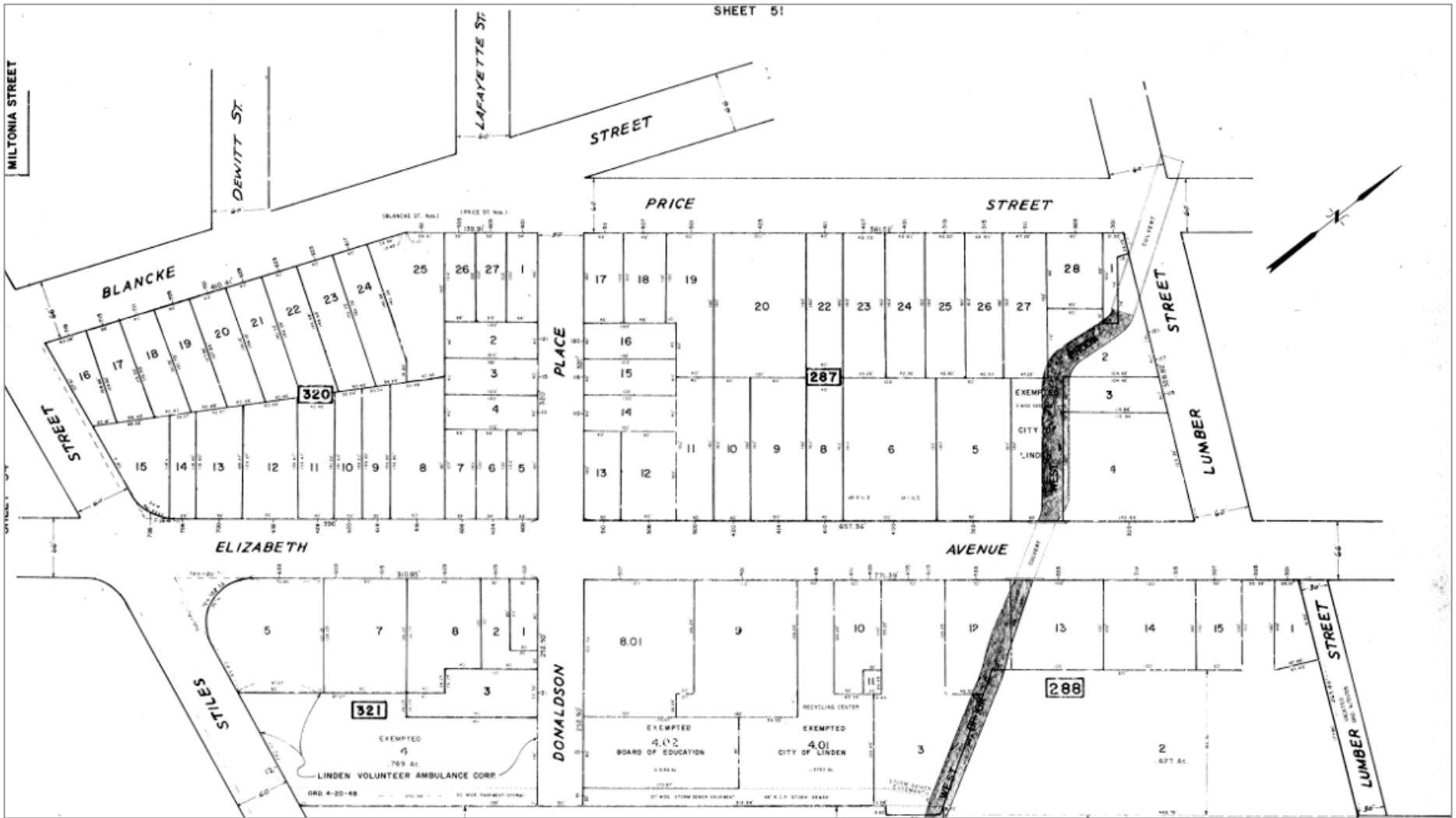
FOR SALE

# 633 West Elizabeth Avenue

LINDEN, NJ

RETAIL

## RETAIL TAX MAP



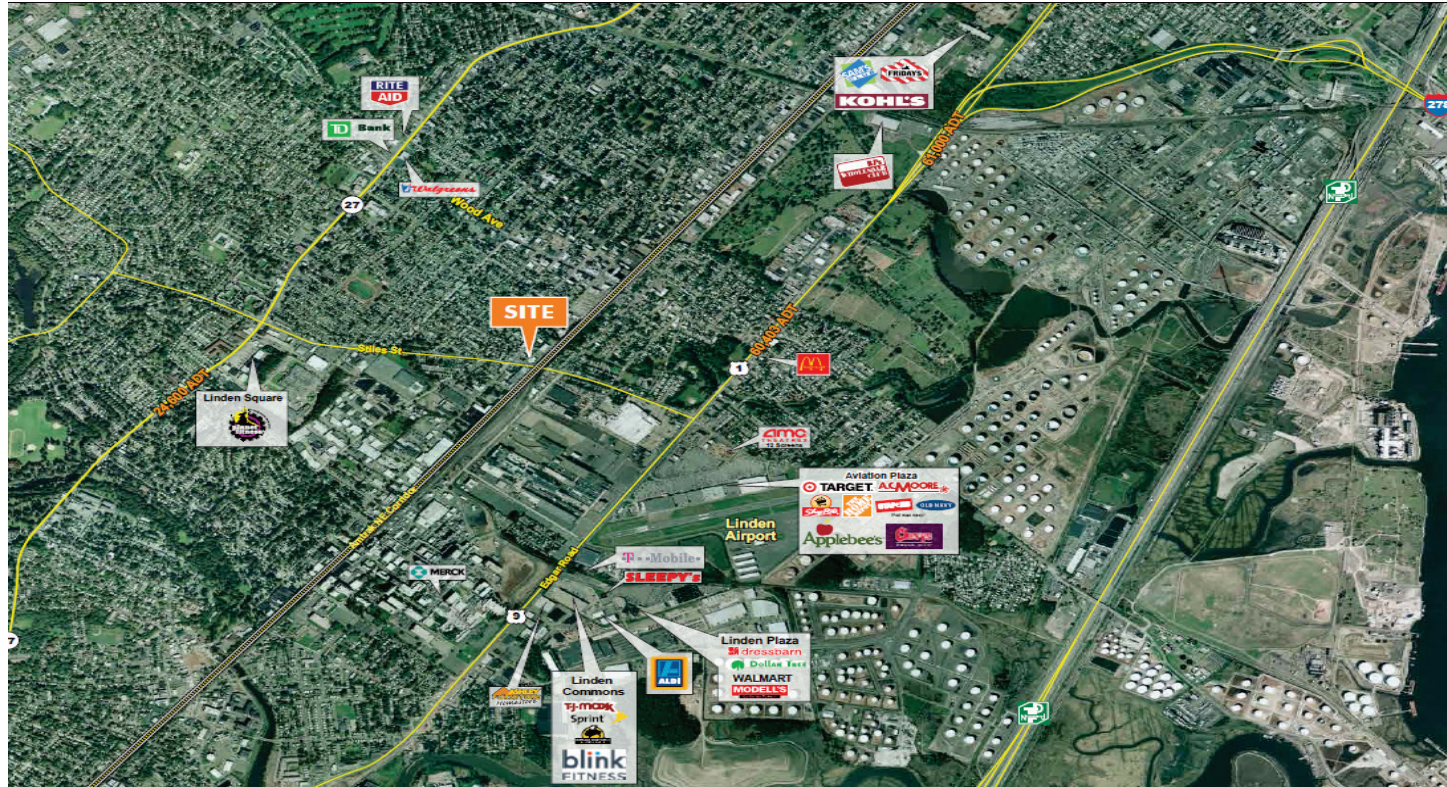
FOR SALE

# 633 West Elizabeth Avenue

LINDEN, NJ

RETAIL

## RETAIL AERIAL



## CONTACT US

### PATTI FIORE-AMCANGELO

Vice President  
+1 732 509 2835  
patti.amcangelo@cbre.com

© 2018 CBRE, Inc. All rights reserved. This information has been obtained from sources believed reliable, but has not been verified for accuracy or completeness. You should conduct a careful, independent investigation of the property and verify all information. Any reliance on this information is solely at your own risk. CBRE and the CBRE logo are service marks of CBRE, Inc. All other marks displayed on this document are the property of their respective owners. Photos herein are the property of their respective owners. Use of these images without the express written consent of the owner is prohibited.

[www.cbre.us](http://www.cbre.us)

**CBRE**