

Publix #1058 - Indian Harbour Place

270 E. Eau Gallie Boulevard
Indian Harbour Beach, FL 32937
Lat 28.139, Long -80.597

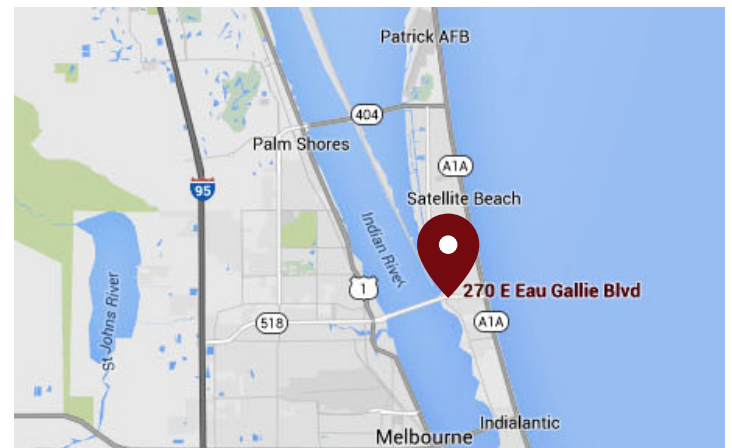
FOR LEASE



1,786 - 2,908 SF AVAILABLE

PROPERTY HIGHLIGHTS

- Publix-Anchored Center
- Gateway to Indian Harbour Beach and Beachside Communities
- Anchored by Beall's Department Store and Publix Supermarket
- Great Neighborhood Mix of Merchants
- Combined Traffic Count: 45,000 VPD



DEMOGRAPHICS	1 Mile	3 Miles	5 Miles
Total Population	7,514	38,388	94,847
Daytime Population	7,749	38,552	101,559
Total Households	3,146	17,157	42,919
Avg. HH Income	\$87,850	\$92,656	\$82,508

Data provided by Placer Labs Inc. (www.placer.ai) & Esri

Tracy Worrell

407.581.6219 | tworrell@crossmanco.com
3333 South Orange Avenue, Suite 201, Orlando, FL

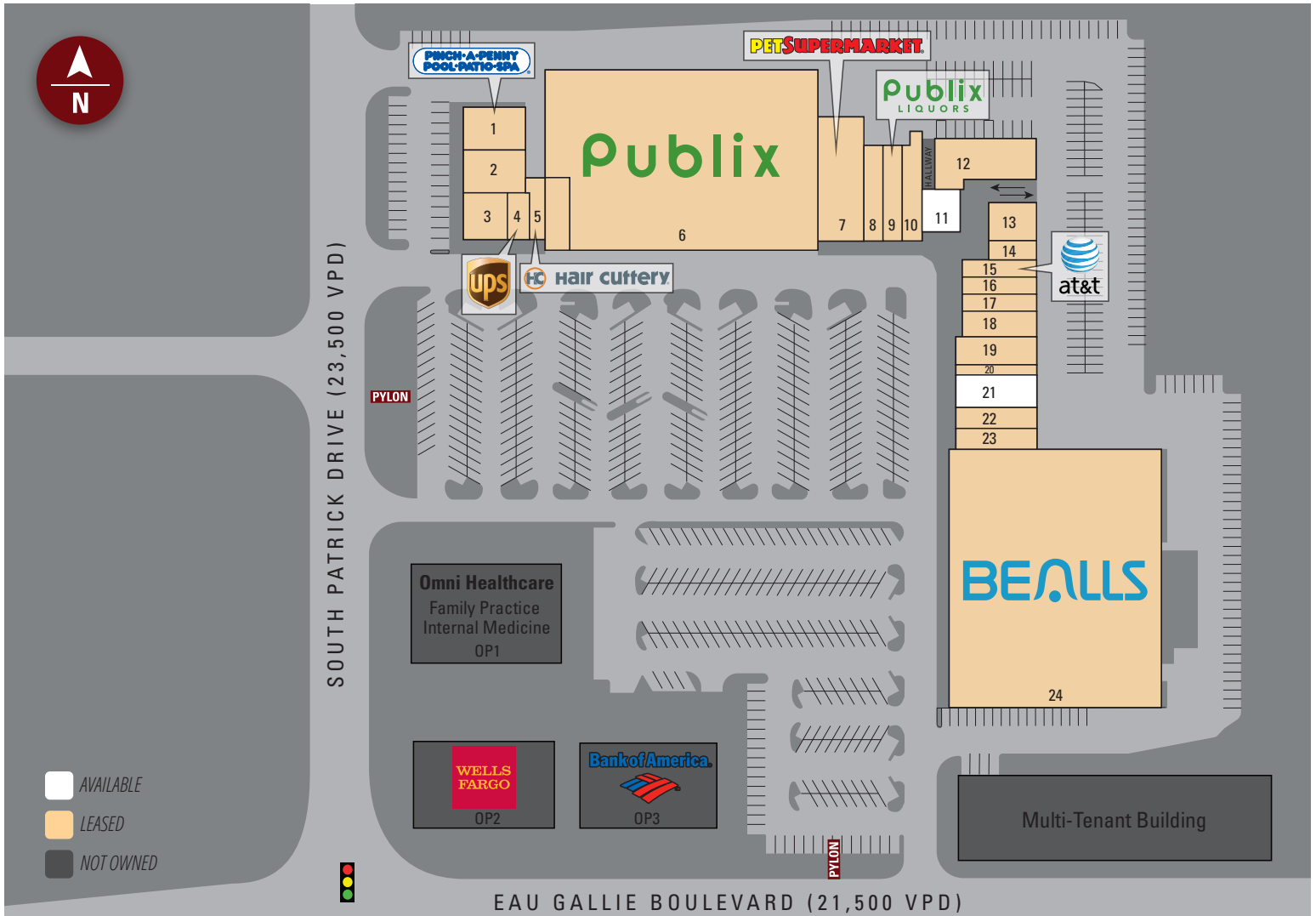
Licensed Real Estate Broker. No warranty expressed or implied has been made to the accuracy of the information provided herein, no liability assumed for error or omission.



www.crossmanco.com

Publix #1058 - Indian Harbour Place

270 E. Eau Gallie Boulevard
 Indian Harbour Beach, FL 32937
 Lat 28.139, Long -80.597



Suite	Tenant	Size
6	Publix	54,340
1	Pinch-A-Penny	2,925
2	Jade Palace Chinese Restaurant	2,925
3	Pizza Vola Italian Restaurant	2,250
4	The Ups Store	1,199
5	Hair Cuttery	1,132
7	Pet Supermarket	6,298
8	Sumo Sushi & Grill	2,000
9	Publix Liquors	2,000

Suite	Tenant	Size
10	Frankie's Wings And Things	2,000
11	AVAILABLE	1,786
12	Brevard County Tax Collector	5,585
13	Circle Club Drug Rehab	2,000
14	Affordable Foot Specialist	1,000
15	AT&T	1,400
16	Lee Nail Spa	1,400
17	Cabinets & More	1,400
18	Hear Rite	2,100

Suite	Tenant	Size
19	Casual 2 Coastal Décor	2,372
20	Ifixandrepair	904
21	AVAILABLE	2,908
22	Banana River Dental	1,906
23	Hairlines Salon	1,870
24	Beall's Department Store	59,697
TOTAL		163,397

Tracy Worrell

407.581.6219 | tworrell@crossmanco.com

3333 South Orange Avenue, Suite 201, Orlando, FL

Licensed Real Estate Broker. No warranty expressed or implied has been made to the accuracy of the information provided herein, no liability assumed for error or omission.



www.crossmanco.com

Publix #1058 - Indian Harbour Place

270 E. Eau Gallie Boulevard
Indian Harbour Beach, FL 32937
Lat 28.139, Long -80.597

FOOT TRAFFIC OVERVIEW

EST. # OF CUSTOMERS ANNUALLY



EST. # OF VISITS ANNUALLY



AVG. VISITS / CUSTOMER



AVG. LENGTH-OF-STAY / VISIT



TOP 3 DAYS



Sunday	246,214
Saturday	238,008
Friday	226,820

OF VISITS

TOP 3 HOURS

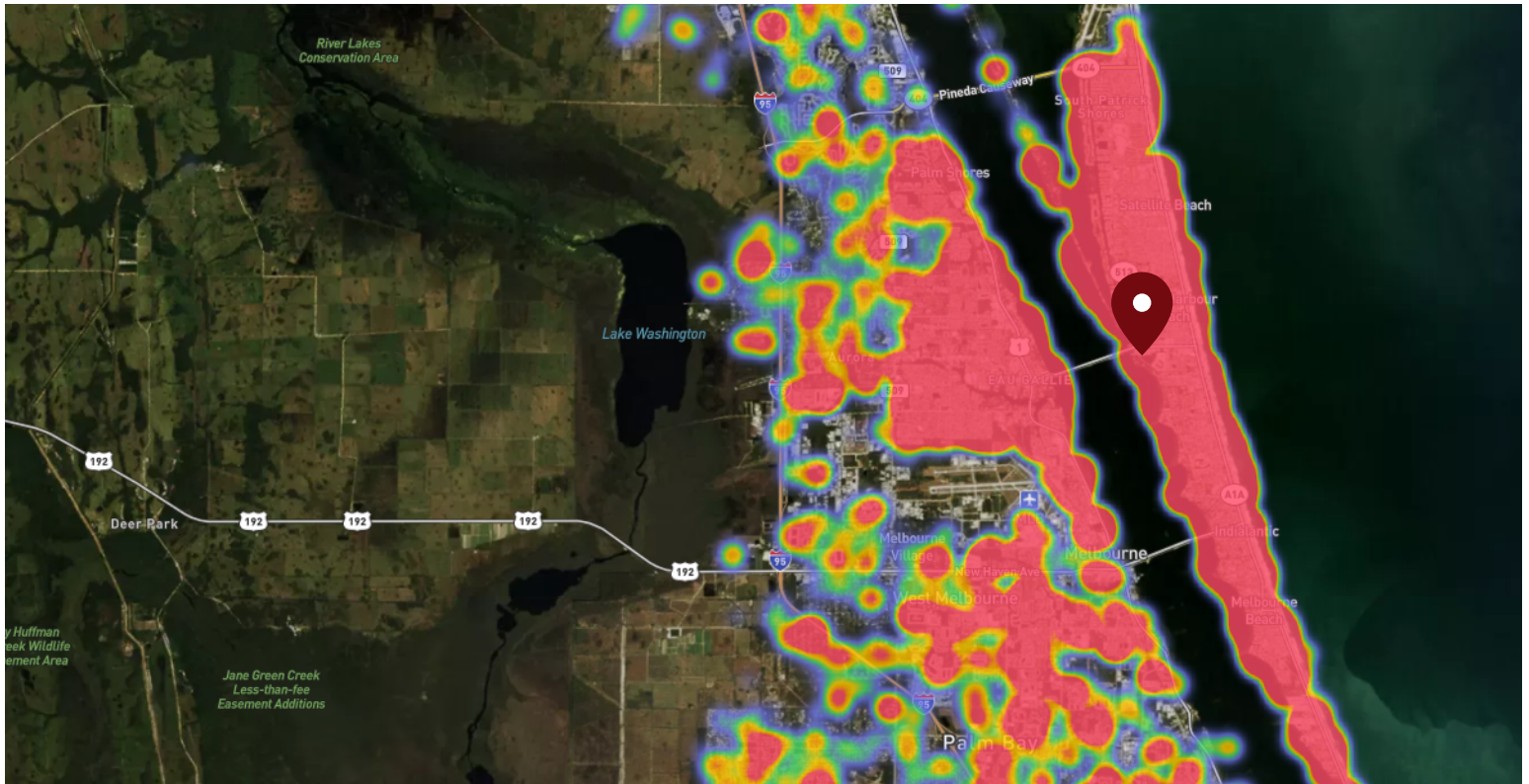


12-1 PM	273,540
4-5 PM	273,124
5-6 PM	271,556

OF VISITS

Data provided by Placer Labs Inc. (www.placer.ai) Dec 1, 2019 - Nov 30, 2020

SITE VISIT DENSITY



Red, orange, and yellow colors represent the location of 60% of site visitors

Data provided by Placer Labs Inc. (www.placer.ai)

Tracy Worrell

407.581.6219 | tworrell@crossmanco.com

3333 South Orange Avenue, Suite 201, Orlando, FL

Licensed Real Estate Broker. No warranty expressed or implied has been made to the accuracy of the information provided herein, no liability assumed for error or omission.



Crossman & Company

www.crossmanco.com