

BOWTRUSS



In Germantown. Close To Everything But Ordinary.

5,729 SF Available July 2019

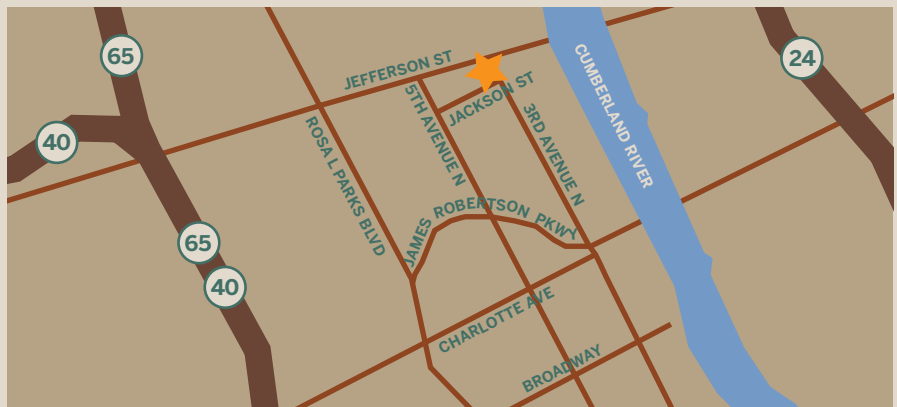
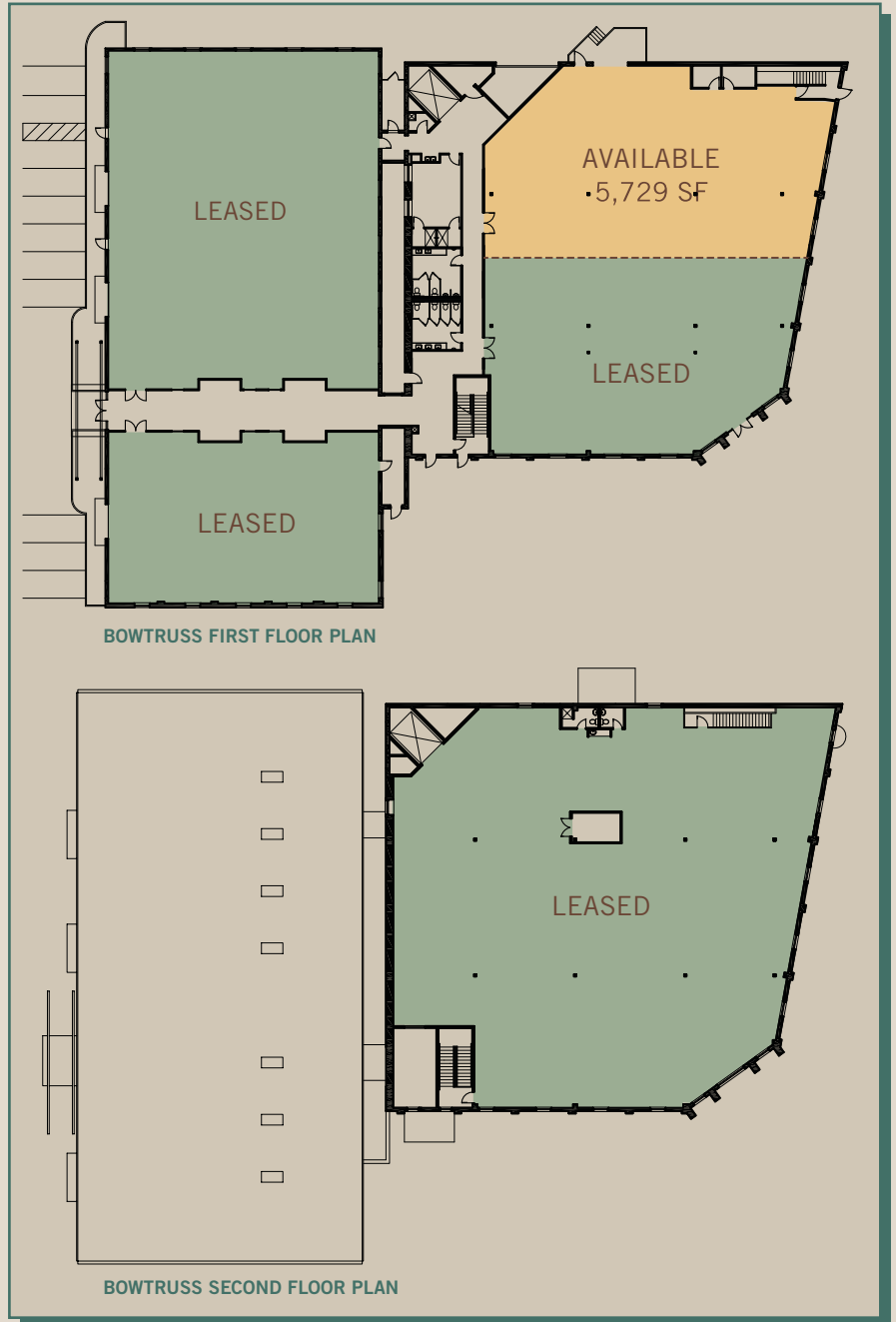


If Your Work Matters, It Matters Where You Work.

Every office building has a personality. Perceptive companies live in buildings that complement their corporate culture.

The BowTruss Building is for companies who get a charge out of what they do.

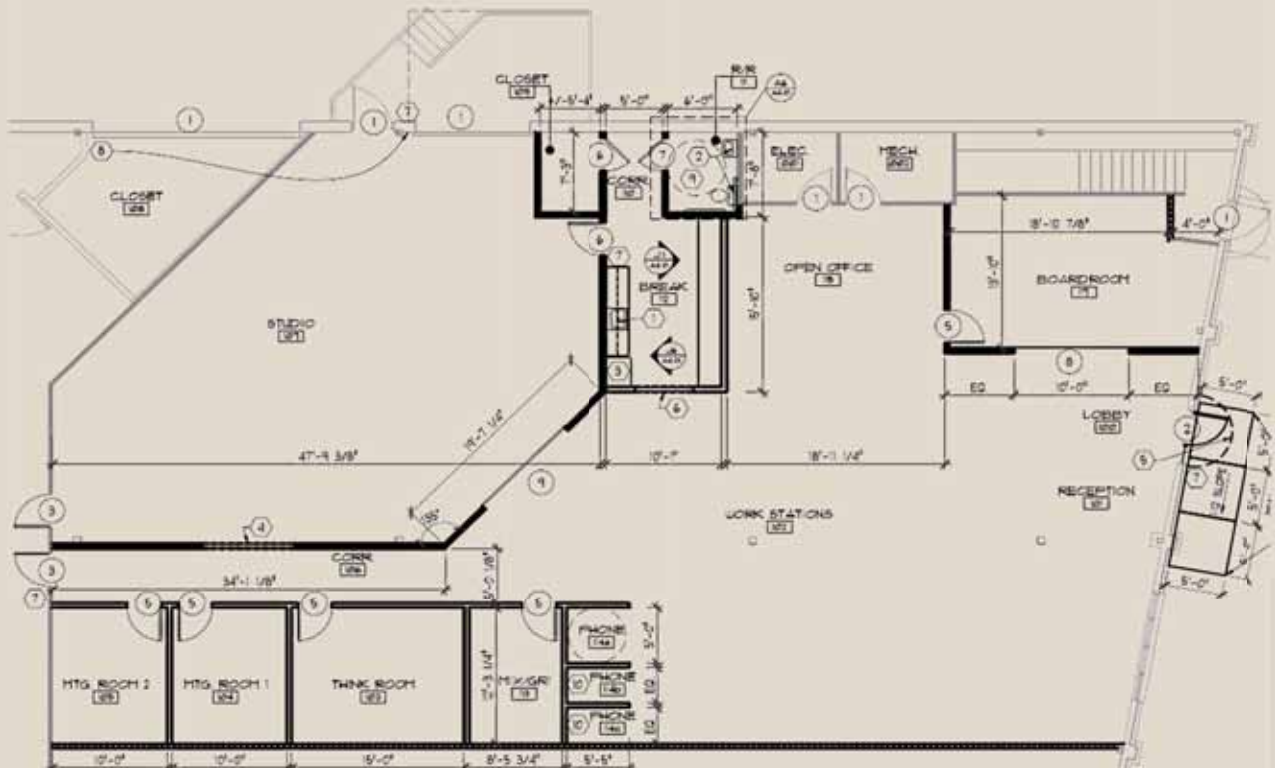
If you love what you do, we believe you'll love doing it here. Exposed metal bowtruss beams supporting a vaulted wooden ceiling. Sunlight flooding through large windows and skylights. Open architecture that encourages collaboration interspersed with private spaces. Many design choices transformed this industrial space into knowledge-based space, all directed toward creating an environment that allows smart, motivated, creative people to be their most productive.



Not Just A Great Building, A Great Neighborhood.



5,729 SF
Creative Office Space





Just The Facts.

ADDRESS

1001 Third Avenue North, Nashville, Tennessee

SQUARE FOOTAGE AVAILABLE

5,729

PARKING SPACES

23 (4/1,000)

EXERCISE FACILITY

Yes, with exercise machines and men's and women's showers

BUILDING ACCESS

Security 24/7 via card key
controlled access
secure parking
video monitoring

INTERSTATE ACCESS

Immediate access over Jefferson Street Bridge

DISTANCE TO DOWNTOWN

Less than one mile

LUXURY RESIDENTIAL UNITS WITHIN WALKING DISTANCE

More than 1,000

RESTAURANTS WITHIN WALKING DISTANCE

Germantown Café
Silo
City House
Monell's
Rolf and Daughters
Cupcake Collection
Farmer's Market food court
312
Jack Brown's Beer and Burger Joint
Butchertown Hall
5th & Taylor
Geist
Neighbors
Sedona Taphouse
Henrietta Red

CONTACT

Ronnie Wenzler, SIOR
Cushman & Wakefield
615-301-2803: office
615-414-8094: mobile
ronnie.wenzler@cushwake.com

Michael Havens, CCIM
Cushman & Wakefield
615-301-2813: office
615-939-3162 : mobile
michael.havens@cushwake.com

Madison Wenzler
Cushman & Wakefield
615-301-2821: office
615-390-7941 : mobile
madison.wenzler@cushwake.com