

Long Term Ground Lease Opportunity

1.57 Acre Site - 1 Mile from Downtown San Jose



610 Coleman Avenue
San Jose, California 95110

- High Visibility Location on Coleman Ave.
- Located Less Than 1 Mile From Downtown San Jose Area/SAP Center
- Across from San Jose Market Center With Target, Michaels, Trader Joe's, Cost Plus and Several Restaurants
- Unique Site with Three Side Streets, Ingress and Egress from Two
- Potential for Drive-Thru Retail
- Currently Zoned Heavy Industrial and General Planned for Light Industrial
- Multi-Story Building Possible—Potential for 4-5 Stories with FAA Review
- Potential For Airport Parking Structure

Exclusively Offered By:

David Taxin

Lic. # 00983163

dtaxin@moinc.net

(408) 477-2508

(408) 378-5900



MEACHAM/OPPENHEIMER CORFAC INTERNATIONAL
Commercial Brokerage | Investment Sales | Property Management



The information contained herein has been obtained from sources we deem reliable. We cannot, however, assume responsibility for its accuracy.

610 Coleman Avenue • San Jose, California 95110

Mineta San Jose
Airport (SJC)



Downtown SJ

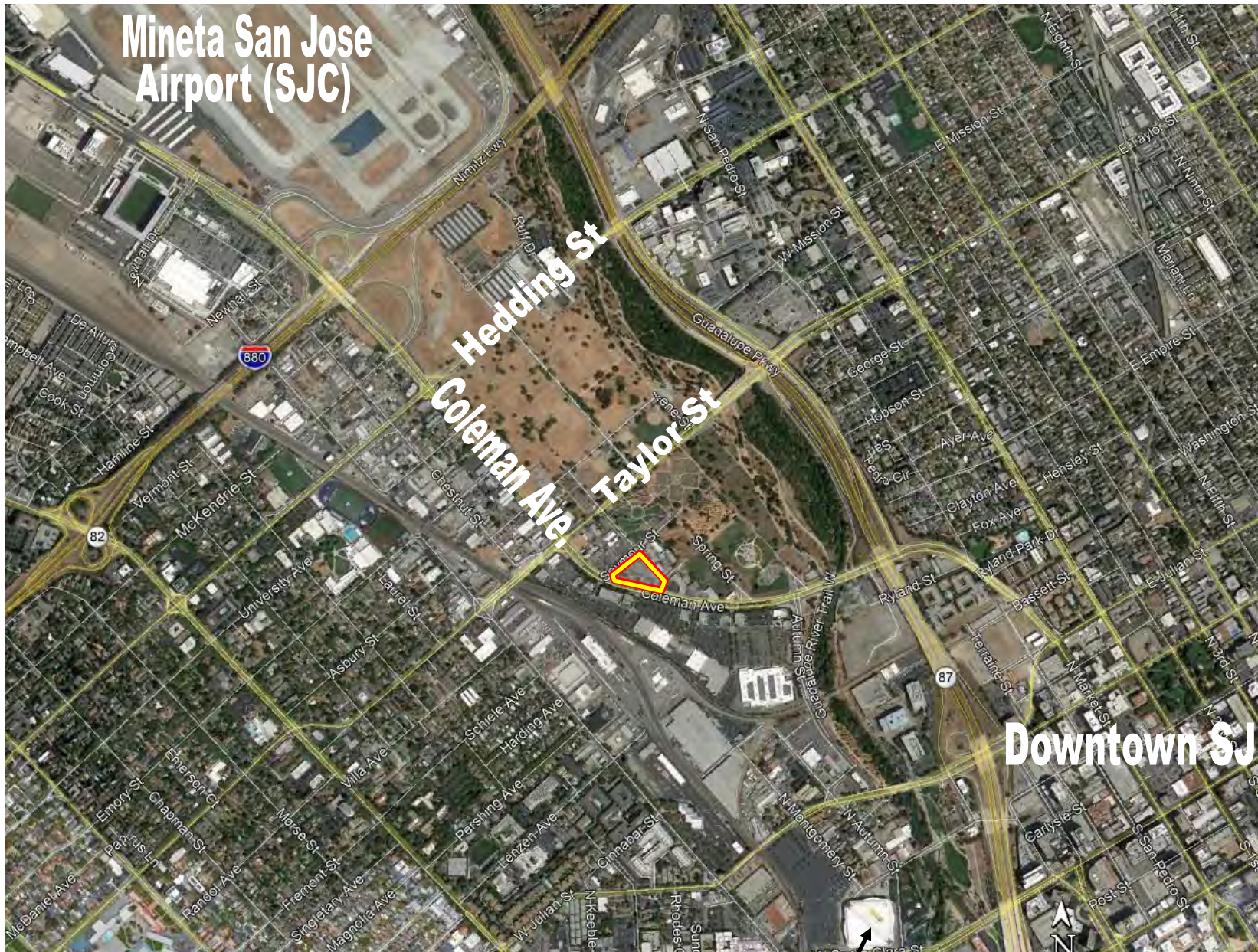
David Taxis

Lic. #00983163

dtaxis@moinc.net

(408) 477-2508

610 Coleman Avenue • San Jose, California 95110



SAP center
at san jose

David Taxin
Lic. #00983163

dtaxin@moinc.net
(408) 477-2508

610 Coleman Avenue • San Jose, California 95110



David Taxin

Lic. #00983163

dtaxin@moinc.net

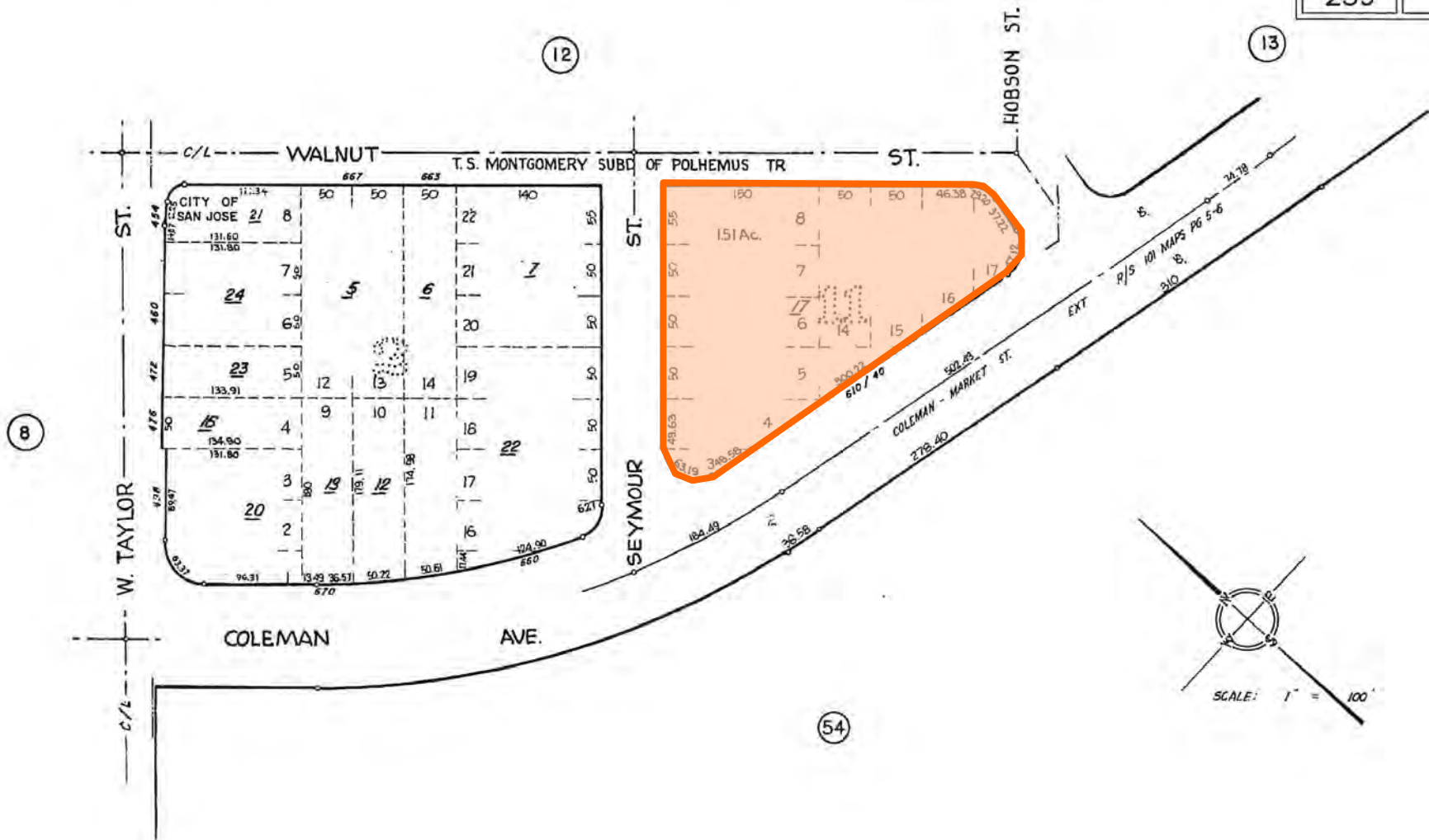
(408) 477-2508

610 Coleman Avenue • San Jose, California 95110

OFFICE OF COUNTY ASSESSOR — SANTA CLARA COUNTY, CALIFORNIA

BOOK
259

PAGE
11



David Taxin

Lic. #00983163

dtaxin@moinc.net

(408) 477-2508