

BACK ON THE MARKET FOR LEASE

20 N Railroad Avenue
Downtown San Mateo, CA



FEATURES

Building: ± 21,505 SF, upstairs office: ± 6,082,
downstairs warehouse/showroom: ±15,423 SF.

Downstairs divisible to:

Suite A: ± 5,423 SF

Suite B: ± 5,000 SF

Suite C: ± 5,000 SF

Spaces can be leased together or separately

2 story building with bow and truss ceilings

Full kitchen

Open floor plan

8 drive-in doors

±15 parking spaces

Newer double-pane windows

New improvements underway: interior improvements,
restrooms, interior/exterior paint, new parking lot

Within walking distance to Downtown San Mateo and
Caltrain Station and easily accessible from Highway 101

Asking: \$2.50 NNN

CONTACT

Joe Cammarata

650.769.3516

joec@kiddermathews.com

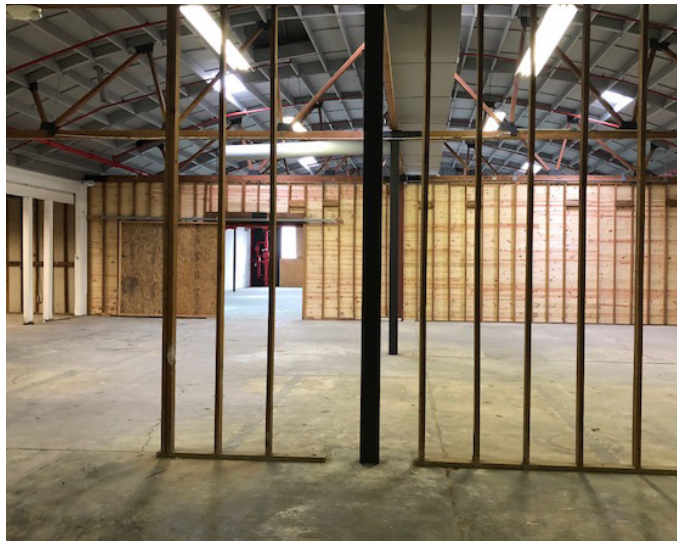
Lic #01366451



FOR LEASE

20 N Railroad Ave

PROPERTY PHOTOS



CONTACT

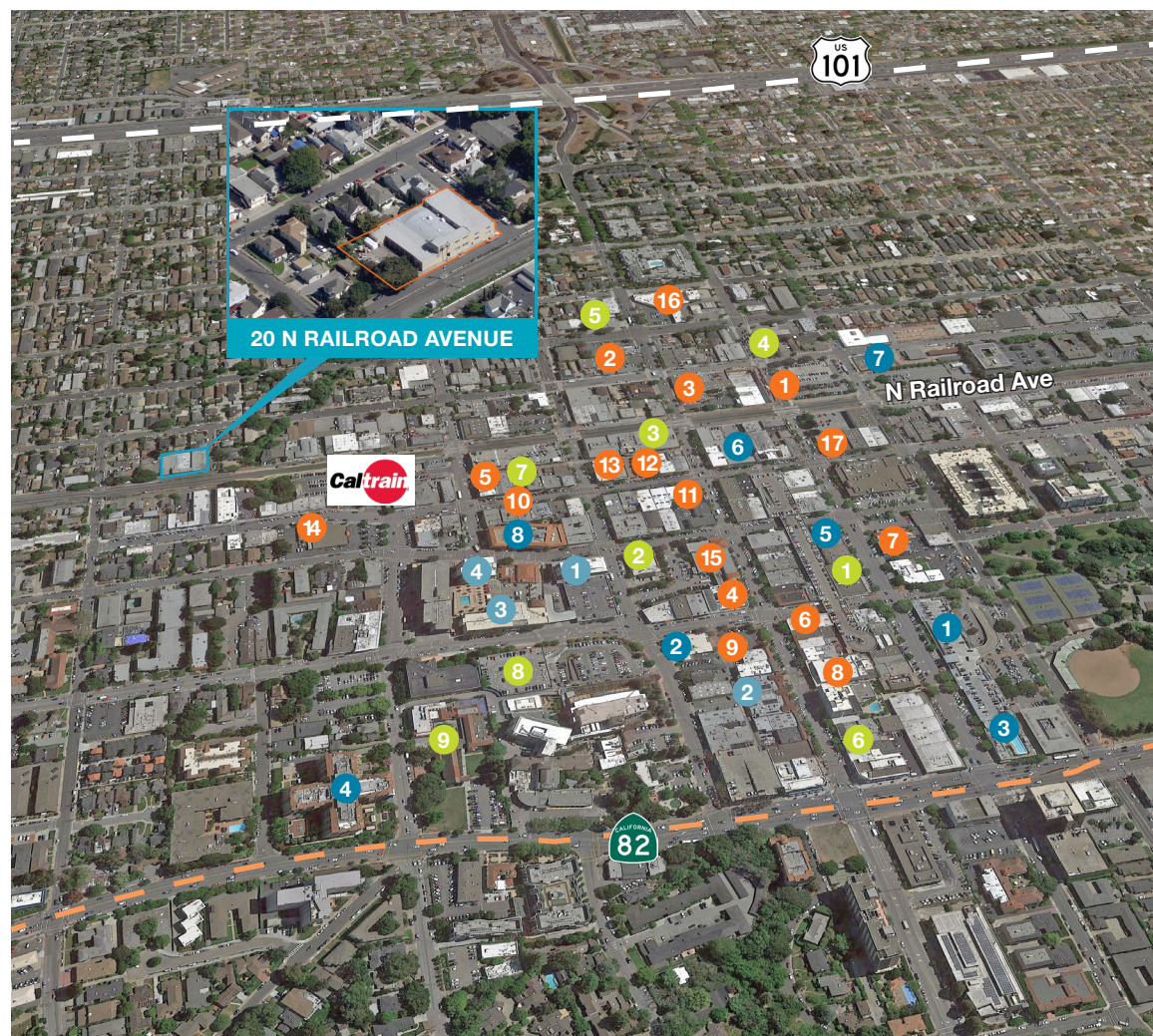
Joe Cammarata
650.769.3516
joe@kiddermathews.com
Lic #01366451



FOR LEASE

20 N Railroad Ave

AERIAL MAP



Food

- 1 Taco Bell
- 2 Jack in the Box
- 3 KFC
- 4 Baskin Robbins
- 5 Philz Coffee
- 6 L&L
- 7 Pizza My Heart
- 8 Porter House
- 9 Amici
- 10 Cream
- 11 Peet's Coffee
- 12 Pacific Catch
- 13 King Fish
- 14 Trag's Market
- 15 Walgreens
- 16 7 Eleven
- 17 Pokeatery

Health

- 1 Young Dental Group
- 2 Sutter Health
- 3 Lab Corp
- 4 Collective Health

Businesses

- 1 Chase
- 2 U.S. Bank
- 3 Equinox
- 4 The Peninsula Regent
- 5 Bank of the West
- 6 Education.com
- 7 Neighbor Helping Neighbor
- 8 Merrill Lynch

Others

- 1 FedEx
- 2 United State Postal Office
- 3 Cinemark
- 4 76 Gas Station
- 5 Shell Gas Station
- 6 Draper University
- 7 Orange Theory
- 8 Parking Garage
- 9 St. Matthew's st. Episcopal Day School



FOR LEASE

20 N Railroad Ave

GROUND FLOOR

CONTACT

Joe Cammarata
650.769.3516
joe@kiddermathews.com
Lic #01366451



Floorplan not to scale



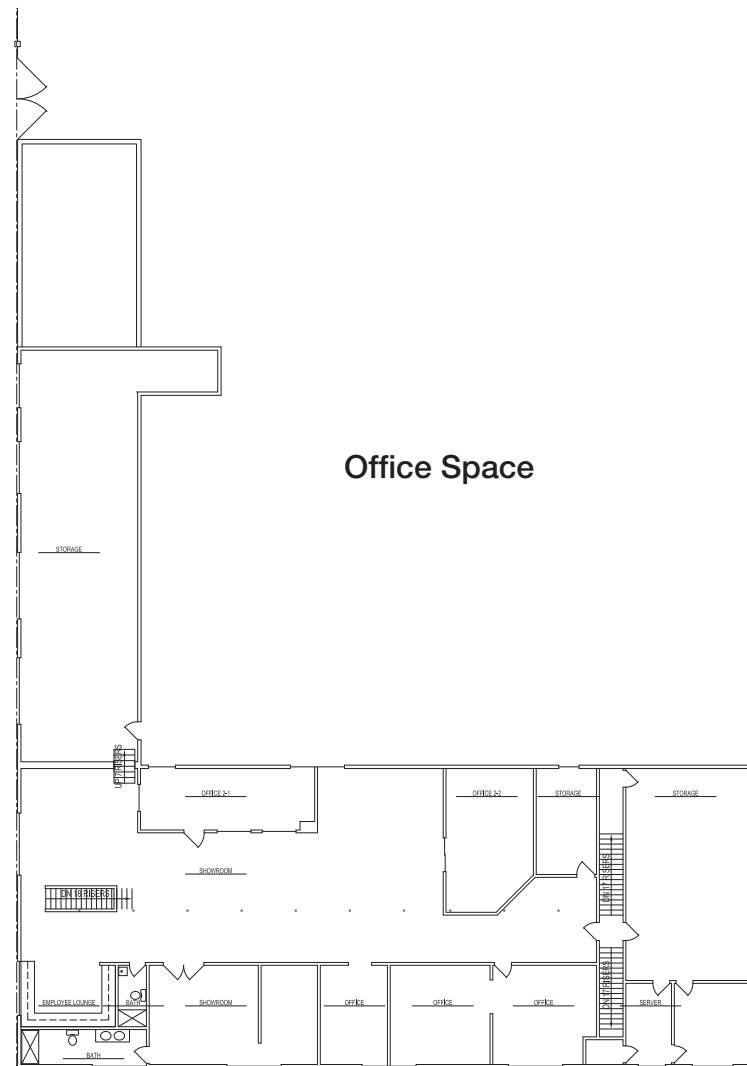
FOR LEASE

20 N Railroad Ave

SECOND FLOOR

CONTACT

Joe Cammarata
650.769.3516
joe@kiddermathews.com
Lic #01366451



Floorplan not to scale

