

155 W. WASHINGTON BLVD. CREATIVE OFFICE Sublease | DTLA



HIGHLIGHTS:

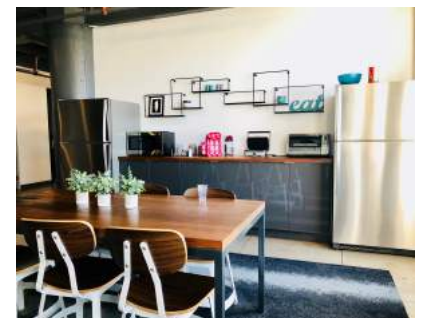
Size: 4,938 SF

Rent: \$1.75 MG / Mo.

Term: Through July 31, 2019

FURNITURE: Optional

- *CUSTOM interior design*
- *CREATIVE environment*
- *EXPOSED ceilings*
- *POLISHED concrete floors*
- *ABUNDANT natural light*
- *FUNCTIONAL layout*
- *MOVE-IN READY*
- *IDEAL for tech startups, production, art, photography.*



CONTACT:

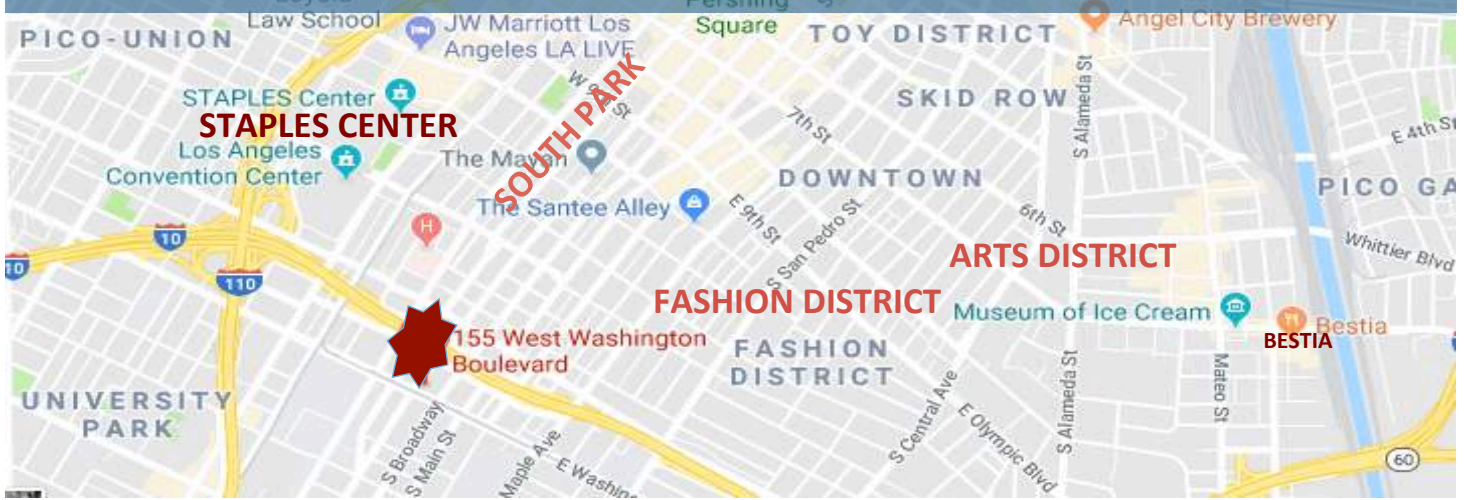
Contact: **Christian Saglie**

Email: **Christian@corprg.com**

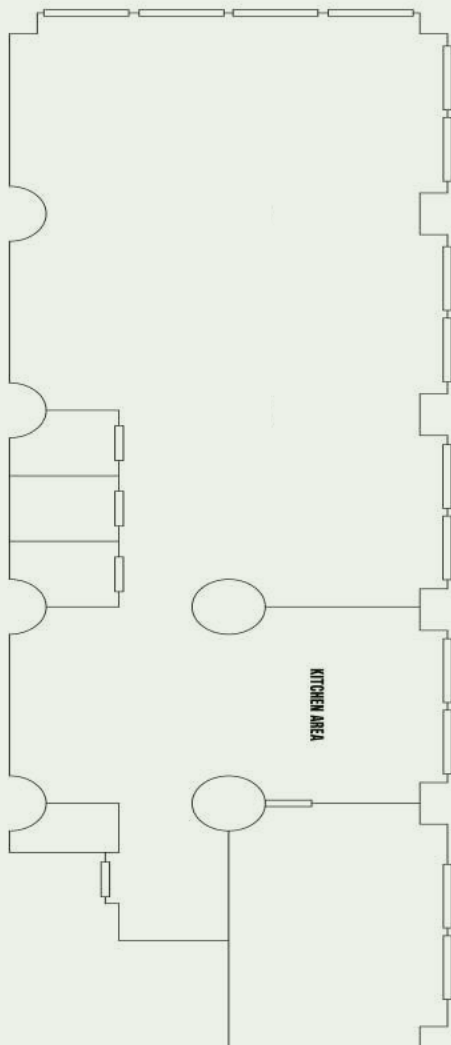
Phone: **(310) 394-4050 x4712**

CA License #01952665

155 W. WASHINGTON BLVD. CREATIVE OFFICE Sublease | DTLA



Suite 409



CONTACT:

Contact: **Christian Saglie**

Email: **Christian@corprg.com**

Phone: **(310) 394-4050 x4712**

CA License #01952665