

622 Third Avenue

MIDTOWN EAST
NEW YORK, NY



CONCEPTUAL RENDERING

NEWMARK

622 THIRD AVENUE

Property Details

Location

North block of East 40th Street between Lexington and Third Avenues

Approximate Size

Ground Floor 4,564 SF

Second Floor 3,907 SF

Ceiling Height

Ground Floor 14 FT

Second Floor 11 FT

Frontage

40 FT on East 40th Street

Term

Long term

Possession

Immediate

Site Status

Formerly Sterling National Bank

Neighbors

Shake Shack, Just Salad, Docks Oyster Bar & Seafood Grill, Le Pain Quotidien, MakiMaki, Zucker's Bagels & Smoked Fish, Hale & Hearty, Pressed, Momosan, Starbucks, Sinigual and Wagamama

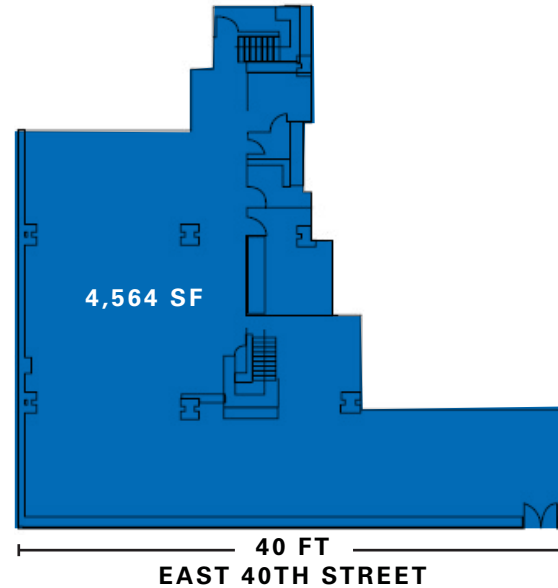
Comments

Tremendous ceiling height

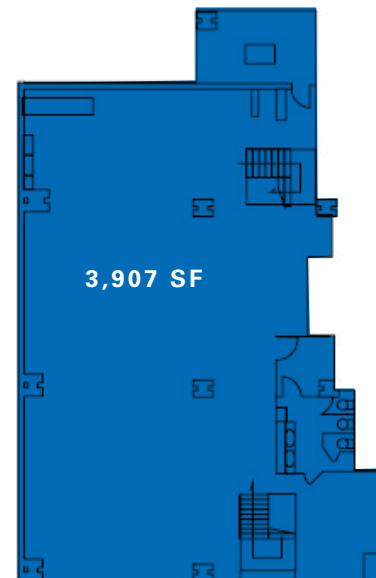
Located at the base of a 41-story, 900,000 SF office building

Situated steps from Grand Central Terminal and in the middle of the Midtown East office market

Ground Floor



Second Floor



622 THIRD AVENUE

EAST 45TH STREET

EAST 44TH STREET

EAST 43RD STREET

EAST 42ND STREET

EAST 41ST STREET

EAST 40TH STREET

EAST 39TH STREET

VANDERBILT AVENUE

DEWEY PLACE

MADISON AVENUE

PARK AVENUE

LEXINGTON AVENUE

THIRD AVENUE

SECOND AVENUE

622 THIRD AVENUE

⊕ COMING SOON

CONTACT

Adam Weinblatt
 t 212-372-2103
 adam.weinblatt@nrmk.com

Lucas Kooyman
 t 212-372-2384
 lucas.kooyman@nrmk.com

Jason Pruger
 t 212-372-2092
 jason.pruger@nrmk.com

nrmk.com

